

# VIEW POINTE BUSINESS PARK

SUITE 220 | 1880 W. JUDITH LANE | BOISE, ID 83705

SALE PRICE  
**\$575,000**

**PAT SHALZ SIOR**

208.947.0834

pat@tokcommercial.com

**LANCE HENDRICKS**

208.957.5623

lance@tokcommercial.com

HIGHLIGHTS



**Class A Office Condo:** Premium 1,841 SF space in Southeast Boise's View Pointe Business Park

**Move-In Ready:** Fully furnished, ideal for general office or medical use

**Flexible Layout:** Includes reception area, 2 private offices, conference room, open cube area, and storage/IT room

**Prime Location:** Professional neighbors and access to top service providers.

**Ample Parking:** Convenient on-site parking for employees and clients.

DETAILS



**SALE PRICE:** \$575,000

**RATE:** \$312.00/SF

**SUBMARKET:** Southwest Boise

**BLDG TYPE:** Class A Office

**CONDO SIZE:** 1,841 SF

**PARKING:** Ample

**ZONING:** MX-3

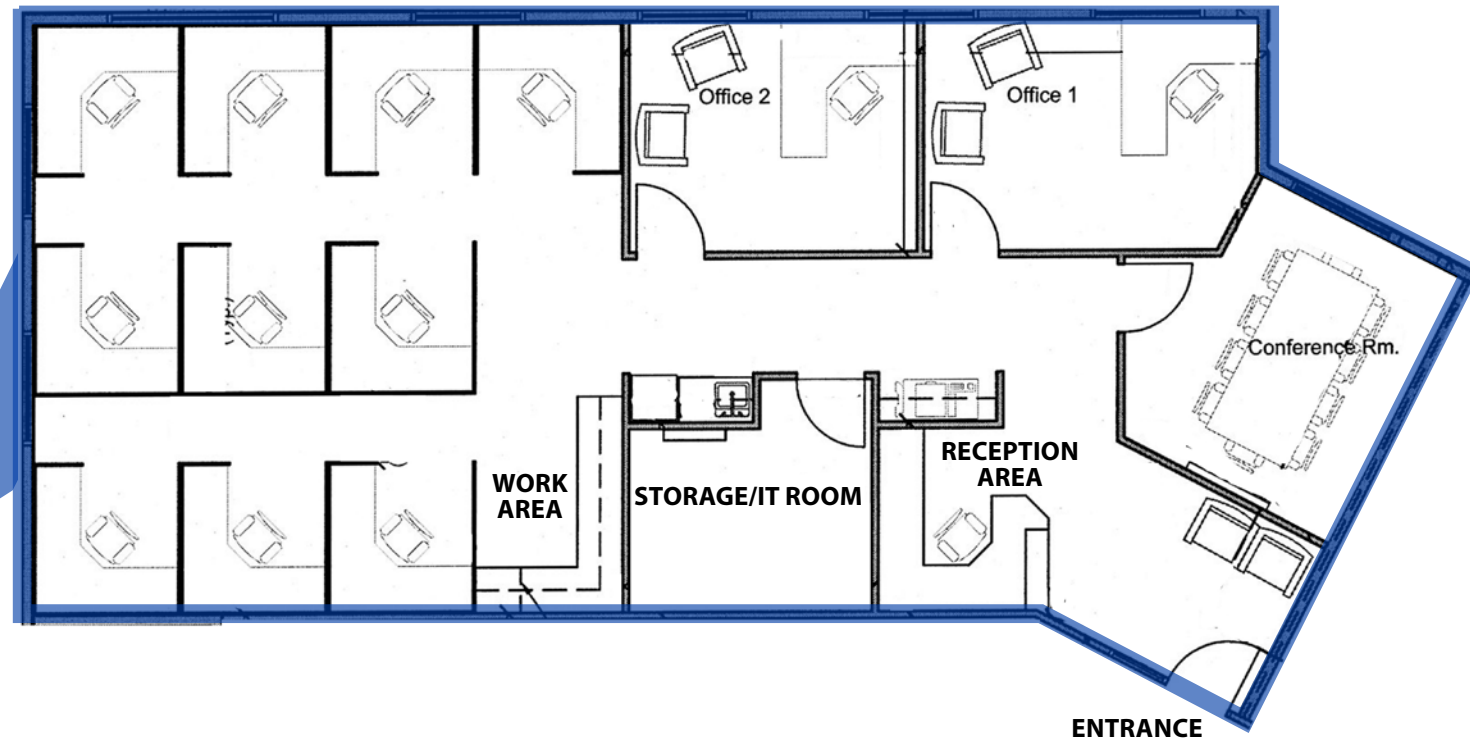


UPDATED: 2.3.2025

THIS PROPERTY IS EXCLUSIVELY MARKETING BY TOK BOISE LLC DBA TOK COMMERCIAL This information was obtained from sources believed reliable but cannot be guaranteed. Any opinions or estimates are used for example only.

# FLOOR PLAN

## SUITE 220: 1,841 SF

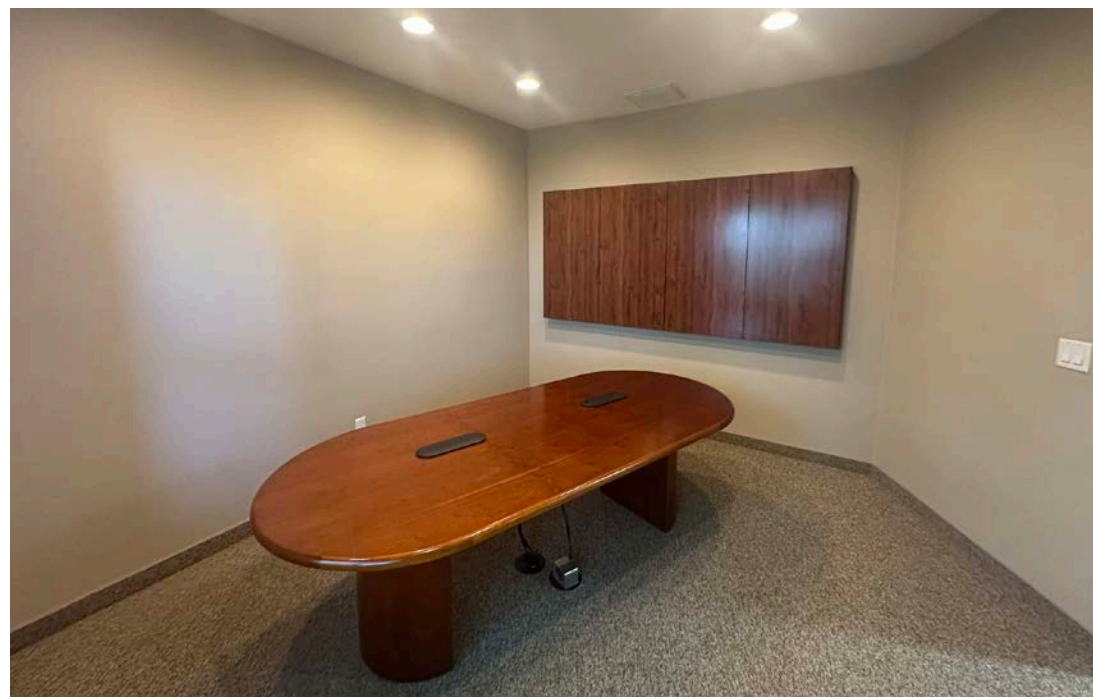


1880 W Judith Ln

Federal Way

View Pointe Business Park

Overland Road



TERRY DAY PARK

SITE

FEDERAL WAY

W OVERLAND RD

