

COCCA DEVELOPMENT

RETAIL SPACE FOR LEASE

1424 WEST MAIN STREET (ROUTE 58)

GROVE CITY, PA 16127



- Join Tractor Supply with Dollar General, Sherwin Williams Paints, Grove City Coin Laundry, and Burger King in adjacent lots
- Large lot with ample parking in front
- Separate entrance for deliveries
- Located just over 3.5 miles northeast of Grove City Prime Outlets

AVAILABLE SUITE AREA—\$11/square foot NNN:

Approximately 6,500 square feet*

Approximately 3,000 square feet*

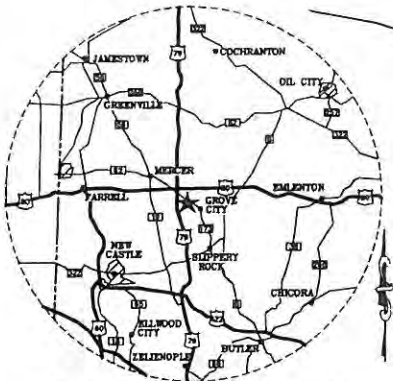
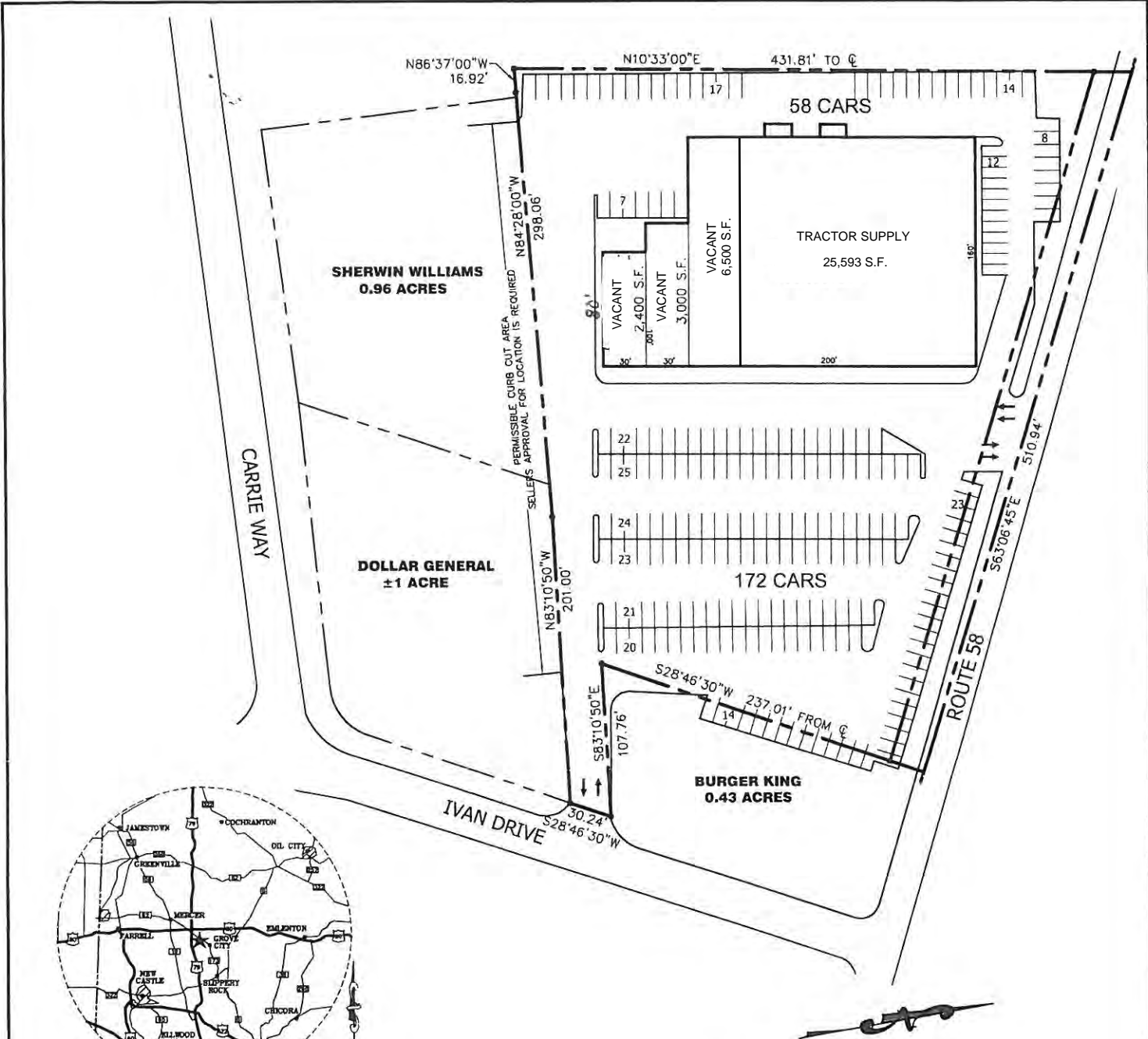
Approximately 2,400 square feet*

*Can be combined per space needs

NNN: Base rent plus prorata share of Real Estate Taxes, Insurance, and Common Area expenses, including but not limited to snow removal, lawn care, and parking lot maintenance. Tenant pays separately metered utilities for gas, electric, water, sewer, & trash removal.

CALL 330-729-1010 FOR MORE INFORMATION

www.coccaddevelopment.com



LOCATION MAP

NOTE:
 THIS SITE PLAN SHOWS ONLY THE APPROXIMATE LOCATION OF THE DEEMED PREMISES IN THE PROJECT. LESSOR RESERVES THE RIGHT TO CHANGE THE TENANTS NAMES & LOCATIONS OF OTHER TENANTS, PROVIDED THE PARKING AREA IS NOT SUBSTANTIALLY REDUCED. LESSOR ALSO RESERVES THE RIGHT TO CHANGE PARKING ARRANGEMENTS, ENTRANCES, EXITS, SERVICE AREAS, ETC. LESSOR MAKES NO REPRESENTATION THAT THE PREMISES WILL BE OCCUPIED AS SHOWN, BUT ONLY INTENDS TO SHOW WHAT MAY BE DEVELOPED IN THE PROJECT. ANY COVENANTS WITH REFERENCE TO WHAT OTHER TENANTS MAY OCCUPY SPACE IN THE PROJECT MUST APPEAR IN THE WRITTEN BODY OF THE LEASE.

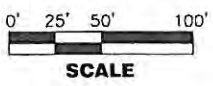
DEVELOPMENT DATA

TRADER HORN-----	32,000 S.F.
TRADER HORN-----	3,000 S.F.
BATTERY WAREHOUSE-----	2,400 S.F.
TOTAL LEASABLE AREA-----	37,400 S.F.
ACTUAL NUMBER OF PARKING SPACES PROVIDED-----	230 CARS
TOTAL LAND AREA-----	±3.64 AC.

**PLOT PLAN
 FOR
 GROVE CITY PLAZA
 SITUATE IN
 GROVE CITY, PENNSYLVANIA
 PINE TOWNSHIP, MERCER COUNTY**

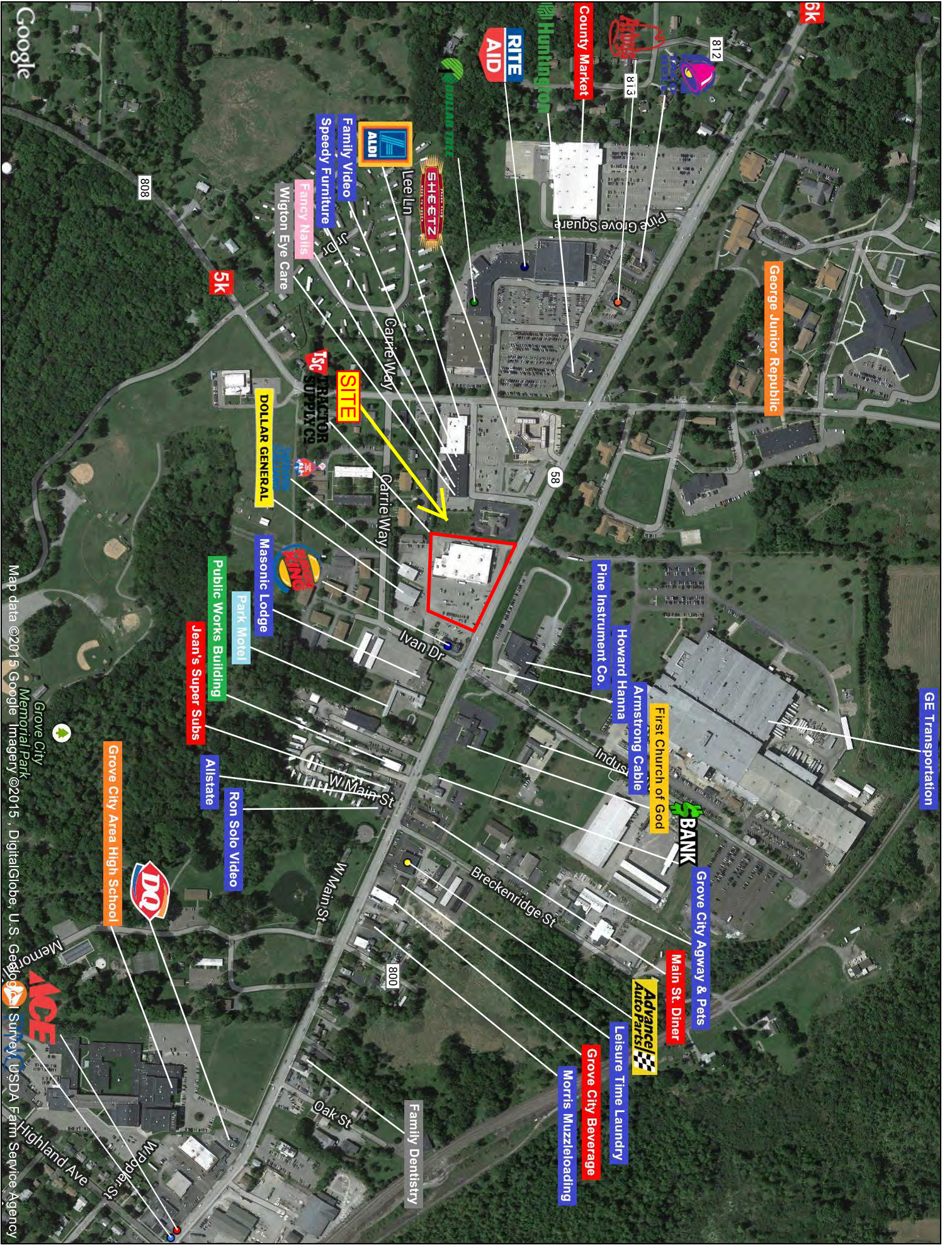
**DEVELOPED BY
 GEORGE D. ZAMIAS
 MANAGED BY
 ZAMIAS SERVICES INC**

**300 MARKET STREET
 JOHNSTOWN, PA 15901
 TELE: (814)535-3563**



REVISIONS	DATE: 02/07/72
05/08/72	11/11/87
06/01/72	10/15/88
06/10/81	09/26/05
11/03/81	
07/08/86	
12/13/85	
01/08/86	
01/02/86	
03/16/86	

PP-1

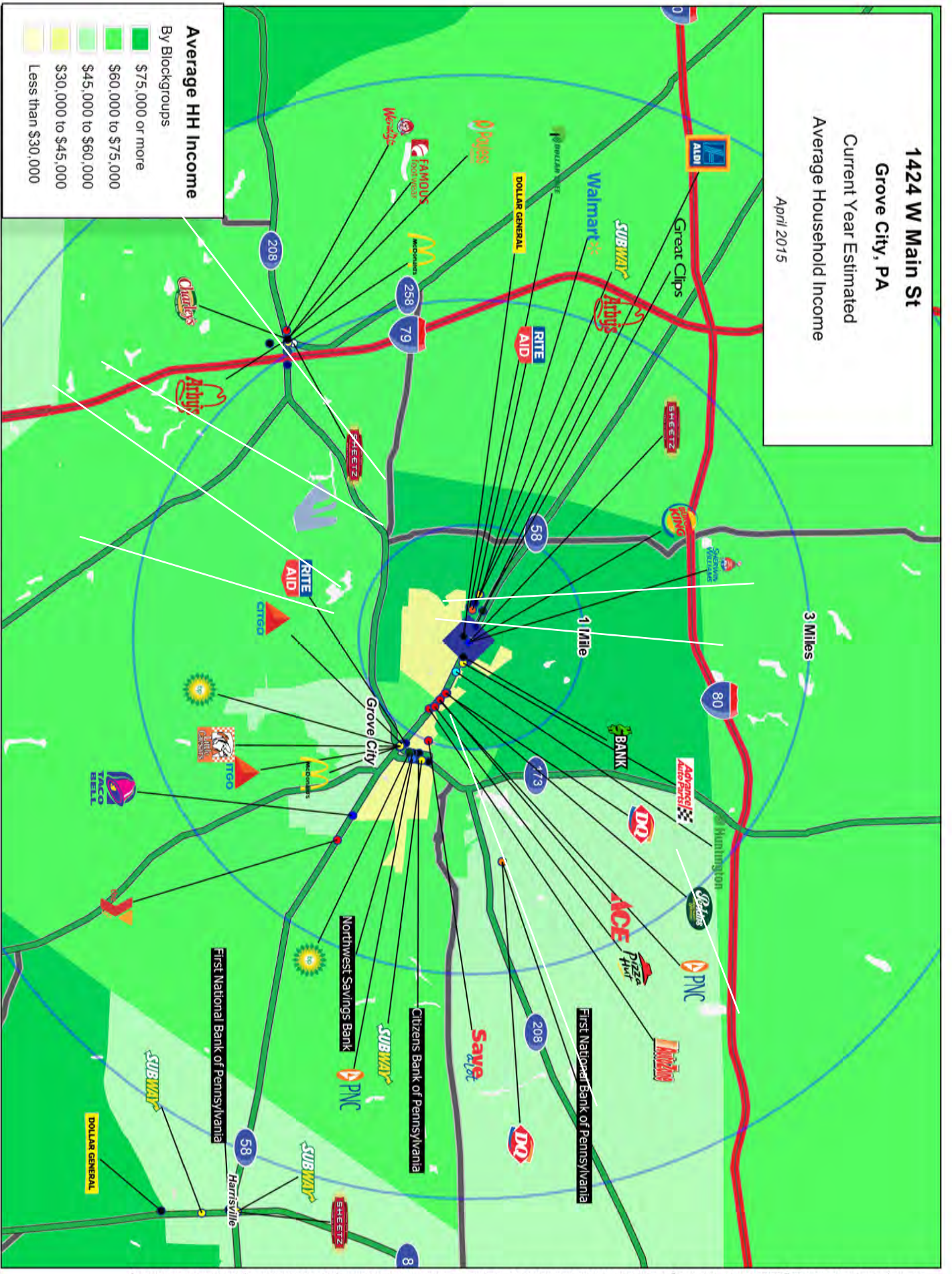


Google

This map was produced using data from private and government sources deemed to be reliable. The information herein is provided without representation or warranty.

Map data ©2015 Google Imagery ©2015 DigitalGlobe, U.S. Geo, USDA Farm Service Agency

1424 W Main St
Grove City, PA
 Current Year Estimated
 Average Household Income
 April 2015



Average HH Income
 By Blockgroups

- \$75,000 or more
- \$60,000 to \$75,000
- \$45,000 to \$60,000
- \$30,000 to \$45,000
- Less than \$30,000

This map was produced using data from private and government sources deemed to be reliable. The information herein is provided without representation or warranty.

COCCA DEVELOPMENT, LTD

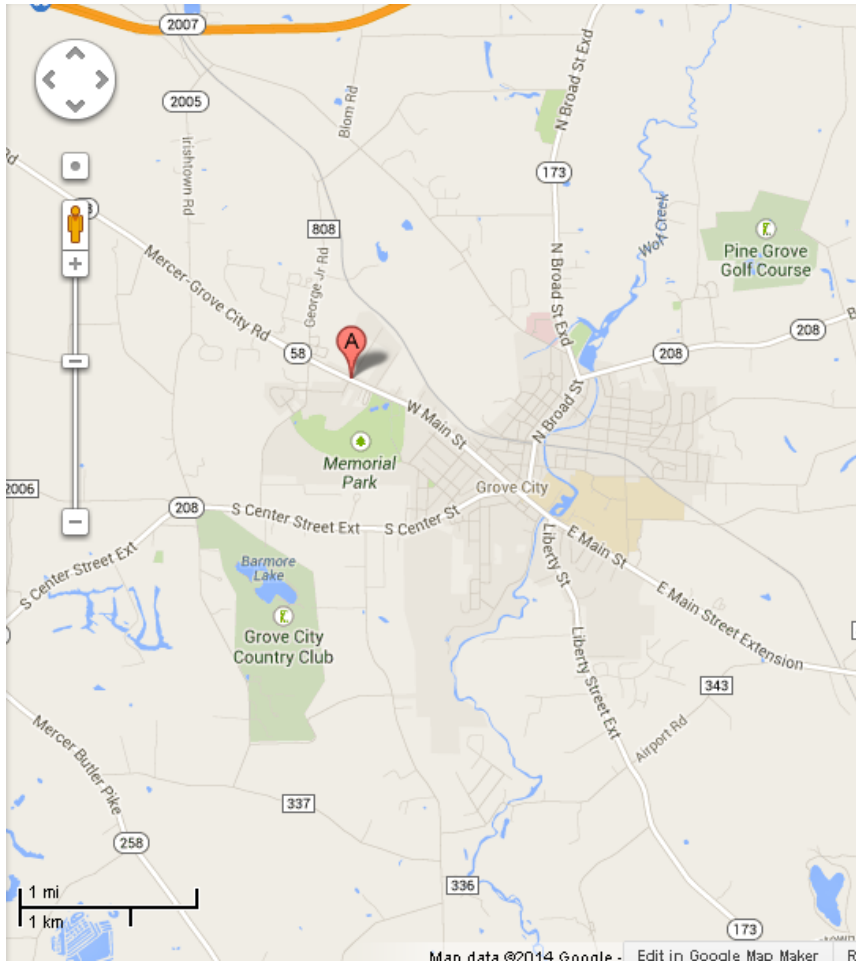
1424 West Main Street (Route 58) Grove City, PA 16127

AT A GLANCE

- ◆ Grove City is home to the Grove City Premium Outlets, one of the top outlet malls in the United States and Springfield Commons, a \$120 million dollar shopping center construction Spring 2014
- ◆ Historically a traditional industrial center, Grove City has manufactured locomotive engines, carriages, gas engines, foundry products and motor trucks
- ◆ The Wendell August Forge, America's oldest & largest forge which produces hand-wrought ornamental metalware and elegant giftware, was added to the National Register of Historic Places in 1996. It was founded in 1923 in Brockway by 38 year old Wendell McMinn August. Its original building was destroyed by fire in 2010, but was quickly rebuilt.
- ◆ 27.8% German ancestry

1424 West Main Street (Route 58)

Grove City, PA 16127

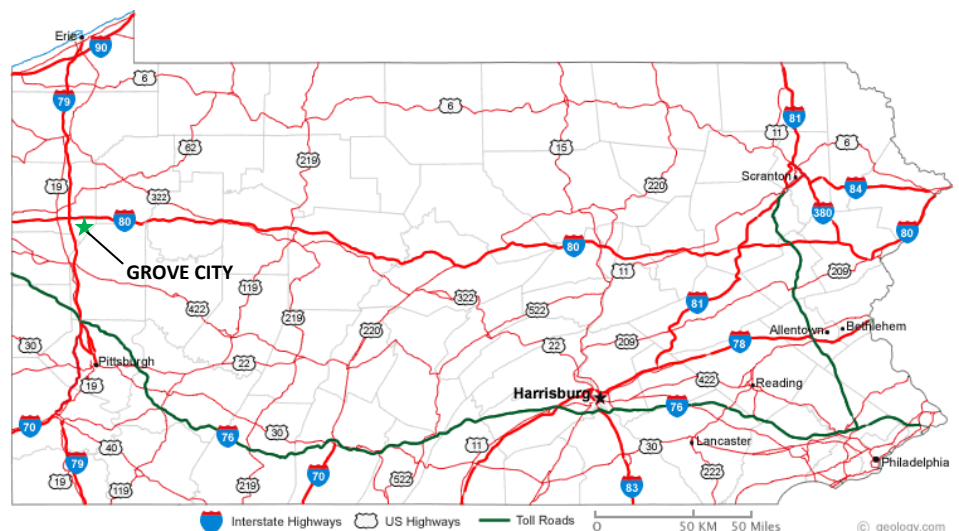


The site is located on West Main Street, approximately 4 miles south of I-80, and 9 miles southeast of Mercer.

Slippery Rock is 2.63 miles southeast, Youngstown 30 miles west, and Philadelphia 271 miles southeast.

It is also just over 3.5 miles Northeast of Grove City Prime Outlets, a major and popular shopping destination.

Grove City is a borough in Mercer County, Pennsylvania, 60 miles north of Pittsburgh and 75 miles south of Erie.



GRAPHIC PROFILE

2000-2010 Census, 2014 Estimates with 2019 Projections

Calculated using Proportional Block Groups

Lat/Lon: 41.1671/-80.1074

RGRAP3

1424 W Main St

Grove City, PA

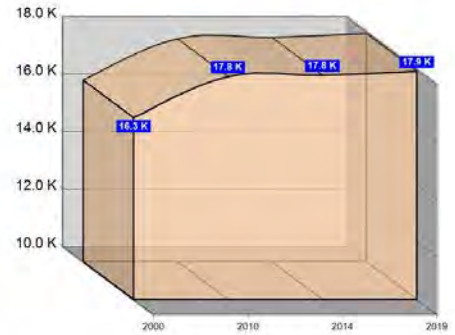
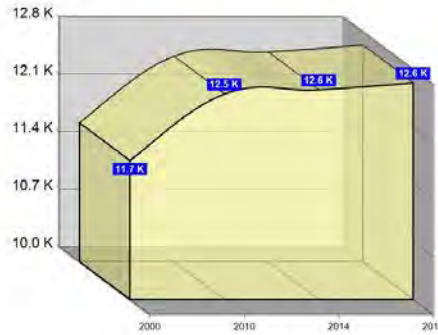
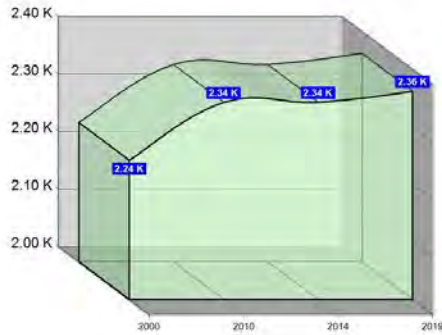
1 Mile

3 Miles

5 Miles

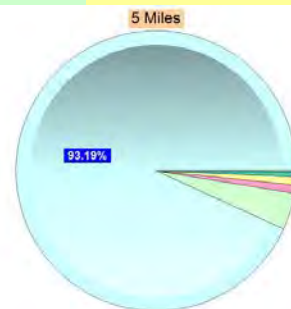
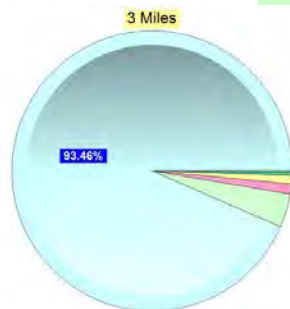
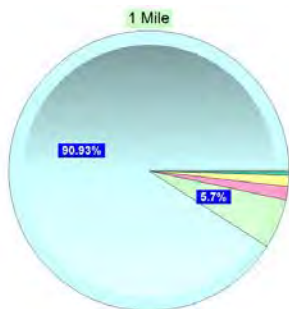
Population

Estimated Population (2014)	2,343	12,553	17,803
Projected Population (2019)	2,362	12,638	17,936
Census Population (2010)	2,343	12,503	17,754
Census Population (2000)	2,242	11,690	16,325
Projected Annual Growth (2014-2019)	19 0.2%	85 0.1%	133 0.1%
Historical Annual Growth (2010-2014)	- 1.1%	50 1.6%	49 2.0%
Historical Annual Growth (2000-2010)	101 0.4%	813 0.7%	1,429 0.9%
Estimated Population Density (2014)	746 psm	444 psm	227 psm
Trade Area Size	3.1 sq mi	28.3 sq mi	78.5 sq mi



Race and Ethnicity (2014)

Not Hispanic or Latino Population	2,309 98.6%	12,362 98.5%	17,518 98.4%
White	2,109 91.3%	11,598 93.8%	16,419 93.7%
Black or African American	133 5.7%	480 3.9%	748 4.3%
American Indian or Alaska Native	2 0.1%	17 0.1%	18 0.1%
Asian	36 1.6%	146 1.2%	169 1.0%
Hawaiian or Pacific Islander	- -	1 -	2 -
Other Race	1 -	7 0.1%	8 -
Two or More Races	28 1.2%	114 0.9%	153 0.9%
Hispanic or Latino Population	34 1.4%	190 1.5%	285 1.6%
White	22 64.2%	134 70.4%	171 60.1%
Black or African American	2 4.5%	6 3.2%	6 2.1%
American Indian or Alaska Native	- -	- 0.3%	3 0.9%
Asian	- -	- -	- -
Hispanic Hawaiian or Pacific Islander	- -	- -	- -
Other Race	9 26.4%	42 22.3%	92 32.3%
Two or More Races	2 5.0%	7 3.9%	13 4.6%



White Black or African American American Indian or Alaska Native Asian Hawaiian or Pacific Islander Other Race 2+ Races

This report was produced using data from private and government sources deemed to be reliable. The information herein is provided without representation or warranty.

GRAPHIC PROFILE

2000-2010 Census, 2014 Estimates with 2019 Projections

Calculated using Proportional Block Groups

Lat/Lon: 41.1671/-80.1074

RGRAP3

1424 W Main St

Grove City, PA

1 Mile

3 Miles

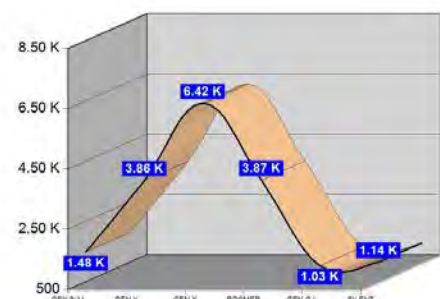
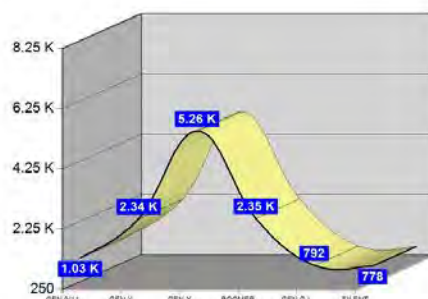
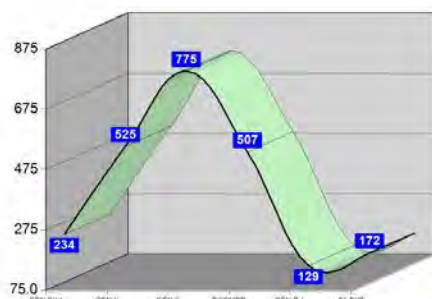
5 Miles

Age Distribution (2014)

Age Group	1 Mile	3 Miles	5 Miles
Age Under 5 Years	115 4.9%	498 4.0%	712 4.0%
Age 5 to 9 Years	119 5.1%	537 4.3%	770 4.3%
Age 10 to 14 Years	148 6.3%	667 5.3%	953 5.4%
Age 15 to 19 Years	306 13.0%	1,881 15.0%	2,187 12.3%
Age 20 to 24 Years	202 8.6%	2,135 17.0%	2,419 13.6%
Age 25 to 29 Years	119 5.1%	572 4.6%	860 4.8%
Age 30 to 34 Years	140 6.0%	575 4.6%	907 5.1%
Age 35 to 39 Years	123 5.2%	536 4.3%	873 4.9%
Age 40 to 44 Years	121 5.2%	596 4.8%	1,004 5.6%
Age 45 to 49 Years	141 6.0%	632 5.0%	1,076 6.0%
Age 50 to 54 Years	141 6.0%	678 5.4%	1,149 6.5%
Age 55 to 59 Years	132 5.7%	667 5.3%	1,075 6.0%
Age 60 to 64 Years	121 5.2%	538 4.3%	888 5.0%
Age 65 to 69 Years	112 4.8%	470 3.7%	757 4.3%
Age 70 to 74 Years	89 3.8%	419 3.3%	631 3.5%
Age 75 to 79 Years	83 3.5%	359 2.9%	510 2.9%
Age 80 to 84 Years	61 2.6%	325 2.6%	439 2.5%
Age 85 Years or Over	69 2.9%	467 3.7%	593 3.3%
Median Age	34.5	34.5	37.1

Generation (2014)

Generation	1 Mile	3 Miles	5 Miles
Generation 9/11 Millennials (Age Under 10 Years)	234 10.0%	1,034 8.2%	1,482 8.3%
Gen Y to Echo Boomers (Age 10 to 29 Years)	775 33.1%	5,255 41.9%	6,419 36.1%
Gen Xers (Age 30 to 49 Years)	525 22.4%	2,341 18.6%	3,860 21.7%
Baby Boomers (Age 50 to 69 Years)	507 21.6%	2,353 18.7%	3,869 21.7%
Silent Generation (Age 70 to 79 Years)	172 7.3%	778 6.2%	1,141 6.4%
G.I. Generation (Age 80 Years or Over)	129 5.5%	792 6.3%	1,031 5.8%



This report was produced using data from private and government sources deemed to be reliable. The information herein is provided without representation or warranty.

GRAPHIC PROFILE

2000-2010 Census, 2014 Estimates with 2019 Projections

Calculated using Proportional Block Groups

Lat/Lon: 41.1671/-80.1074

RGRAP3

1424 W Main St Grove City, PA

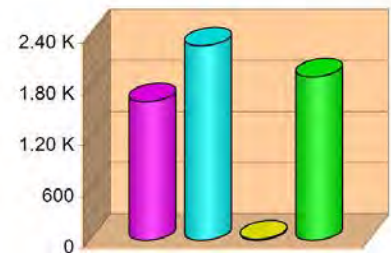
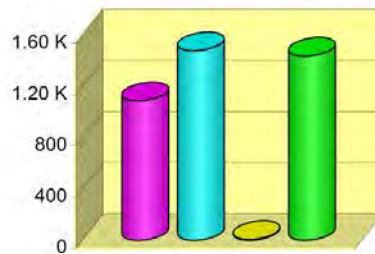
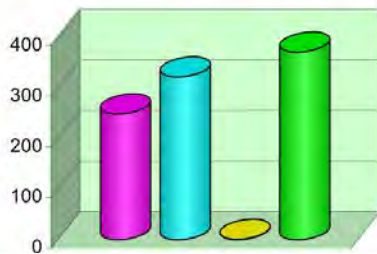
1 Mile

3 Miles

5 Miles

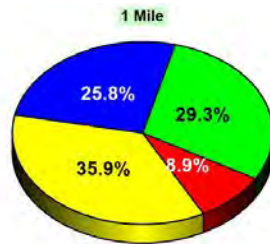
Household Type (2014)

Total Households	944	4,021	5,836
Family Households	572 34.2%	2,573 36.9%	3,905 39.1%
Family Households with Children	249 43.6%	1,091 42.4%	1,625 41.6%
Family Households No Children	323 56.4%	1,482 57.6%	2,281 58.4%
Non-Family Households	372 34.2%	1,448 36.9%	1,930 39.1%
Non-Family Households with Children	1 0.2%	7 0.5%	13 0.7%
Non-Family Households No Children	372 99.8%	1,440 99.5%	1,917 99.3%



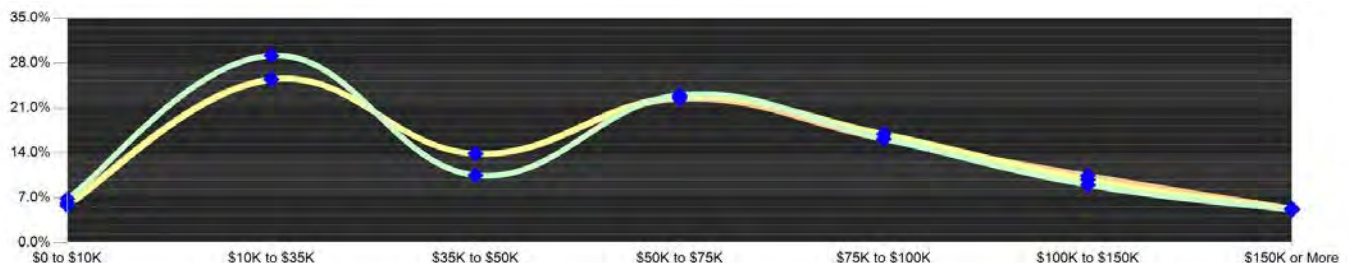
Education Attainment (2014)

Elementary or Some High School	128 8.9%	605 9.5%	1,026 10.7%
High School Graduate	516 35.9%	2,355 36.8%	3,758 39.2%
Some College or Associate Degree	371 25.8%	1,459 22.8%	2,131 22.2%
Bachelor or Graduate Degree	421 29.3%	1,972 30.9%	2,672 27.9%



Household Income (2014)

Estimated Average Household Income	\$53,823	\$56,441	\$57,561
Estimated Median Household Income	\$49,950	\$49,523	\$49,471
HH Income Under \$10,000	65 6.8%	235 5.8%	359 6.2%
HH Income \$10,000 to \$34,999	276 29.2%	1,022 25.4%	1,490 25.5%
HH Income \$35,000 to \$49,999	100 10.5%	560 13.9%	810 13.9%
HH Income \$50,000 to \$74,999	217 23.0%	915 22.8%	1,310 22.5%
HH Income \$75,000 to \$99,999	85 9.0%	397 9.9%	610 10.5%
HH Income \$100,000 to \$149,999	85 9.0%	397 9.9%	610 10.5%
HH Income \$150,000 or More	49 5.1%	210 5.2%	311 5.3%



This report was produced using data from private and government sources deemed to be reliable. The information herein is provided without representation or warranty.

EXPANDED PROFILE

2000-2010 Census, 2014 Estimates with 2019 Projections

Calculated using Proportional Block Groups

Lat/Lon: 41.1671/-80.1074

RF5

1424 W Main St

Grove City, PA

Population

	1 Mile	3 Miles	5 Miles
Estimated Population (2014)	2,343	12,553	17,803
Projected Population (2019)	2,362	12,638	17,936
Census Population (2010)	2,343	12,503	17,754
Census Population (2000)	2,242	11,690	16,325
Projected Annual Growth (2014 to 2019)	19 0.2%	85 0.1%	133 0.1%
Historical Annual Growth (2010 to 2014)	- -	50 0.1%	49 0.1%
Historical Annual Growth (2000 to 2010)	101 0.4%	813 0.7%	1,429 0.9%
Estimated Population Density (2014)	746 <i>psm</i>	444 <i>psm</i>	227 <i>psm</i>
Trade Area Size	3.14 <i>sq mi</i>	28.26 <i>sq mi</i>	78.49 <i>sq mi</i>

Households

Estimated Households (2014)	944	4,021	5,836
Projected Households (2019)	964	4,108	5,966
Census Households (2010)	929	3,955	5,739
Census Households (2000)	932	3,753	5,357
Estimated Households with Children (2014)	250 26.5%	1,099 27.3%	1,638 28.1%
Estimated Average Household Size (2014)	2.25	2.30	2.35

Average Household Income

Estimated Average Household Income (2014)	\$57,641	\$61,899	\$62,968
Projected Average Household Income (2019)	\$63,077	\$67,302	\$68,300
Estimated Average Family Income (2014)	\$74,605	\$77,377	\$76,552

Median Household Income

Estimated Median Household Income (2014)	\$53,321	\$55,654	\$55,021
Projected Median Household Income (2019)	\$58,561	\$60,887	\$59,823
Estimated Median Family Income (2014)	\$67,793	\$69,662	\$67,469

Per Capita Income

Estimated Per Capita Income (2014)	\$24,666	\$21,685	\$22,686
Projected Per Capita Income (2019)	\$27,331	\$23,925	\$24,968
Estimated Per Capita income 5 Year Growth	\$2,665 10.8%	\$2,240 10.3%	\$2,282 10.1%
Estimated Average Household Net Worth (2014)	\$340,427	\$361,404	\$368,949

Daytime Demos (2014)

Total Businesses	196	587	819
Total Employees	2,666	8,484	11,029
Company Headquarter Businesses	- -	- -	- -
Company Headquarter Employees	- -	- -	- -
Employee Population per Business	13.6	14.5	13.5
Residential Population per Business	11.9	21.4	21.7

This report was produced using data from private and government sources deemed to be reliable. The information herein is provided without representation or warranty.

EXPANDED PROFILE

2000-2010 Census, 2014 Estimates with 2019 Projections

Calculated using Proportional Block Groups

Lat/Lon: 41.1671/-80.1074

RF5

1424 W Main St Grove City, PA	1 Mile		3 Miles		5 Miles	
Race & Ethnicity						
White (2014)	2,130	90.9%	11,732	93.5%	16,590	93.2%
Black or African American (2014)	134	5.7%	486	3.9%	754	4.2%
American Indian or Alaska Native (2014)	2	0.1%	17	0.1%	21	0.1%
Asian (2014)	36	1.5%	146	1.2%	169	1.0%
Hawaiian or Pacific Islander (2014)	-	-	1	-	2	-
Other Race (2014)	10	0.4%	49	0.4%	100	0.6%
Two or More Races (2014)	30	1.3%	121	1.0%	166	0.9%
Not Hispanic or Latino Population (2014)	2,309	98.6%	12,362	98.5%	17,518	98.4%
Hispanic or Latino Population (2014)	34	1.4%	190	1.5%	285	1.6%
Not Hispanic or Latino Population (2019)	2,324	98.4%	12,428	98.3%	17,624	98.3%
Hispanic or Latino Population (2019)	38	1.6%	210	1.7%	312	1.7%
Not Hispanic or Latino Population (2010)	2,311	98.6%	12,324	98.6%	17,486	98.5%
Hispanic or Latino Population (2010)	32	1.4%	179	1.4%	268	1.5%
Not Hispanic or Latino Population (2000)	2,224	99.2%	11,596	99.2%	16,178	99.1%
Hispanic or Latino Population (2000)	19	0.8%	94	0.8%	147	0.9%
Projected Hispanic Annual Growth (2014 to 2019)	4	2.4%	20	2.1%	28	1.9%
Historic Hispanic Annual Growth (2000 to 2014)	15	5.8%	96	7.3%	138	6.7%
Age Distribution (2014)						
Age Under 5	115	4.9%	498	4.0%	712	4.0%
Age 5 to 9 Years	119	5.1%	537	4.3%	770	4.3%
Age 10 to 14 Years	148	6.3%	667	5.3%	953	5.4%
Age 15 to 19 Years	306	13.0%	1,881	15.0%	2,187	12.3%
Age 20 to 24 Years	202	8.6%	2,135	17.0%	2,419	13.6%
Age 25 to 29 Years	119	5.1%	572	4.6%	860	4.8%
Age 30 to 34 Years	140	6.0%	575	4.6%	907	5.1%
Age 35 to 39 Years	123	5.2%	536	4.3%	873	4.9%
Age 40 to 44 Years	121	5.2%	596	4.8%	1,004	5.6%
Age 45 to 49 Years	141	6.0%	632	5.0%	1,076	6.0%
Age 50 to 54 Years	141	6.0%	678	5.4%	1,149	6.5%
Age 55 to 59 Years	132	5.7%	667	5.3%	1,075	6.0%
Age 60 to 64 Years	121	5.2%	538	4.3%	888	5.0%
Age 65 to 74 Years	201	8.6%	890	7.1%	1,389	7.8%
Age 75 to 84 Years	144	6.1%	683	5.4%	949	5.3%
Age 85 Years or Over	69	2.9%	467	3.7%	593	3.3%
Median Age	34.5		34.5		37.1	
Gender Age Distribution (2014)						
Female Population	1,166	49.8%	6,242	49.7%	8,545	48.0%
Age 0 to 19 Years	265	22.7%	1,552	24.9%	2,059	24.1%
Age 20 to 64 Years	653	56.0%	3,431	55.0%	4,738	55.5%
Age 65 Years or Over	248	21.3%	1,259	20.2%	1,748	20.5%
Female Median Age	40.6		38.5		40.4	
Male Population	1,177	50.2%	6,311	50.3%	9,258	52.0%
Age 0 to 19 Years	423	35.9%	2,031	32.2%	2,563	27.7%
Age 20 to 64 Years	588	50.0%	3,499	55.4%	5,513	59.5%
Age 65 Years or Over	166	14.1%	781	12.4%	1,182	12.8%
Male Median Age	28.5		30.5		34.2	

This report was produced using data from private and government sources deemed to be reliable. The information herein is provided without representation or warranty.

EXPANDED PROFILE

2000-2010 Census, 2014 Estimates with 2019 Projections

Calculated using Proportional Block Groups

Lat/Lon: 41.1671/-80.1074

RF5

1424 W Main St Grove City, PA	1 Mile		3 Miles		5 Miles	
Household Income Distribution (2014)						
HH Income \$200,000 or More	14	1.4%	67	1.7%	110	1.9%
HH Income \$150,000 to \$199,999	35	3.7%	143	3.6%	200	3.4%
HH Income \$100,000 to \$149,999	85	9.0%	397	9.9%	610	10.5%
HH Income \$75,000 to \$99,999	153	16.2%	682	17.0%	945	16.2%
HH Income \$50,000 to \$74,999	217	23.0%	915	22.8%	1,310	22.5%
HH Income \$35,000 to \$49,999	100	10.5%	560	13.9%	810	13.9%
HH Income \$25,000 to \$34,999	113	11.9%	400	10.0%	580	9.9%
HH Income \$15,000 to \$24,999	115	12.2%	443	11.0%	659	11.3%
HH Income Under \$15,000	113	11.9%	414	10.3%	611	10.5%
HH Income \$35,000 or More	604	64.0%	2,764	68.7%	3,986	68.3%
HH Income \$75,000 or More	287	30.4%	1,289	32.1%	1,866	32.0%
Housing (2014)						
Total Housing Units	1,013		4,268		6,183	
Housing Units Occupied	944	93.2%	4,021	94.2%	5,836	94.4%
Housing Units Owner-Occupied	612	64.9%	2,786	69.3%	4,305	73.8%
Housing Units, Renter-Occupied	332	35.1%	1,235	30.7%	1,531	26.2%
Housing Units, Vacant	69	6.8%	247	5.8%	347	5.6%
Marital Status (2014)						
Never Married	592	30.2%	4,752	43.8%	5,947	38.7%
Currently Married	1,004	51.2%	4,218	38.9%	6,408	41.7%
Separated	70	3.6%	377	3.5%	763	5.0%
Widowed	173	8.8%	810	7.5%	1,109	7.2%
Divorced	121	6.2%	694	6.4%	1,141	7.4%
Household Type (2014)						
Population Family	1,641	70.0%	7,406	59.0%	11,214	63.0%
Population Non-Family	483	20.6%	1,832	14.6%	2,485	14.0%
Population Group Quarters	219	9.3%	3,315	26.4%	4,104	23.1%
Family Households	572	60.5%	2,573	64.0%	3,905	66.9%
Non-Family Households	372	39.5%	1,448	36.0%	1,930	33.1%
Married Couple with Children	179	17.8%	792	18.8%	1,192	18.6%
Average Family Household Size	2.9		2.9		2.9	
Household Size (2014)						
1 Person Households	320	33.9%	1,267	31.5%	1,673	28.7%
2 Person Households	319	33.7%	1,399	34.8%	2,104	36.0%
3 Person Households	129	13.7%	585	14.5%	897	15.4%
4 Person Households	104	11.0%	458	11.4%	700	12.0%
5 Person Households	48	5.1%	198	4.9%	298	5.1%
6 or More Person Households	24	2.6%	115	2.9%	165	2.8%
Household Vehicles (2014)						
Households with 0 Vehicles Available	93	9.9%	270	6.7%	351	6.0%
Households with 1 Vehicles Available	407	43.1%	1,418	35.3%	1,908	32.7%
Households with 2 or More Vehicles Available	444	47.0%	2,333	58.0%	3,577	61.3%
Total Vehicles Available	1,445		6,925		10,613	
Average Vehicles Per Household	1.5		1.7		1.8	

This report was produced using data from private and government sources deemed to be reliable. The information herein is provided without representation or warranty.

EXPANDED PROFILE

2000-2010 Census, 2014 Estimates with 2019 Projections

Calculated using Proportional Block Groups

Lat/Lon: 41.1671/-80.1074

RF5

1424 W Main St Grove City, PA	1 Mile	3 Miles	5 Miles
Labor Force (2014)			
Estimated Labor Population Age 16 Years or Over	1,745	7,518	11,183
Estimated Civilian Employed	928 53.2%	4,055 53.9%	6,079 54.4%
Estimated Civilian Unemployed	42 2.4%	186 2.5%	291 2.6%
Estimated in Armed Forces	2 0.1%	8 0.1%	12 0.1%
Estimated Not in Labor Force	773 44.3%	3,269 43.5%	4,801 42.9%
Unemployment Rate	2.4%	2.5%	2.6%
Occupation (2010)			
Occupation: Population Age 16 Years or Over	996	4,882	7,083
Management, Business, Financial Operations	162 16.3%	663 13.6%	916 12.9%
Professional, Related	254 25.5%	1,208 24.7%	1,671 23.6%
Service	166 16.7%	1,094 22.4%	1,519 21.4%
Sales, Office	224 22.5%	1,067 21.8%	1,504 21.2%
Farming, Fishing, Forestry	- -	4 0.1%	18 0.3%
Construct, Extraction, Maintenance	61 6.1%	276 5.6%	482 6.8%
Production, Transport Material Moving	129 12.9%	569 11.7%	972 13.7%
White Collar Workers	640 64.2%	2,938 60.2%	4,092 57.8%
Blue Collar Workers	356 35.8%	1,944 39.8%	2,991 42.2%
Consumer Expenditure (2014)			
Total Household Expenditure	\$45.3 M	\$203 M	\$298 M
Total Non-Retail Expenditure	\$26.0 M 57.5%	\$117 M 57.5%	\$172 M 57.5%
Total Retail Expenditure	\$19.3 M 42.5%	\$86.3 M 42.5%	\$127 M 42.5%
Apparel	\$2.17 M 4.8%	\$9.70 M 4.8%	\$14.2 M 4.8%
Contributions	\$1.64 M 3.6%	\$7.34 M 3.6%	\$10.8 M 3.6%
Education	\$1.04 M 2.3%	\$4.64 M 2.3%	\$6.82 M 2.3%
Entertainment	\$2.52 M 5.6%	\$11.3 M 5.6%	\$16.6 M 5.6%
Food and Beverages	\$7.00 M 15.4%	\$31.3 M 15.4%	\$46.0 M 15.4%
Furnishings and Equipment	\$1.98 M 4.4%	\$8.88 M 4.4%	\$13.0 M 4.4%
Gifts	\$1.17 M 2.6%	\$5.26 M 2.6%	\$7.73 M 2.6%
Health Care	\$2.83 M 6.2%	\$12.6 M 6.2%	\$18.6 M 6.2%
Household Operations	\$1.58 M 3.5%	\$7.10 M 3.5%	\$10.4 M 3.5%
Miscellaneous Expenses	\$766 K 1.7%	\$3.42 M 1.7%	\$5.02 M 1.7%
Personal Care	\$660 K 1.5%	\$2.95 M 1.5%	\$4.33 M 1.5%
Personal Insurance	\$451 K 1.0%	\$2.03 M 1.0%	\$2.98 M 1.0%
Reading	\$149 K 0.3%	\$669 K 0.3%	\$981 K 0.3%
Shelter	\$8.70 M 19.2%	\$39.0 M 19.2%	\$57.4 M 19.2%
Tobacco	\$305 K 0.7%	\$1.36 M 0.7%	\$2.00 M 0.7%
Transportation	\$9.13 M 20.2%	\$41.1 M 20.2%	\$60.3 M 20.2%
Utilities	\$3.22 M 7.1%	\$14.3 M 7.1%	\$21.0 M 7.0%
Educational Attainment (2014)			
Adult Population Age 25 Years or Over	1,436	6,392	9,587
Elementary (Grade Level 0 to 8)	29 2.0%	186 2.9%	326 3.4%
Some High School (Grade Level 9 to 11)	99 6.9%	419 6.6%	700 7.3%
High School Graduate	516 35.9%	2,355 36.8%	3,758 39.2%
Some College	249 17.4%	1,046 16.4%	1,511 15.8%
Associate Degree Only	121 8.5%	413 6.5%	620 6.5%
Bachelor Degree Only	259 18.0%	1,260 19.7%	1,699 17.7%
Graduate Degree	162 11.3%	713 11.1%	973 10.2%

This report was produced using data from private and government sources deemed to be reliable. The information herein is provided without representation or warranty.

EXPANDED PROFILE

2000-2010 Census, 2014 Estimates with 2019 Projections

Calculated using Proportional Block Groups

Lat/Lon: 41.1671/-80.1074

RF5

1424 W Main St

Grove City, PA

Units In Structure (2010)

	1 Mile		3 Miles		5 Miles	
1 Detached Unit	599	64.6%	2,852	72.1%	4,306	75.0%
1 Attached Unit	32	3.5%	159	4.0%	212	3.7%
2 to 4 Units	124	13.3%	367	9.3%	391	6.8%
5 to 9 Units	21	2.3%	122	3.1%	132	2.3%
10 to 19 Units	54	5.8%	85	2.2%	88	1.5%
20 to 49 Units	35	3.7%	49	1.2%	54	0.9%
50 or More Units	5	0.5%	127	3.2%	141	2.5%
Mobile Home or Trailer	59	6.4%	192	4.9%	415	7.2%
Other Structure	-	-	1	-	1	-

Homes Built By Year (2010)

Homes Built 2005 or later	24	2.6%	167	4.2%	315	5.5%
Homes Built 2000 to 2004	47	5.1%	206	5.2%	331	5.8%
Homes Built 1990 to 1999	75	8.1%	312	7.9%	549	9.6%
Homes Built 1980 to 1989	69	7.4%	347	8.8%	533	9.3%
Homes Built 1970 to 1979	64	6.9%	368	9.3%	618	10.8%
Homes Built 1960 to 1969	115	12.4%	343	8.7%	487	8.5%
Homes Built 1950 to 1959	134	14.4%	551	13.9%	730	12.7%
Homes Built Before 1949	400	43.0%	1,660	42.0%	2,175	37.9%

Home Values (2010)

Home Values \$1,000,000 or More	8	1.3%	17	0.6%	30	0.7%
Home Values \$500,000 to \$999,999	16	2.7%	80	2.9%	118	2.8%
Home Values \$400,000 to \$499,999	7	1.2%	47	1.7%	69	1.6%
Home Values \$300,000 to \$399,999	19	3.2%	120	4.4%	190	4.5%
Home Values \$200,000 to \$299,999	58	9.7%	388	14.1%	687	16.2%
Home Values \$150,000 to \$199,999	128	21.2%	545	19.8%	806	19.0%
Home Values \$100,000 to \$149,999	149	24.7%	666	24.3%	985	23.3%
Home Values \$70,000 to \$99,999	109	18.1%	518	18.9%	737	17.4%
Home Values \$50,000 to \$69,999	41	6.7%	167	6.1%	269	6.3%
Home Values \$25,000 to \$49,999	30	5.0%	96	3.5%	160	3.8%
Home Values Under \$25,000	37	6.1%	101	3.7%	187	4.4%
Owner-Occupied Median Home Value	\$121,298		\$134,962		\$137,155	
Renter-Occupied Median Rent	\$554		\$526		\$520	

Transportation To Work (2010)

Drive to Work Alone	750	77.2%	3,605	74.6%	5,494	78.1%
Drive to Work in Carpool	59	6.1%	222	4.6%	388	5.5%
Travel to Work by Public Transportation	6	0.6%	20	0.4%	27	0.4%
Drive to Work on Motorcycle	-	-	7	0.1%	14	0.2%
Walk or Bicycle to Work	104	10.7%	271	5.6%	289	4.1%
Other Means	14	1.4%	25	0.5%	44	0.6%
Work at Home	38	3.9%	681	14.1%	775	11.0%

Travel Time (2010)

Travel to Work in 14 Minutes or Less	488	52.4%	2,145	51.7%	3,051	48.8%
Travel to Work in 15 to 29 Minutes	197	21.1%	889	21.4%	1,485	23.7%
Travel to Work in 30 to 59 Minutes	168	18.1%	861	20.7%	1,342	21.4%
Travel to Work in 60 Minutes or More	79	8.5%	256	6.2%	379	6.1%
Average Minutes Travel to Work	13.4		13.5		14.4	

This report was produced using data from private and government sources deemed to be reliable. The information herein is provided without representation or warranty.