

the EMBASSY *portfolio*



3560 W MARKET STREET

Located in the heart of Fairlawn, outside of the Parkway, this sister building offers all of the amenities of being in the Park. It is close to many amenities and offers outstanding signage opportunities.

- Building conference room and kitchen area
- Street front signage
- Updated Atrium and Lobby

AVAILABILITIES

Suite 100 - 3,861 RSF • Suite 115 - 4,759 RSF • Suite 200 - 6,976 RSF •
Suite 305 B - 247 RSF • Suite 305 C - 368 RSF • Suite 310 - 1,888 RSF
(Suite 100/115/200 - contiguous 15,596 RSF)



WWW.CBRE.US/EMBASSYPORTFOLIO

FOR MORE
INFORMATION,
PLEASE CONTACT:

steve lazarides
+1 330 670 4410
steve.lazarides@cbre.com

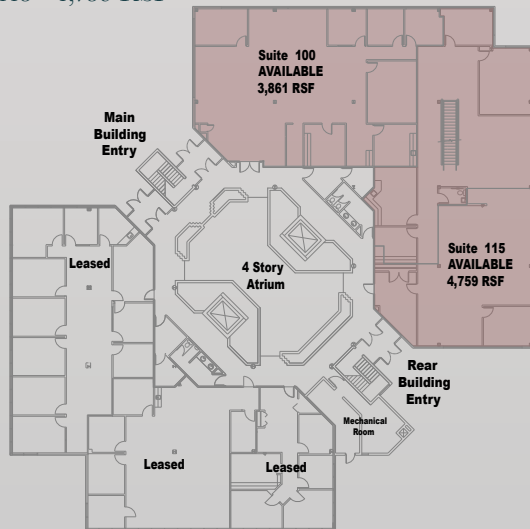
katie thome
+1 330 670 4411
katie.thome@cbre.com

CBRE

the EMBASSY portfolio

Suite 100 - 3,861 RSF

Suite 115 - 4,759 RSF



(100/115/200 – 15,596 RSF via internal staircase)

Suite 200 - 6,976 RSF

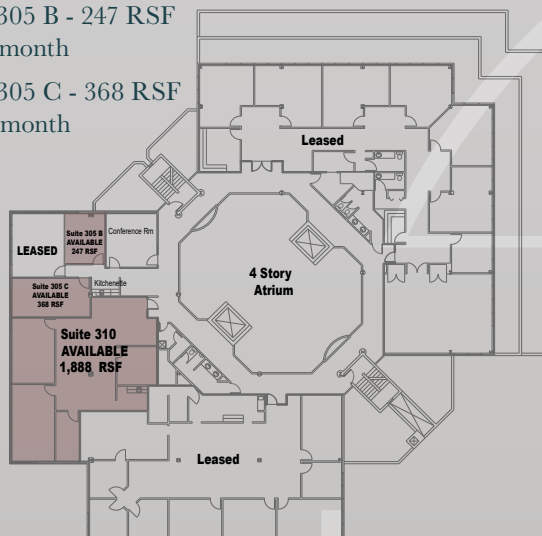


Suite 305 B - 247 RSF

\$455/month

Suite 305 C - 368 RSF

\$680/month



Suite 310 - 1,888 RSF



3560 W Market Street, Akron, Ohio 44333

FOR MORE
INFORMATION,
PLEASE CONTACT:

steve lazarides
+1 330 670 4410
steve.lazarides@cbre.com

katie thome
+1 330 670 4411
katie.thome@cbre.com

© 2025 CBRE, Inc. All rights reserved. This information has been obtained from sources believed reliable, but has not been verified for accuracy or completeness. Any projections, opinions, or estimates are subject to uncertainty. The information may not represent the current or future performance of the property. You and your advisors should conduct a careful, independent investigation of the property and verify all information. Any reliance on this information is solely at your own risk. CBRE and the CBRE logo are service marks of CBRE, Inc. and/or its affiliated or related companies in the United States and other countries. All other marks displayed on this document are the property of their respective owners. Photos herein are the property of their respective owners and use of these images without the express written consent of the owner is prohibited.

CBRE