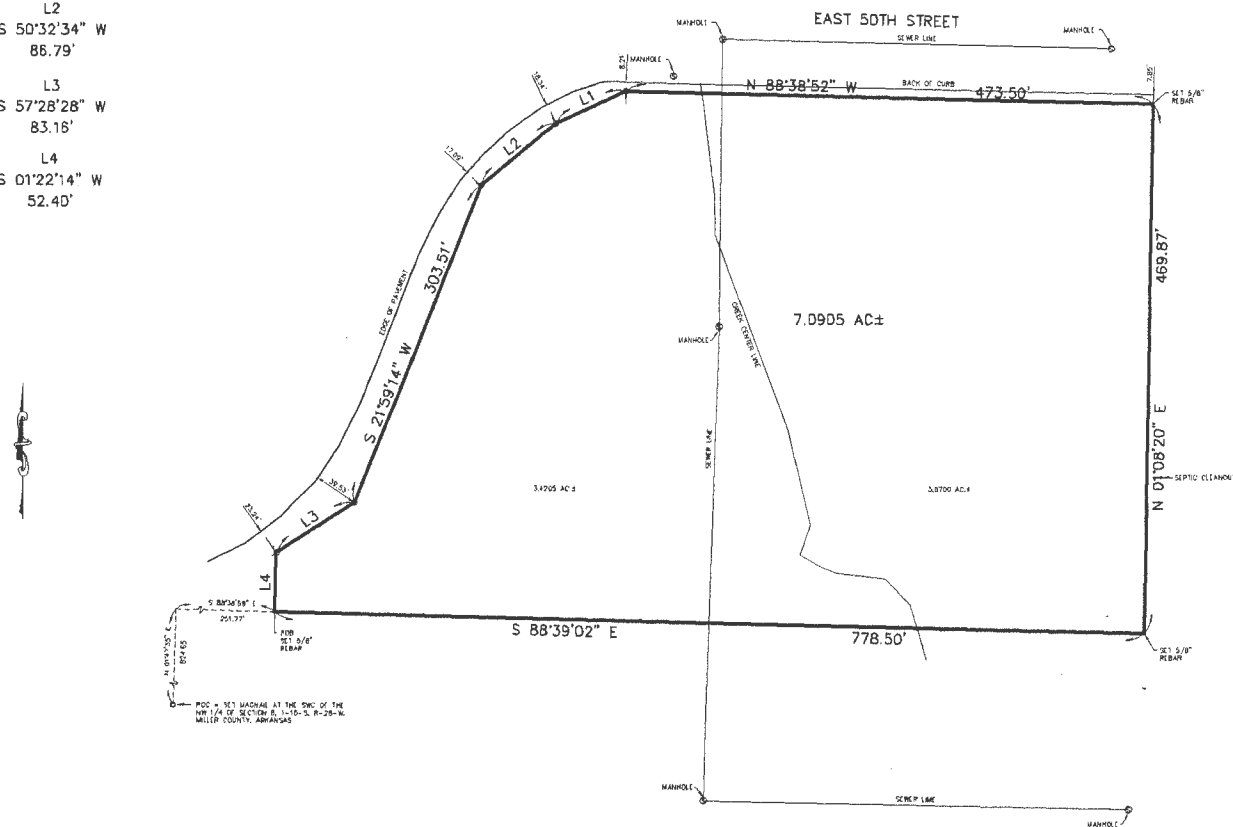


L1
S 65°03'52" W
68.65'

L2
S 50°32'34" W
86.79'

L3
S 57°28'28" W
83.16'

L4
S 01°22'14" W
52.40'



PROPERTY DESCRIPTION

ALL THAT CERTAIN TRACT OR PARCEL OF LAND BEING A PART OF THE SOUTHWEST QUARTER (SW 1/4) OF THE NORTHWEST QUARTER (NW 1/4) OF SECTION EIGHT (8), TOWNSHIP FIFTEEN (15) SOUTH, RANGE TWENTY-EIGHT (28) WEST, MILLER COUNTY, ARKANSAS AND BEING A PART OF A 15 ACRE TRACT (TRACT 2) AS DESCRIBED IN WARRANTY DEED FROM SOUTHWEST ARKANSAS UNLIMITED, INC. TO GERALD H. TEASLEY, ET AL DATED MARCH 2, 1981, RECORDED IN VOLUME 286, PAGE 205 OF THE DEED RECORDS OF MILLER COUNTY, ARKANSAS AND BEING MORE PARTICULARLY DESCRIBED AS FOLLOWS:

COMMENCING: AT A SET MAG NAIL FOR CORNER AT THE SOUTHWEST CORNER OF THE SW 1/4 OF SAID SECTION 8, T-15-S, R-28-W, MILLER COUNTY, ARKANSAS;

THENCE: N 01°47'35" E, WITH THE WEST BOUNDARY LINE OF THE SW 1/4 OF SAID SECTION 8, 824.65 FEET TO A POINT;

THENCE: S 88°38'50" W, 251.77 FEET TO A SET 5/8" REBAR WITH PLASTIC CAP (STAMPED R.P.L.S. 1129 TYPICAL) FOR CORNER AND BEING THE POINT OF BEGINNING FOR THE HEREIN DESCRIBED TRACT OF LAND;

THENCE: S 88°39'02" E, 778.50 FEET TO A SET 5/8" REBAR WITH PLASTIC CAP FOR CORNER;

THENCE: N 01°08'20" E, 469.87 FEET TO A SET 5/8" REBAR WITH PLASTIC CAP FOR CORNER ON THE SOUTH RIGHT-OF-WAY LINE OF EAST 50TH STREET;

THENCE: N 88°38'52" W, WITH THE SOUTH RIGHT-OF-WAY LINE OF EAST 50TH STREET, 473.50 FEET TO A SET 5/8" REBAR WITH PLASTIC FOR CORNER;

THENCE: S 65°03'52" W, WITH THE SOUTH RIGHT-OF-WAY LINE OF EAST 50TH STREET, 68.65 FEET TO A SET 5/8" REBAR WITH PLASTIC FOR CORNER;

THENCE: S 50°32'34" W, WITH THE SOUTH RIGHT-OF-WAY LINE OF EAST 50TH STREET, 86.79 FEET TO A SET 5/8" REBAR WITH PLASTIC FOR CORNER;

THENCE: S 21°59'14" W, WITH THE SOUTH RIGHT-OF-WAY LINE OF EAST 50TH STREET, 303.51 FEET TO A SET 5/8" REBAR WITH PLASTIC FOR CORNER;

THENCE: S 57°28'28" W, WITH THE SOUTH RIGHT-OF-WAY LINE OF EAST 50TH STREET, 83.16 FEET TO A SET 5/8" REBAR WITH PLASTIC FOR CORNER;

THENCE: S 01°22'14" W, 52.40 FEET TO THE POINT OF BEGINNING, CONTAINING 7.0905 ACRE OF LAND, MORE OR LESS.

500-155-28W-D-08-430-48-1129

BASIS OF BEARINGS: BEARINGS ARE BASED ON GEODETIC NORTH AS MEASURED USING GPS (GLOBAL POSITIONING SYSTEM) ON OCTOBER 7, 2019, OPERATING WITHIN THE PARAMETERS OF WGS-84.

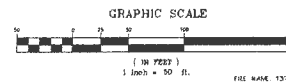
**FOR REVIEW
ONLY**

THIS TRACT IS PARTIALLY WITHIN A DESIGNATED FLOOD PLAIN, ACCORDING TO FEDERAL INSURANCE ADMINISTRATION BASE MAP, MAP NUMBER 09010000, EFFECTIVE DATE DECEMBER 18, 2009.

THE UNDERSIGNED DOES HEREBY CERTIFY THAT THIS SURVEY WAS MADE ON THE GROUND OF THE PROPERTY LEGALLY DESCRIBED HEREON, AND IS CORRECT, AND THAT THERE ARE NO DISCREPANCIES, CONFLICTS, SHORTAGES IN AREA, BOUNDARY LINE CONFLICTS, ENCROACHMENT OF IMPROVEMENTS, VISIBLE EASEMENTS OR RIGHTS-OF-WAY (ALL EASEMENTS AND RIGHTS-OF-WAY ARE SHOWN IF TITLE COMMITMENT WAS PROVIDED PRIOR TO FIELD WORK), EXCEPT AS SHOWN HEREON, AND THAT SAID PROPERTY HAS ACCESS TO AND FROM A PUBLIC ROADWAY.

Ⓢ INDICATES SET 5/8" REBAR WITH PLASTIC CAP (STAMPED R.P.L.S. 4874)

SYNOPSIS: LYNCH SURVEYING, INC. ALL PLANS ARE REPRODUCED BY THE OWNER OF THE ORIGINAL COPY. NO REPRODUCTION OF PLANS WITHOUT EXPRESS WRITTEN CONSENT. COPIES AVAILABLE FOR EXAMINATION FROM ONE YEAR. LYNCH SURVEYING COMPANY, INC. WILL NOT BE RESPONSIBLE FOR ANY USE OTHER THAN THAT FOR WHICH IT WAS ORIGINALLY CREATED.



REVISION	DATE	DESCRIPTION	SHEET NO.
			1
LYNCH SURVEYING CO., INC.			
TEXAS FIRM NO. 10104900			
3605 MAGNOLIA STREET			
TEKARKANA, TEXAS 75603			
BUSINESS (903) 791-1992 FAX (903) 791-1395			
Scale: 1" = 50'			
DATE: OCT. 2019			
JOB NO. 13731			
Des. By: RDL			
Drawn By: PLC			
Check By: RDL			

Property Description

All that certain tract or parcel of land being a part of the Southwest Quarter (SW 1/4) of the Northwest Quarter (NW 1/4) of Section Eight (8), Township Fifteen (15) South, Range Twenty-Eight (28) West, Miller County, Arkansas and being a part of a 15 Acre tract (Tract 2) as described in Warranty Deed from Southwest Arkansas Unlimited, Inc. to Gerald H. Teasley, et al dated March 2, 1981, recorded in Volume 286, Page 205 of the Deed Records of Miller County, Arkansas and being more particularly described as follows:

COMMENCING: At a set Mag Nail for corner at the Southwest corner of the SW 1/4 of said Section 8, T-15-S, R-28-W, Miller County, Arkansas;

THENCE: N 01°47'35" E, with the West boundary line of the SW 1/4 of said Section 8, 824.65 feet to a point;

THENCE: S 88°38'59" W, 251.77 feet to a set 5/8" rebar with plastic cap (Stamped R.P.L.S. 1129 Typical) for corner and being the POINT OF BEGINNING for the herein described tract of land;

THENCE: S 88°39'02" E, 778.50 feet to a set 5/8" rebar with plastic cap for corner;

THENCE: N 01°08'20" E, 469.87 feet to a set 5/8" rebar with plastic cap for corner on the South Right-of-Way line of East 50th Street;

THENCE: N 88°38'52" W, with the South Right-of-Way line of East 50th Street, 473.50 feet to a set 5/8" rebar with plastic cap for corner;

THENCE: S 65°03'52" W, with the South Right-of-Way line of East 50th Street, 68.65 feet to a set 5/8" rebar with plastic for corner;

THENCE: S 50°32'34" W, with the South Right-of-Way line of East 50th Street, 86.79 feet to a set 5/8" rebar with plastic for corner;

THENCE: S 21°59'14" W, with the South Right-of-Way line of East 50th Street, 303.51 feet to a set 5/8" rebar with plastic for corner;

THENCE: S 57°28'28" W, with the South Right-of-Way line of East 50th Street, 83.16 feet to a set 5/8" rebar with plastic for corner;

THENCE: S 01°22'14" W, 52.40 feet to the POINT OF BEGINNING, containing 7.0905 Acre of land, more or less.

500-15S-28W-0-08-430-46-1129

BASIS OF BEARINGS: Bearings are based on Geodetic North as measured using GPS (Global Positioning System) on October 7, 2019, operating within the parameters of WGS-84.