

299 THIRD AVENUE

SOUTHEAST CORNER OF E 23RD ST
GRAMERCY



LEASED

SPACE A

AKSR
RETAIL SPACE
FOR LEASE
David Sabharwal David Cohen
646.784.7735 646.784.7735
ksr@ksr.com
RETAIL SPACE
FOR LEASE
David Sabharwal David Cohen
646.784.7735 646.784.7735
ksr@ksr.com

299

THIRD AVENUE

SE CORNER OF E23RD ST | GRAMERCY

PROPERTY HIGHLIGHTS:

- New construction
- Tremendous corner with wraparound frontage
- Heavy foot traffic area
- Impressive 16' ceiling height
- Steps away from Baruch College
- Neighboring tenants include: *Pick A Bagel, Molly's, Taco Bell, Taproom No.307, The Globe, Think Coffee, Awe Sum Dim Sum, Gramercy Ale House, SVA NYC*

SIZE:

Space A: 1,657 SF Ground Floor (Corner)
505 SF Mezzanine
686 SF Basement

Space B: **LEASED** 1,200 SF Ground Floor (Inline)

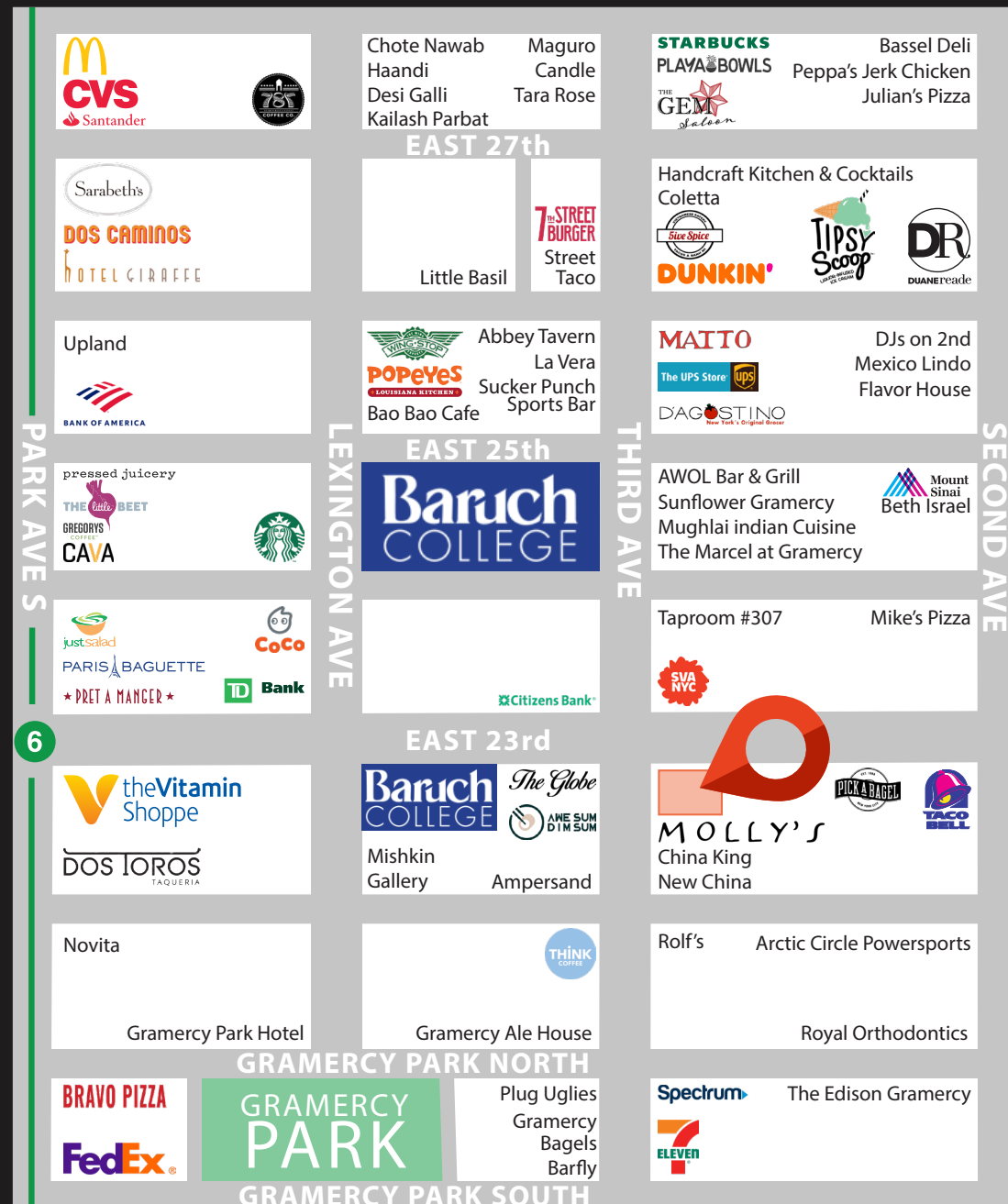
FRONTAGE: 110' Wraparound

CEILING HEIGHT: 16'

POSSESSION: ASAP

ASKING RENT: Upon Request

TRANSPORTATION: 6



CONTACT OUR BROKERS FOR MORE INFORMATION

DAVID GREEN
DGreen@ksrny.com
516.320.0260

IKE BIBI
IBibi@ksrny.com
347.417.2860



All information supplied in this marketing presentation and/or flyer is from sources deemed reliable and is furnished subject to errors, omissions, modifications, removal of listings from sale/lease and to any listing condition. Any square footage, dimensions, floor plans and/or technical data set forth are approximations and are subject to further elaboration/confirmation.

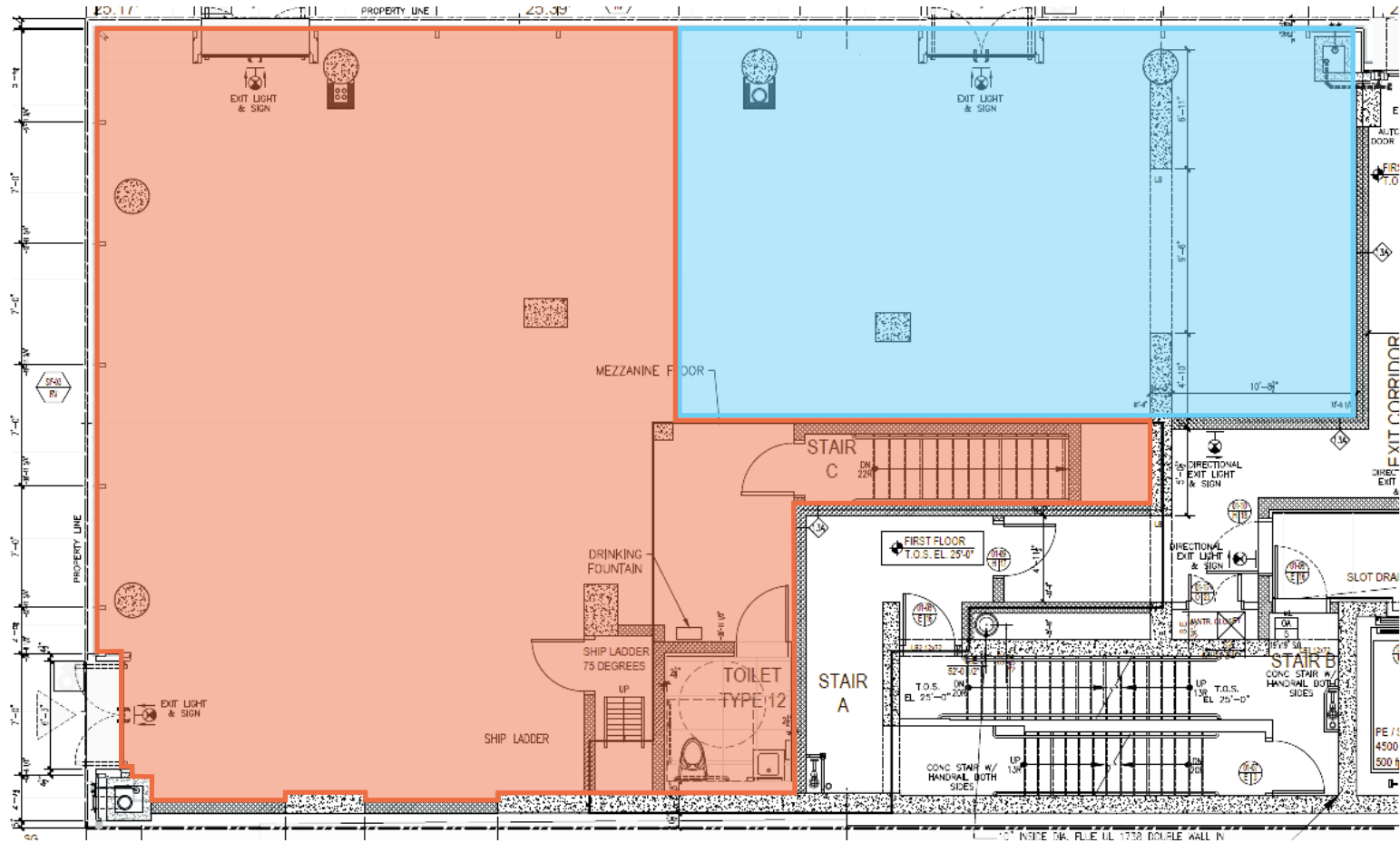
299 THIRD AVENUE

SOUTHEAST CORNER OF E 23RD ST
GRAMERCY

FLOOR PLANS: GROUND FLOOR

SPACE A: 1,657 SF (CORNER)

SPACE B: 1,200 SF (INLINE)



CONTACT OUR BROKERS FOR MORE INFORMATION

DAVID GREEN
DGreen@ksrny.com
516.320.0260

IKE BIBI
IBibi@ksrny.com
347.417.2860

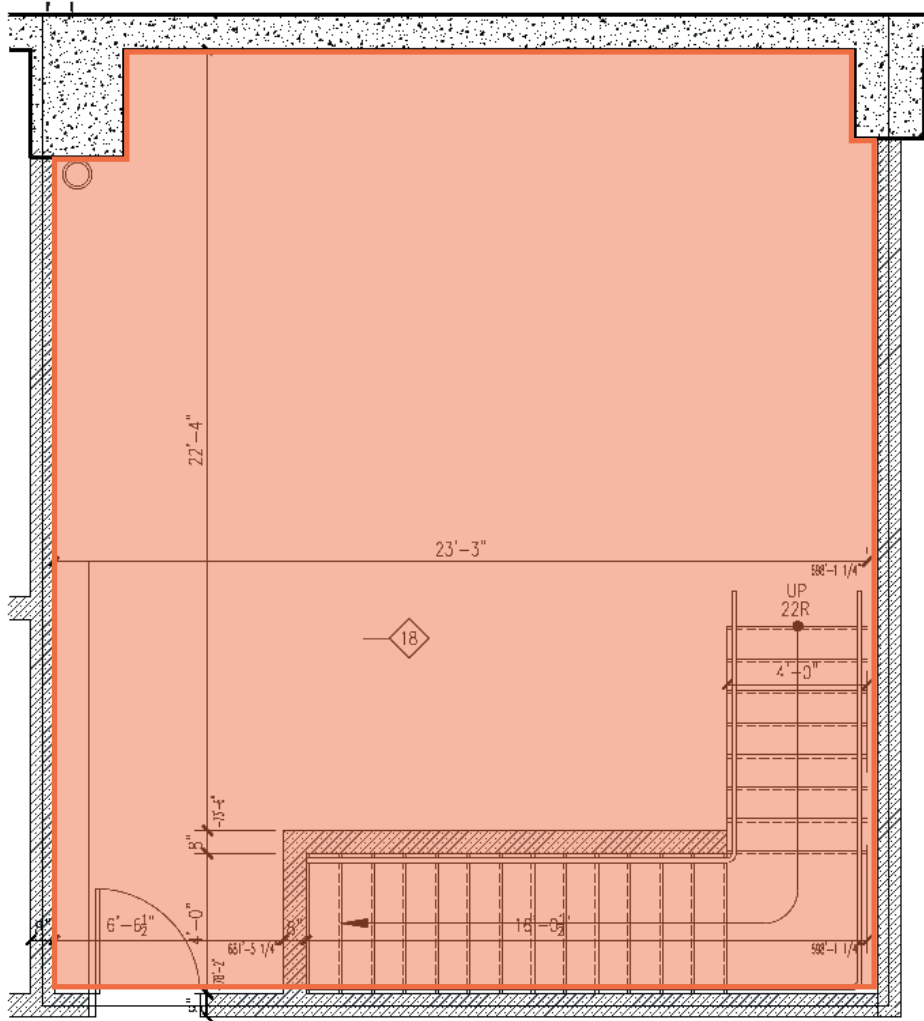
All information supplied in this marketing presentation and/or flyer is from sources deemed reliable and is furnished subject to errors, omissions, modifications, removal of listings from sale/lease and to any listing condition. Any square footage, dimensions, floor plans and/or technical data set forth are approximations and are subject to further elaboration/confirmation.



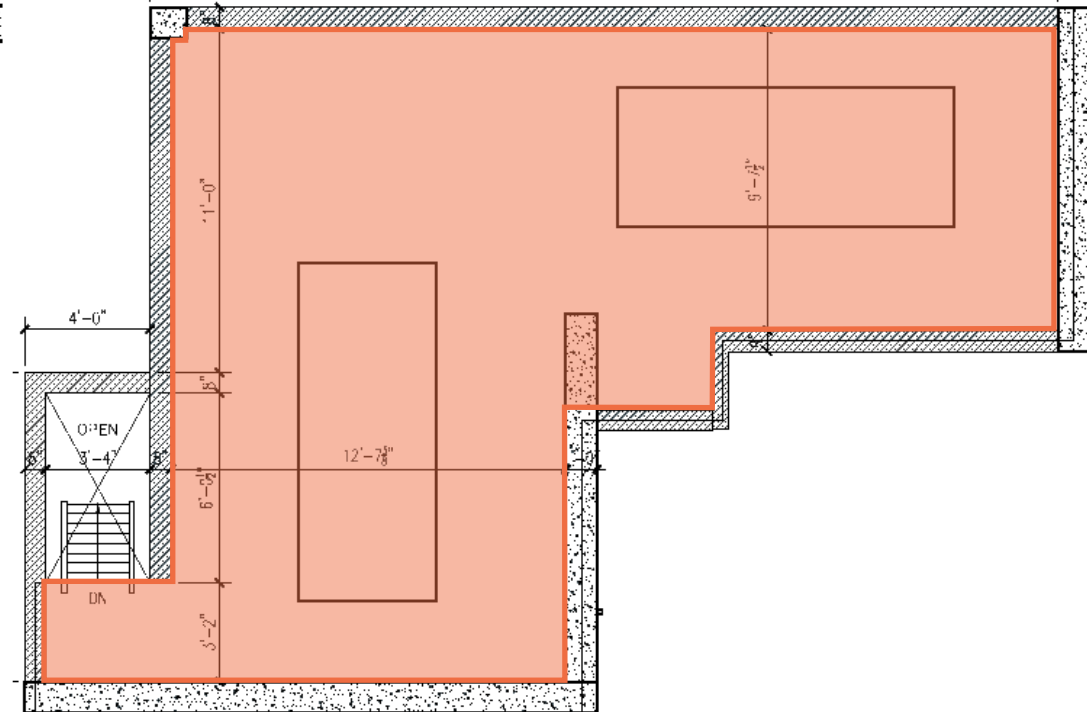
299 **THIRD AVENUE**
SOUTHEAST CORNER OF E 23RD ST
GRAMERCY

FLOOR PLANS:

BASEMENT - 686 SF



MEZZANINE - 505 SF



CONTACT OUR BROKERS FOR MORE INFORMATION

DAVID GREEN
DGreen@ksrny.com
516.320.0260

IKE BIBI
IBibi@ksrny.com
347.417.2860

All information supplied in this marketing presentation and/or flyer is from sources deemed reliable and is furnished subject to errors, omissions, modifications, removal of listings from sale/lease and to any listing condition. Any square footage, dimensions, floor plans and/or technical data set forth are approximations and are subject to further elaboration/confirmation.

