

TILDEN TERRACE

11056 WASHINGTON BOULEVARD
CULVER CITY, CA 90232

CULVER CITY MIXED USE GROUND FLOOR FOOD / RETAIL SPACE FOR LEASE



2021 DEMOGRAPHICS	1 MILE	2 MILE	3 MILE
Total Population	44,219	142,601	266,400
Employee Population	27,486	89,970	194,700
Avg Household Income	\$108,477	\$118,579	\$139,695

FOR MORE INFORMATION, PLEASE CONTACT:

DAVID C. LACHOFF

D & T Investment Company

CA RE Lic. #00322957

Corporate RE Lic. #01235959

KEVIN LACHOFF

Director

Newmark

t 310-407-6580 | kevin.lachoff@nmrk.com

CA RE Lic. #01481846

ASKING RENT

\$2.95/SF NNN

AVAILABLE SPACE

±1,600 SF

PROPERTY HIGHLIGHTS

Concrete floors, exposed ductwork, flexible layout

Retail, potential Fitness, Medical or Food Uses *

On-site customer parking

Good Daytime and Residential Demographics

Washington Blvd. corridor between 405 Freeway, Sony Pictures,
and Downtown Culver City

*Tenant to verify

1875 Century Park E | Suite 1380 | Los Angeles, CA 90067

Procuring broker shall only be entitled to a commission, calculated in accordance with the rates approved by our principal only if such procuring broker executes a brokerage agreement acceptable to us and our principal and the conditions as set forth in the brokerage agreement are fully and unconditionally satisfied. Although all information furnished regarding property for sale, rental, or financing is from sources deemed reliable, such information has not been verified and no express representation is made nor is any to be implied as to the accuracy thereof and it is submitted subject to errors, omissions, change of price, rental or other conditions, prior sale, lease or financing, or withdrawal without notice and to any special conditions imposed by our principal.

Corporate License #01355491

nmrk.com

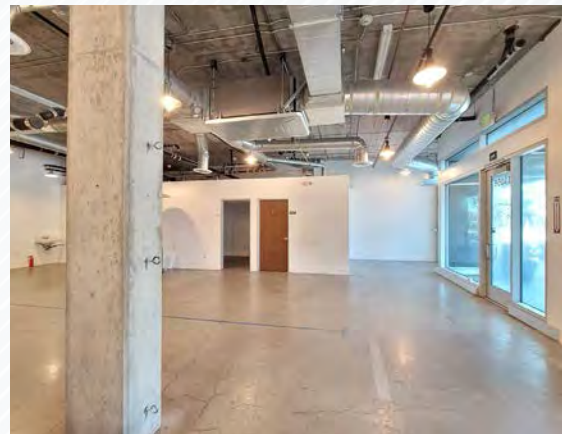
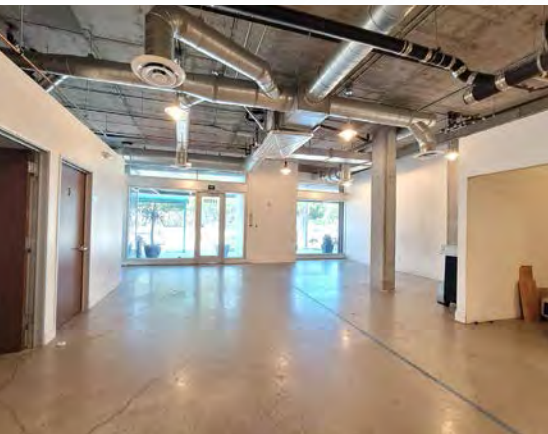
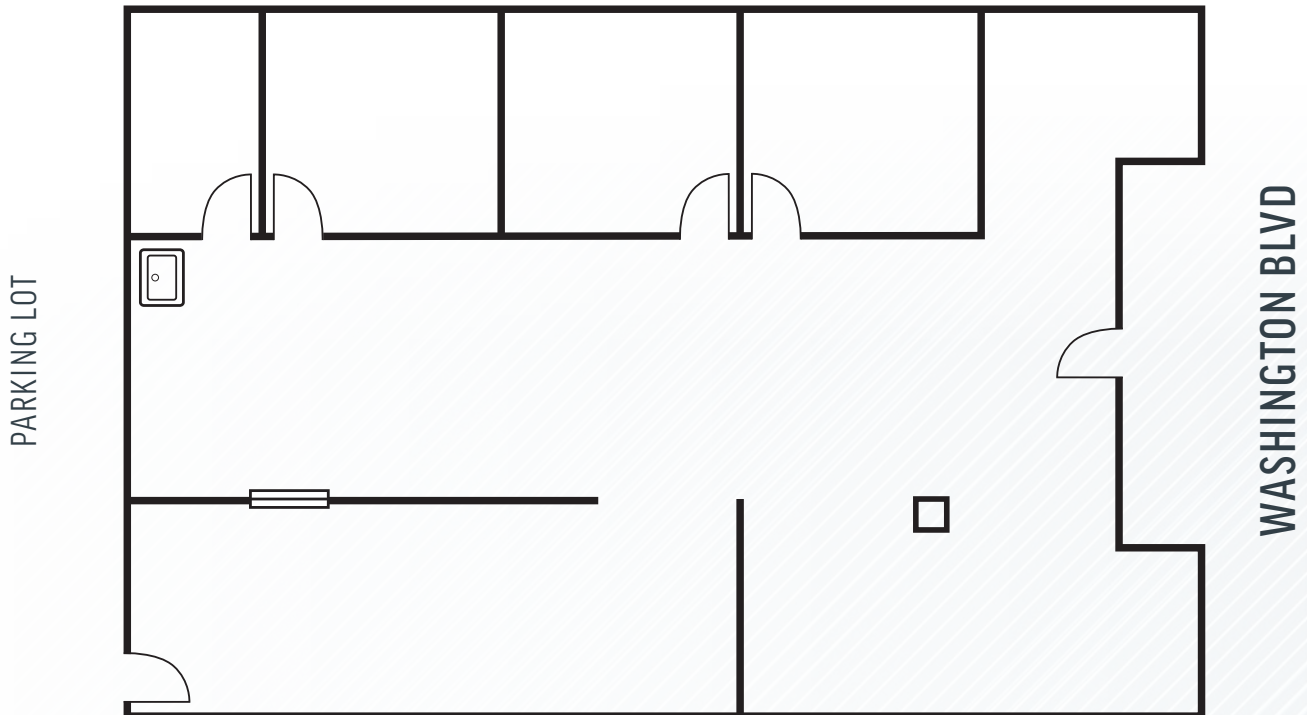
NEWMARK

TILDEN TERRACE

11056 WASHINGTON BOULEVARD
CULVER CITY, CA 90232

CULVER CITY MIXED USE GROUND FLOOR
FOOD / RETAIL SPACE FOR LEASE

FLOOR PLAN



FOR MORE INFORMATION, PLEASE CONTACT:

DAVID C. LACHOFF

D & T Investment Company

CA RE Lic. #00322957

Corporate RE Lic. #01235959

KEVIN LACHOFF

Director

Newmark

t 310-407-6580 | kevin.lachoff@nmrk.com

CA RE Lic. #01481846

NEWMARK

nmrk.com

TILDEN TERRACE

11056 WASHINGTON BOULEVARD
CULVER CITY, CA 90232

CULVER CITY MIXED USE GROUND FLOOR
FOOD / RETAIL SPACE FOR LEASE

SITE PLAN



FOR MORE INFORMATION, PLEASE CONTACT:

DAVID C. LACHOFF

D & T Investment Company

CA RE Lic. #00322957

Corporate RE Lic. #01235959

KEVIN LACHOFF

Director

Newmark

t 310-407-6580 | kevin.lachoff@nrmk.com

CA RE Lic. #01481846

NEWMARK

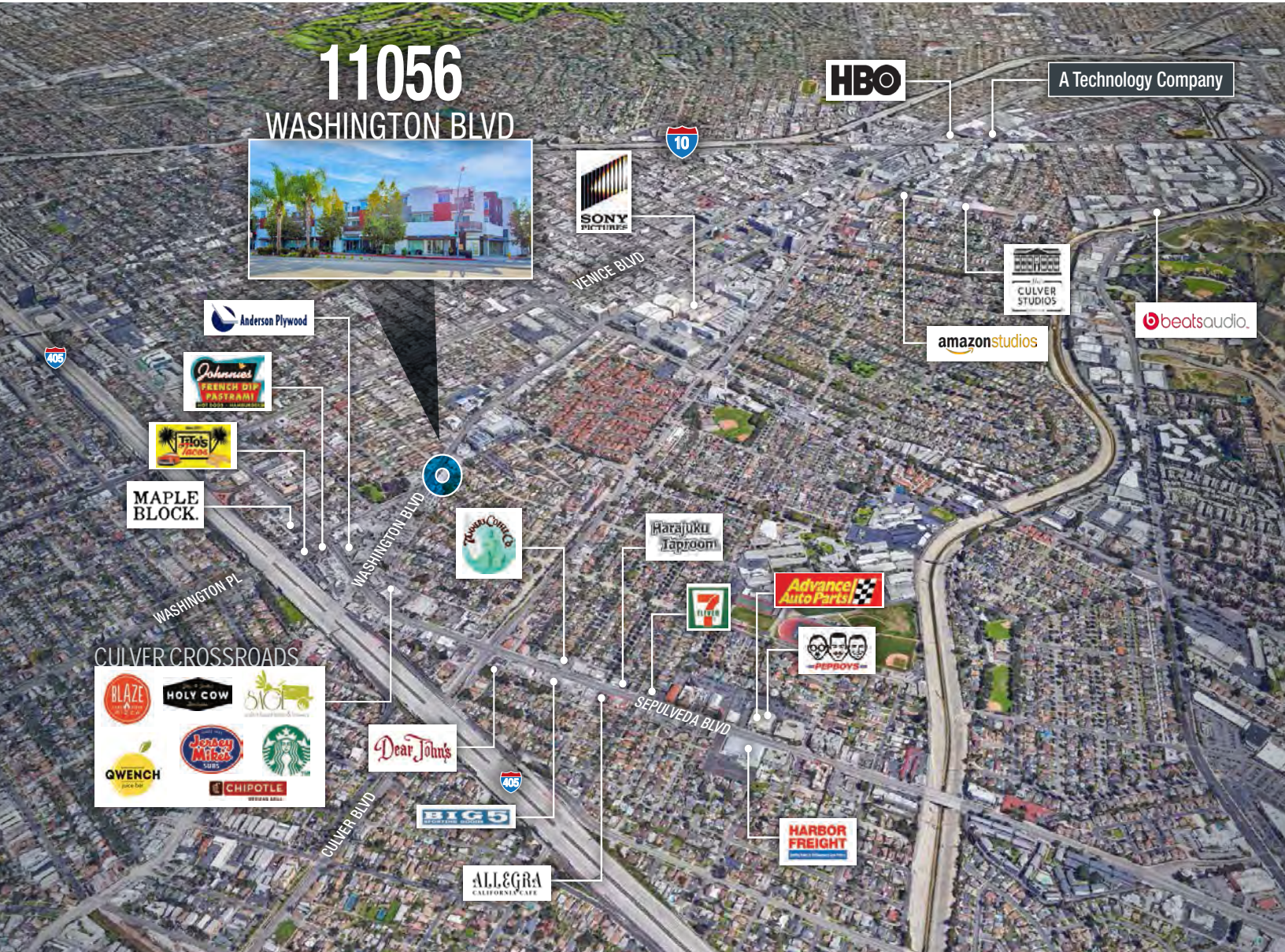
nrmk.com

TILDEN TERRACE

11056 WASHINGTON BOULEVARD
CULVER CITY, CA 90232

CULVER CITY MIXED USE GROUND FLOOR
FOOD / RETAIL SPACE FOR LEASE

AREA AMENITIES



FOR MORE INFORMATION, PLEASE CONTACT:

DAVID C. LACHOFF
D & T Investment Company
CA RE Lic. #00322957
Corporate RE Lic. #01235959

KEVIN LACHOFF
Director
Newmark

t 310-407-6580 | kevin.lachoff@nrmk.com
CA RE Lic. #01481846

NEWMARK

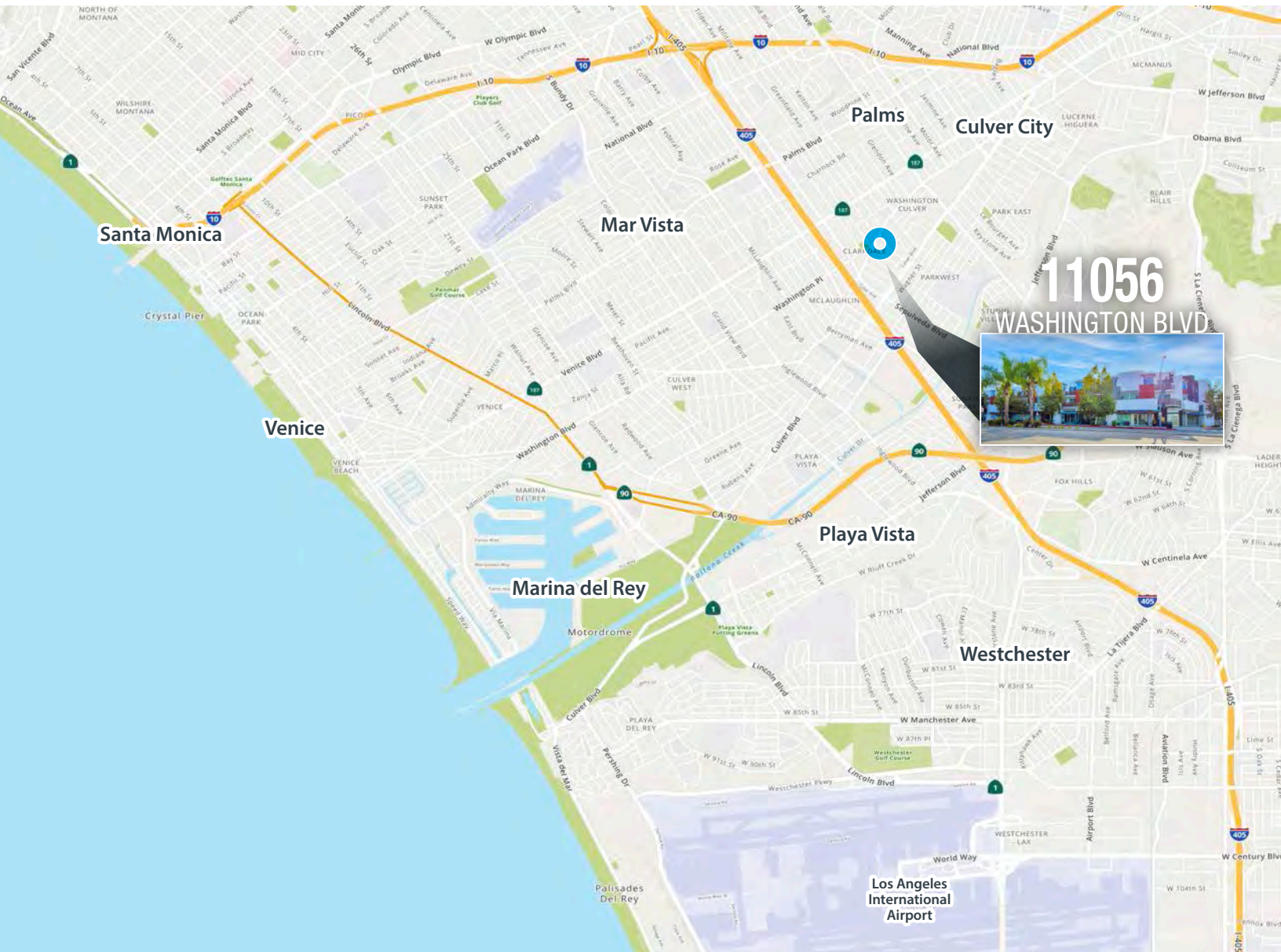
nrmk.com

TILDEN TERRACE

11056 WASHINGTON BOULEVARD
CULVER CITY, CA 90232

CULVER CITY MIXED USE GROUND FLOOR
FOOD / RETAIL SPACE FOR LEASE

REGIONAL MAP



FOR MORE INFORMATION, PLEASE CONTACT:

DAVID C. LACHOFF
D & T Investment Company
CA RE Lic. #00322957
Corporate RE Lic. #01235959

KEVIN LACHOFF
Director
Newmark

t 310-407-6580 | kevin.lachoff@nrmk.com
CA RE Lic. #01481846

NEWMARK

nrmk.com