

**376 UNION AVE, CORNER STOREFRONT WILLIAMSBURG L TRAIN. FOOD OR RETAIL**

**ASKING PRICE: \$12,000/month**



**For More Information, Please Contact:**

**DAVID SHAPIRO**

Lic. R.E. Broker

📞 917 818 4471

✉️ david@grandand.co

**BRYCE DAVID**

Lic. R.E. Agent

📞 978 201 9065

✉️ bryce@grandand.co

**GRAND & CO.**

🌐 www.grandand.co

📍 260 Ainslie St, 3rd Fl  
Brooklyn NY

**GRAND & CO.**



# EXECUTIVE SUMMARY

## Prime Turnkey Space for Lease - 376 Union Ave, Williamsburg

Seize the opportunity to establish your business in this highly desirable corner location at 376 Union Ave, just steps from the L train! Currently operating as an organic deli/corner store, this space is fully equipped for food service but also offers the flexibility to be transformed into a retail shop or other creative concept.

### Key Features:

- **1100 Sq ft of Prime Space:** Spacious and versatile layout, ideal for food service or retail operations
- **Kitchen-Ready Infrastructure:** Equipped with a grease trap, cooking hood, fire suppression system, and ample power to support a full-service kitchen or other high-power needs.
- **Flexible Use:** Perfect for a deli, café, restaurant, boutique, or retail shop.
- **Prime Visibility:** Located on a bustling corner with excellent foot and vehicle traffic.
- **Unbeatable Location:** Just steps from the L train, ensuring easy access for customers and staff alike.
- **Basement:** Full Size basement adding extra sq ft to the deal!

At \$12,000/month, this is an incredible opportunity to secure a versatile and turnkey space in Williamsburg, suitable for food service, retail, or any innovative concept you envision.

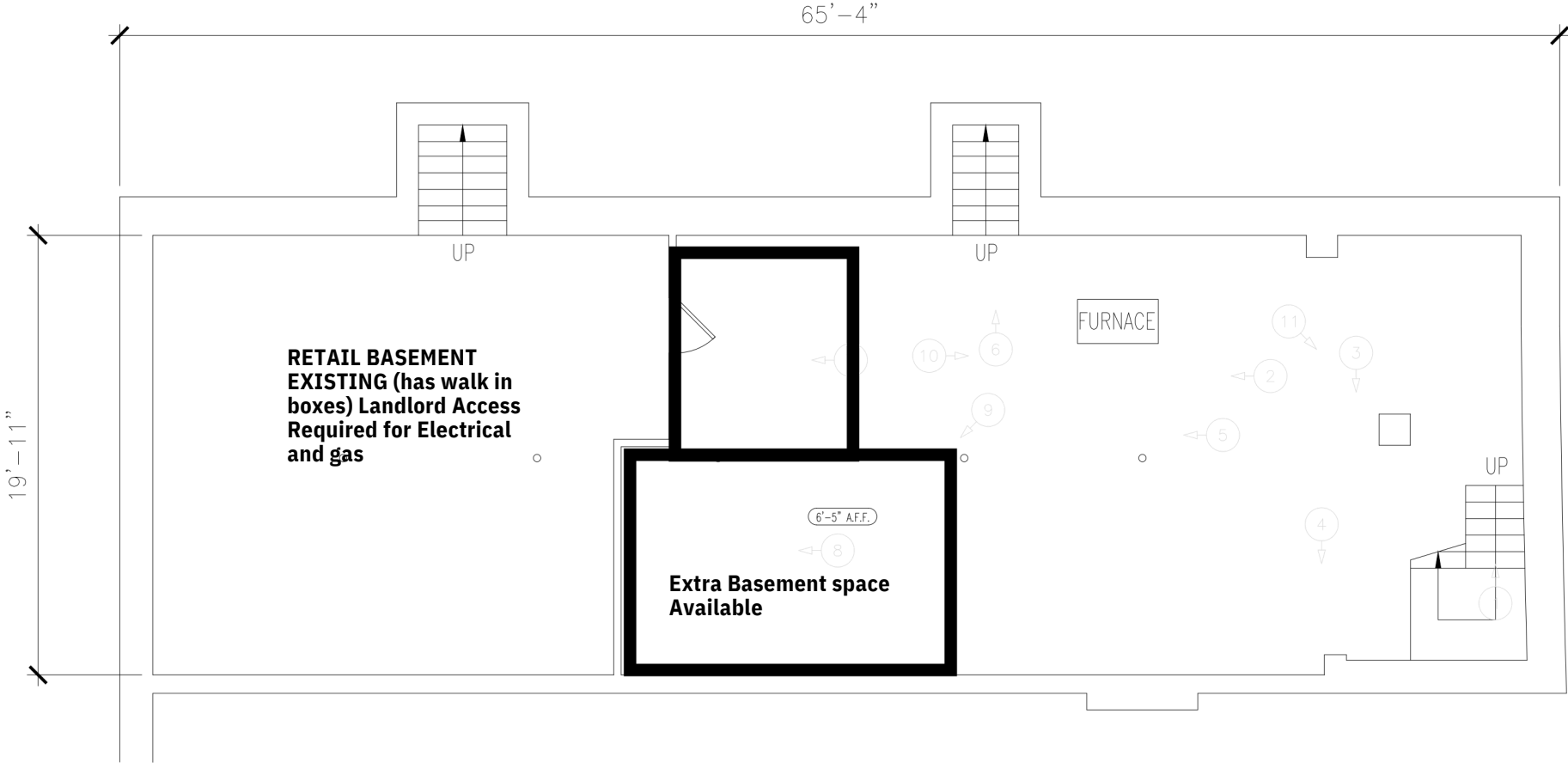
With its top-tier location, full kitchen infrastructure, and flexible layout, this space is ready to bring your vision to life. Schedule a tour today to see the potential for yourself!

## DEAL HIGHLIGHTS

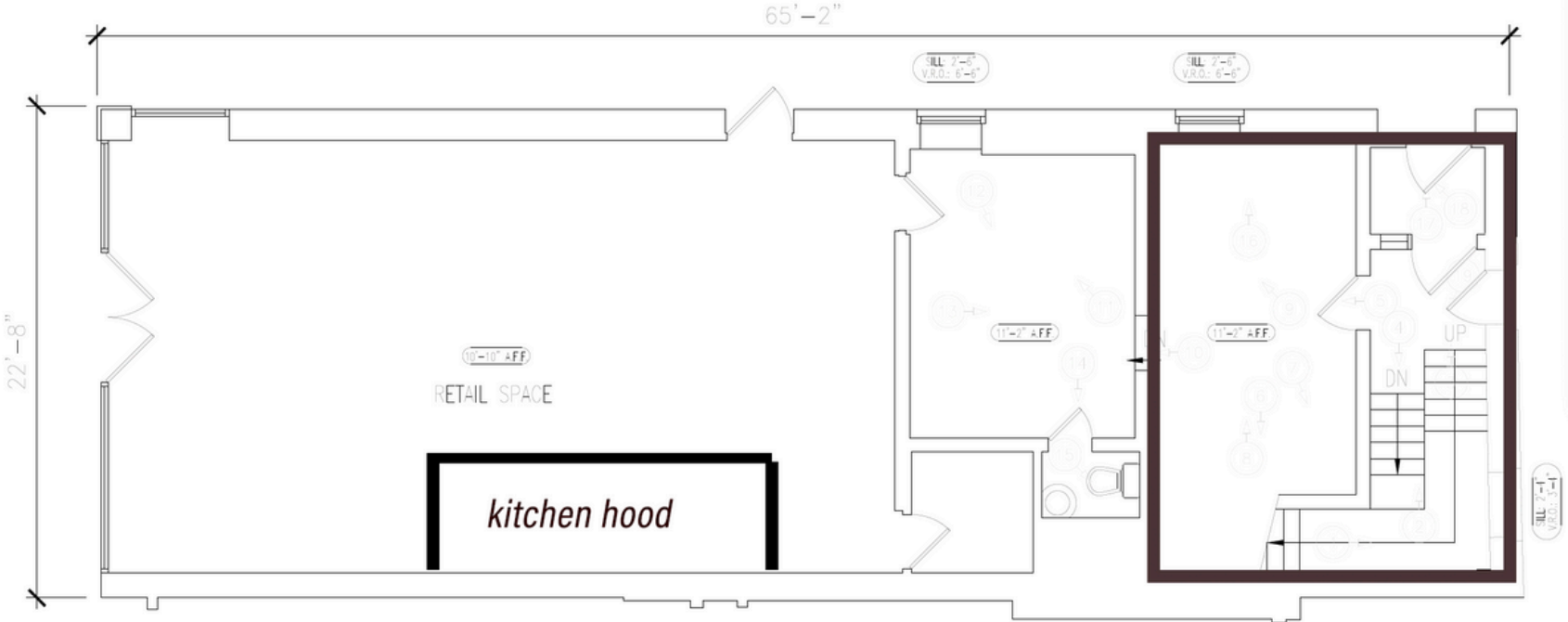
<b>Sq Ft:</b>	1100
<b>Price:</b>	\$12,000/month
<b>Lease:</b>	Long Term
<b>Assets:</b>	Hood & vent
<b>Misc:</b>	Basement



# FLOOR PLAN



# FLOOR PLAN



376 UNION AVE, CORNER STOREFRONT

WILLIAMSBURG L TRAIN

ASKING PRICE: \$12,000/month



www.grandand.co  
260 Ainslie St, 3rd Fl  
Brooklyn NY

**DAVID SHAPIRO**

Lic. R.E. Broker

☎ 917 818 4471

✉ david@grandand.co

**BRYCE DAVID**

Lic. R.E. Agent

☎ 978 201 9065

✉ bryce@grandand.co

