

Greenfield Business Center I

4111 E. VALLEY AUTO DR
Mesa, Arizona 85206

PROFESSIONAL OFFICE SPACE FOR LEASE



Tyson Breinholt
D: 480.966.7513
M: 602.315.7131
tbreinholt@cpiaz.com

Cliff Jenkins
D 480.634.2332
M 480.888.6017
cjenkins@cpiaz.com

Caleb Allen
D 480.621.3290
M 480.622.4174
callen@cpiaz.com



COMMERCIAL PROPERTIES INC.

Locally Owned. Globally Connected. CORFAC INTERNATIONAL

TEMPE: 2323 W University Drive, Tempe, AZ 85281 | 480.966.2301
SCOTTSDALE: 8767 E Via de Commercio, Suite 101, Scottsdale, AZ 85258 | www.cpiaz.com

The information contained herein has been obtained from various sources. We have no reason to doubt its accuracy; however, J & J Commercial Properties, Inc. has not verified such information and makes no guarantee, warranty or representation about such information. The prospective buyer or lessee should independently verify all dimensions, specifications, floor plans, and all information prior to the lease or purchase of the property. All offerings are subject to prior sale, lease, or withdrawal from the market without prior notice.

01 07 26

Greenfield Business Center I

4111 E. VALLEY AUTO DR
Mesa, Arizona 85206

AVAILABLE FOR LEASE

SUITE 202: ±2,734 SF
\$19.25 PSF/Yr (F/S NET of Janitorial)

PROPERTY DETAILS

- ±62,032 SF Professional Office Project
- 1999 Construction
- Zoning: M-1, City of Mesa
- Crossroads: Greenfield & Baseline Rd
- Frontage on Baseline Rd
- Covered Parking Available
- 4.7:1,000 Parking Ratio
- Monument Signage Available
- Professionally Maintained Grounds



Tyson Breinholt
D: 480.966.7513
M: 602.315.7131
tbreinholt@cpiaz.com

Cliff Jenkins
D 480.634.2332
M 480.888.6017
cjenkins@cpiaz.com

Caleb Allen
D 480.621.3290
M 480.622.4174
callen@cpiaz.com



COMMERCIAL PROPERTIES INC.

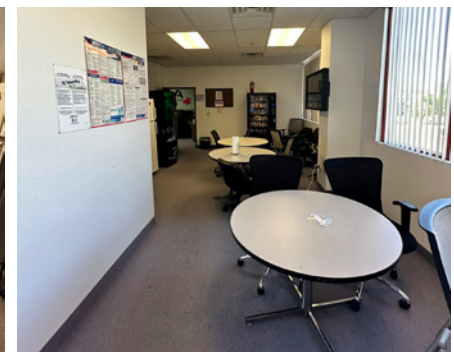
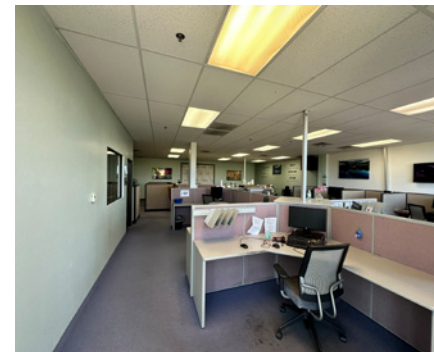
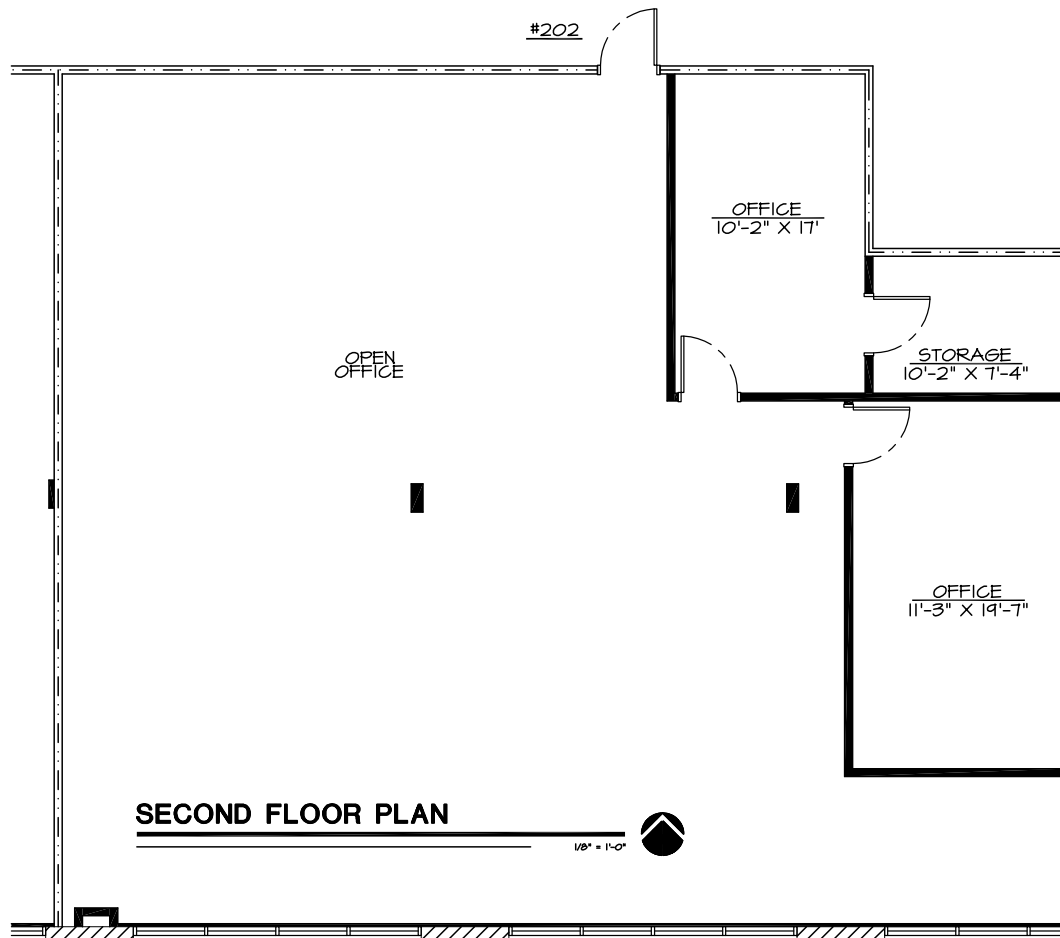
Locally Owned. Globally Connected. CORFAC INTERNATIONAL

TEMPE: 2323 W University Drive, Tempe, AZ 85281 | 480.966.2301
SCOTTSDALE: 8767 E Via de Commercio, Suite 101, Scottsdale, AZ 85258 | www.cpiaz.com

Greenfield Business Center I

4111 E. VALLEY AUTO DR
Mesa, Arizona 85206

Suite 202: ±2,734 SF



Tyson Breinholt
D: 480.966.7513
M: 602.315.7131
tbreinholt@cpi.az.com

Cliff Jenkins
D 480.634.2332
M 480.888.6017
cjenkins@cpi.az.com

Caleb Allen
D 480.621.3290
M 480.622.4174
callen@cpi.az.com

 **COMMERCIAL PROPERTIES INC.**
Locally Owned. Globally Connected. CORFAC INTERNATIONAL

TEMPE: 2323 W University Drive, Tempe, AZ 85281 | 480.966.2301
SCOTTSDALE: 8767 E Via de Commercio, Suite 101, Scottsdale, AZ 85258 | www.cpi.az.com

The information contained herein has been obtained from various sources. We have no reason to doubt its accuracy; however, J & J Commercial Properties, Inc. has not verified such information and makes no guarantee, warranty or representation about such information. The prospective buyer or lessee should independently verify all dimensions, specifications, floor plans, and all information prior to the lease or purchase of the property. All offerings are subject to prior sale, lease, or withdrawal from the market without prior notice.

01.07.26

Greenfield Business Center I

4111 E. VALLEY AUTO DR
Mesa, Arizona 85206



Tyson Breinholt
D: 480.966.7513
M: 602.315.7131
tbreinholt@cpiaz.com

Cliff Jenkins
D 480.634.2332
M 480.888.6017
cjenkins@cpiaz.com

Caleb Allen
D 480.621.3290
M 480.622.4174
callen@cpiaz.com



COMMERCIAL PROPERTIES INC.

Locally Owned. Globally Connected. CORFAC INTERNATIONAL

TEMPE: 2323 W University Drive, Tempe, AZ 85281 | 480.966.2301
SCOTTSDALE: 8767 E Via de Commercio, Suite 101, Scottsdale, AZ 85258 | www.cpi.az.com

The information contained herein has been obtained from various sources. We have no reason to doubt its accuracy; however, J & J Commercial Properties, Inc. has not verified such information and makes no guarantee, warranty or representation about such information. The prospective buyer or lessee should independently verify all dimensions, specifications, floor plans, and all information prior to the lease or purchase of the property. All offerings are subject to prior sale, lease, or withdrawal from the market without prior notice.

01 07 26