

17 Monmouth Street | Somerville, MA 02143

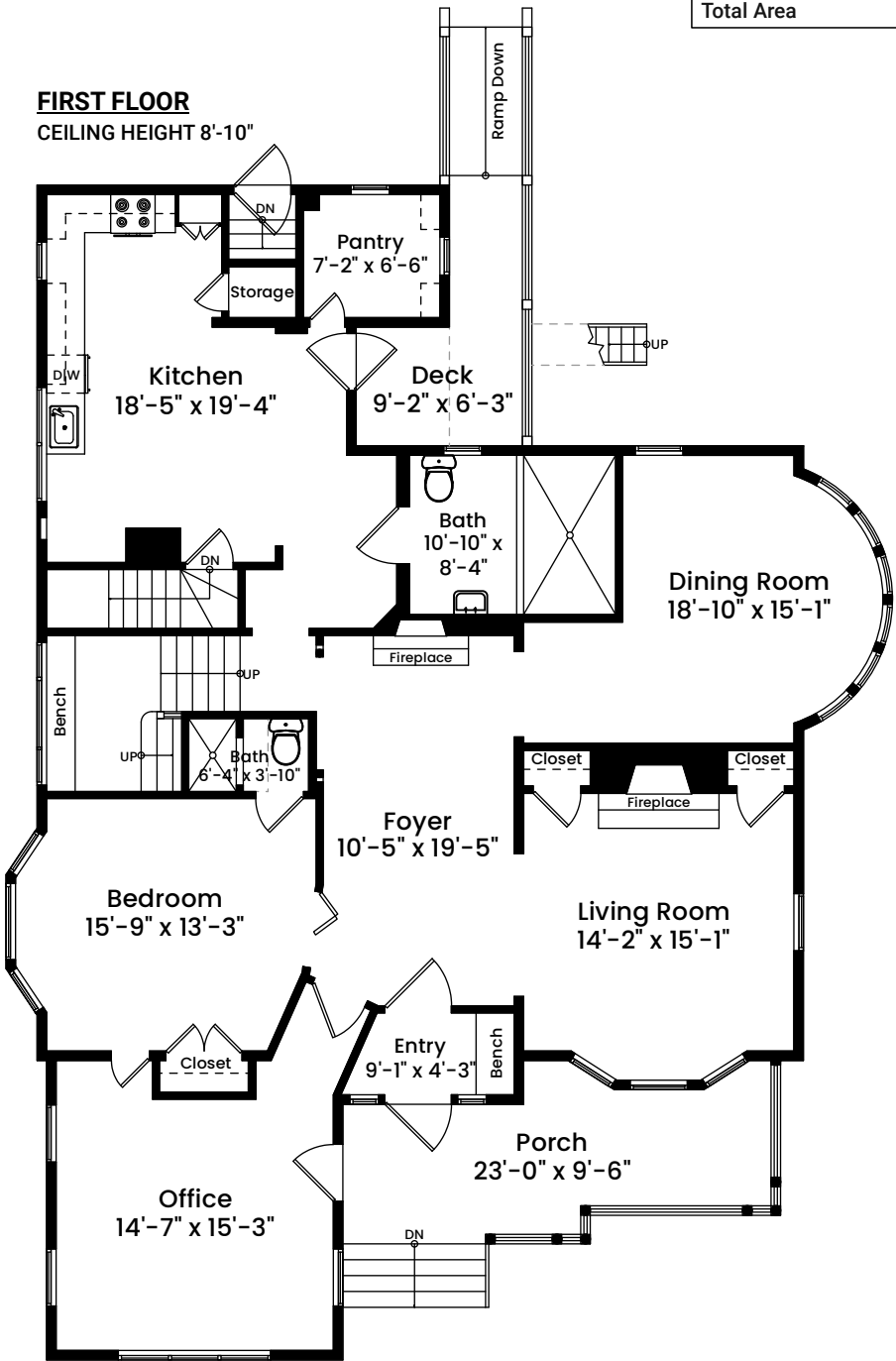
AREA CALCULATIONS

First Floor	1,903 SF
Second Floor	1,621 SF
Third Floor	1,084 SF
Total Gross Living Area	4,608 SF

Basement	1,510 SF
Third Floor Area Below 5'	227 SF
Total Area	6,345 SF

FIRST FLOOR

CEILING HEIGHT 8'-10"



1 1 2 4 8
Scale 1 inch = 10 feet

Architecturally drafted in August 2025 by:
National Floor Plans (800) 328-0217
Associate Member | American Institute of Architects
Contact www.nationalfloorplans.com for .dwg AutoCAD files
or square footage questions about this property.

Dimensions are not guaranteed and are provided for informational purposes only.
Individual room dimensions are not used to calculate overall square footage.
National Floor Plans follows ANSI guidelines for calculating square footage.

17 Monmouth Street | Somerville, MA 02143

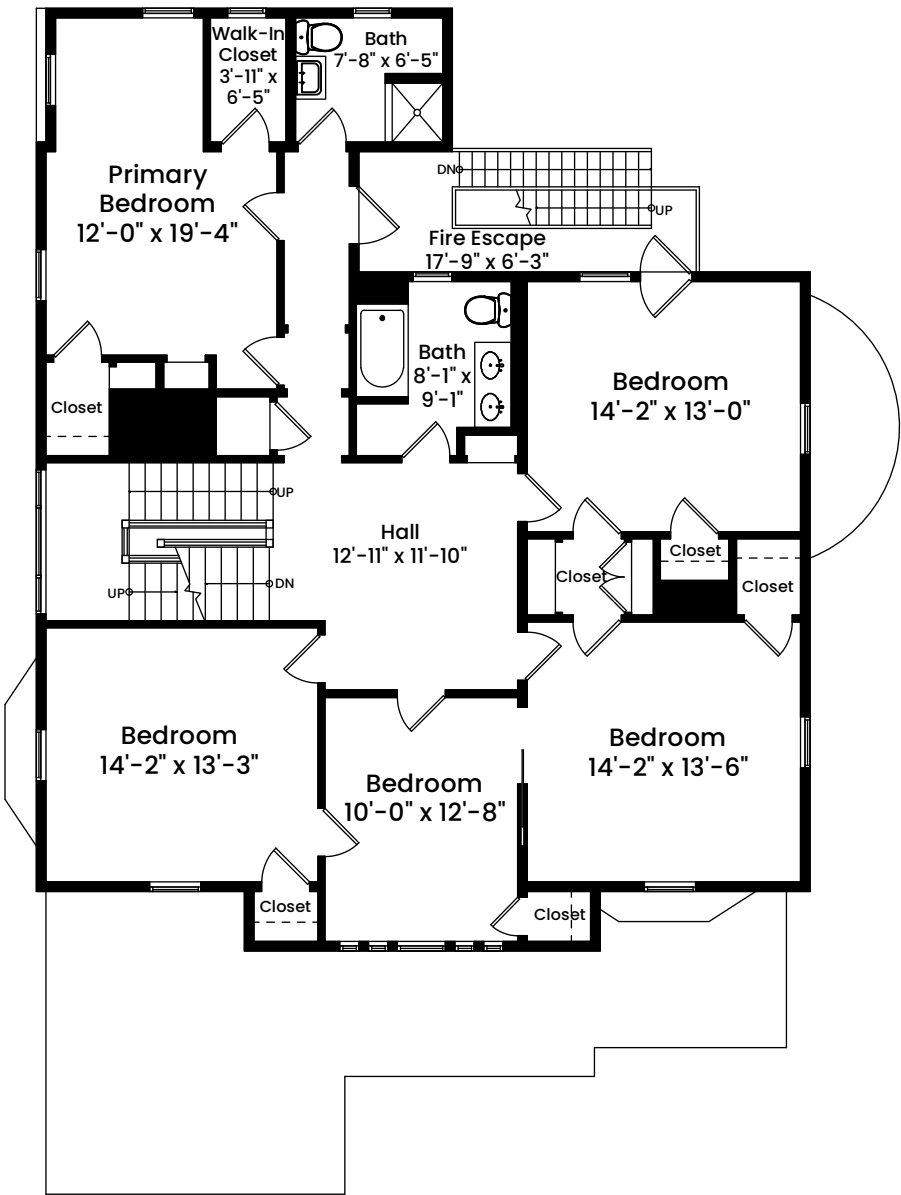
AREA CALCULATIONS

First Floor	1,903 SF
Second Floor	1,621 SF
Third Floor	1,084 SF
Total Gross Living Area	4,608 SF

Basement	1,510 SF
Third Floor Area Below 5'	227 SF
Total Area	6,345 SF

SECOND FLOOR

CEILING HEIGHT 8'-5"



Architecturally drafted in August 2025 by:
National Floor Plans (800) 328-0217
Associate Member | American Institute of Architects
Contact www.nationalfloorplans.com for .dwg AutoCAD files
or square footage questions about this property.



1 1 2 4 8
Scale 1 inch = 10 feet

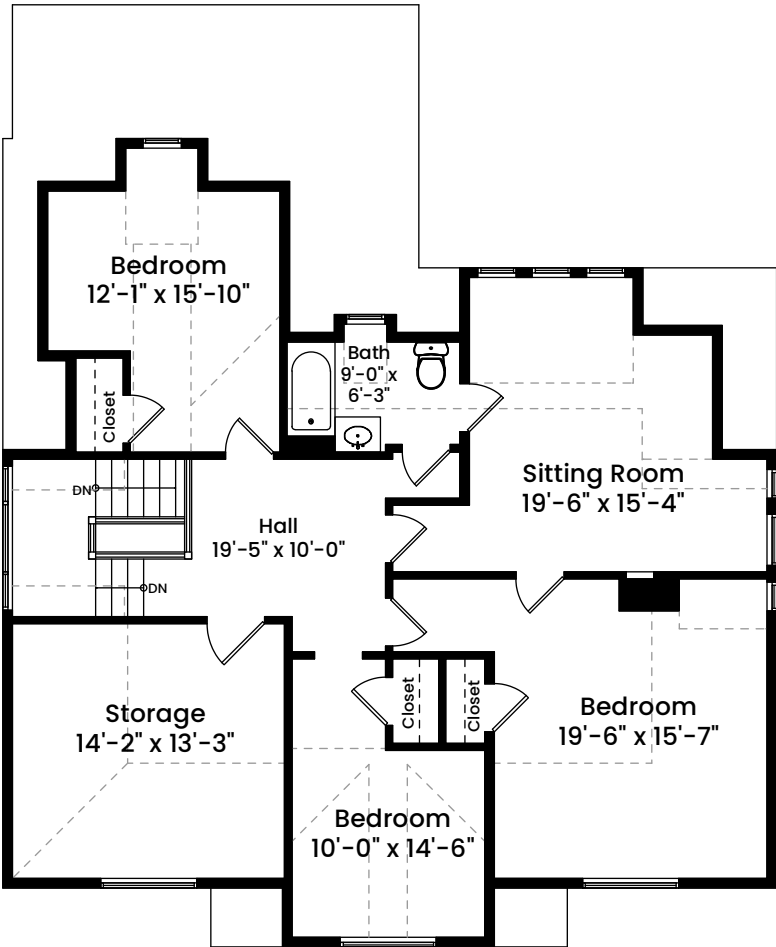
Dimensions are not guaranteed and are provided for informational purposes only.
Individual room dimensions are not used to calculate overall square footage.
National Floor Plans follows ANSI guidelines for calculating square footage.

17 Monmouth Street | Somerville, MA 02143

AREA CALCULATIONS	
First Floor	1,903 SF
Second Floor	1,621 SF
Third Floor	1,084 SF
Total Gross Living Area	4,608 SF
Basement	1,510 SF
Third Floor Area Below 5'	227 SF
Total Area	6,345 SF

THIRD FLOOR

CEILING HEIGHT 7'-8"



Architecturally drafted in August 2025 by:
National Floor Plans (800) 328-0217
Associate Member | American Institute of Architects
Contact www.nationalfloorplans.com for .dwg AutoCAD files
or square footage questions about this property.



1 1 2 4 8
Scale 1 inch = 10 feet

Dimensions are not guaranteed and are provided for informational purposes only.
Individual room dimensions are not used to calculate overall square footage.
National Floor Plans follows ANSI guidelines for calculating square footage.

17 Monmouth Street | Somerville, MA 02143

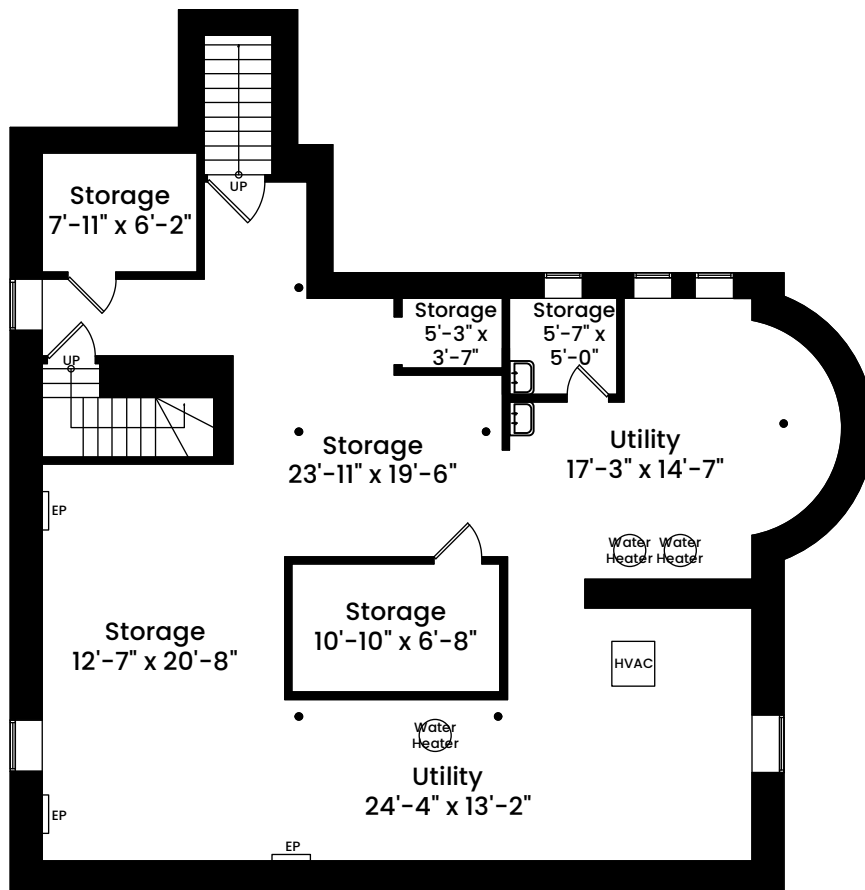
AREA CALCULATIONS

First Floor	1,903 SF
Second Floor	1,621 SF
Third Floor	1,084 SF
Total Gross Living Area	4,608 SF

Basement	1,510 SF
Third Floor Area Below 5'	227 SF
Total Area	6,345 SF

BASEMENT

CEILING HEIGHT 7'-11"



Architecturally drafted in August 2025 by:
National Floor Plans (800) 328-0217
Associate Member | American Institute of Architects
Contact www.nationalfloorplans.com for .dwg AutoCAD files
or square footage questions about this property.



1 1 2 4 8
Scale 1 inch = 10 feet

Dimensions are not guaranteed and are provided for informational purposes only.
Individual room dimensions are not used to calculate overall square footage.
National Floor Plans follows ANSI guidelines for calculating square footage.