

# 1775 MORIAH WOODS BLVD

Memphis, TN 38117



## FOR SUBLEASE



## OFFICE SPACE FOR SUBLEASE

+/-4,035 SF Available

### Property Highlights

- +/-4,035 SF
- Lease term expires July 31, 2026 or July 31, 2029
- Parking ratio: 4:1,000 usf



**Matt Weathersby, SIOR, CCIM**  
Principal  
901 362 43173  
mweathersby@commadv.com

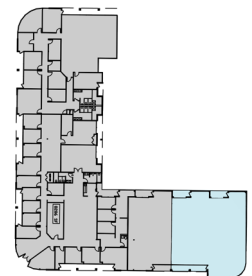
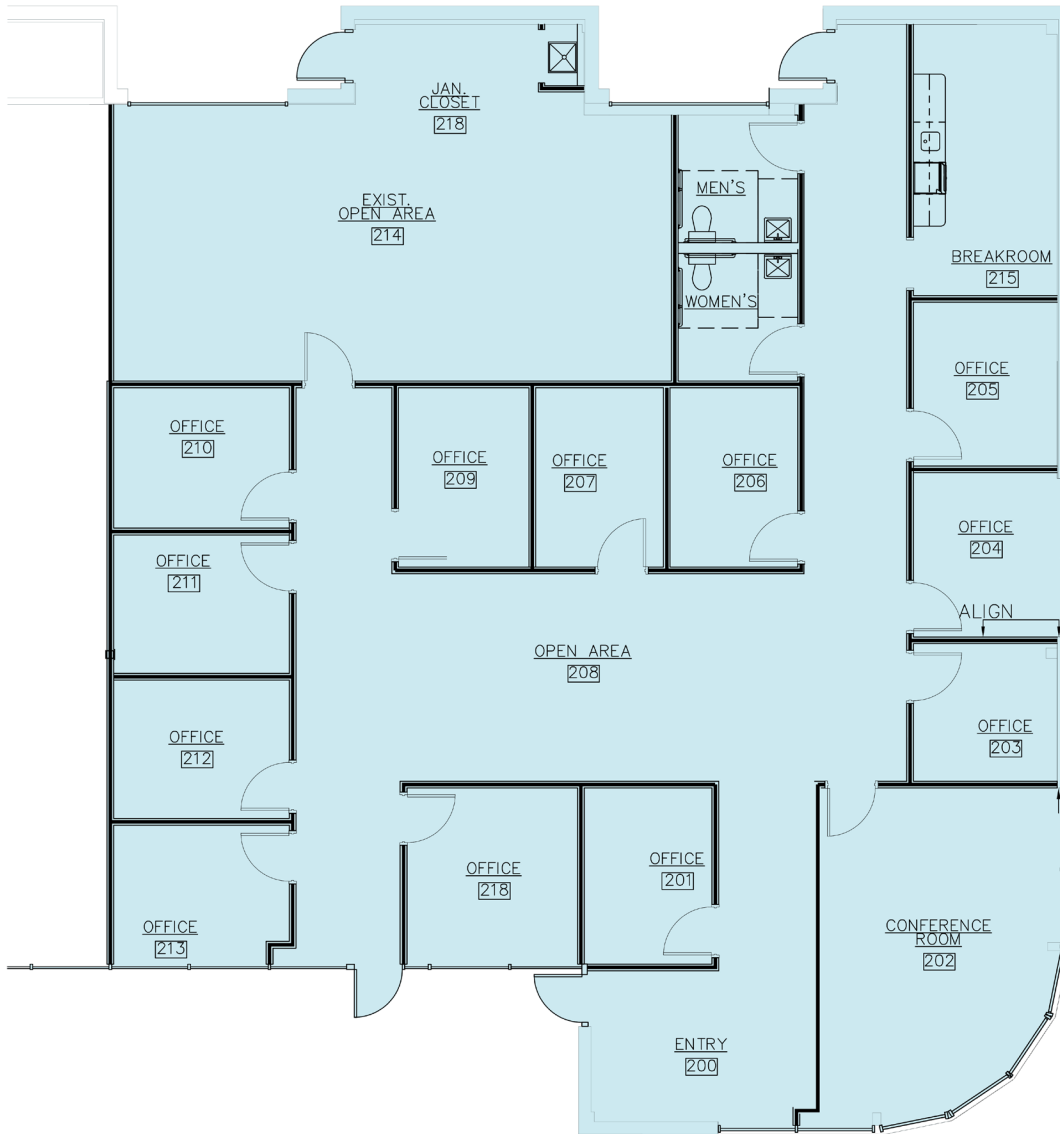
**Luke Jensen, SIOR**  
Associate Vice President  
901 362 4313  
luke.jensen@commadv.com

5101 Wheelis Drive  
Suite 300  
Memphis, TN 38117  
Main: 901 366 6070  
[www.commadv.com](http://www.commadv.com)

*Independently Owned and Operated / A Member of the Cushman & Wakefield Alliance*

Cushman & Wakefield Copyright 08/05/22. No warranty or representation, express or implied, is made to the accuracy or completeness of the information contained herein, and same is submitted subject to errors, omissions, change of price, rental or other conditions, withdrawal without notice, and to any special listing conditions imposed by the property owner(s). As applicable, we make no representation as to the condition of the property (or properties) in question.

# PROPOSED FLOOR PLAN



**Matt Weathersby, SIOR, CCIM**  
Principal  
901 362 43173  
mweathersby@commadv.com

**Luke Jensen, SIOR**  
Associate Vice President  
901 362 4313  
luke.jensen@commadv.com

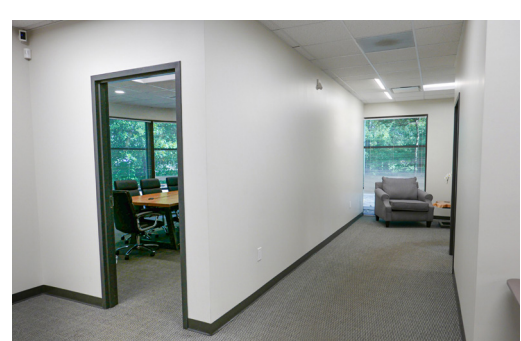
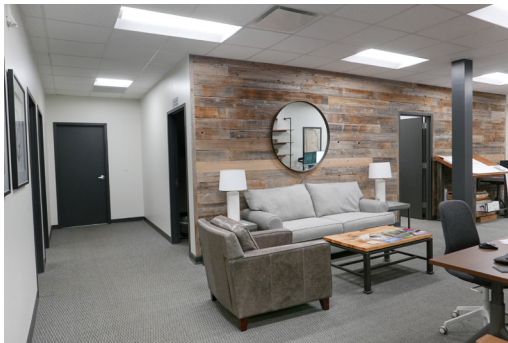
5101 Wheelis Drive  
Suite 300  
Memphis, TN 38117  
Main: 901 366 6070  
[www.commadv.com](http://www.commadv.com)

*Independently Owned and Operated / A Member of the Cushman & Wakefield Alliance*

Cushman & Wakefield Copyright 08/05/22. No warranty or representation, express or implied, is made to the accuracy or completeness of the information contained herein, and same is submitted subject to errors, omissions, change of price, rental or other conditions, withdrawal without notice, and to any special listing conditions imposed by the property owner(s). As applicable, we make no representation as to the condition of the property (or properties) in question.



PROPERTY PHOTOS



**Matt Weathersby, SIOR, CCIM**  
Principal  
901 362 43173  
mweathersby@commadv.com

**Luke Jensen, SIOR**  
Associate Vice President  
901 362 4313  
luke.jensen@commadv.com

5101 Wheelis Drive  
Suite 300  
Memphis, TN 38117  
Main: 901 366 6070  
[www.commadv.com](http://www.commadv.com)

*Independently Owned and Operated / A Member of the Cushman & Wakefield Alliance*

Cushman & Wakefield Copyright 08/05/22. No warranty or representation, express or implied, is made to the accuracy or completeness of the information contained herein, and same is submitted subject to errors, omissions, change of price, rental or other conditions, withdrawal without notice, and to any special listing conditions imposed by the property owner(s). As applicable, we make no representation as to the condition of the property (or properties) in question.



CUSHMAN &  
WAKEFIELD



COMMERCIAL  
ADVISORS

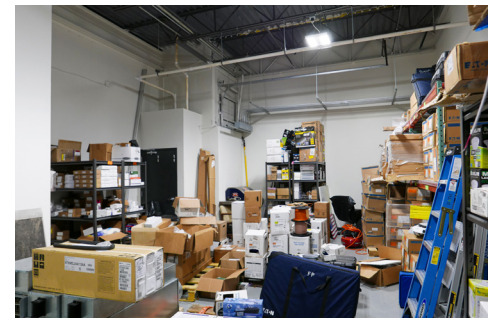
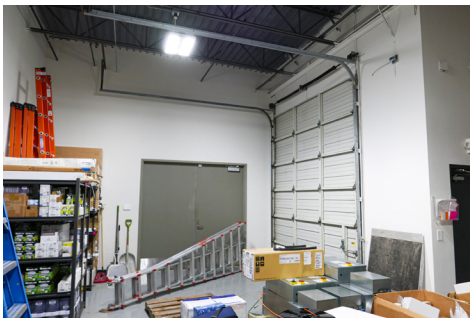
OFFICE SPACE AVIALABLE

1775 Moriah Woods Blvd

Memphis, TN 38117

FOR SUBLEASE

## PROPERTY PHOTOS



**Matt Weathersby, SIOR, CCIM**  
Principal  
901 362 43173  
mweathersby@commadv.com

**Luke Jensen, SIOR**  
Associate Vice President  
901 362 4313  
luke.jensen@commadv.com

5101 Wheelis Drive  
Suite 300  
Memphis, TN 38117  
Main: 901 366 6070  
[www.commadv.com](http://www.commadv.com)

*Independently Owned and Operated / A Member of the Cushman & Wakefield Alliance*

Cushman & Wakefield Copyright 08/05/22. No warranty or representation, express or implied, is made to the accuracy or completeness of the information contained herein, and same is submitted subject to errors, omissions, change of price, rental or other conditions, withdrawal without notice, and to any special listing conditions imposed by the property owner(s). As applicable, we make no representation as to the condition of the property (or properties) in question.