

FOR LEASE/SALE
FORMER JR'S RESTAURANT
111 W CHICAGO BLVD, TECUMSEH, MI



PROPERTY DETAILS

CONTACT BROKER

CONTACT BROKER

SALES PRICE

RENT

LOCATION:	111 W Chicago Blvd, Tecumseh, MI 49256
PROPERTY TYPE:	Restaurant
DATE AVAILABLE:	Immediately
SALES PRICE:	Contact Broker
RENT:	Contact Broker
NNN/EXPENSES:	TBD
PROPERTY TAXES:	\$11,797.29 (2023 Actual)
BUILDING SIZE:	3,120 SF
LOT SIZE:	0.0981 AC
AVAILABLE SPACE:	3,120 SF
ZONING:	HS (Highway Service District)
IMPROVEMENTS:	Fully Built Out Restaurant
TRAFFIC COUNT:	W Chicago Blvd (10,085 CPD)

EXCLUSIVELY LISTED BY:



GORDON S. HYDE
Director
ghyde@landmarkcres.com
248 488 2620



ANTHONY J. VITALE
Director
avitale@landmarkcres.com
248 488 2620

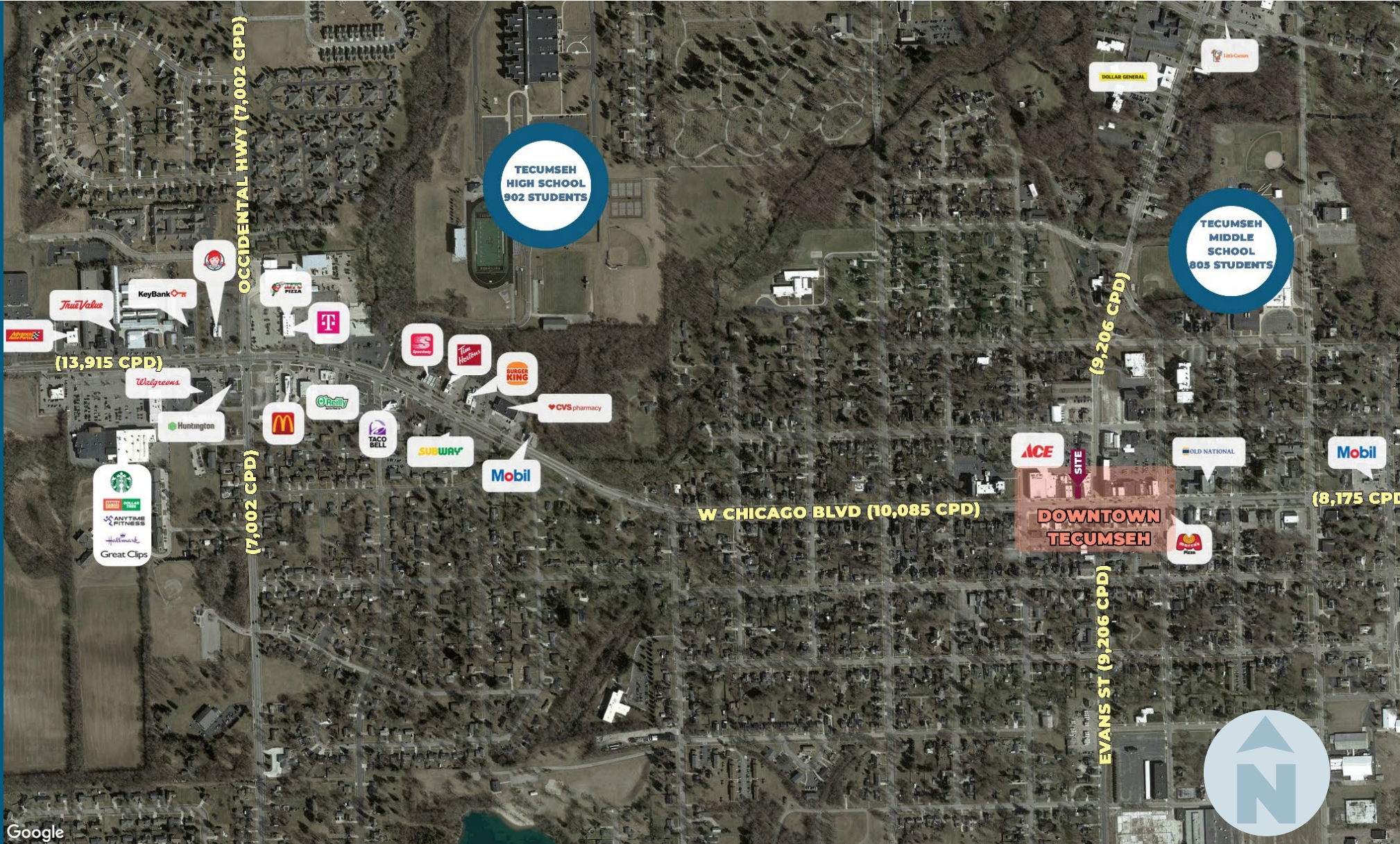
HIGHLIGHTS

- 3 Story Building located in downtown Tecumseh.
- 3,120 SF Bar & Restaurant on the lower level.
- Turn-key Restaurant & Bar.
- Public Parking area in the rear of the site.

MICRO AERIAL

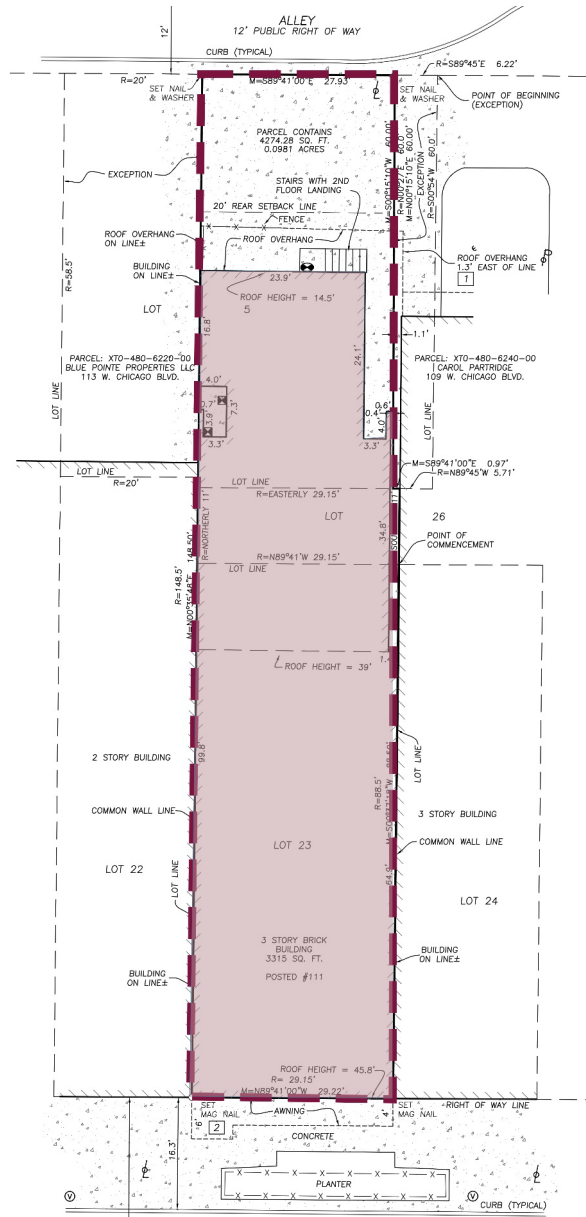


MACRO AERIAL

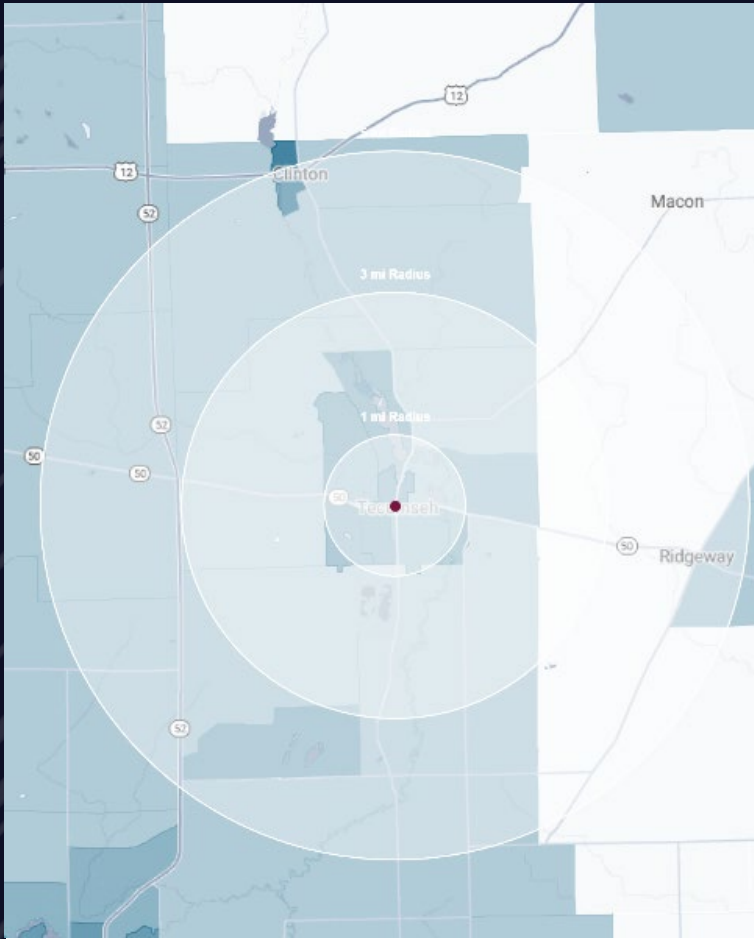


Google

SURVEY



DEMOGRAPHICS



FORMER JR'S RESTAURANT

111 W Chicago Blvd, Tecumseh, MI 49256

DEMOGRAPHICS

POPULATION

	1 MILE	3 MILE	5 MILE
2023 Estimated Population	5,167	12,577	20,130
2028 Projected Population	4,311	11,554	19,400
2020 Census Population	5,556	13,359	21,211
2010 Census Population	5,559	13,146	20,663
Projected Annual Growth 2023 to 2028	-3.3%	-1.6%	-0.7%
Historical Annual Growth 2010 to 2023	-0.5%	-0.3%	-0.2%

HOUSEHOLDS

2023 Estimated Households	2,194	5,332	8,417
2028 Projected Households	1,844	4,940	8,176
2020 Census Households	2,479	5,598	8,599
2010 Census Households	2,361	5,300	8,082
Projected Annual Growth 2023 to 2028	-3.2%	-1.5%	-0.6%
Historical Annual Growth 2010 to 2023	-0.5%	-	0.3%

RACE

2023 Est. White	92.6%	92.7%	92.8%
2023 Est. Black	0.8%	0.9%	0.8%
2023 Est. Asian or Pacific Islander	0.7%	0.7%	0.6%
2023 Est. American Indian or Alaska Native	0.3%	0.3%	0.3%
2023 Est. Other Races	5.7%	5.4%	5.5%

INCOME

2023 Est. Average Household Income	\$106,771	\$108,246	\$102,002
2023 Est. Median Household Income	\$67,307	\$77,460	\$78,333
2023 Est. Per Capita Income	\$45,378	\$46,023	\$42,745

BUSINESS

2023 Est. Total Businesses	291	431	614
2023 Est. Total Employees	2,791	3,913	5,994

CONTACT US



**GORDON S.
HYDE**

Director

ghyde@landmarkcres.com
248 488 2620



**ANTHONY J.
VITALE**

Director

avitale@landmarkcres.com
248 488 2620

LANDMARK
COMMERCIAL ▲ REAL ESTATE ▲ SERVICES

30500 Northwestern Hwy, Suite 200
Farmington Hills, MI 48334
248.488.2620
landmarkcres.com

LANDMARK COMMERCIAL REAL ESTATE SERVICES – Licensed Real Estate Brokers. The information above has been obtained from sources believed reliable. While we do not doubt its accuracy, we have not verified it and make no guarantee, warranty or representation about it. It is your responsibility to independently confirm its accuracy and completeness. Any projections, opinions, assumptions or estimates are used for example only and do not represent the current or future performance of the property. The value of this transaction to you depends on tax and other factors which should be evaluated by your tax, financial and legal advisors. You and your advisors should conduct a careful, independent investigation of the property to determine to your satisfaction, the suitability of the property for your needs.