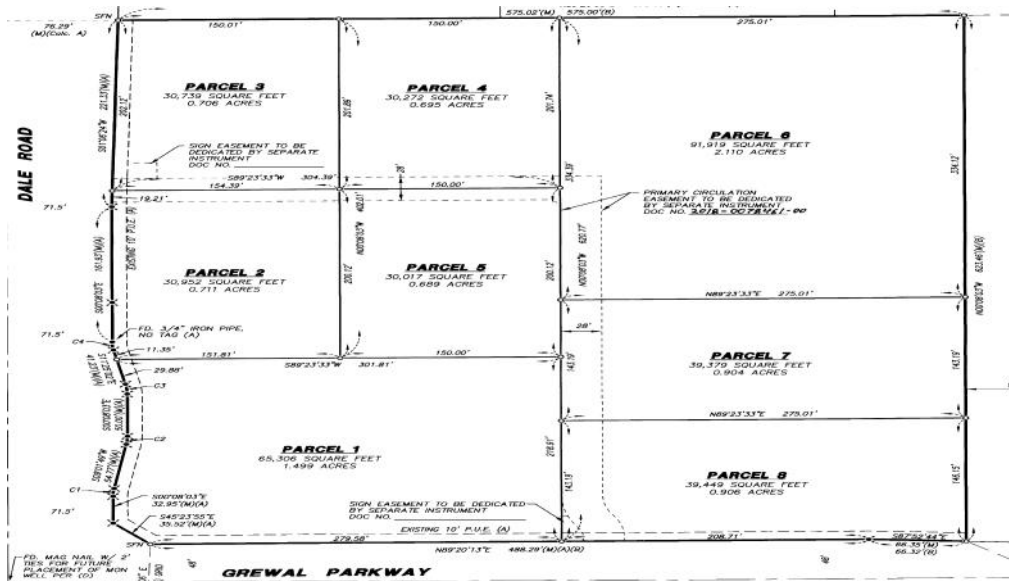


RAND COMMERCIAL PROPERTIES

Retail Pad Development Dale Road location across from Kaiser Hospital Build to Suite or Ground Lease



- Parcel 3: Restaurant use with drive thru.
- Parcel 2 and 4: 2,000 sqft up to 10,000 sqft office / retail space available
- Lease rate upon request

Neighboring Tenants

Vintage Faire Mall, Kaiser Permanente Hospital, Costco, Residence Inn by Marriott, 200 + new upscale apartments, Surgery Center, Retirement Center.

Property Highlights

- *Located just off the corner of a signalized intersection of Dale Road and Health Care Way
- *Strong demographics in a densely populated North Modesto neighborhood that surrounds the regional Mall
- *Monument Signage available along Dale Road, a main artery to Highway 99.
- *Strong Population of approximately 54,000 residents within 3 miles