

Presbyterian Medical Tower

Presbyterian Medical Tower is a Class A medical office building on the Novant Health Presbyterian Medical Center campus. With direct hospital access, an attached parking deck, and sky bridge connections to nearby facilities, this property is built for easy care coordination and accessibility.

Space for Lease
1718 East 4th St.
Charlotte, NC 28204



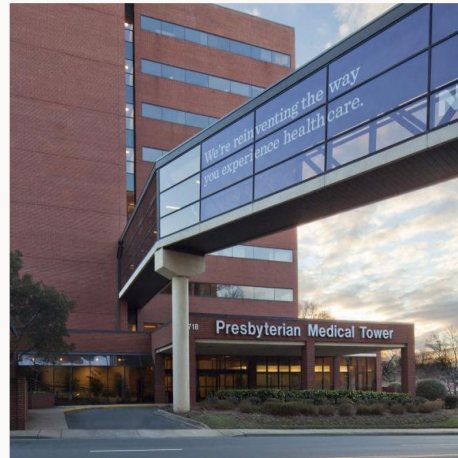
Total SF
147,614 SF



Available SF
1,060 - 15,946 SF



Property Highlights



Quick Access to Care

Located on the Novant Health Presbyterian Medical Center Campus, this facility offers convenient access to the hospital and adjacent medical office buildings for patients.



Hassle-Free Parking

An adjoining parking deck is available for both patients and providers, making daily operations smoother and more accessible.



Premier Management

To ensure a supportive and efficient environment for daily operations, this property offers highly responsive, on-site building management services for providers.



On-Site Dining Available

The third-floor café serves as a key amenity, providing easy access to food and beverages without leaving the building.



Enhanced Visibility

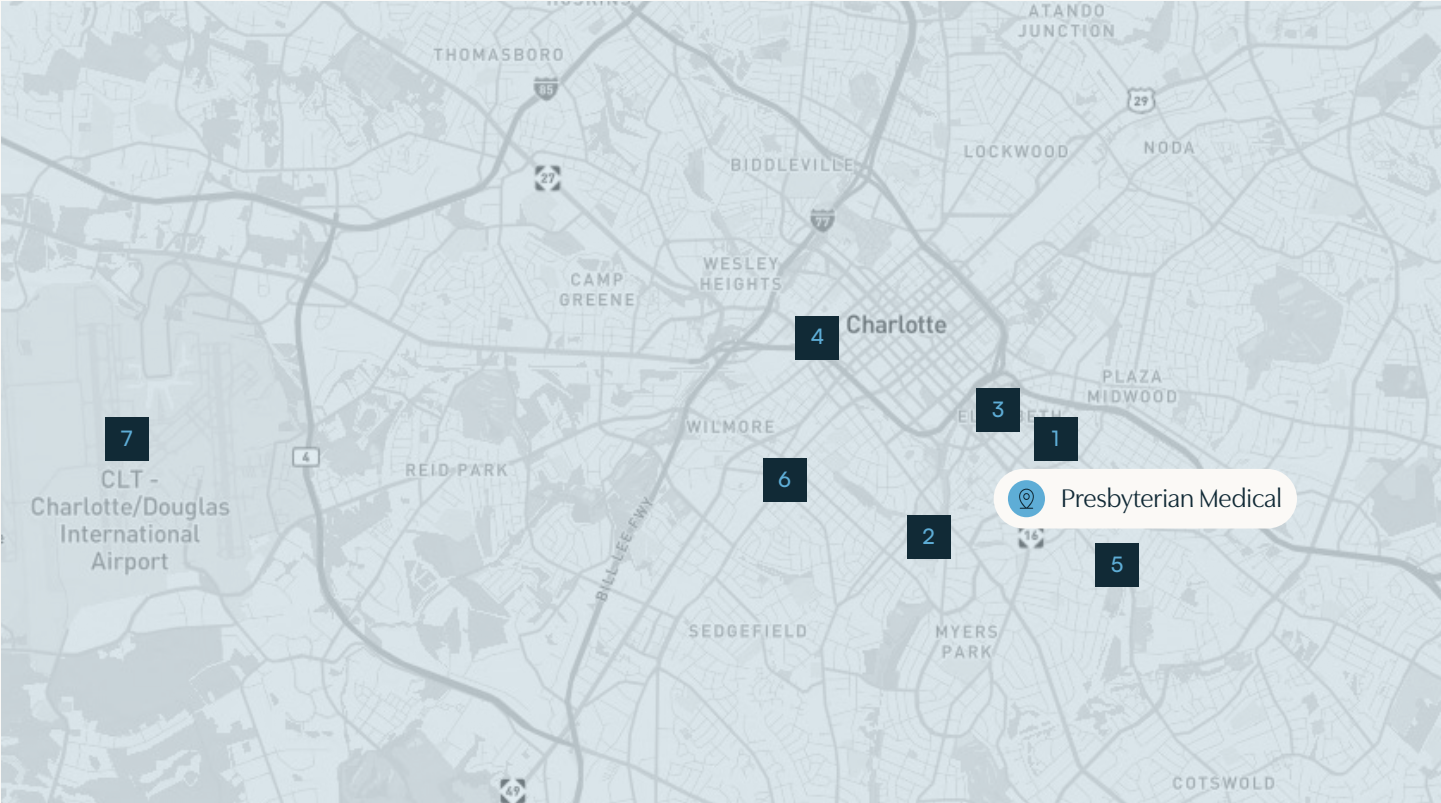
Monument signage is available, promoting strong visibility in this prominent Charlotte area and supporting brand recognition for physician practices.



Referral Potential

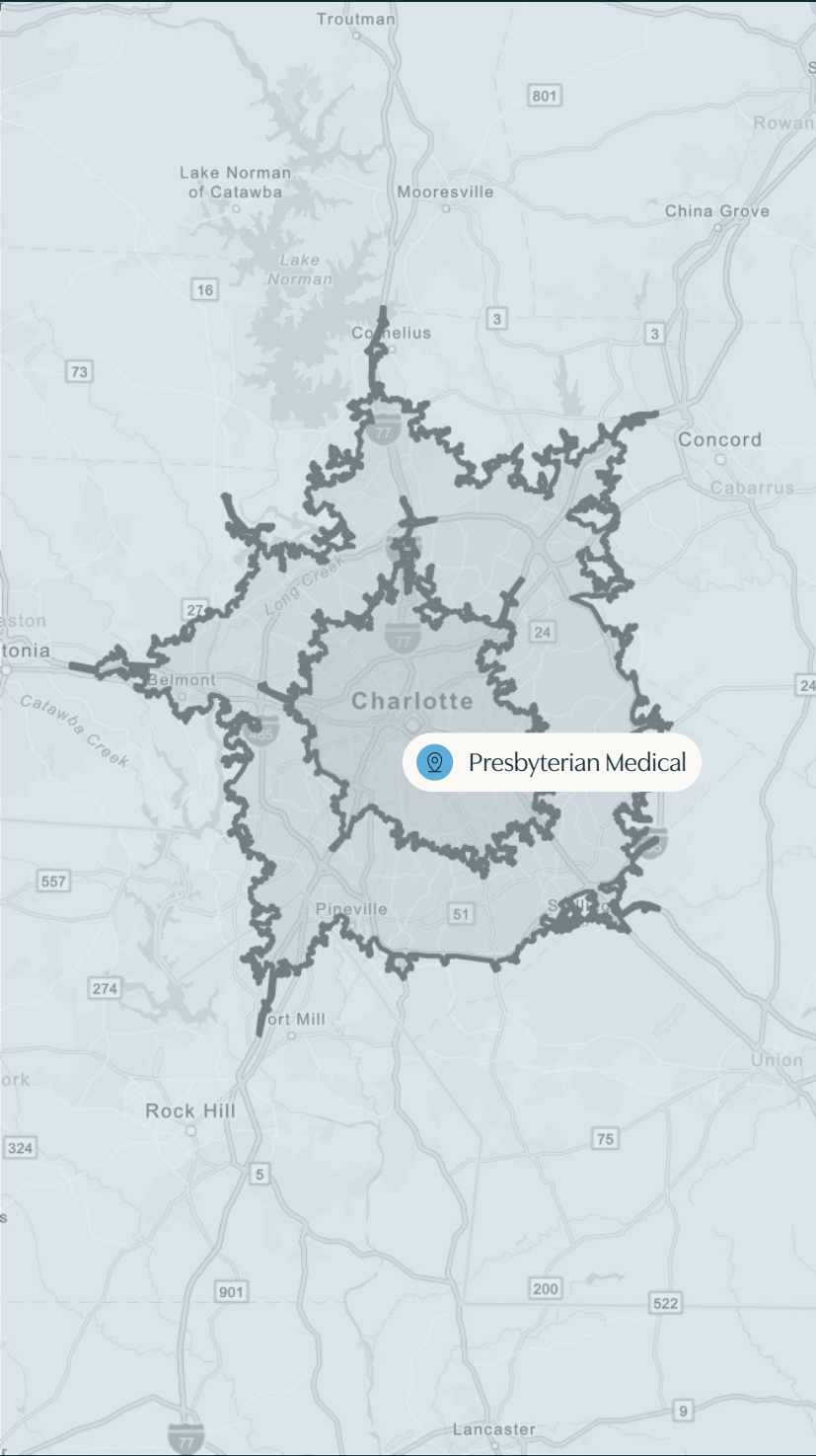
The building features a diverse mix of healthcare tenants and is connected via sky bridge to nearby medical facilities, supporting referral opportunities and collaborative care.

Points of Interest







<div>1</div> <div>Novant Health Presbyterian Medical</div> <div>📍 0.3 miles</div>	<div>5</div> <div>Eastover Medical Park</div> <div>📍 1 mile</div>	<div>Additional notable locations</div> <div><div></div>CVS Pharmacy</div> <div><div></div>Walgreens Pharmacy</div> <div><div></div>Subway</div> <div><div></div>Chick-fil-A</div> <div><div></div>Chipotle</div> <div><div></div>Dave's Hot Chicken</div> <div><div></div>Target</div> <div><div></div>Trader Joe's</div> <div><div></div>Whole Foods</div>
---	---	--





Demographics

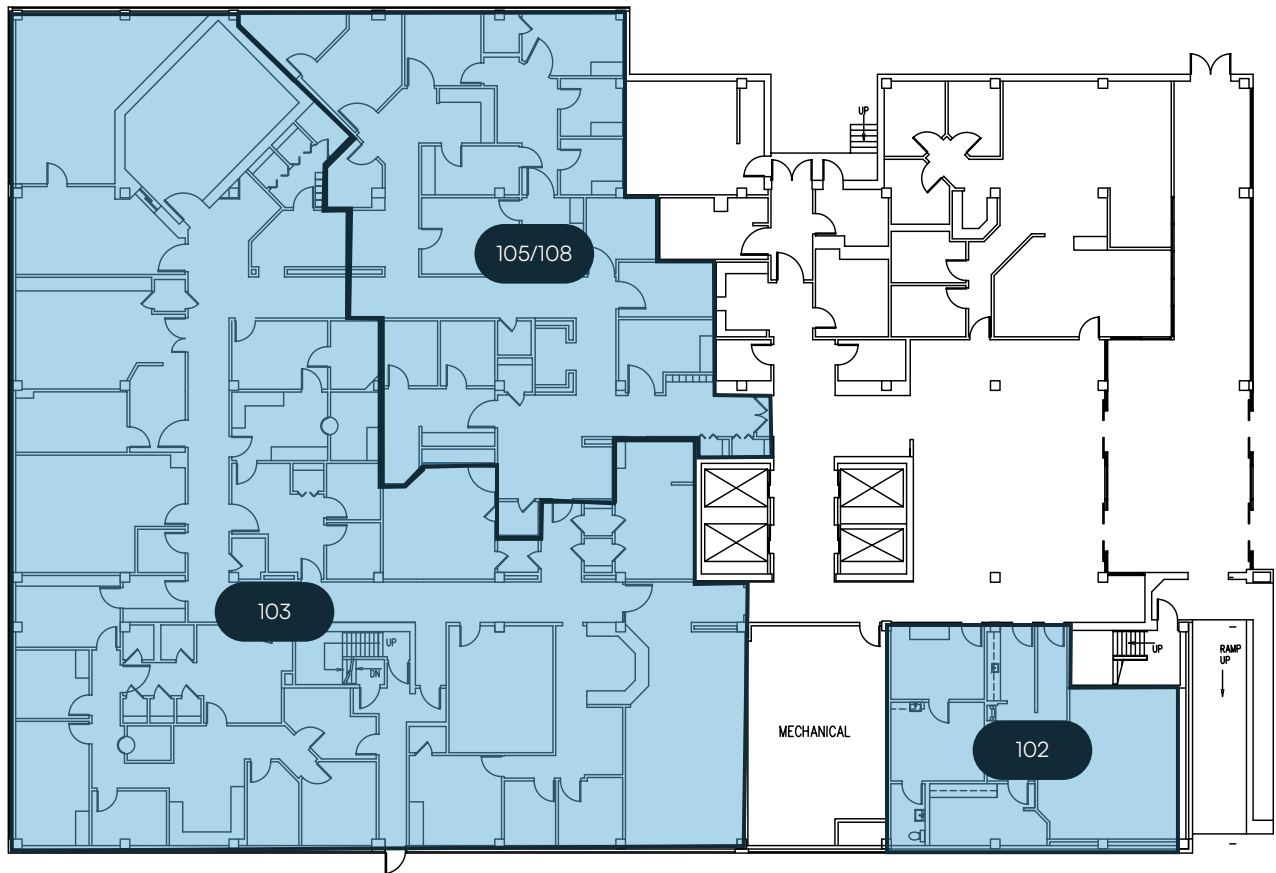


15 Minute Drive Time

-  Population
367,754
-  Median Income
\$79,026
-  Median Age
34.7 years old
-  CAGR
1.59%

25 Minute Drive Time

-  Population
1,041,907
-  Median Income
\$85,575
-  Median Age
35.5 years old
-  CAGR
1.56%



FLOOR PLAN

Floor One

Suite 102



Size
1,487 RSF



Availability
Vacant

Suite 103



Size
10,574 RSF



Availability
Vacant

Suite 105/108



Size
3,885 RSF



Availability
Vacant



FLOOR PLAN

Floor Two

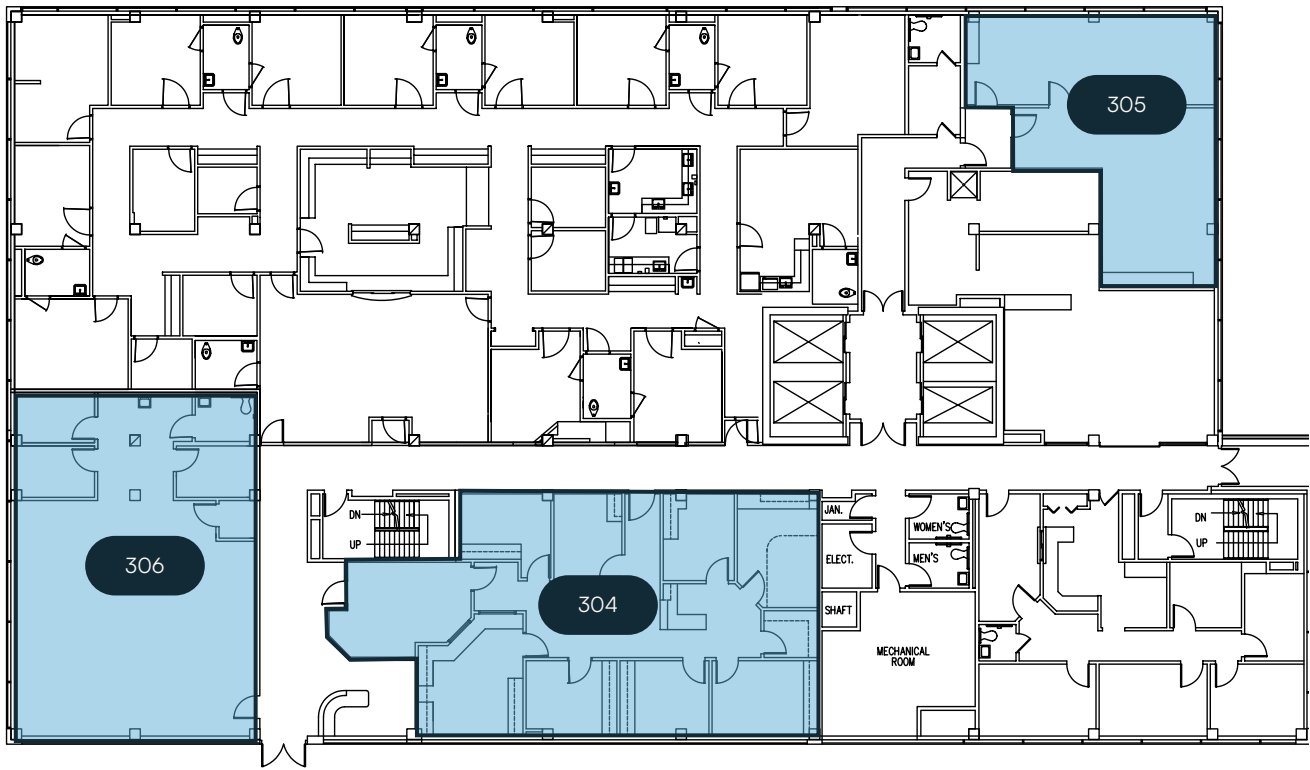
Suite 204



Size
5,724 RSF



Availability
Vacant



FLOOR PLAN

Floor Three

Suite 304



Size
2,144 RSF



Availability
Vacant

Suite 305



Size
1,060 RSF



Availability
Vacant

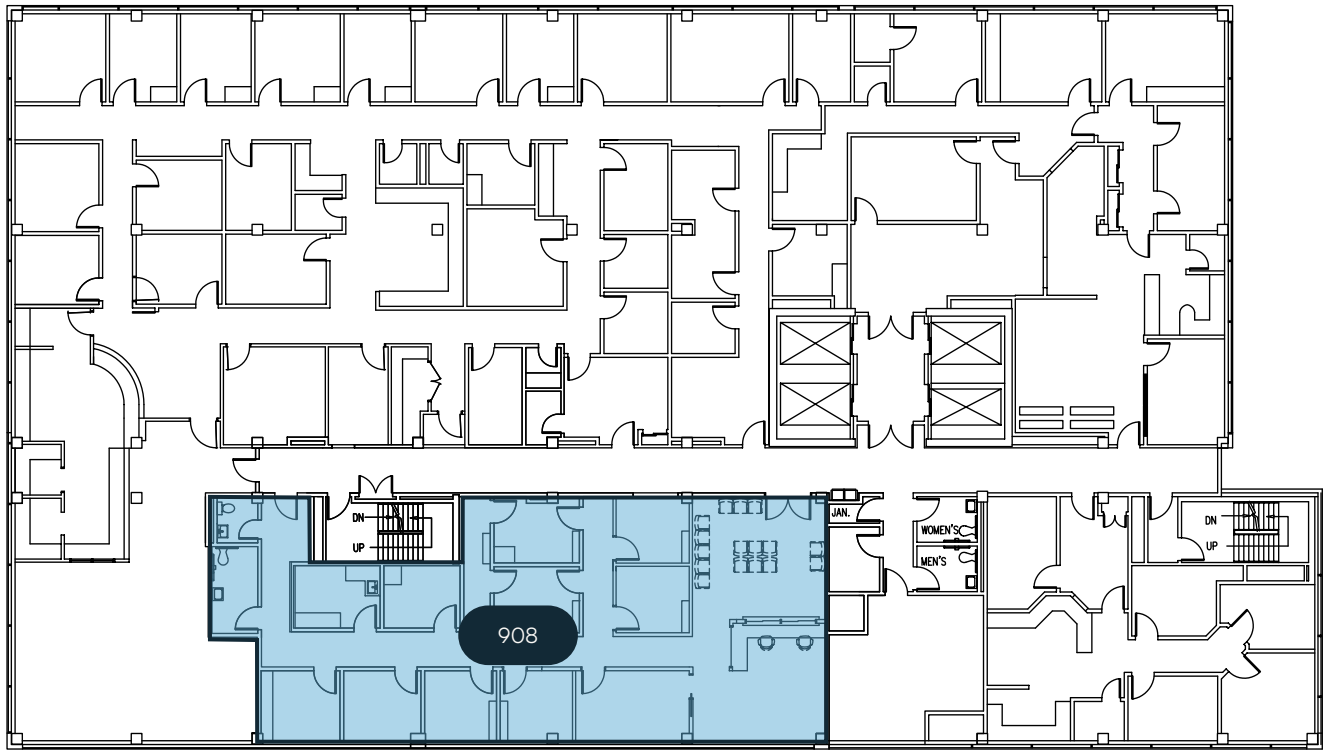
Suite 306



Size
1,718 RSF



Availability
Vacant



FLOOR PLAN

Floor Nine

Suite 908

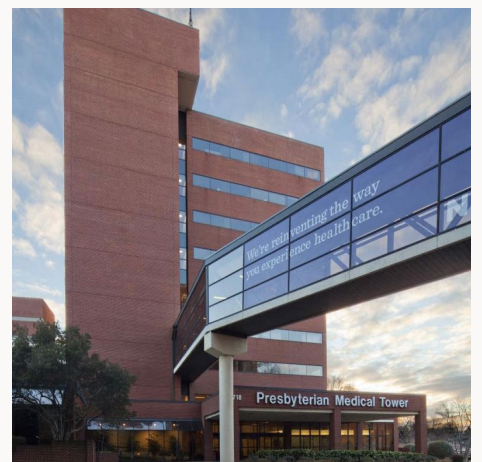


Size
2,772 RSF



Availability
Vacant

Exterior





Presbyterian Medical Tower

1718 East 4th St.
Charlotte, NC 28204

Colin Stewart
Director, Brokerage Services



Phone
(704) 962-1387



Email
colin.stewart@meadowsandohly.com