

Downing Street

Land for Sale | Wilson, NC



TOTAL SITE
±21.06 AC

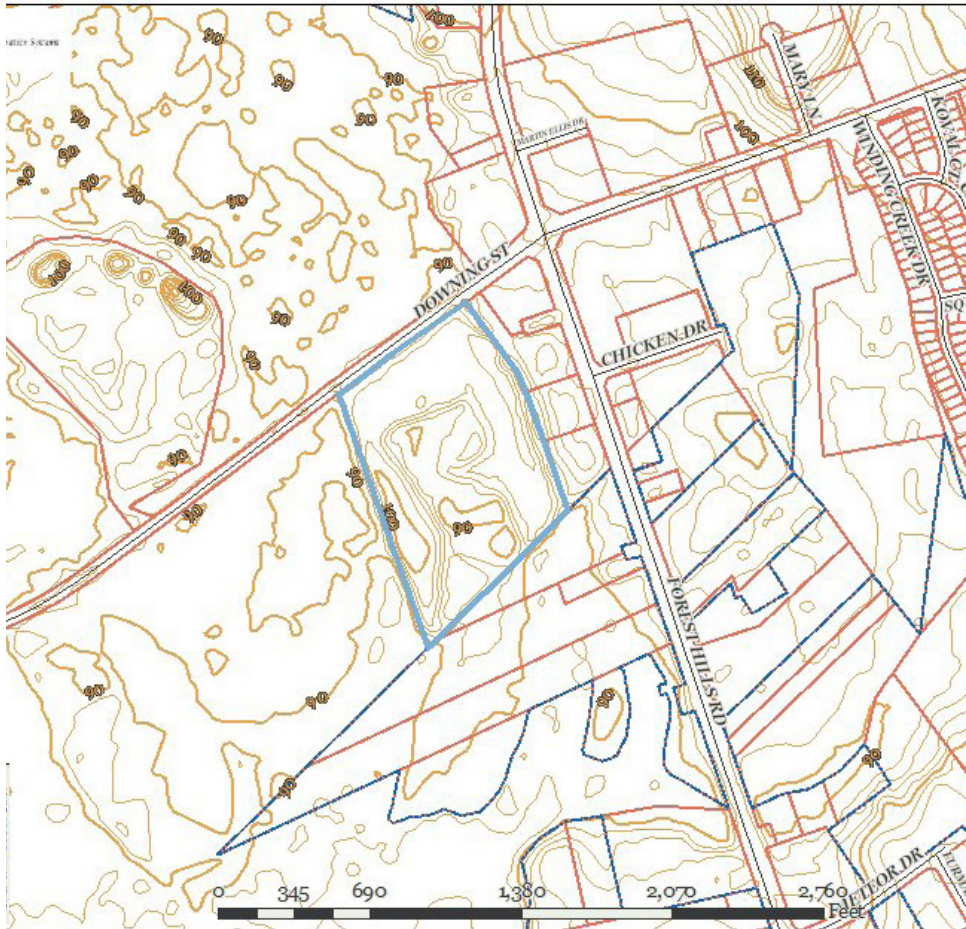
SITE FEATURES

| | |
|-------------|---|
| ADDRESS | Downing Street SW, Wilson, NC 27893 |
| ACREAGE | 21.06 acres |
| ZONING | General Commercial & RMX (Residential Mixed Use) |
| SALES PRICE | \$421,200 (\$20,000/acre) |

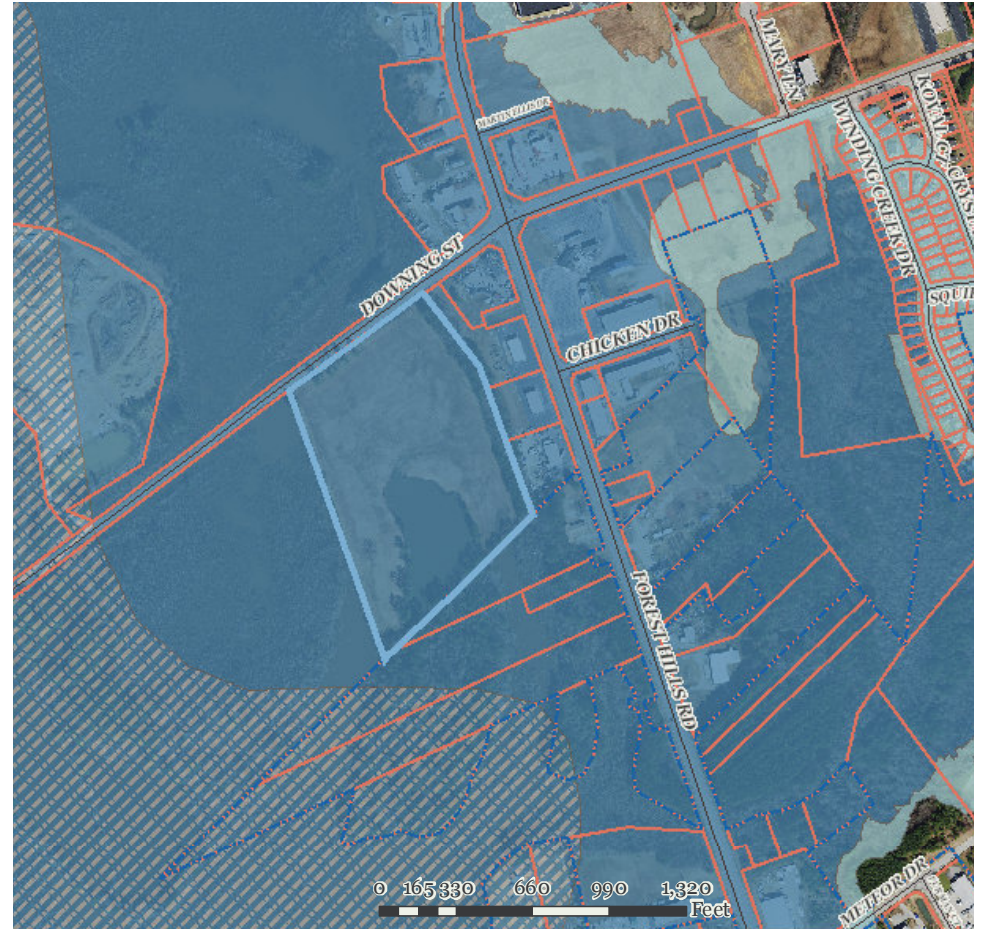
CONTACT
MICHAEL WALLACE | 919.219.1112 | mwallace@triprop.com



TOPOGRAPHY & FLOOD HAZARD MAP



- Street Number
- Streets
- Tax Parcels
- 10' Contour Intervals
- + Rail Roads
- Municipal Boundaries
- 2' Contour Intervals
- Buckhorn Reservoir



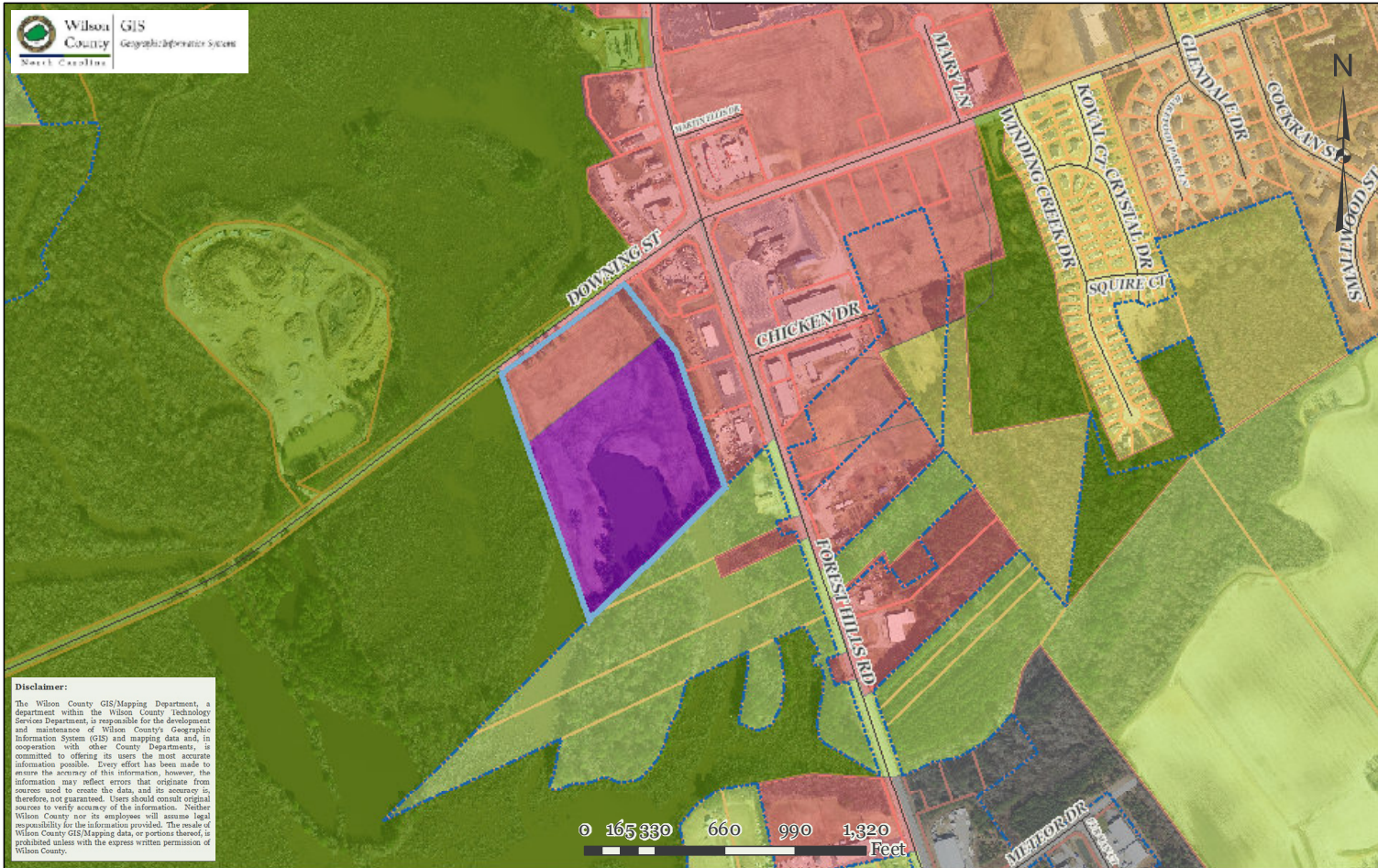
- Street Number
- Streets
- Tax Parcels
- + Rail Roads
- Municipal Boundaries
- Flood Hazards
- 0.2% Annual Flood Hazard Zone
- 1% Annual Flood Hazard Zone
- Floodway

CONTACT
 MICHAEL WALLACE | 919.219.1112 | mwallace@triprop.com



All information provided herein is from sources deemed reliable. However, all information is subject to verification. NAI Tri Properties does not independently verify nor warrant the accuracy of the information.

ZONING MAP



Disclaimer:
 The Wilson County GIS/Mapping Department, a department within the Wilson County Technology Services Department, is responsible for the development and maintenance of Wilson County's Geographic Information System (GIS) and mapping data and, in cooperation with other County Departments, is committed to offering its users the most accurate information possible. Every effort has been made to ensure the accuracy of this information, however, the information may reflect errors that originate from source used to create the data, and its accuracy is therefore, not guaranteed. Users should consult original sources to verify accuracy of the information. Neither Wilson County nor its employees will assume legal responsibility for the information provided. The use of Wilson County GIS/Mapping data, or portions thereof, is prohibited unless with the express written permission of Wilson County.

- City of Wilson Zoning Districts
- Overlaying Conditional District
 - Overlaying Conditional Use Permit
- District
- OS
 - NC
 - ICD
 - GC
 - HC
 - CCMX
 - NMX
 - RMX
 - IMX
 - LI
 - HI
 - RA
 - SR4
 - SR6
 - GR6
 - UR
 - MHR

Owner: GSM PROPERTIES LLC
 PIN: 3711-03-7258.000
 Deed Reference: 2890/297
 Plat Reference: 1/102
 Deed Acres: 21.06

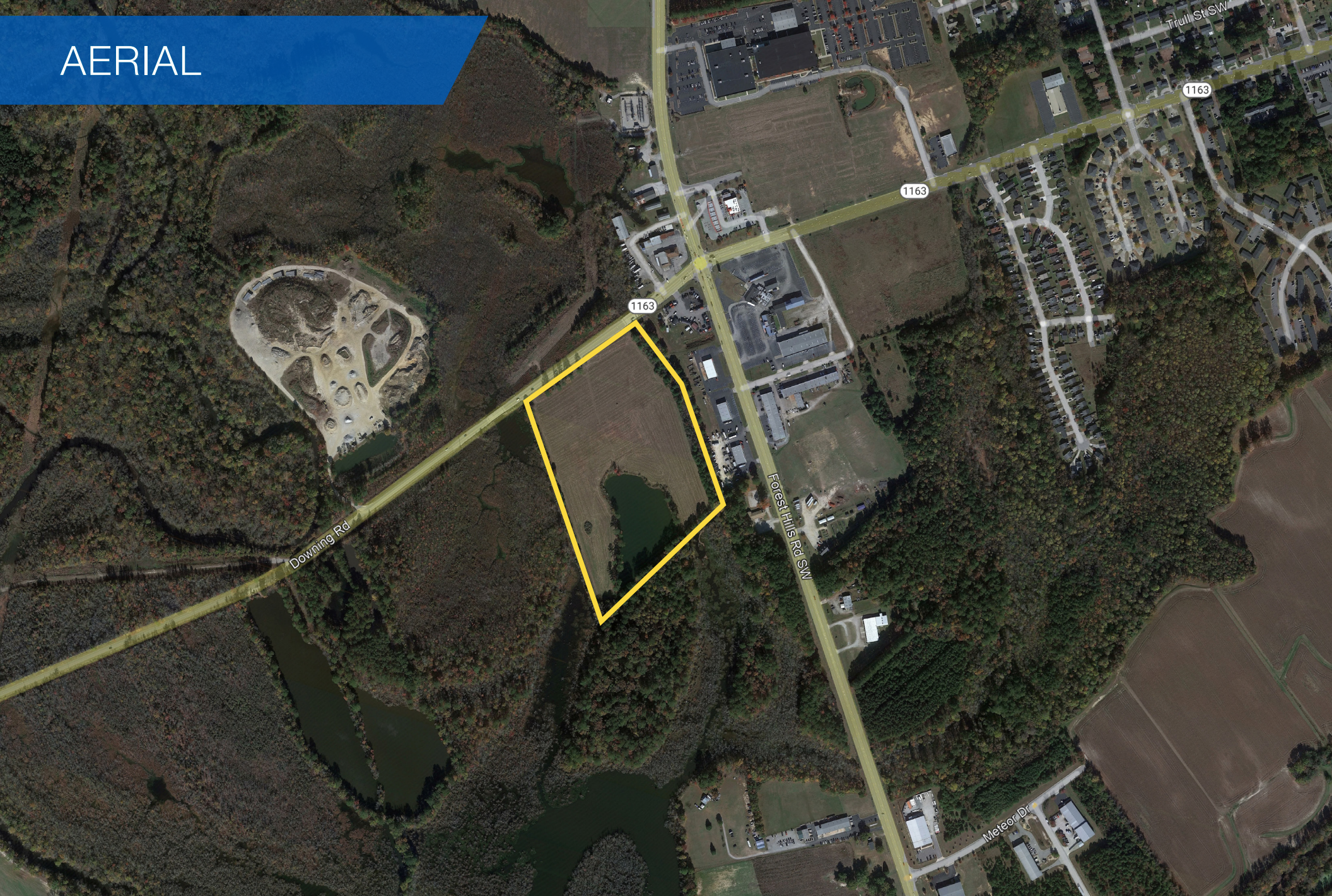
October 6, 2023

- Street Number
- Streets
- Conditional Use Districts
- Overlaying Conditional Use Permit District
- Rail Roads
- Municipal Boundaries
- Overlaying Conditional District

CONTACT
 MICHAEL WALLACE | 919.219.1112 | mwallace@triprop.com



AERIAL

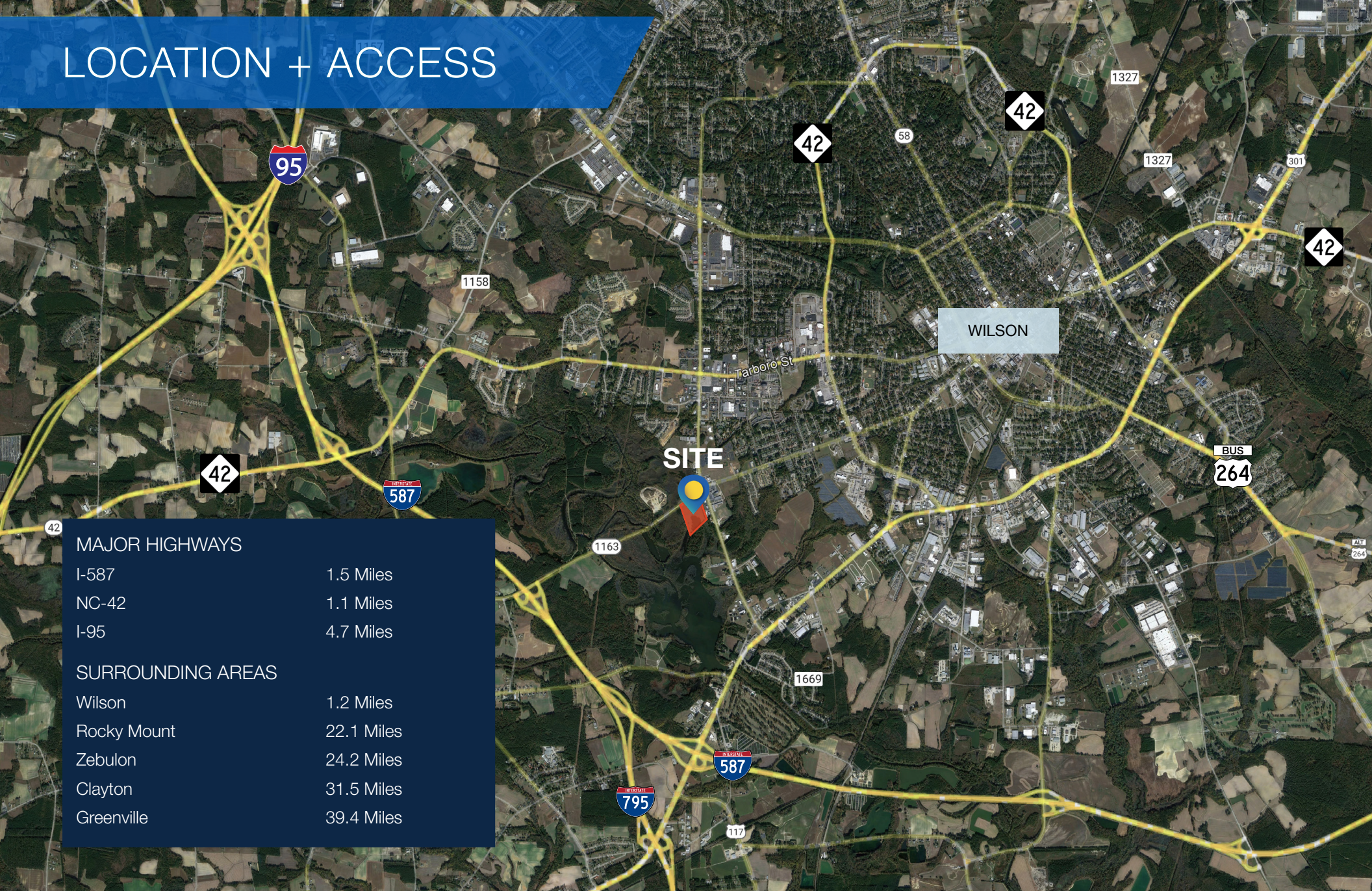


CONTACT
MICHAEL WALLACE | 919.219.1112 | mwallace@triprop.com

All information provided herein is from sources deemed reliable. However, all information is subject to verification. NAI Tri Properties does not independently verify nor warrant the accuracy of the information.

NAI TRI PROPERTIES

LOCATION + ACCESS



MAJOR HIGHWAYS

| | |
|-------|-----------|
| I-587 | 1.5 Miles |
| NC-42 | 1.1 Miles |
| I-95 | 4.7 Miles |

SURROUNDING AREAS

| | |
|-------------|------------|
| Wilson | 1.2 Miles |
| Rocky Mount | 22.1 Miles |
| Zebulon | 24.2 Miles |
| Clayton | 31.5 Miles |
| Greenville | 39.4 Miles |

CONTACT

MICHAEL WALLACE | 919.219.1112 | mwallace@triprop.com

NAI TRI PROPERTIES

All information provided herein is from sources deemed reliable. However, all information is subject to verification. NAI Tri Properties does not independently verify nor warrant the accuracy of the information.