

FOR LEASE

**2857 E PICO BLVD
LOS ANGELES, CA 90023**

**±4,000 SF
INDUSTRIAL UNIT**



For more information, please contact:

Daniel Park

(213) 446-0396

Danielpark777@hotmail.com

DRE# 01227056

PARK INDUSTRIAL
SPECIALIZING IN INDUSTRIAL REAL ESTATE SERVICES

Park Industrial Realty
800 McGarry St, 5th Floor
Los Angeles, CA 90021
Corporation DRE# 01983713

Available SF:	4,000 SF	• Clean and functional dock high warehouse space in a larger building
Land SF:	POL	
Office SF:	785 SF	• Accessible Central LA location next to Arts District
Year Built:	1935	• Newly constructed office & restroom
Clear Height:	14'	• 1/2 mile to East LA interchange & major freeways
Loading:	1 DH	
Zoning:	M3-1	• Clear span space without columns
Lease Rate/Mo:	\$4,800 (\$1.20/SF) Gross	• Vacant for immediate occupancy

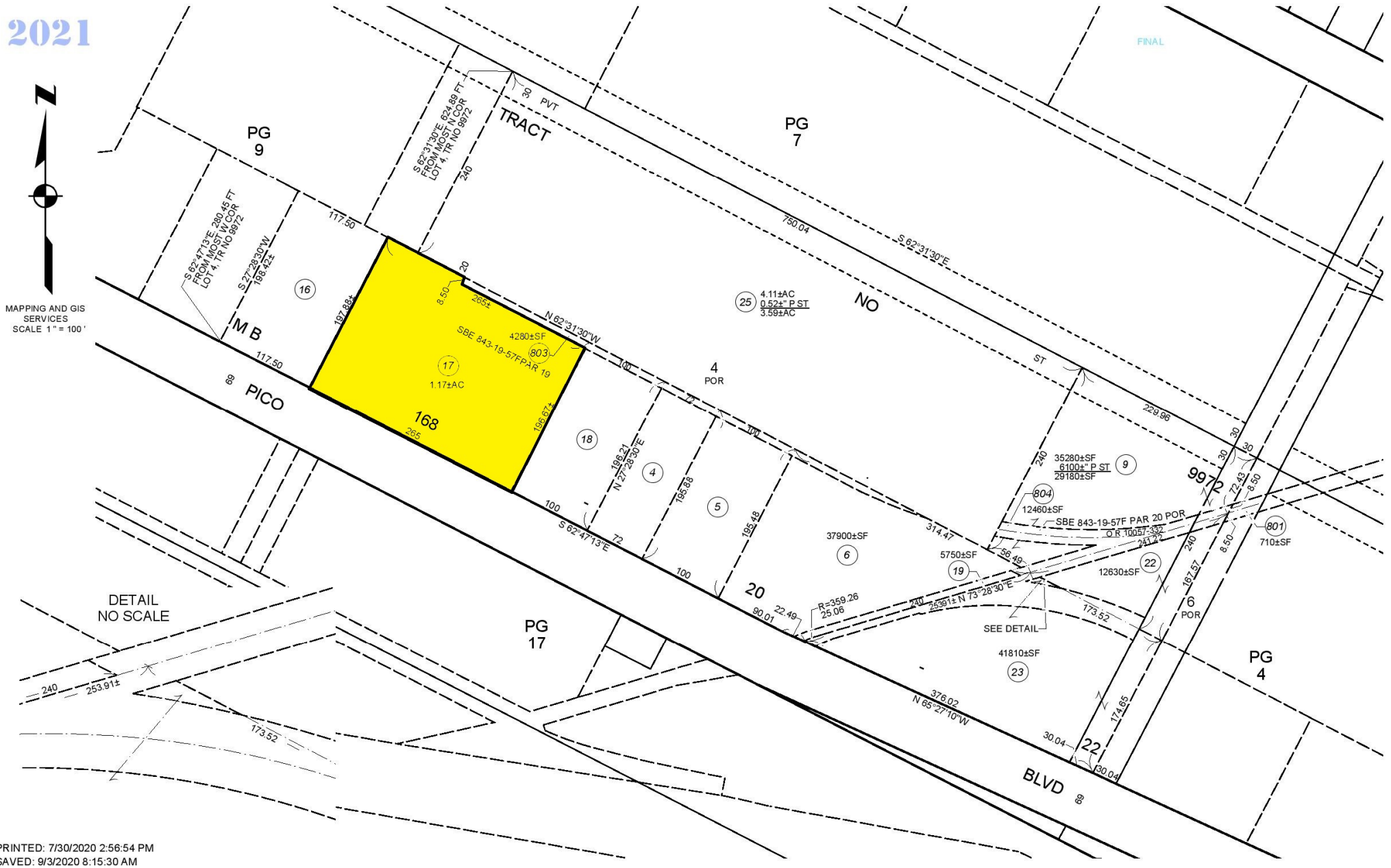
All information has been furnished from sources which we deem reliable, but for which we assume no liability. All measurements are approximate. Broker/Owner do not warrant its accuracy. Buyer/Lessee must verify all information.

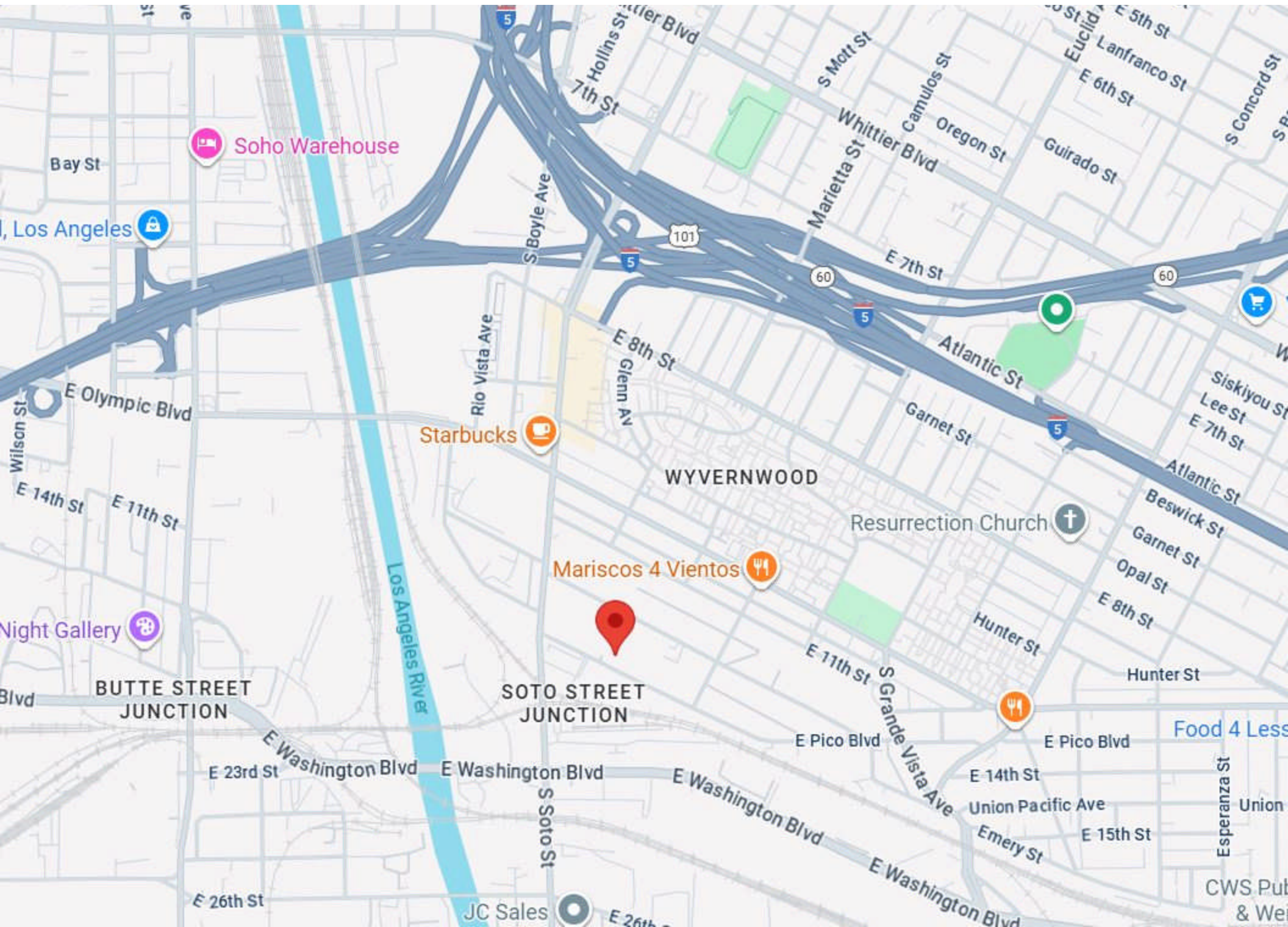
5169	8 SHEET	P. A. 5169-8	TRA 12704	REVISED: 4-13-60 2-9-66	670112 670410 680125010	93031511008001-27 20000112 2007052204001001-27	2015071502001001-27 2015071502003001-27 2020030528-27	2020090373001001-27 2020090373002001-27	SEARCH NO	OFFICE OF THE ASSESSOR COUNTY OF LOS ANGELES COPYRIGHT © 2002
------	------------	-----------------	--------------	-------------------------------	-------------------------------	--	---	--	-----------	---

2021



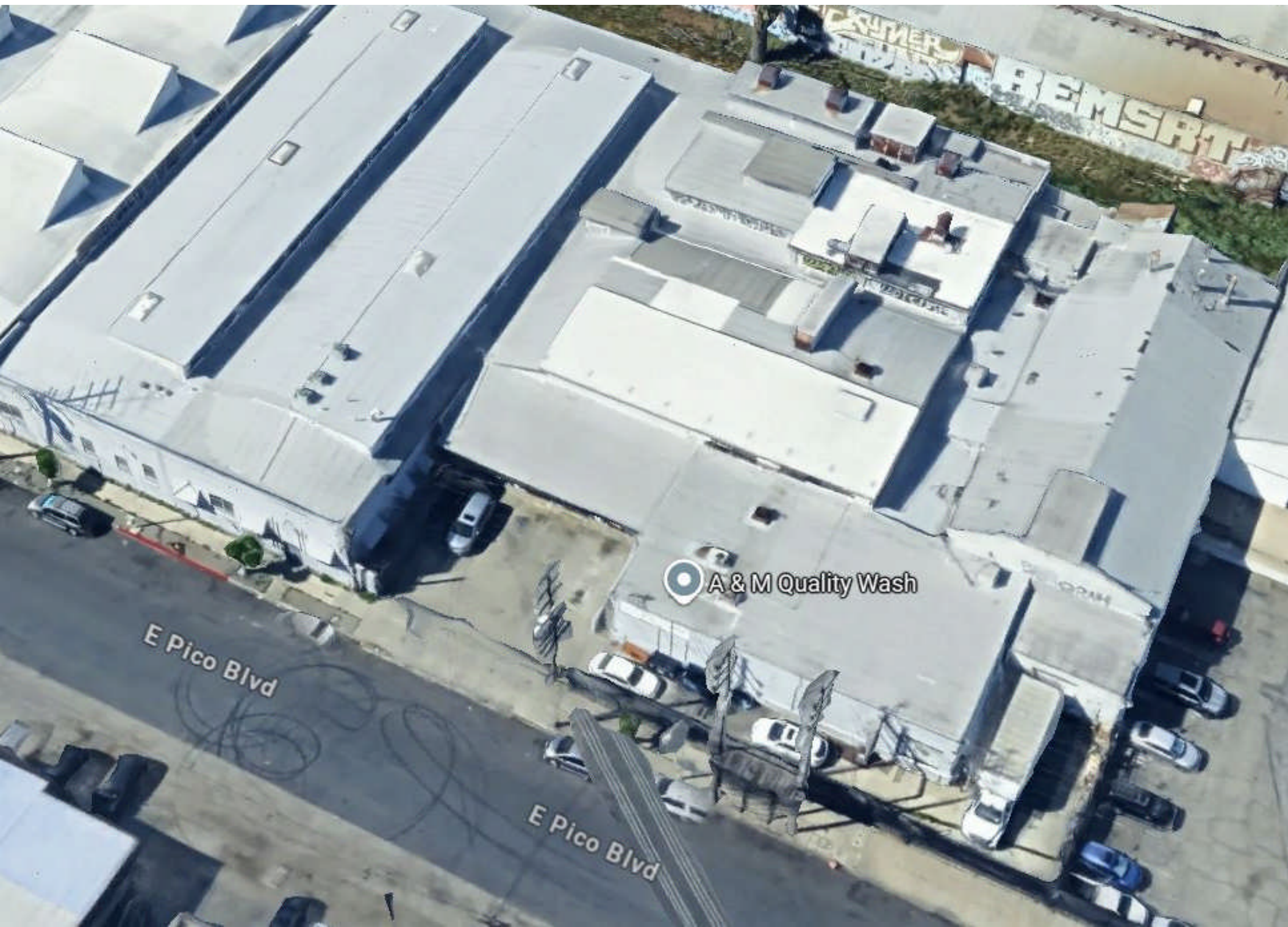
MAPPING AND GIS
SERVICES
SCALE 1" = 100'





FOR LEASE | ±4,000 SF Industrial Unit

2857 E Pico Blvd



FOR LEASE | ±4,000 SF Industrial Unit

2857 E Pico Blvd





FOR LEASE | ±4,000 SF Industrial Unit

2857 E Pico Blvd



