

FOR SALE



REECE
COMMERCIAL REAL ESTATE
a Berkshire Hathaway Affiliate



15885 S 169 HWY

OLATHE, KS

\$11 PSF

Property Details

- 3.3 Acres of land at 169 HWY & 159th Street
- M-2 zoning with potential of C-3
- \$1,580,000

For more information contact:

JIM THOME

C | 913.548.8700

O | 913.851.7300

jthome@reececommercial.com

ALEX THOME

C | 913.709.3849

O | 913.851.7300

athome@reececommercial.com

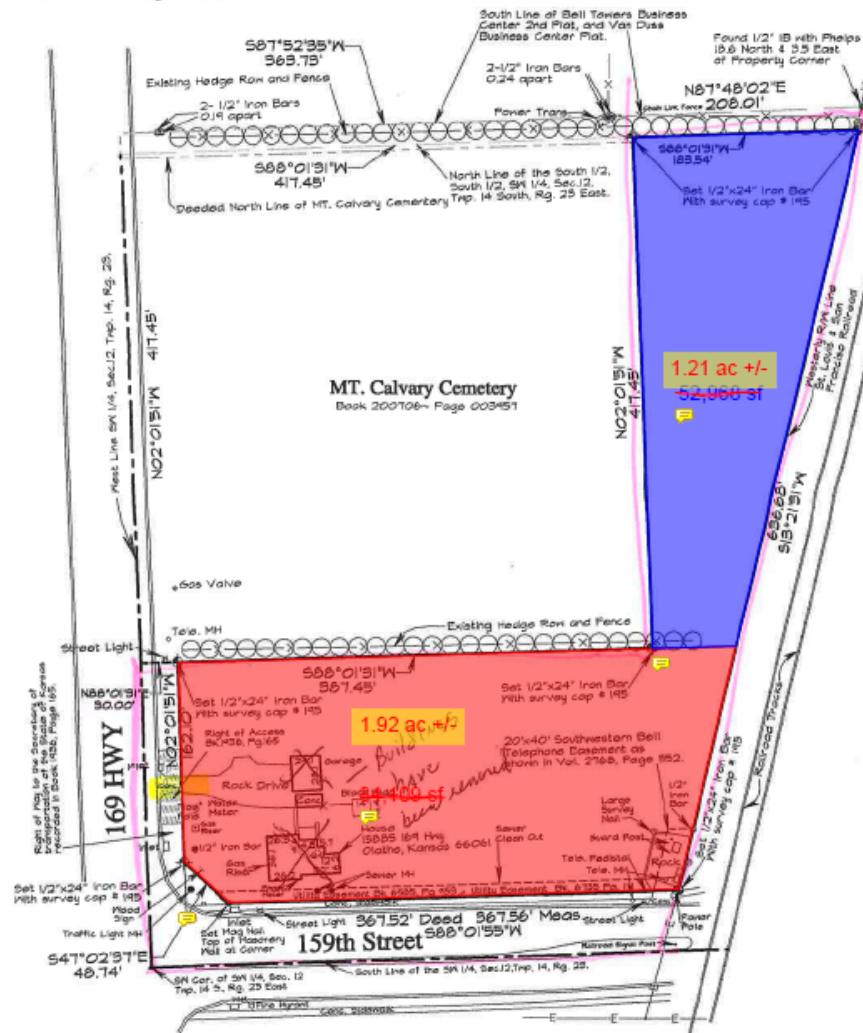
FOR SALE



REECE
COMMERCIAL REAL ESTATE
a Berkshire Hathaway Affiliate

Legal Description:

That Part of the South Half of the South Half of the Southwest Quarter of Section 12, Township 14, Range 23, lying West of the Center line of the St. Louis and San Francisco Railroad Co. Right of Way and subject to said Right of Way, Except about Four Acres used for a Cemetery in the Northwest Corner of said Property, and subject to use of part of the West side of said Property for Highway, except the .03 acres Southwest Corner thereof taken by the Highway, except any part taken or used for Streets, Roads or Highways, Johnson County, Kansas



The Information Above Has Been Obtained From Sources Believed Reliable. While We Do Not Doubt Its Accuracy We Have Not Verified It And Make No Guarantee, Warranty Or Representation About It. It Is Your Responsibility To Independently Confirm Its Accuracy And Completeness. Any Projections, Opinions, Assumptions, Or Estimates Used Are For Example Only And Do Not Represent The Current Or Future Performance Of The Property. You And Your Advisors Should Conduct A Careful, Independent Investigation Of The Property To Determine To Your Satisfaction The Suitability Of The Property For Your Needs. © 2023

FOR SALE



REECE
COMMERCIAL REAL ESTATE
a Berkshire Hathaway Affiliate



The Information Above Has Been Obtained From Sources Believed Reliable. While We Do Not Doubt Its Accuracy We Have Not Verified It And Make No Guarantee, Warranty Or Representation About It. It Is Your Responsibility To Independently Confirm Its Accuracy And Completeness. Any Projections, Opinions, Assumptions, Or Estimates Used Are For Example Only And Do Not Represent The Current Or Future Performance Of The Property. You And Your Advisors Should Conduct A Careful, Independent Investigation Of The Property To Determine To Your Satisfaction The Suitability Of The Property For Your Needs. © 2023