

626 Massachusetts Avenue
Arlington MA, 02474

FOR LEASE
1,025 SF 1st Floor Office

PROPERTY HIGHLIGHTS

Iconic Arlington corner location at busy Mass. Ave. and Pleasant St. intersection

Join LocalWorks, Advisors Living Real Estate and Cambridge Savings Bank with drive-thru teller and ATM

1,025 SF first floor office space available; shared entrance from Mass Ave.

No warranty or representation, expressed or implied, is made as to the accuracy of the information contained herein, and same is submitted subject to errors, omissions, change in price, rental or other conditions, or withdrawal without notice.

CONTACT: Don Mace
Vice President of Retail Brokerage
DMace@KeyPointPartners.com
781.418.6243

Rob Grady
Vice President of Retail Brokerage
RGrady@KeyPointPartners.com
781.418.6267

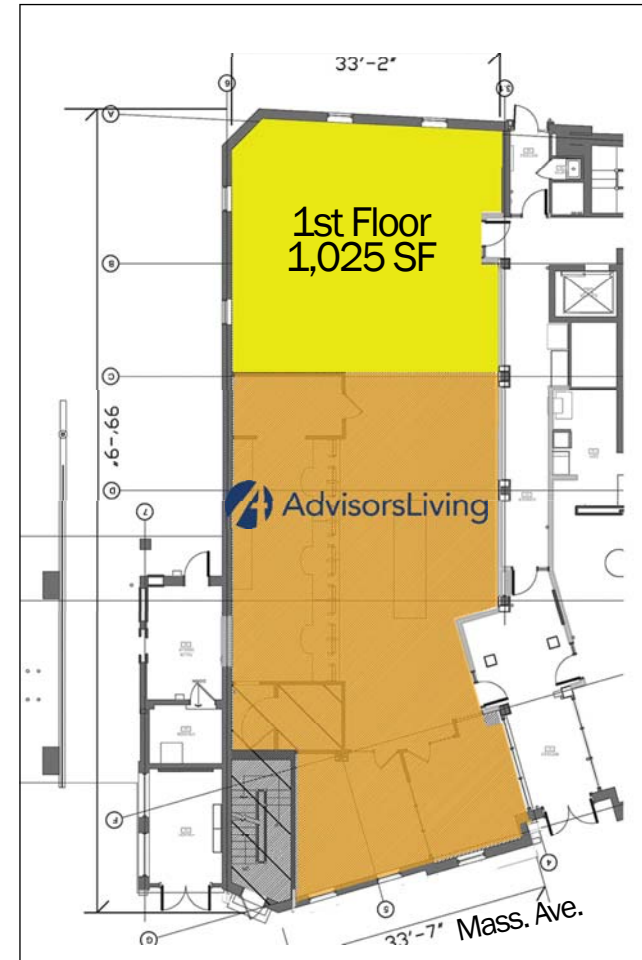
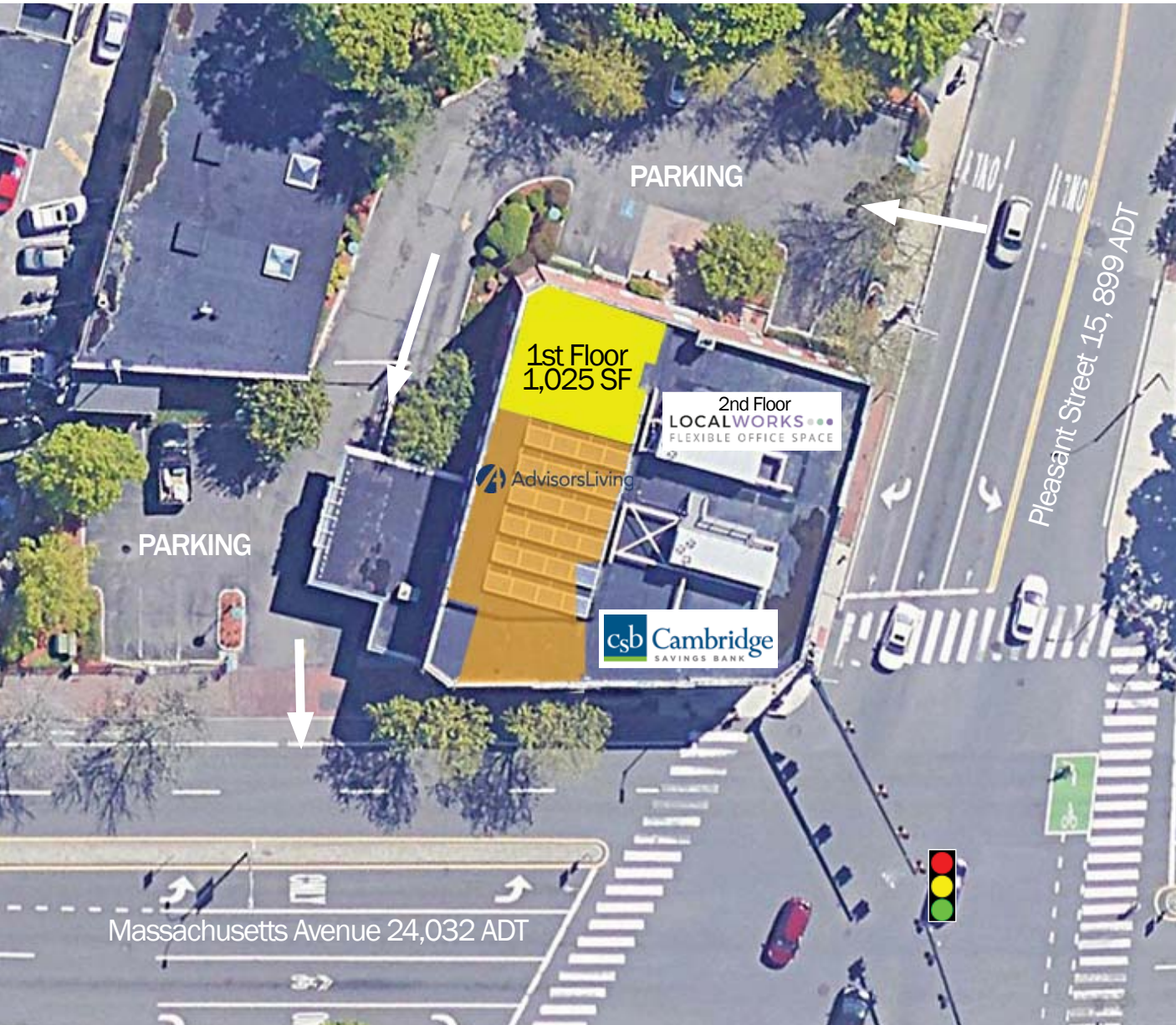
KEYPOINT
PARTNERS
KeyPointPartners.com

626 Massachusetts Avenue

Arlington MA, 02474

FOR LEASE

1,025 SF 1st Floor Office



2026 DEMOGRAPHICS	1 Mile	2 Miles	3 Miles
POPULATION	27,645	106,950	222,996
DAYTIME POPULATION	7,112	31,881	66,944
NUMBER OF HH	12,307	44,045	92,083
AVERAGE HH INCOME	\$192,828	\$201,155	\$212,250

No warranty or representation, expressed or implied, is made as to the accuracy of the information contained herein, and same is submitted subject to errors, omissions, change in price, rental or other conditions, or withdrawal without notice.

CONTACT: Don Mace
 Vice President of Retail Brokerage
 DMace@KeyPointPartners.com
 781.418.6243

Rob Grady
 Vice President of Retail Brokerage
 RGrady@KeyPointPartners.com
 781.418.6267



626 Massachusetts Avenue

Arlington MA, 02474

FOR LEASE

1,025 SF 1st Floor Office



626 Massachusetts Avenue

csb Cambridge
SAVINGS BANK

LOCALWORKS
FLEXIBLE OFFICE SPACE

AdvisorsLiving



MYSTIC WINE SHOPPE

Arlington

Minuteman Bikeway

Arlington High School



Massachusetts Avenue 24,032 ADT

Mystic St.

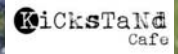


Medford St.



Arlington Fire Dept.

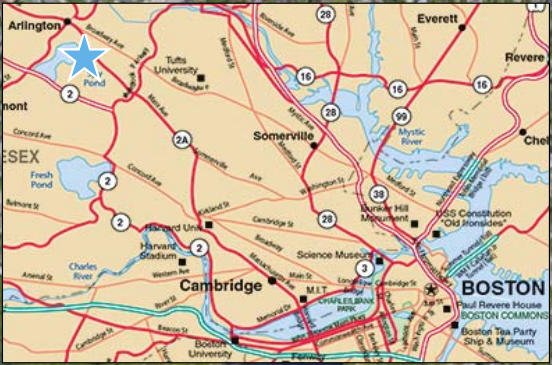
Broadway



60

1/4 Mile

3



No warranty or representation, expressed or implied, is made as to the accuracy of the information contained herein, and same is submitted subject to errors, omissions, change in price, rental or other conditions, or withdrawal without notice.

CONTACT: Don Mace
Vice President of Retail Brokerage
DMace@KeyPointPartners.com
781.418.6243

Rob Grady
Vice President of Retail Brokerage
RGrady@KeyPointPartners.com
781.418.6267

