

760 HEARTLAND DRIVE, UNIT 4

SUGAR GROVE, IL 60554



EXECUTIVE SUMMARY // INDUSTRIAL PROPERTY FOR LEASE



LEASE RATE **\$1,700 PER MONTH**

OFFERING SUMMARY

Available SF: 2,400 SF

Office Space: 300 SF +/-

Ceiling Height: 15' Clear

Drive-In Doors: 1 (12'x14') and 1 (10'x10')

Docks: 1 Common (10'x15')

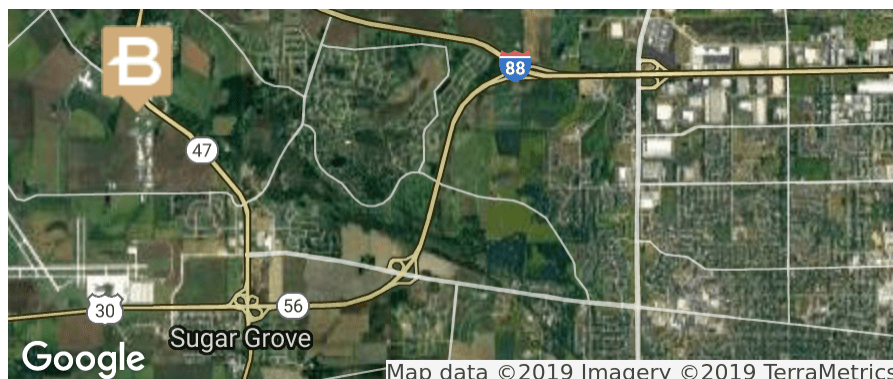
Car Parking: Ample, paved

PROPERTY OVERVIEW

Rare small space with dock and drive-in access. Minutes from I-88 via Rt. 47.

LOCATION OVERVIEW

Waubonsee Corporate Park with easy access to major transportation via Rt. 47, I-88.



For More Information:

BRIAN LINDGREN

847.758.9200 x305

blindgren@browncommercialgroup.com

MARIA MCNEIL

847.758.9200 x308

mmcneil@browncommercialgroup.com

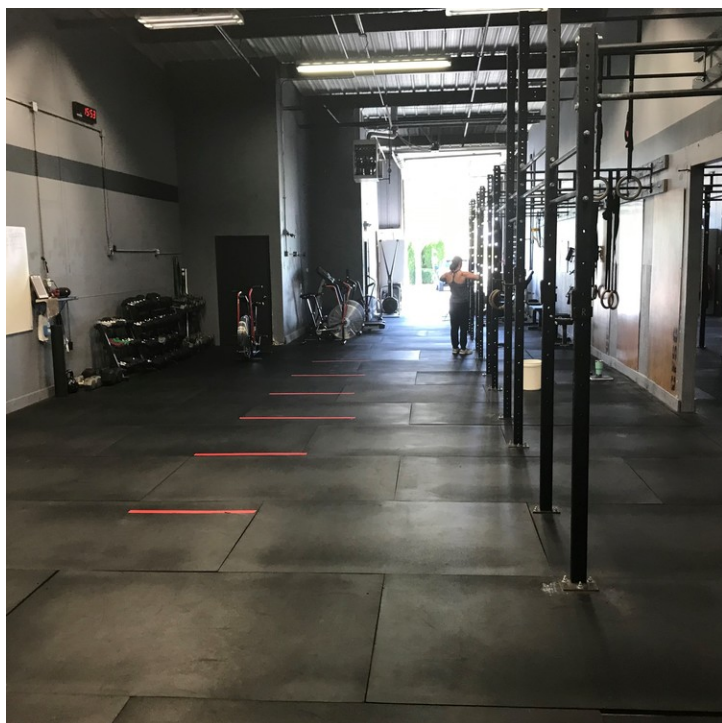


760 HEARTLAND DRIVE, UNIT 4

SUGAR GROVE, IL 60554



ADDITIONAL PHOTOS // INDUSTRIAL PROPERTY FOR LEASE



For More Information:

BRIAN LINDGREN

847.758.9200 x305

blindgren@browncommercialgroup.com

MARIA MCNEIL

847.758.9200 x308

mmcneil@browncommercialgroup.com

