

FOR LEASE

5001 West Village Green Drive
Midlothian, VA 23112

Brandermill Professional Center
Office & Medical Space
1,250 – 2,500 SF Suites



Parker Hall
(804) 339-7639 | parker@ccrealtyllc.com

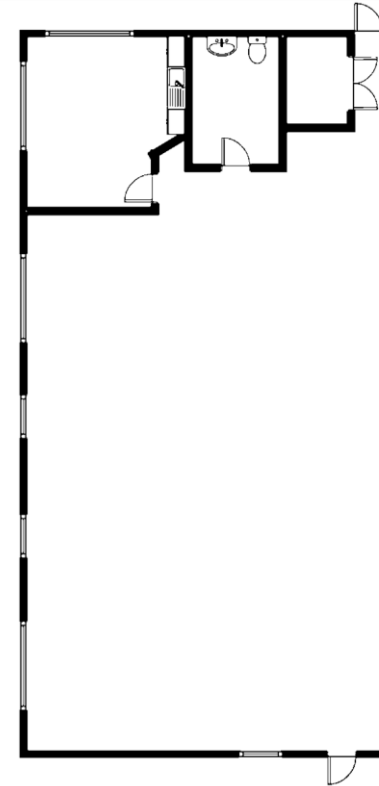
Terry Earnest, CCIM
(804) 744-9290 | terry@ccrealtyllc.com

Chesterfield Commercial Realty
5001 West Village Green Drive, Suite 203 | Midlothian, VA 23112

Property Details

- Suite 103 & Suite 201 Currently Available
- 1,250 SF & 2,500 Suites
- \$12.00 - \$14.00 / SF NNN
- Individual Restrooms, HVAC, & Electric Meters for Each Suite
- New Roof & Newly Painted Building
- Front & Rear Access
- C-2 Neighborhood Business Zoning
- Close access to I-288 & Powhite Parkway via Hull Street Road & Old Hundred Road

Suite 201



Demographics

	<i>1 Mile</i>	<i>3 Miles</i>	<i>5 Miles</i>
<i>Total Population</i>	<i>5,305</i>	<i>49,402</i>	<i>113,983</i>
<i>Average Household Income</i>	<i>\$110,315</i>	<i>\$107,671</i>	<i>\$118,375</i>

Aerial View

