

**AVISON  
YOUNG**

Office space for lease  
**34-36 King Street East**  
Short Term Opportunities Available



**Get more information**

**Andrew Boyd\***

Principal  
+1 416 673 4052  
[andrew.boyd@avisonyoung.com](mailto:andrew.boyd@avisonyoung.com)

**Michael Stevens\***

Sales Representative  
+1 647 696 4545  
[michael.stevens@avisonyoung.com](mailto:michael.stevens@avisonyoung.com)

**Brett Armstrong\***

Principal and Practice Leader  
+1 416 673 4041  
[brett.armstrong@avisonyoung.com](mailto:brett.armstrong@avisonyoung.com)

**Yris Van der Ploeg\***

Sales Representative  
+1 416 673 4048  
[yris.vanderploeg@avisonyoung.com](mailto:yris.vanderploeg@avisonyoung.com)

\*Sales Representative



## 34-36 King Street East

## Property Details



Various suites available (many built out, ready for occupancy)



Flexible Term lengths available



Steps away from King Subway Station



Opportunity for exterior building signage for larger user

**Asking rate:** \$45.00 psf Gross

**Occupancy:** Immediate

\*All suites are built-out



34 King St E - 5th Floor

### 34 King Street East

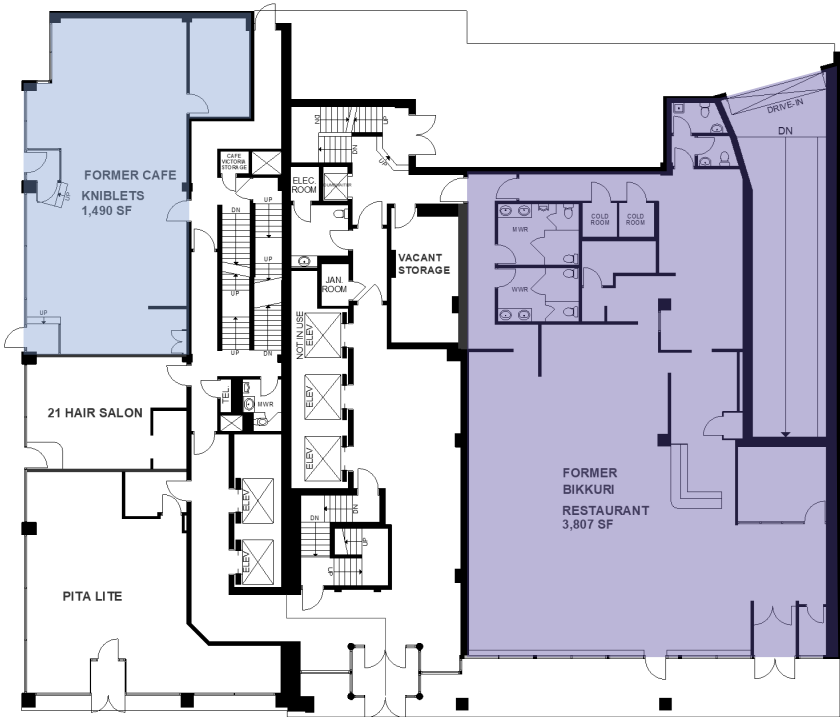
Suite *	Size
<b>Ground Floor Retail Space</b>	1,490 sf
<b>2nd Floor</b>	3,701 sf
<b>3rd Floor</b>	3,744 sf
<b>4th Floor</b>	3,743 sf
<b>5th Floor</b>	3,742 sf
<b>600</b>	1,610 sf
<b>601</b>	2,143 sf
<b>700</b>	1,858 sf
<b>800</b>	1,933 sf
<b>801</b>	1,819 sf
<b>1010</b>	2,342 sf
<b>1100</b>	997 sf
<b>1101</b>	1,503 sf
<b>12th Floor</b>	3,726 sf

### 36 King Street East

Suite *	Size
<b>Ground Floor Retail Space</b>	3,807 sf
<b>200</b>	7,905 sf
<b>300</b>	8,053 sf
<b>400</b>	8,089 sf
<b>500</b>	8,089 sf
<b>600</b>	5,028 sf
<b>601</b>	2,731 sf
<b>700</b>	5,423 sf
<b>800</b>	6,674 sf
<b>802</b>	1,485 sf

Ground Floor Retail Space

34 King Street  
1,490 sf



36 King Street  
3,807 sf

2nd Floor | Total Available: Up to 11,606 sf | Connected

34 King Street  
Suite 200  
3,701 sf



36 King Street  
Suite 200  
7,905 sf

3<sup>rd</sup> Floor | Total Available: Up to 11,797 sf | **Connected**

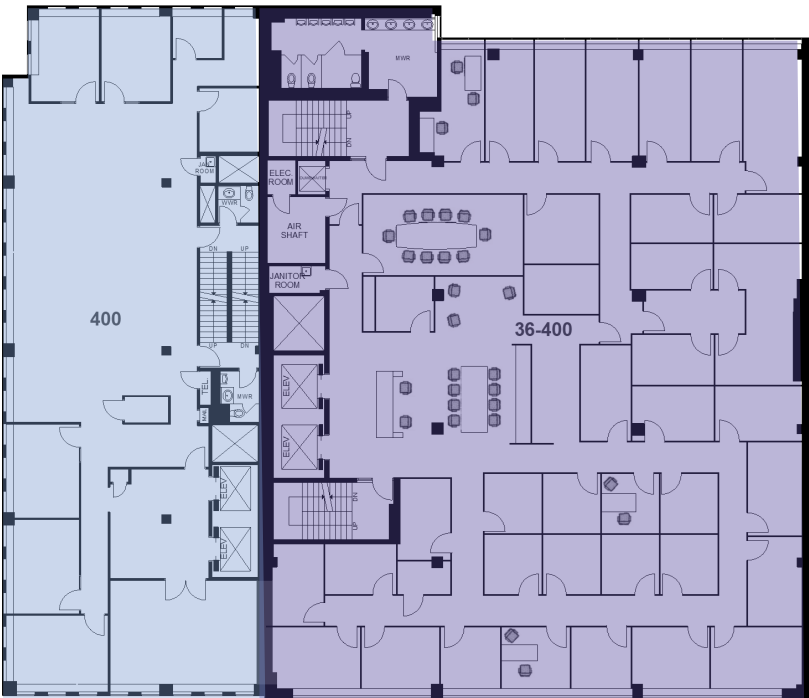
**34 King Street**  
Suite 300  
3,744 sf



**36 King Street**  
Suite 300  
8,053 sf

4<sup>th</sup> Floor

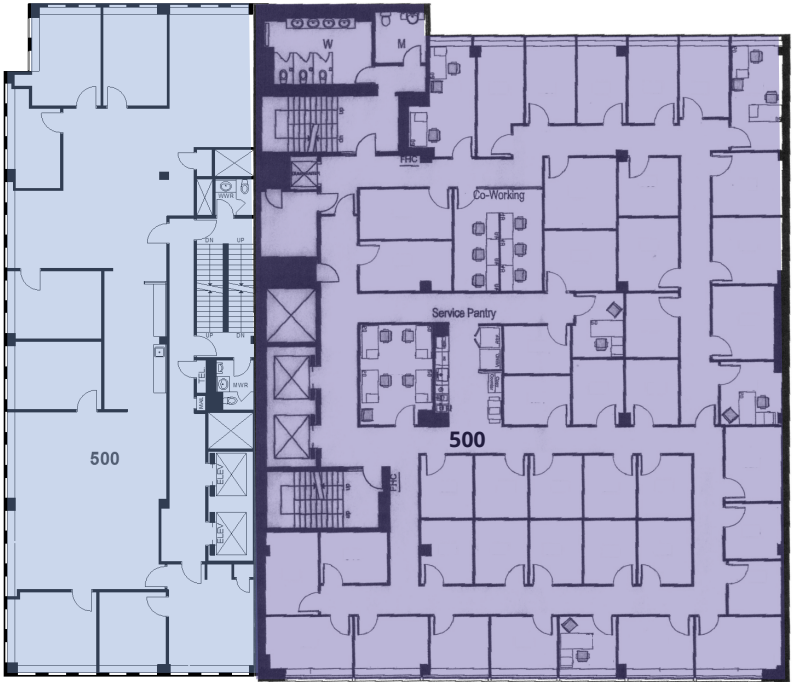
**34 King Street**  
Suite 400  
3,743 sf



**36 King Street**  
Suite 400  
8,089 sf

5<sup>th</sup> Floor

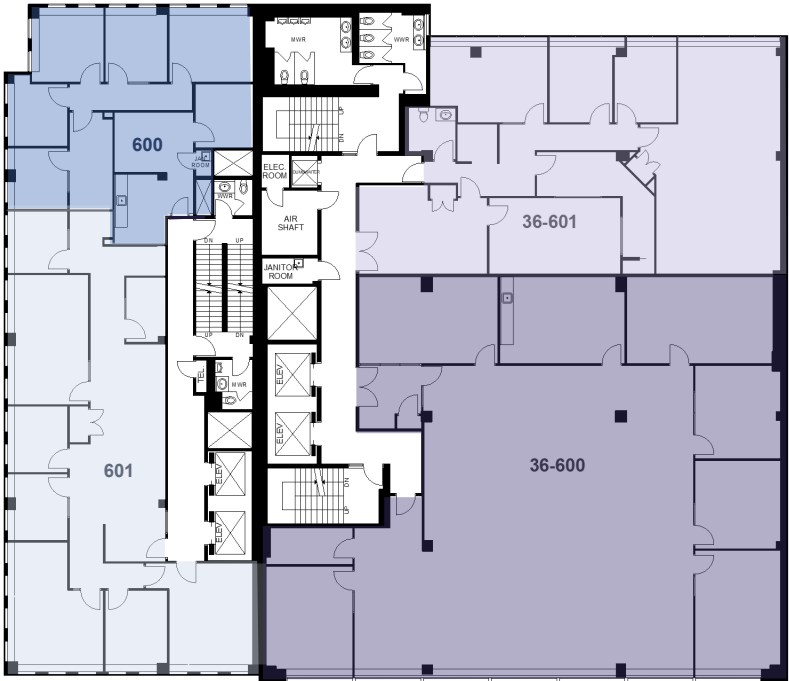
34 King Street  
Suite 500  
3,742 sf



36 King Street  
Suite 500  
8,089 sf

6<sup>th</sup> Floor

34 King Street  
Suite 600  
1,610 sf  
  
Suite 601  
2,143 sf



36 King Street  
Suite 600  
5,028 sf  
  
Suite 601  
2,731 sf

7<sup>th</sup> Floor

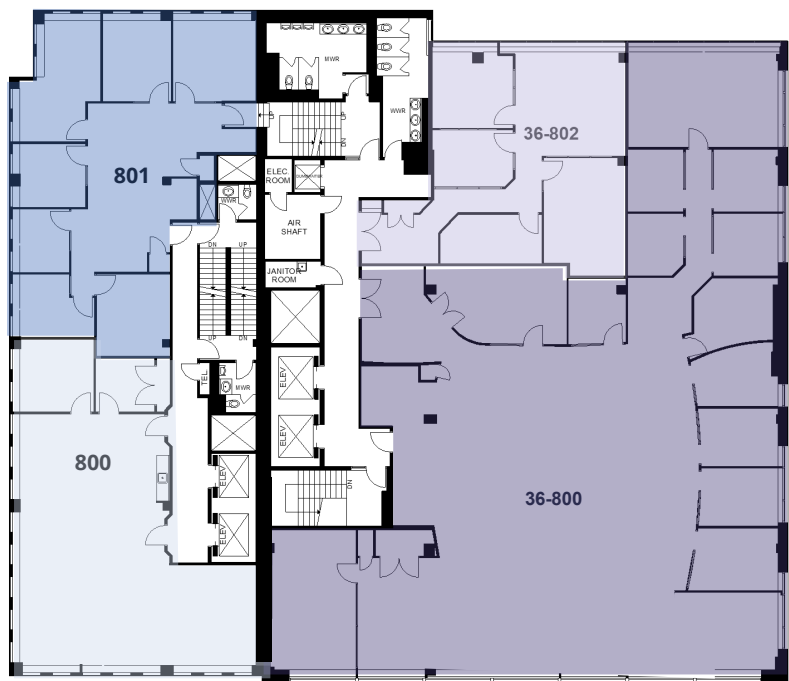
34 King Street  
Suite 700  
1,858 sf



36 King Street  
Suite 700  
5,423 sf

8<sup>th</sup> Floor

34 King Street  
Suite 800  
1,933 sf  
  
Suite 801  
1,819 sf

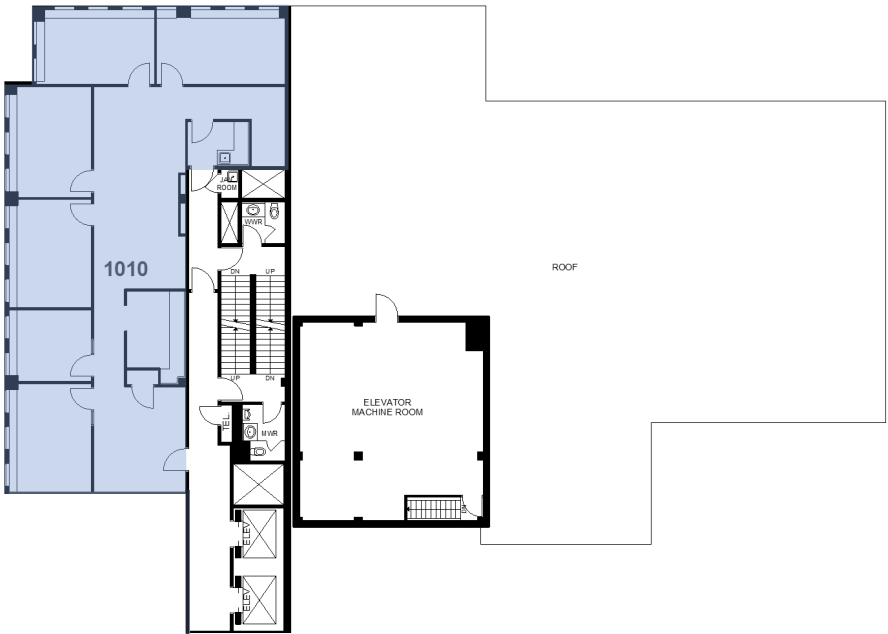


36 King Street  
Suite 800  
6,674 sf  
  
Suite 802  
1,485 sf

10<sup>th</sup> Floor

34 King Street

Suite 1010  
2,342 sf

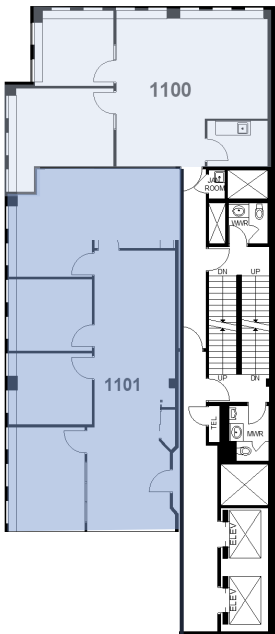


11<sup>th</sup> Floor

34 King Street

Suite 1100  
997 sf

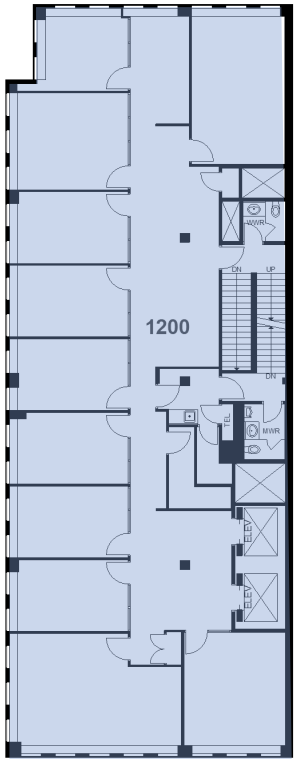
Suite 1101  
1,503 sf



12<sup>th</sup> Floor

34 King Street

3,726 sf





## 34-36 King Street East

## Interior Photos

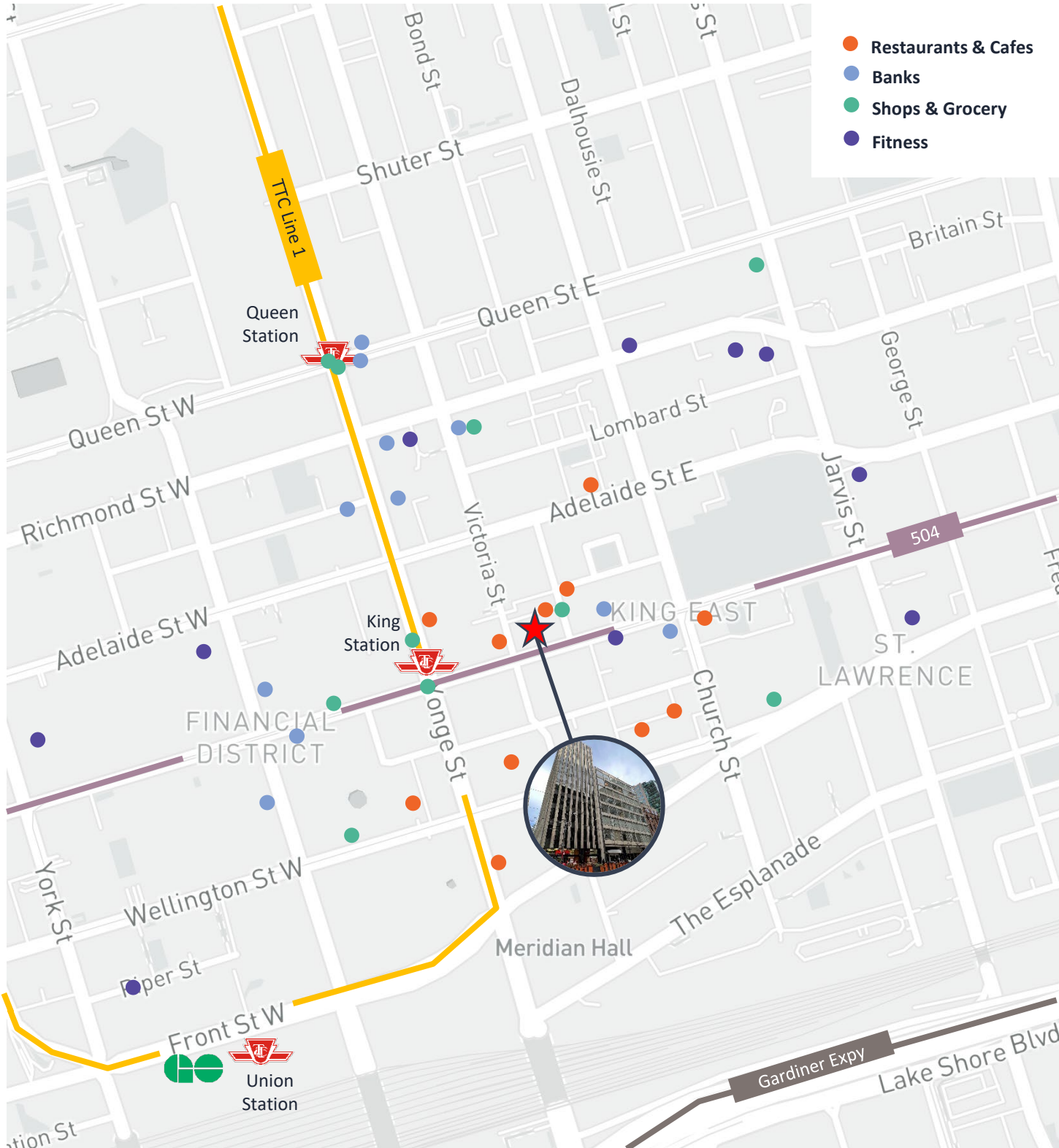




100 Walk score

100 Transit score

93 Bike score





34-36 King Street East

Office space for lease



Want to plan a tour?  
Contact us for more information.

**Andrew Boyd\***

Principal  
+1 416 673 4052  
andrew.boyd@avisonyoung.com

**Michael Stevens\***

Sales Representative  
+1 647 696 4545  
michael.stevens@avisonyoung.com

**Brett Armstrong\***

Principal and Practice Leader  
+1 416 673 4041  
brett.armstrong@avisonyoung.com

**Yris Van der Ploeg\***

Sales Representative  
+1 416 673 4048  
yris.vanderploeg@avisonyoung.com

\*Sales Representative

**avisonyoung.ca**

© 2024 Avison Young Commercial Real Estate Services, LP, All rights reserved. E. & O.E.: The information contained herein was obtained from sources which we deem reliable and, while thought to be correct, is not guaranteed by Avison Young

