

1751 Second Avenue

Suite AZ-5

Catherine Courtney 646-734-4353

\$6000 / 1000ft² - Medical (Professional) Office (Upper East Side)

91st street / Between 3rd and 2nd Avenues.

Luxury concierge building.

Street entrance on pedestrian non-traffic street. Lawns, gardens, trees. park.

New 1000 Sf Suite: Built As 4 Offices + Waiting Room + Bathroom.

Each office has: A/C, Parquet Floor, Windows, Sun. Soundproof Walls, Solid Wood Doors.

Ofc #1:11x11 (122 Sf).

Ofc #2:10X11 (110 Sf).

Ofc #3:13 1/2 X 14. (190 sf), Closet.

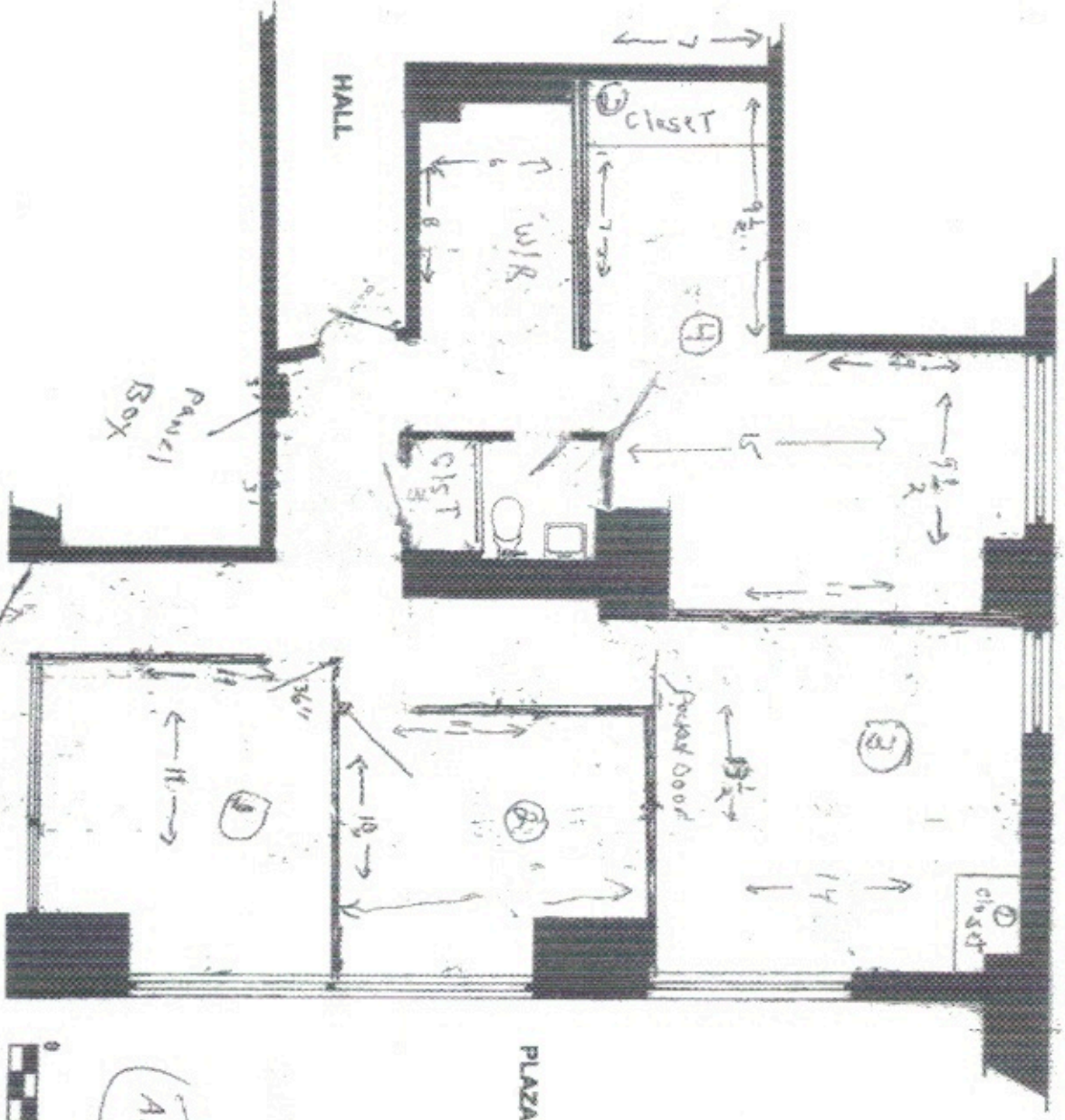
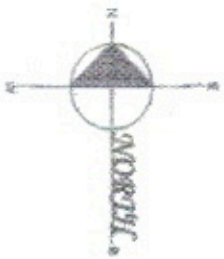
Ofc #4: L-shaped (190 Sf), Closet.

Suitable For Medical, Psychology, Speech Pathology and Other Professional Uses, as well as Standard Office Use.

Asking \$6,000 For Entire Suite.

Call Catherine 646-734-4353.

NOTE:
As per 4, 12, 18 survey.
All conditions and dimensions
must be field verified.



1751 Second Avenue

Entrance PLAZA

Commercial Space GF-1

A25