



SALE

This premier retail center is located prominently along Grand River Avenue at the entrance to Genoa Medical Center. Comprised of more than 21,000 square feet, this property features a 5,000 square foot restaurant anchor space, eight in-line retail suites and a secondary endcap of an additional 5,000 square feet for retail or restaurant use.

Adjacent to the Trinity Health center and surrounded by both medical and professional offices this property offers uncompromised visibility, strong traffic counts and an incredible tenant mix throughout the medical campus.

THE WELL CHURCH

**2394 Genoa Business Park Drive
Birghton, MI 48114**

Call for Price

**Land Size: 2.23 Acres
Property Size: 21,000 Sq. Ft.
Year Built: 2008**

Contact:

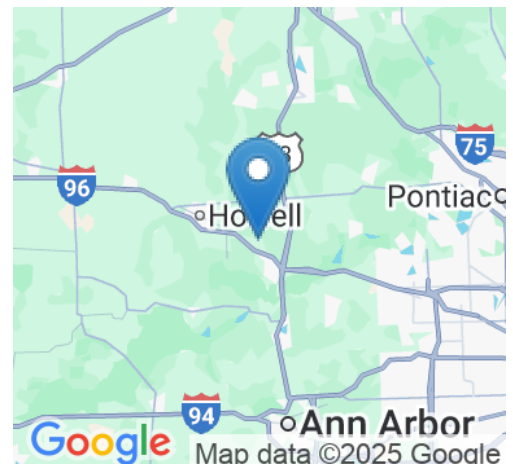
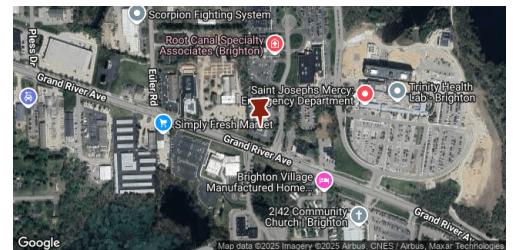
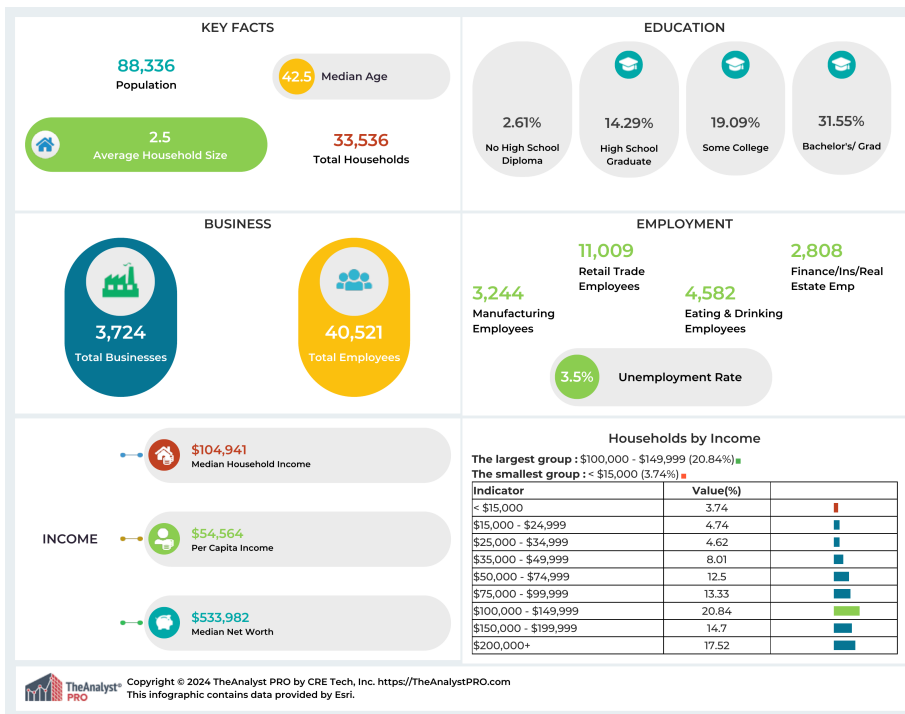
313.312.5764

TREVOR BROOKS

License: 6501374378
t.brooks@kwcommercial.com



SM



This information has been obtained from sources believed reliable. We have not verified it and make no guarantee, warranty or representation about it. Any projections, opinions, assumptions or estimates used are for example only and do not represent the current or future performance of the property. You and your advisors should conduct a careful, independent investigation of the property to determine to your satisfaction the suitability of the property for your needs. Photos herein are the property of their respective owners and use of these images without the express written consent of the owner is prohibited.

Contact:

313.312.5764

TREVOR BROOKS

License: 6501374378

t.brooks@kwcommercial.com