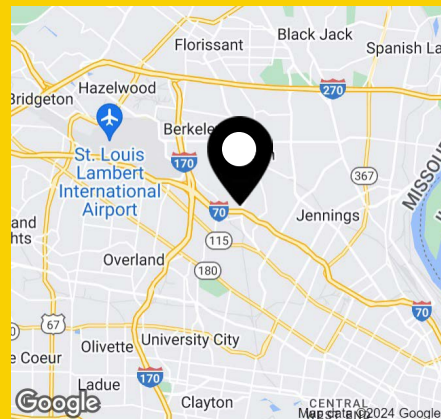




Offering Summary - Building 3

Lease Rate:	\$5.20/SF, NNN
Available Space:	32,400 SF
Outside Storage:	Contact Broker for Details

- 16' clear height
- 3 dock doors
- 1 drive-in door
- 100% climate controlled



Get more information

Ben Cahill, SIOR, CCIM

Principal
D 314 785 7637
ben.cahill@avisonyoung.com

Dan Cahill, CCIM

Senior Vice President
D 314 785 7639
dan.cahill@avisonyoung.com

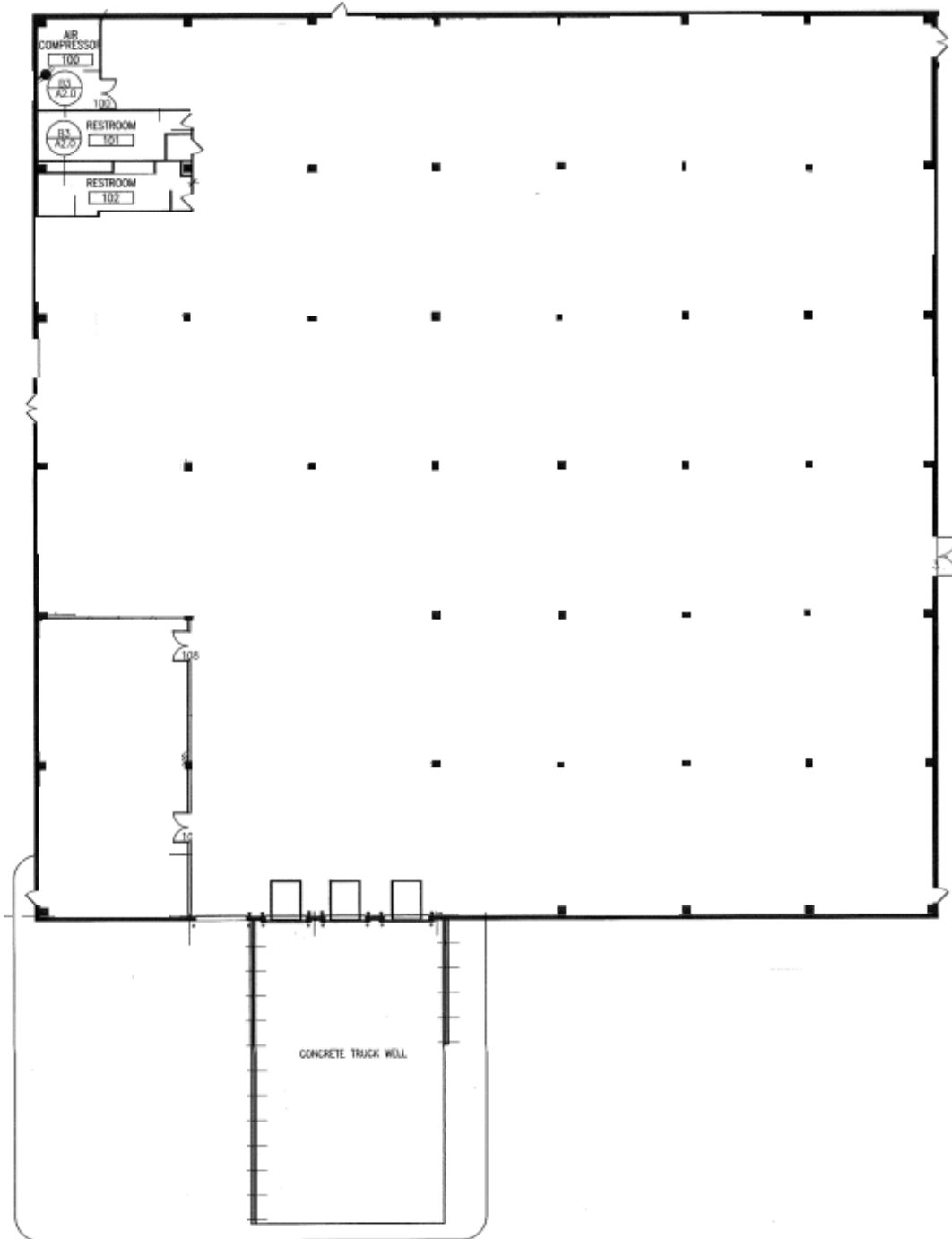
Ford Maune

Associate
D 314 785 7640
ford.maune@avisonyoung.com

Ben Albers, SIOR

Senior Vice President
D 314 785 7695
ben.albers@avisonyoung.com

Building 3 Floorplan



Get more information

Ben Cahill, SIOR, CCIM

Principal
D 314 785 7637
ben.cahill@avisonyoung.com

Dan Cahill, CCIM

Senior Vice President
D 314 785 7639
dan.cahill@avisonyoung.com

Ford Maune

Associate
D 314 785 7640
ford.maune@avisonyoung.com

Ben Albers, SIOR

Senior Vice President
D 314 785 7695
ben.albers@avisonyoung.com