



# For Sublease

301 & 331 E. Evelyn Ave, Mountain View

± 72,552 SF Available

# MOUNTAIN VIEW CORPORATE CENTER

Rare Class A+ tech sublease opportunity located less than one mile from Downtown Mountain View that offers immediate occupancy in a multi-modal campus setting with expansion capability. High-quality finishes throughout, extensive amenities, and abundant nearby retail, making it ideal for companies seeking sophisticated office space with unmatched convenience.



**±67,000 SF**

301 E. Evelyn Ave



**±5,552 SF**

331 E. Evelyn Ave



**May 2029**

Lease Expiration Date





# 301 E. Evelyn Ave

±67,000 SF

Class A+ Interiors

Ideal for an Advanced Technologies/Hardware/Tech User: High Ceilings, Brand-New Build-Out, Light-Filled Spaces

Power: 2,000 Amps at 480/277V

Ground Floor Cafe/Bar Area for All-Day Convenience

On-Site Fitness Center

Abundant Balconies Throughout the Building

Some Furniture Available

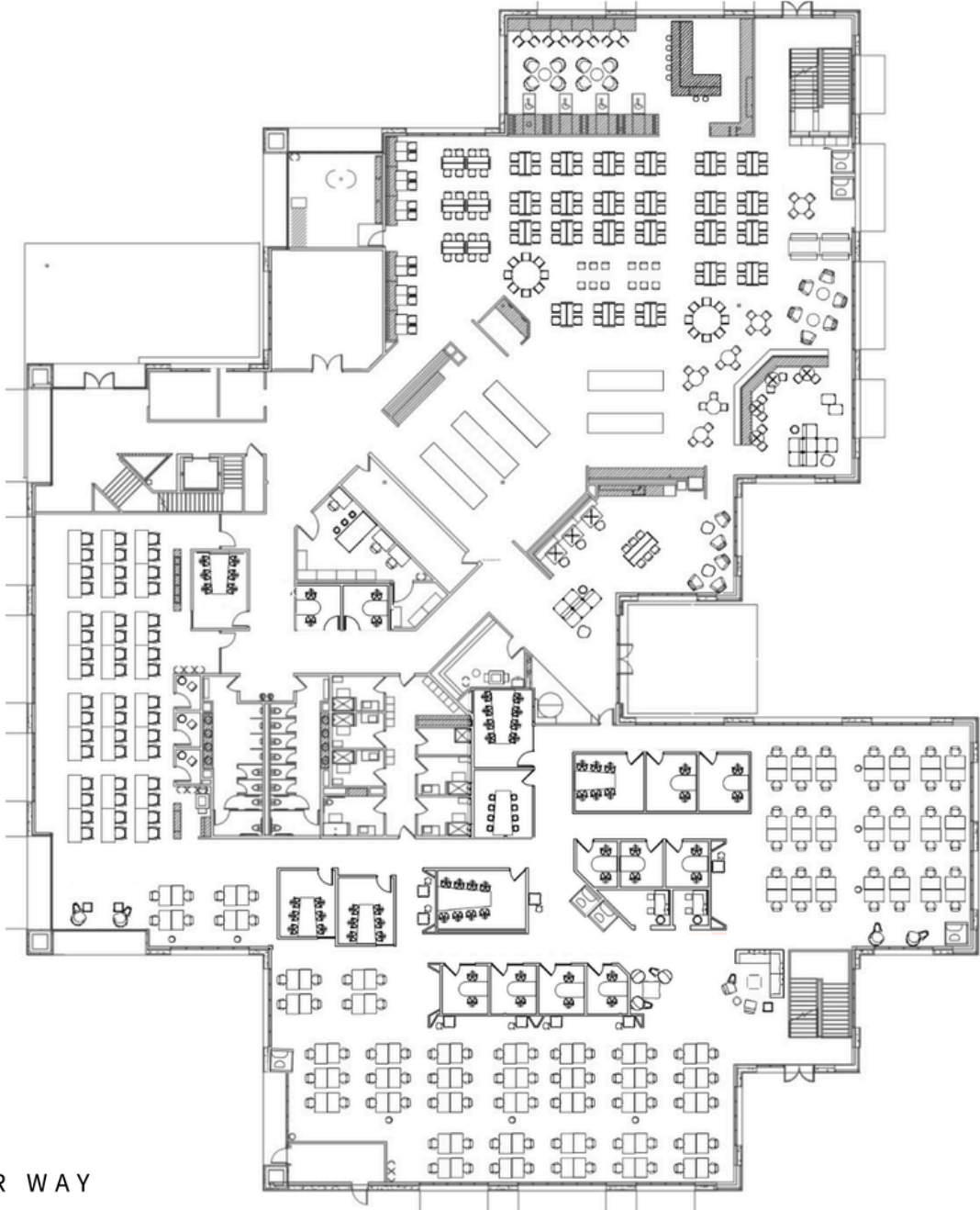
Available Immediately

Term Through May 31, 2029



301 E. Evelyn Ave, Mountain View  
1st Floor

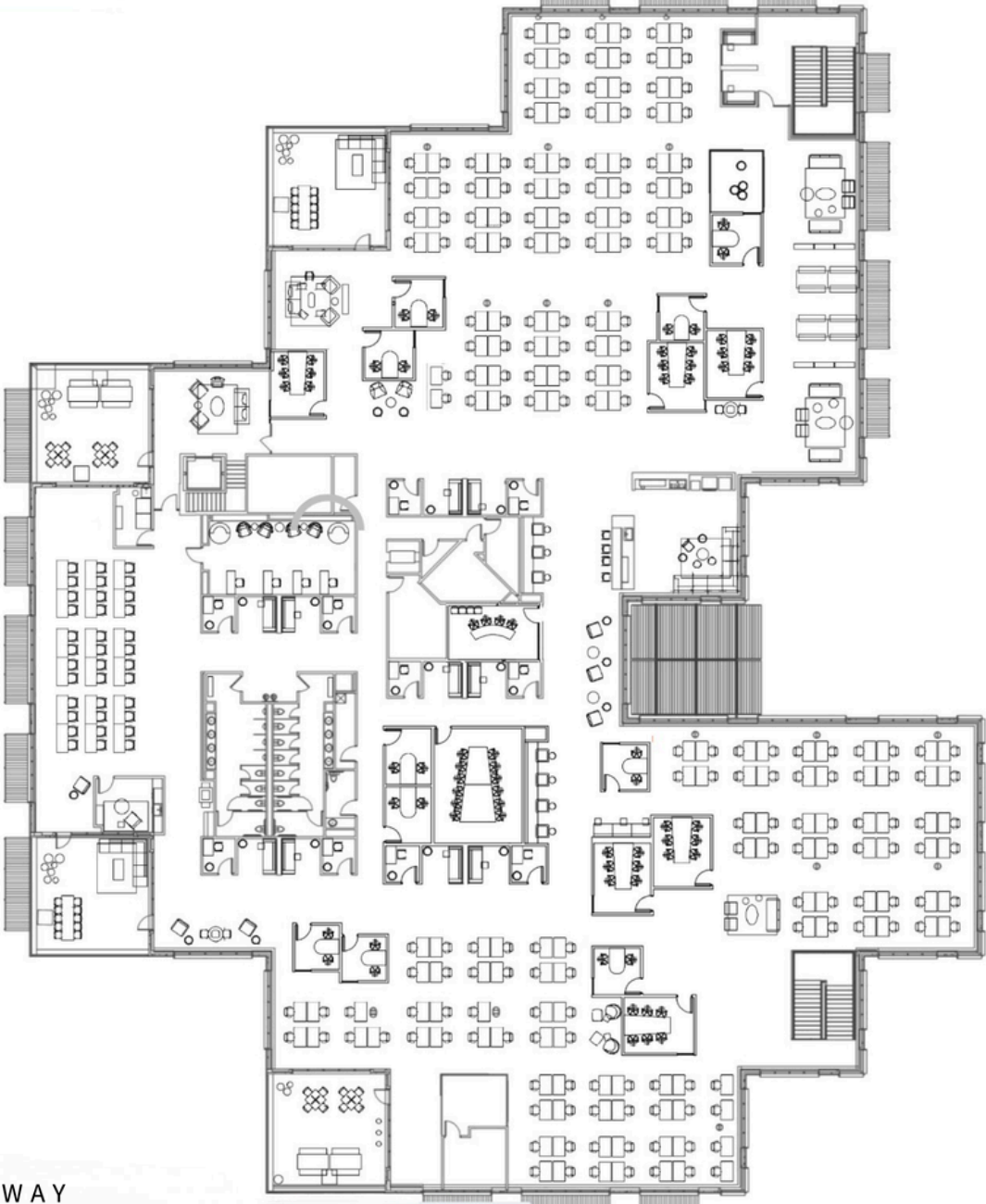
± 33,500 SF



\*\*Furniture Not Available

301 E. Evelyn Ave, Mountain View  
2nd Floor

± 33,500 SF



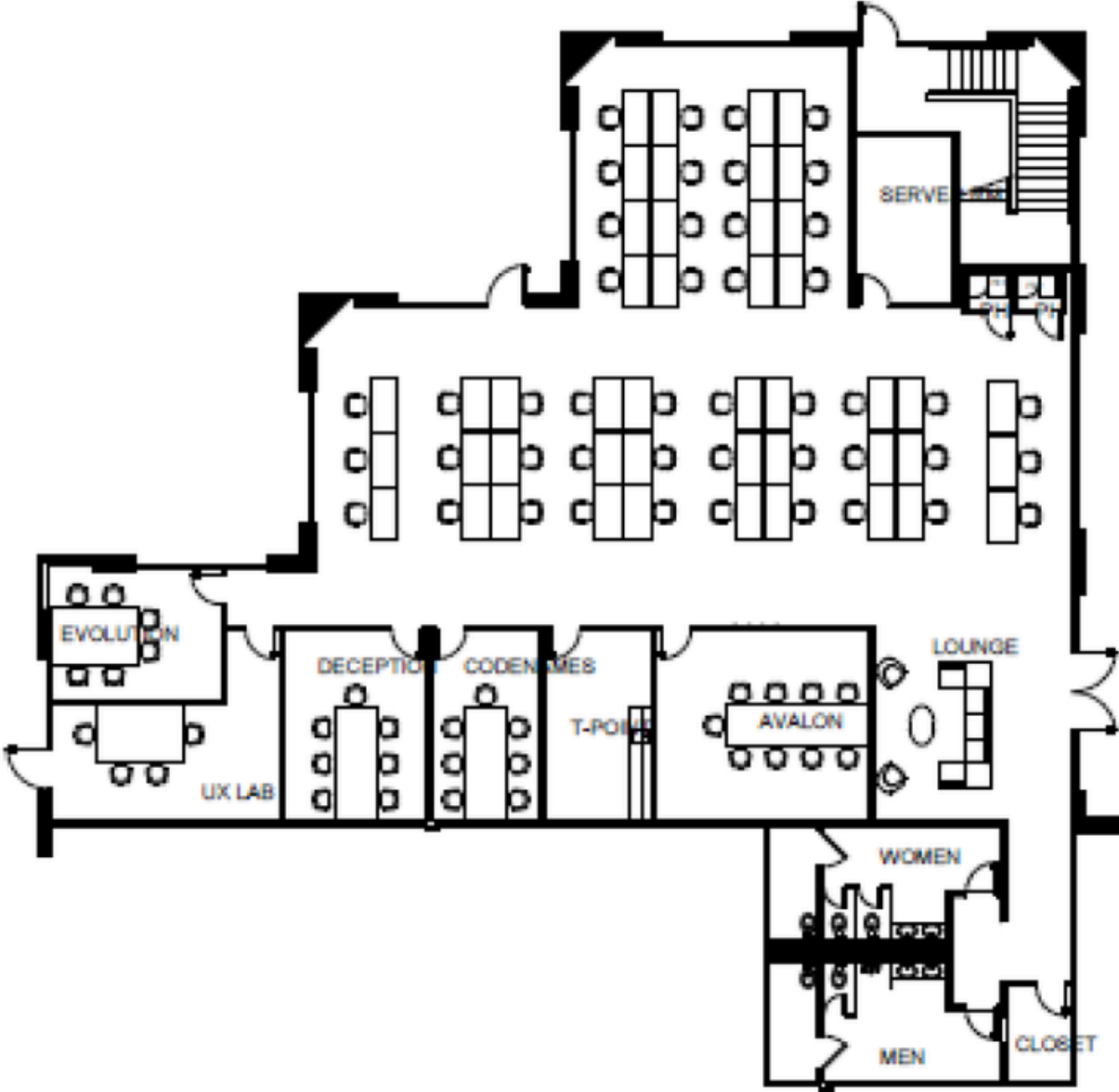


301 E. Evelyn Ave




331 E. Evelyn Ave, Mountain View  
1st Floor

± 5,552 SF





 **JLL** SEE A BRIGHTER WAY

**Derek Johnson**  
CA Lic #01856260  
Derek.Johnson@jll.com  
+1 (415) 533 3049

**Lucy Walsh**  
CA Lic #02215685  
Lucy.Walsh@jll.com  
+1 (415) 261 7822

Although information has been obtained from sources deemed reliable, JLL does not make any guarantees, warranties or representations, express or implied, as to the completeness or accuracy as to the information contained herein. Any projections, opinions, assumptions or estimates used are for example only. There may be differences between projected and actual results, and those differences may be material. JLL does not accept any liability for any loss or damage suffered by any party resulting from reliance on this information. If the recipient of this information has signed a confidentiality agreement with JLL regarding this matter, this information is subject to the terms of that agreement. ©2025. Jones Lang LaSalle IP, Inc. All rights reserved.