

FOR LEASE // RETAIL

# 2155

CORAL WAY, MIAMI, FL

**5,046 RSF RETAIL SPACE**  
NEXT TO TRUIST

**ON HARD CORNER**  
ON CORAL WAY

**5,046 RSF AVAILABLE**  
**FRONTING CORAL WAY**



This document/email has been prepared by Colliers for advertising and general information only. Colliers makes no guarantees, representations or warranties of any kind, expressed or implied, regarding the information including, but not limited to, warranties of content, accuracy and reliability. Any interested party should undertake their own inquiries as to the accuracy of the information. Colliers excludes unequivocally all inferred or implied terms, conditions and warranties arising out of this document and excludes all liability for loss and damages arising there from. This publication is the copyrighted property of Colliers and /or its licensor(s). © 2023. All rights reserved. This communication is not intended to cause or induce breach of an existing listing agreement. Colliers International Florida, LLC.

**Pablo Camposano**  
Vice President  
+1 786 210 2730  
pablo.camposano@colliers.com

**Dave Preston**  
Executive Vice President  
+1 786 384 1320  
dave.preston@colliers.com

# PROPERTY HIGHLIGHTS



5,046 RSF AVAILABLE



LOCATED ON FULLY SIGNALIZED INTERSECTION



+32,000 VPD ON CORAL WAY



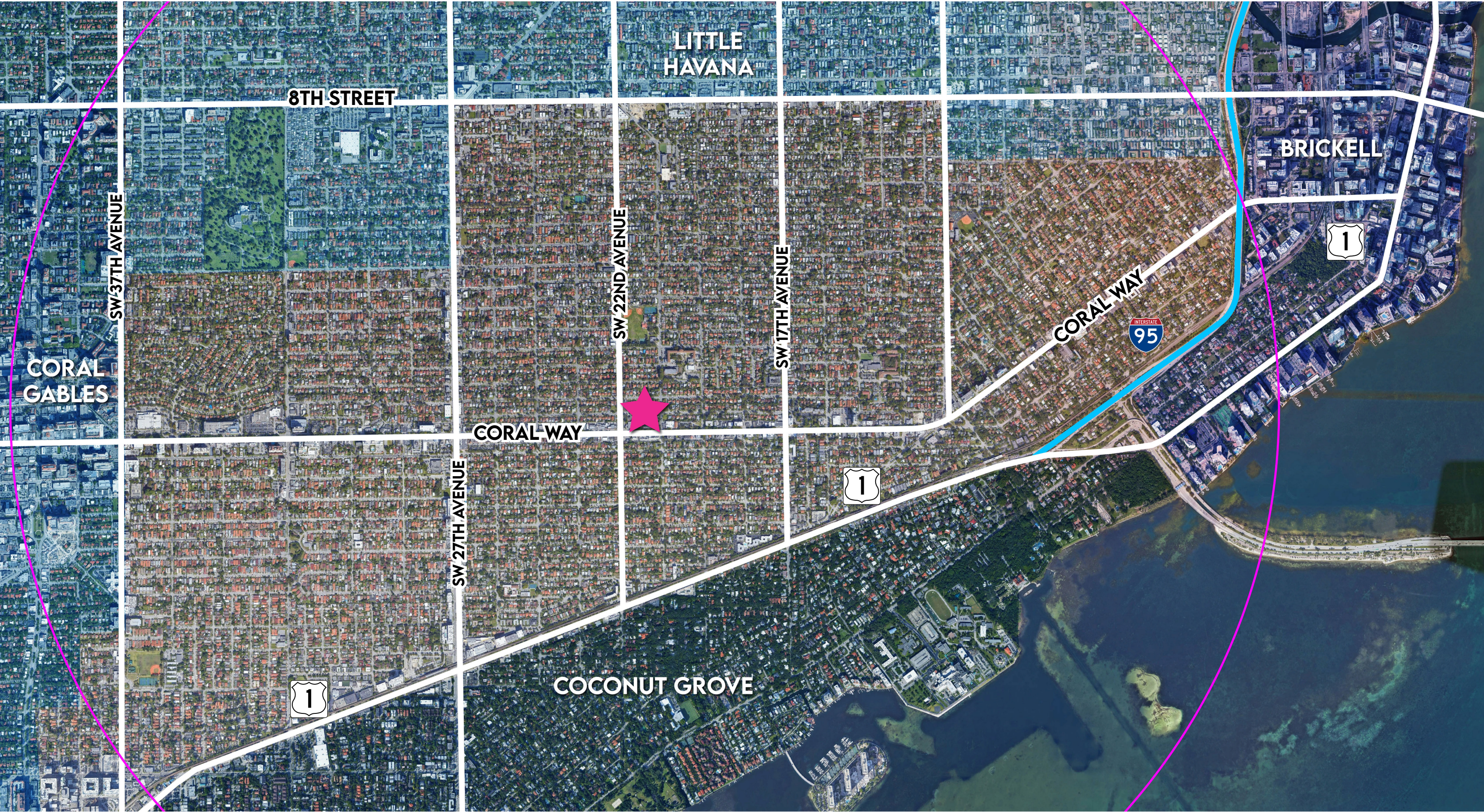
2.89/1,000 RSF PARKING RATIO



5,046 RSF FRONTING CORAL WAY



TRUCKS USE RIGHT LANE



# AREA RETAILERS & DEMOGRAPHICS

3 MILE RADIUS



Current Population (2023)  
**269,291**



Average HH Income (2023)  
**\$84,585**



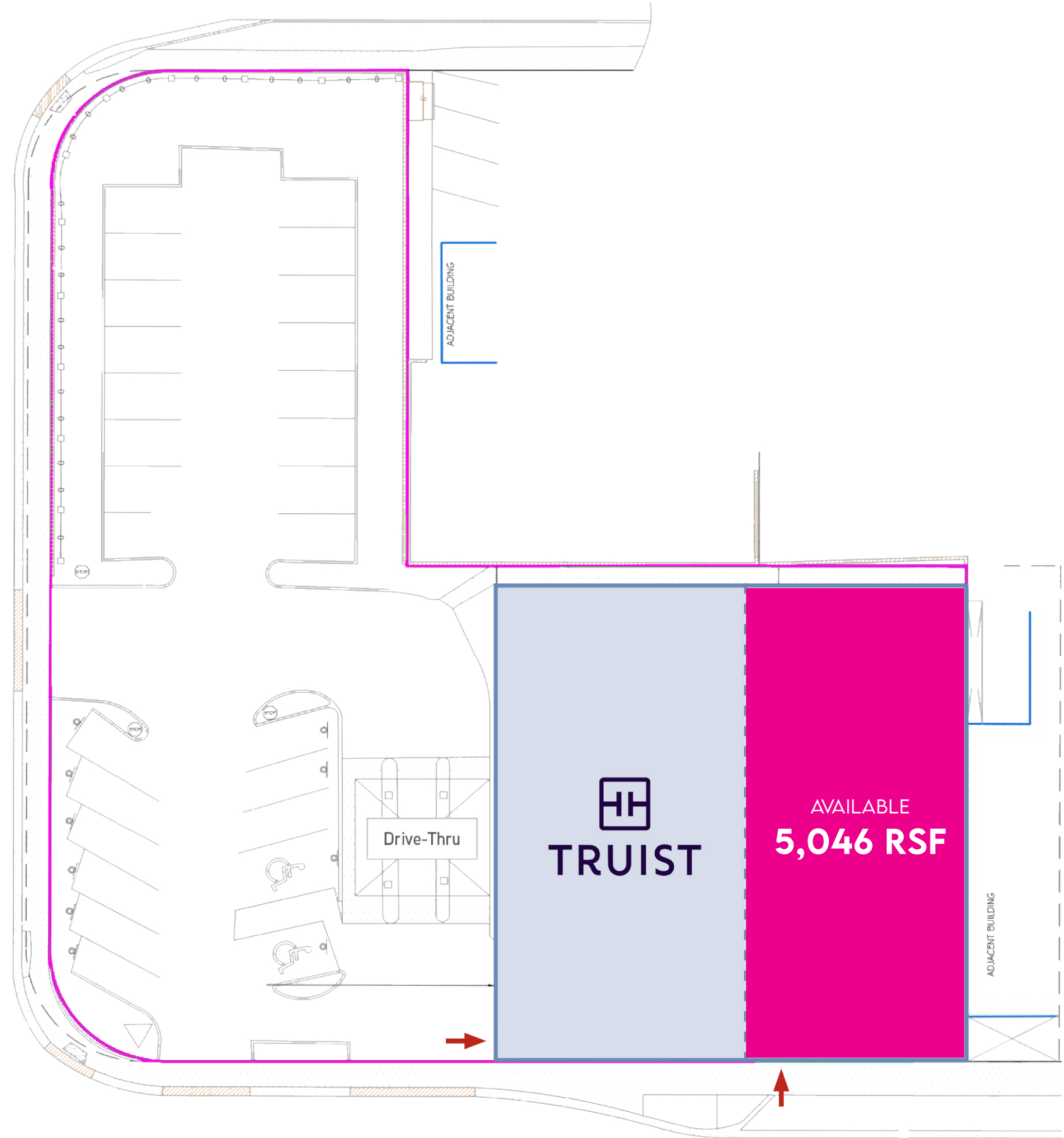
Median Home Value (2023)  
**\$439,021**



Employees (2023)  
**202,074**

# AVAILABLE SPACE

SW 22<sup>nd</sup> Avenue



SW 22<sup>nd</sup> Street  
Coral Way

FOR LEASE // RETAIL

2155

CORAL WAY, MIAMI, FL

**Pablo Camposano**

Vice President

+1 786 210 2730

[pablo.camposano@colliers.com](mailto:pablo.camposano@colliers.com)

**Dave Preston**

Executive Vice President

+1 786 384 1320

[dave.preston@colliers.com](mailto:dave.preston@colliers.com)

Colliers