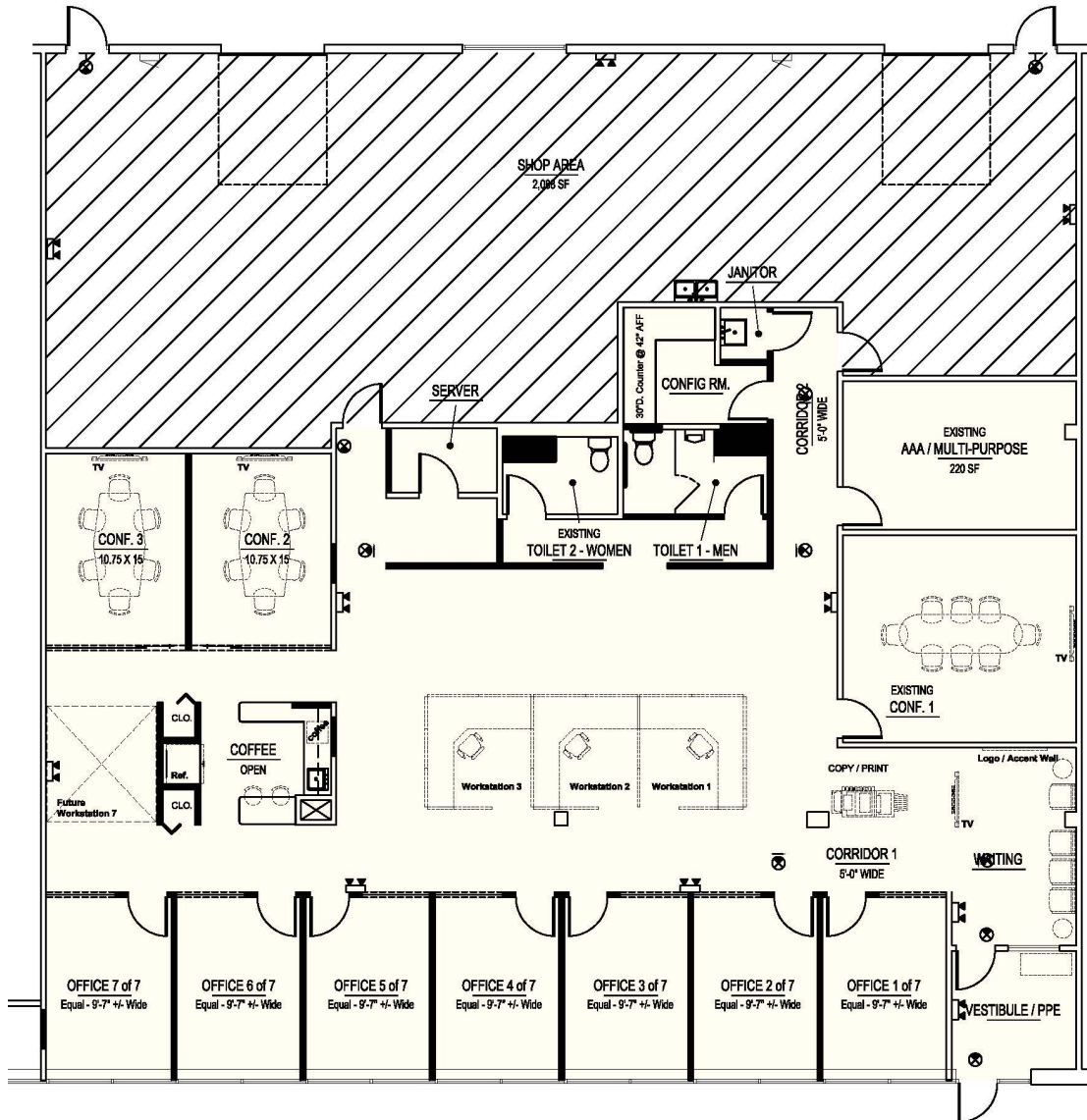


Leased & Managed By:

**ARI-EL**

**TECHTRON CENTRE**

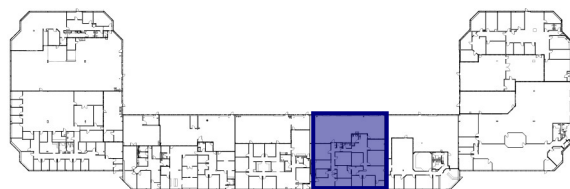
23399 Commerce Drive, Suite B-4, Farmington Hills, MI 48335



## UNIT HIGHLIGHTS

**Total Area: Approx. 6,440 SF**  
**Office Area: Approx. 4,352 SF**  
**Overhead Door: Two 12' Grade Level**

## LOCATION OVERVIEW



[www.ari-el.com](http://www.ari-el.com)



29355 Northwestern Hwy., Suite 301, Southfield, MI 48034



(248) 557-3800