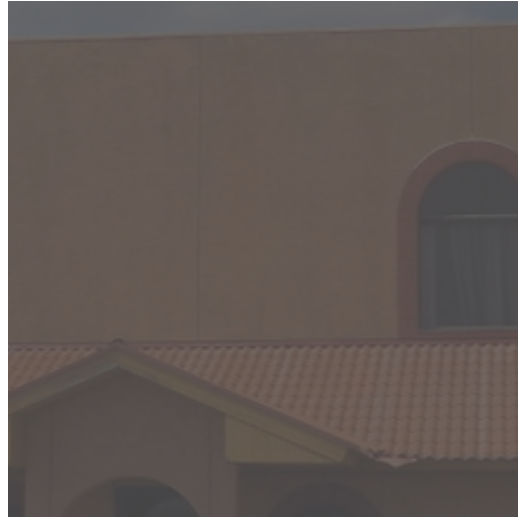


OFFICE BUILDING FOR LEASE

**13567**  
**FM 3067**



**13785**

FM 3067

LA FERIA, TX



2,240 SF - Two Story Office that was formerly a Real Estate Office and more recently a Construction Office. Office is in good condition and contains Reception area, two offices, mini kitchen and upstairs conference room with restroom and shower. Floor plan attached. Great location for a Construction Office or general administrative use.



FOR LEASE  
13567 FM 3067

## EXECUTIVE SUMMARY



### OFFERING SUMMARY

Lease Rate:	\$2,400.00 SF/yr (Gross)
Building Size:	2,240 SF
Available SF:	2,240 SF
Lot Size:	0.5 Acres
Zoning:	Commercial
Market:	Rio Grande Valley
Submarket:	La Feria

### PROPERTY OVERVIEW

2,240 SF - Two Story Office that was formerly a Real Estate Office and more recently a Construction Office. Office is in good condition and contains Reception area, two offices, mini kitchen and upstairs conference room with restroom and shower. Floor plan attached. Great location for a Construction Office or general administrative use.

### PROPERTY HIGHLIGHTS

FOR LEASE  
13567 FM 3067

**ADDITIONAL PHOTOS**



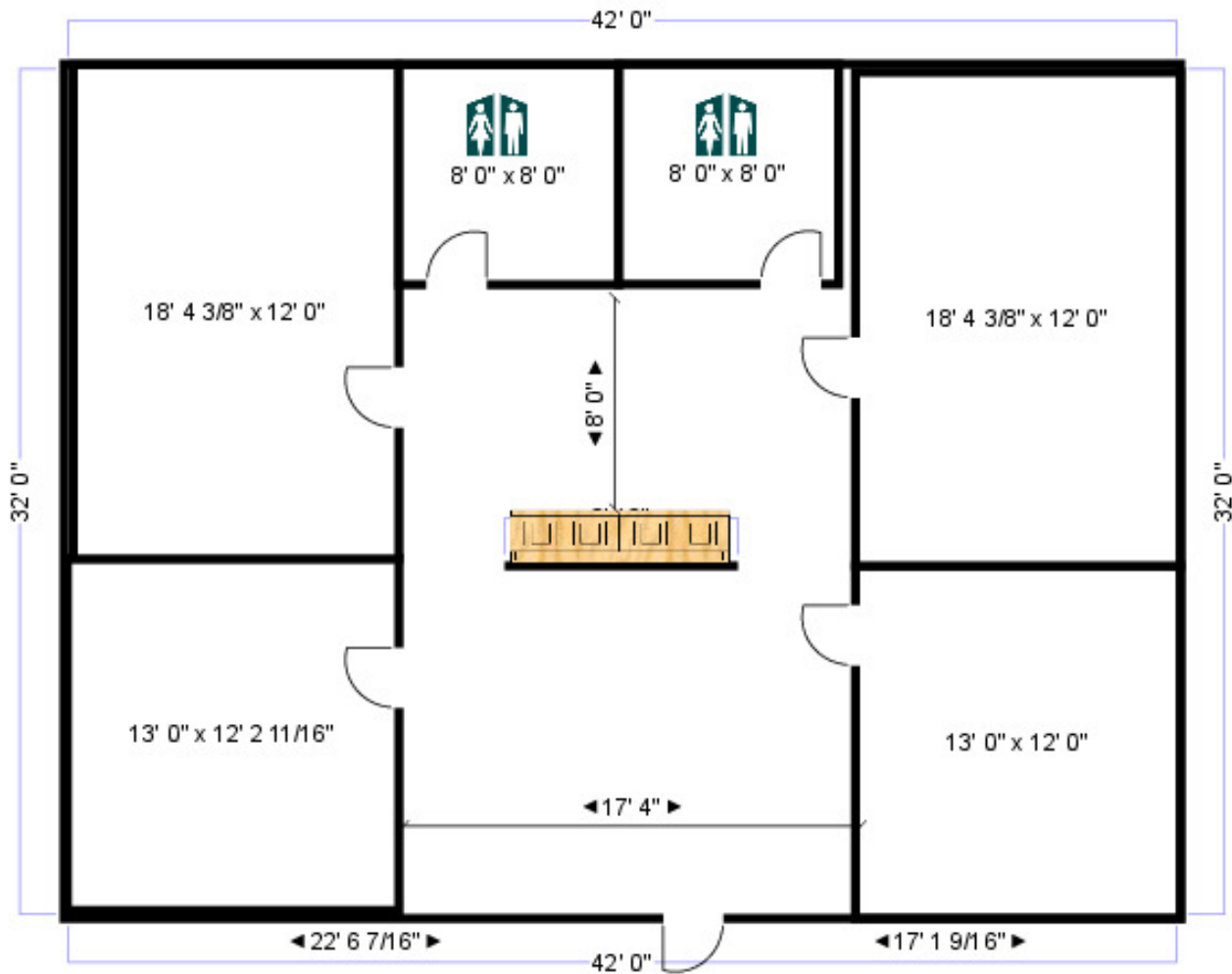
FOR LEASE  
13567 FM 3067

**ADDITIONAL PHOTOS**



FOR LEASE  
13567 FM 3067

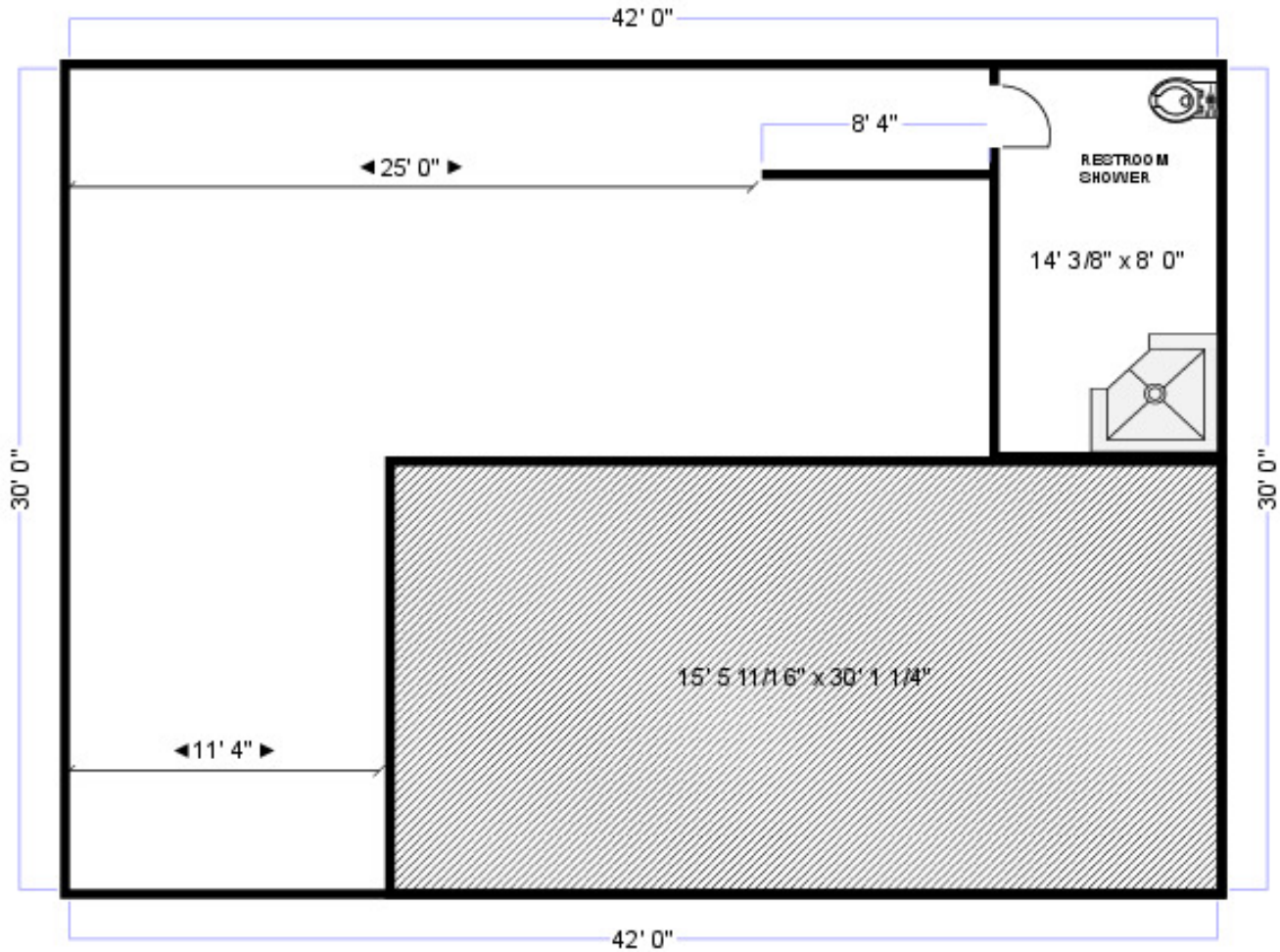
**FLOOR PLANS**



13785 FM 3067  
LA FERIA, TEXAS 78559  
+/- 2,240 SF  
FIRST FLOOR

FOR LEASE  
13567 FM 3067

**FLOOR PLANS**



13785 FM 3067  
La Feria, Texas 78559  
+/- 2,240 SF  
Second Floor

FOR LEASE  
13567 FM 3067

**LOCATION MAP**



Google Map data ©2023 Imagery ©2023 Airbus, Maxar Technologies, Texas General Land Office, U.S. Geological Survey



Google Map data ©2023 INEGI

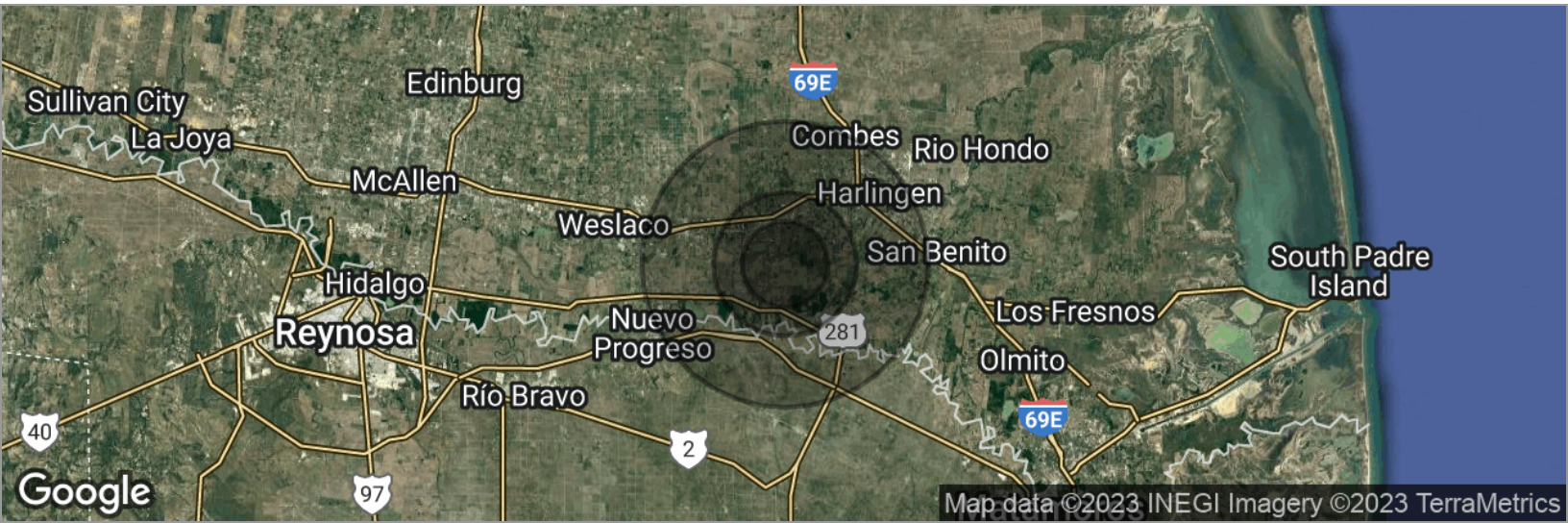


**CINDY HOPKINS REAL ESTATE**  
222 E Van Buren, Suite 617 // Harlingen, TX 78550  
956.778.3255 // [cindy@chopkinsrealestate.com](mailto:cindy@chopkinsrealestate.com)

The information contained herein was obtained from sources deemed reliable; however, CHRE makes no guaranties, warranties or representations to the completeness or accuracy thereof. The presentation of this real estate information is subject to errors; omissions; change of price; prior sale or lease; or withdrawal without notice.

FOR LEASE  
13567 FM 3067

## DEMOGRAPHICS MAP



### POPULATION

	3 MILES	5 MILES	10 MILES
Total population	7,348	22,826	141,562
Median age	33.7	36.8	33.1
Median age (Male)	30.8	36.1	32.8
Median age (Female)	35.6	37.1	35.2

### HOUSEHOLDS & INCOME

	3 MILES	5 MILES	10 MILES
Total households	2,747	8,729	52,357
# of persons per HH	2.7	2.6	2.7
Average HH income	\$47,776	\$52,916	\$47,744
Average house value	\$88,464	\$92,340	\$89,704

### ETHNICITY (%)

	3 MILES	5 MILES	10 MILES
Hispanic	88.3%	87.5%	87.8%

### RACE (%)

	3 MILES	5 MILES	10 MILES
White	85.0%	83.9%	82.4%
Black	0.2%	0.1%	0.7%
Asian	0.7%	1.5%	0.9%
Hawaiian	0.0%	0.0%	0.1%
American Indian	0.0%	0.0%	0.2%
Other	7.0%	6.3%	7.4%

\* Demographic data derived from 2020 ACS - US Census