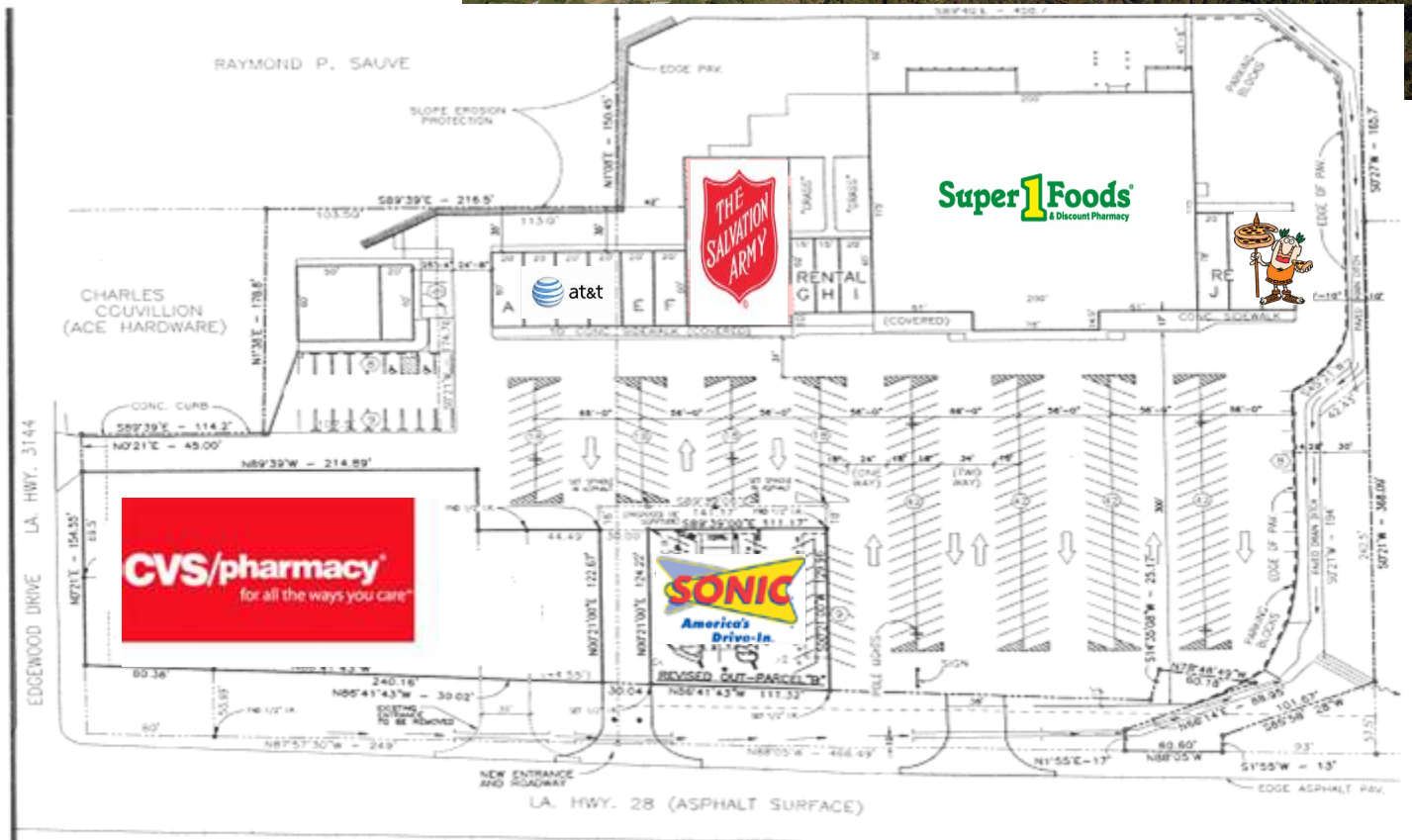


## An aerial photograph of a Super Foods grocery store and its extensive parking lot. The store is a long, single-story building with a green and yellow facade. The 'Super Foods' logo is prominently displayed in green. To the right of the main store, there is a section labeled 'CENTRAL INSURERS' and another with a 'Fruit &amp; Veggie' sign. The parking lot is large and paved, filled with numerous cars of various colors and models. A white pickup truck is parked in the foreground, and a black SUV is parked near the center. The background shows a line of trees and a clear sky.



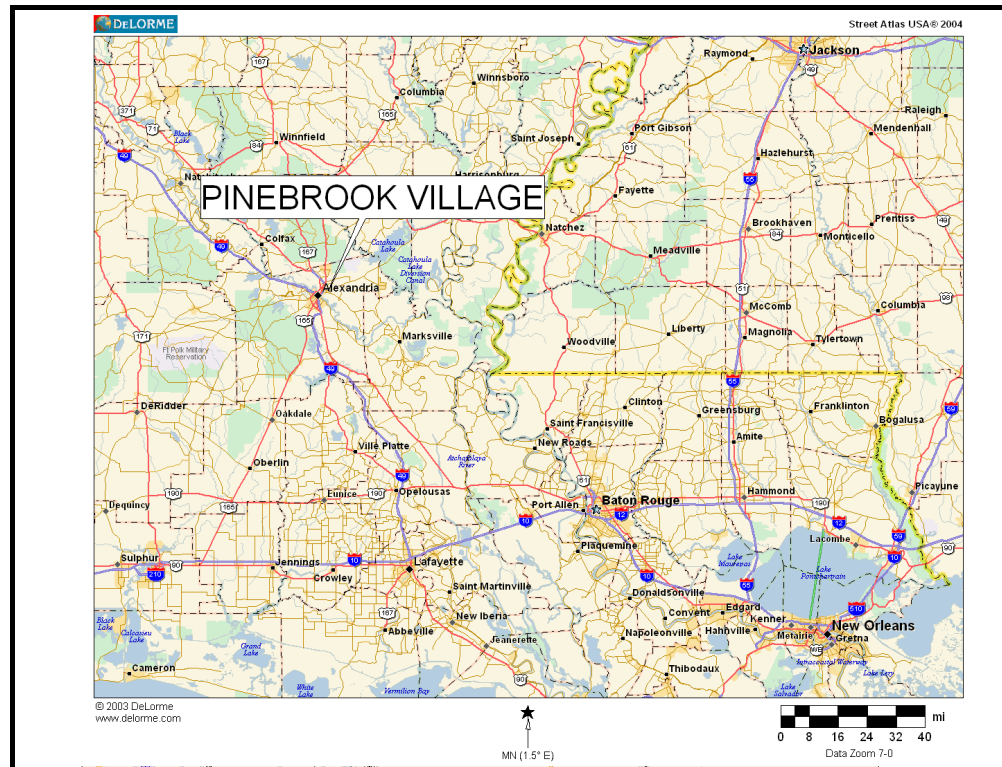
# PINEBROOK VILLAGE, PINEVILLE, LA

- Premiere High Traffic Location
- Established Retail Market
- High Parking Ratio

GLA 105,316 sq. ft.

## TENANTS:

SUPER 1	35,000 sq. ft.
Salvation Army Thrift	8,640 sq. ft.
Phoenix Restaurant	4,200 sq. ft.
<b>AVAILABLE</b>	1,200 sq. ft.
AT&T Wireless	2,100 sq. ft.
<b>AVAILABLE</b>	<b>1,500 sq. ft.</b>
Nail Salon	1,200 sq. ft.
H&R Block	1,800 sq. ft.
Fantastic Sam's	1,200 sq. ft.
Insurance	1,600 sq. ft.
Little Caesars	2,400 sq. ft.
Nutrition	1,200 sq. ft.



Area 1: 1.0 Mile Radius 4,162	Area 2: 3.0 Mile Radius 20,175	Area 3: 5.0 Mile Radius 50,883
----------------------------------	-----------------------------------	-----------------------------------

## PINEBROOK VILLAGE

3123 Hwy 28 E  
PINEVILLE, LA