



OFFICE FOR LEASE

Office Available On Santa Fe Drive

1340 S Santa Fe Dr | Denver, CO 80223



CONTACT:

BRAD GILPIN

SENIOR VICE PRESIDENT

303.512.1196

bgilpin@uniqueprop.com

UNIQUE PROPERTIES

400 S. BROADWAY

DENVER, CO 80209

(p) 303.321.5888

(f) 303.321.5889

WWW.UNIQUEPROP.COM



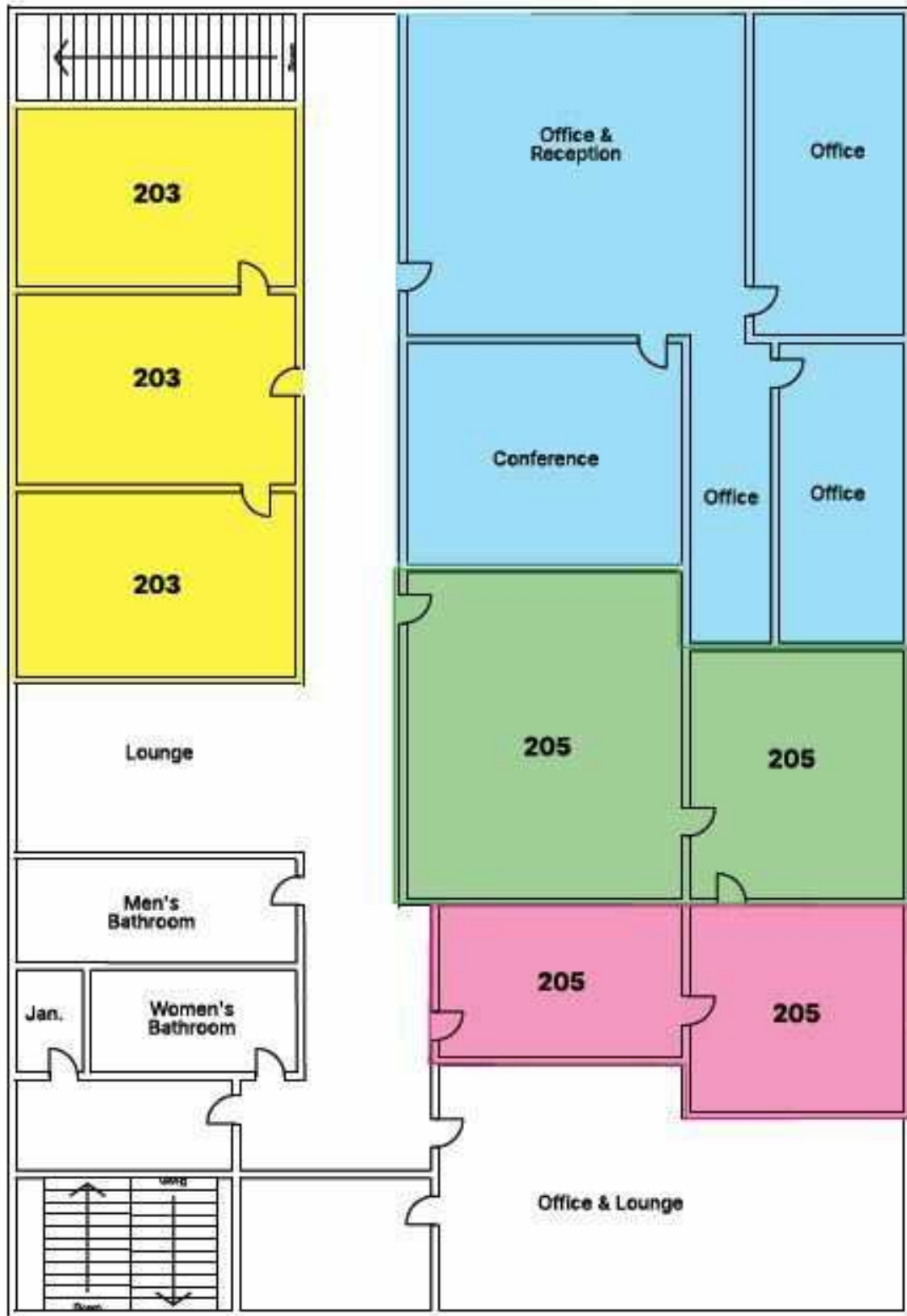
1340 S SANTA FE

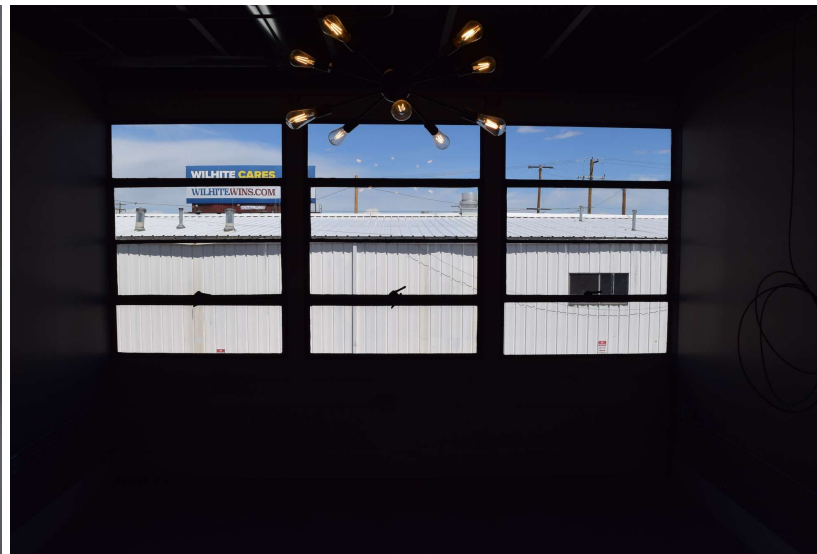
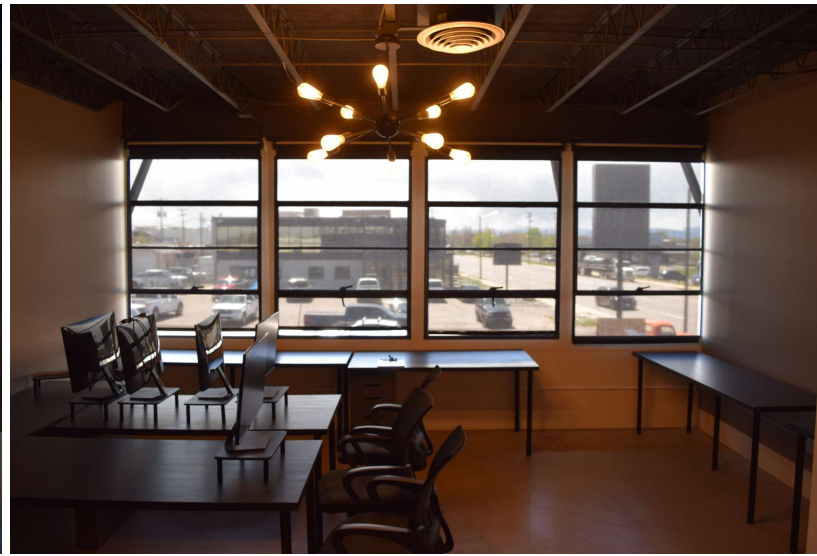
OFFERING SUMMARY

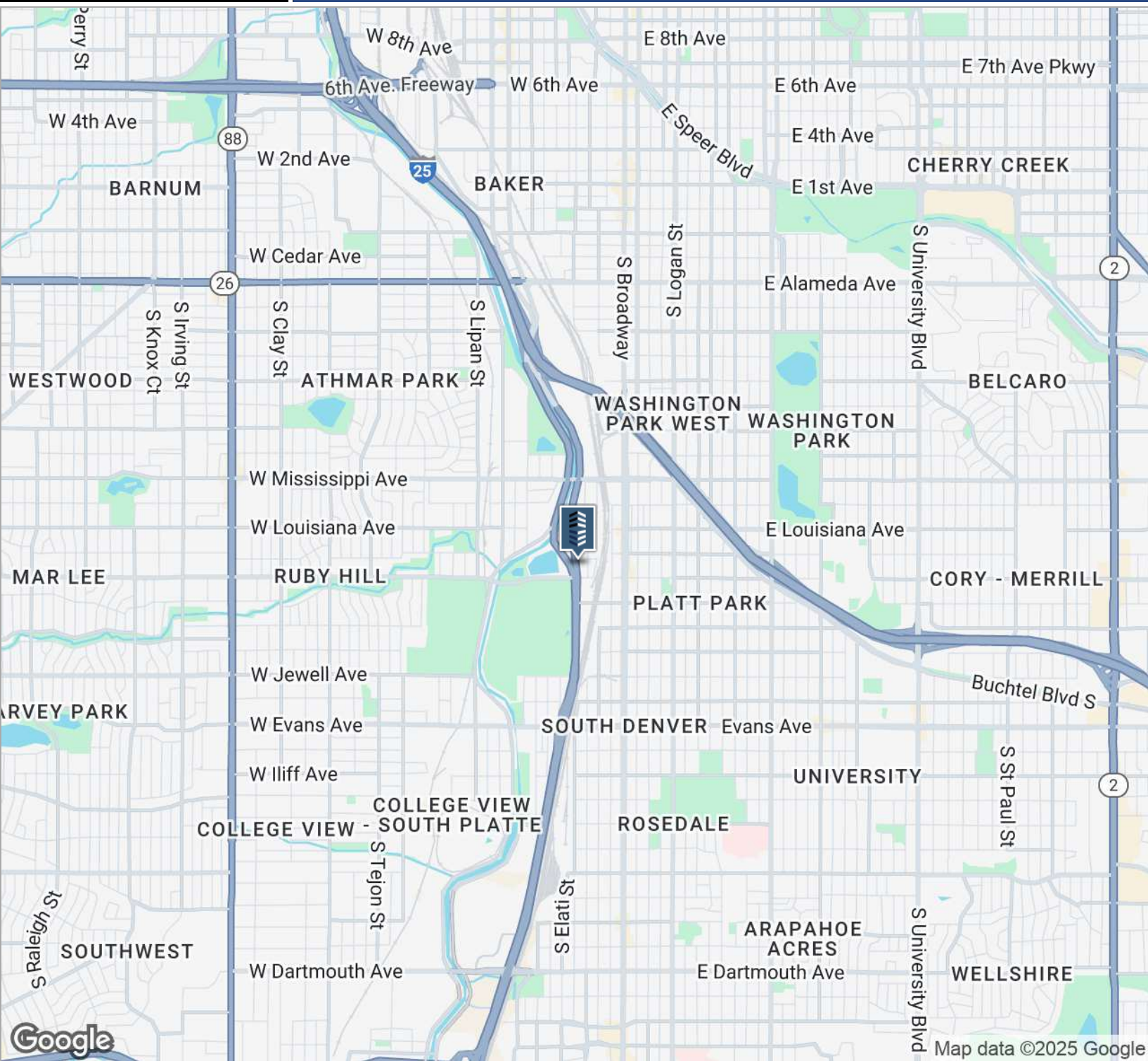
Available SF:	500-1,750
Lease Rate:	\$28.00 SF/yr (Full Service)
Zoning:	E-CC-3
Building Size:	11,319 SF
Building Class:	C
Year Built:	1955

PROPERTY HIGHLIGHTS

- Located on Northbound Santa Fe Drive just South of Mississippi Avenue in Denver.
- 2nd floor office suites - 500 to 1,750 SF available
- Nice modern finishes throughout
- Ample off-street parking
- Lease for just \$28/sf (includes utilities)
- Suite #203 is 500 SF
- Suite #205 is 750-1,250 SF
- All suites can be combined for up to 1,750 SF







CONTACT:

BRAD GILPIN
SENIOR VICE PRESIDENT
303.512.1196
bgilpin@uniqueprop.com

The information contained herein was obtained from sources believed reliable; however, Unique Properties makes no guarantees, warranties or representations as to the completeness or accuracy thereof. The presentation on this property is submitted subject to errors, omission, changes of price, or conditions, prior to sale or lease, or withdrawal without notice.