

1240 COMMERCE WAY WOODSTOCK



Freestanding Repair Building 8,450 SF on 1.25 Acres

For more information, please contact

Ted Overbaugh**
Senior Vice President
+1 519 340 2309
ted.overbaugh@cbre.com

Zach Van Louwe*
Senior Sales Associate
+1 519 340 2321
zachary.vanlouwe@cbre.com

*Sales Representative **Broker

Property Details

BUILDING SIZE	8,450 SF
SITE SIZE	1.25 Acres
OFFICE	1,200 SF
SHIPPING	5 Drive-In Doors
CLEAR HEIGHT	22'
ZONING	M3-30 General Industrial
ASKING PRICE	\$3,900,000

ADDITIONAL HIGHLIGHTS



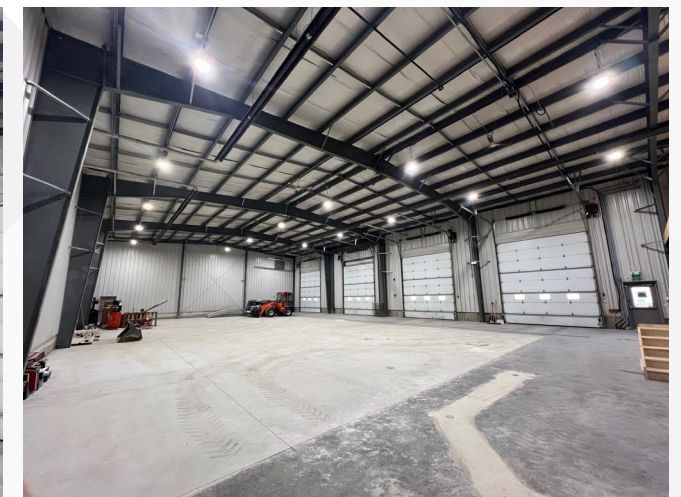
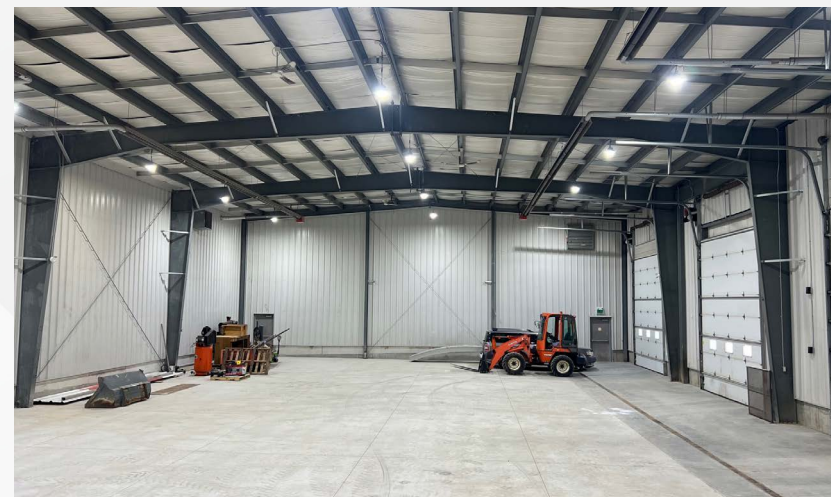
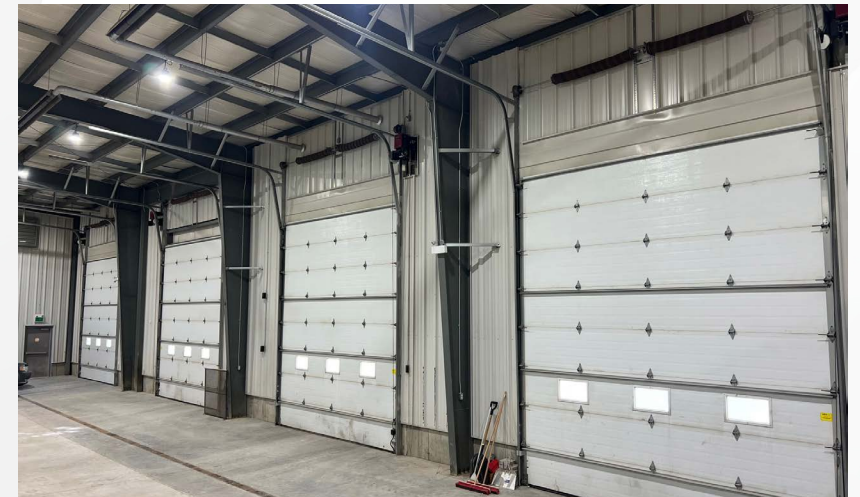
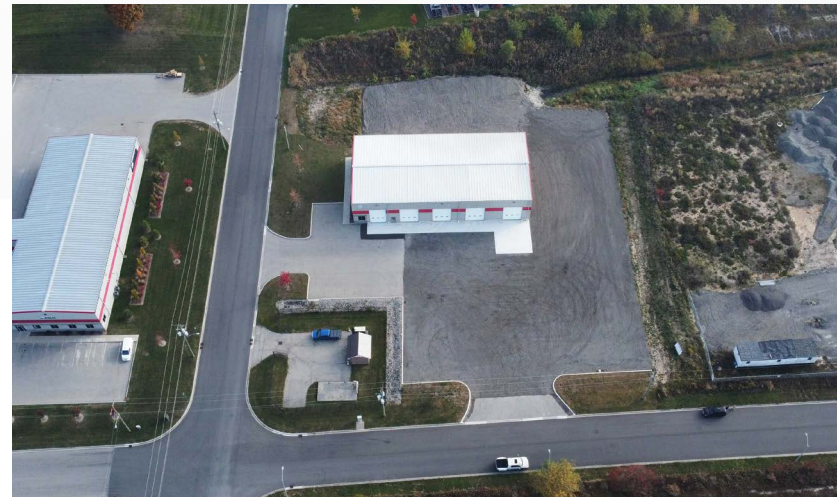
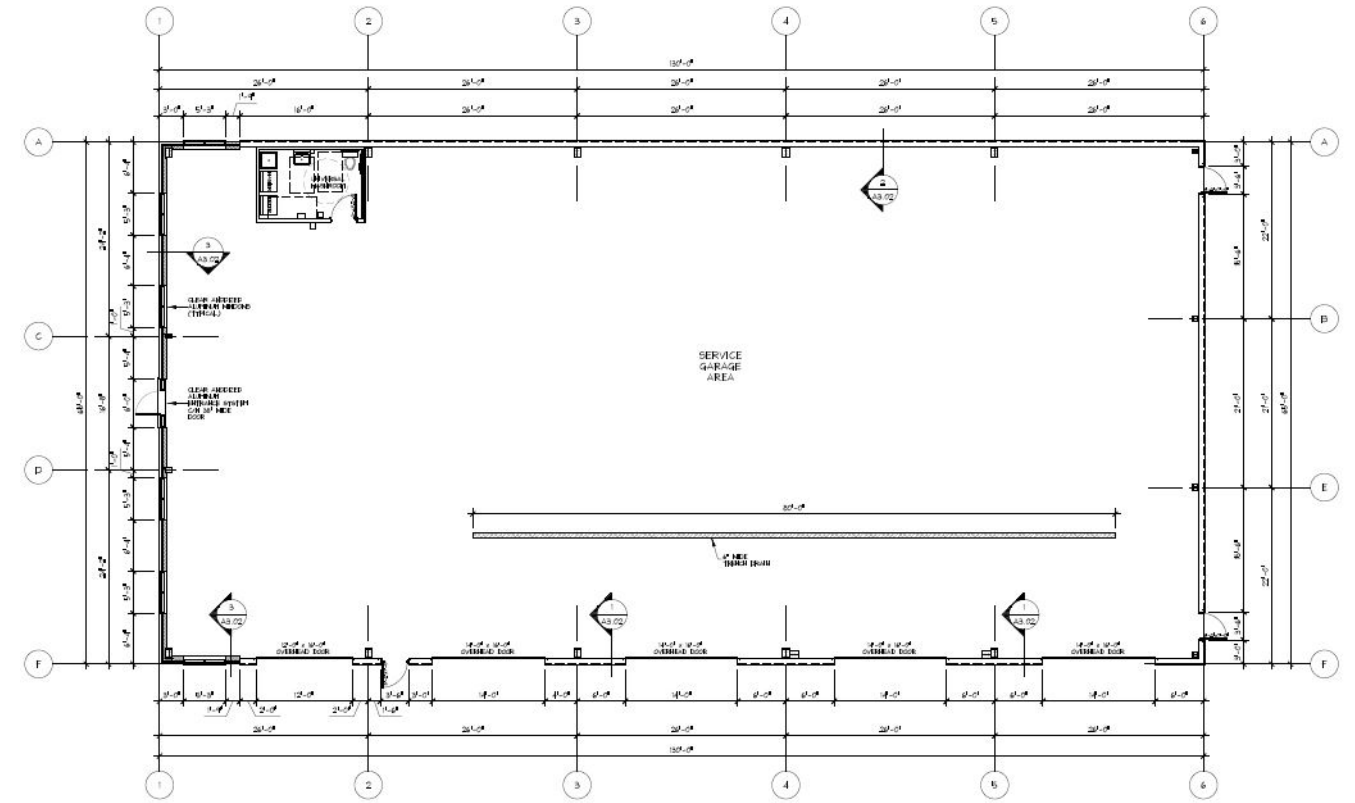
Less than 5 minutes to Highway 401 & 403



Excess space for parking of trucks and equipment



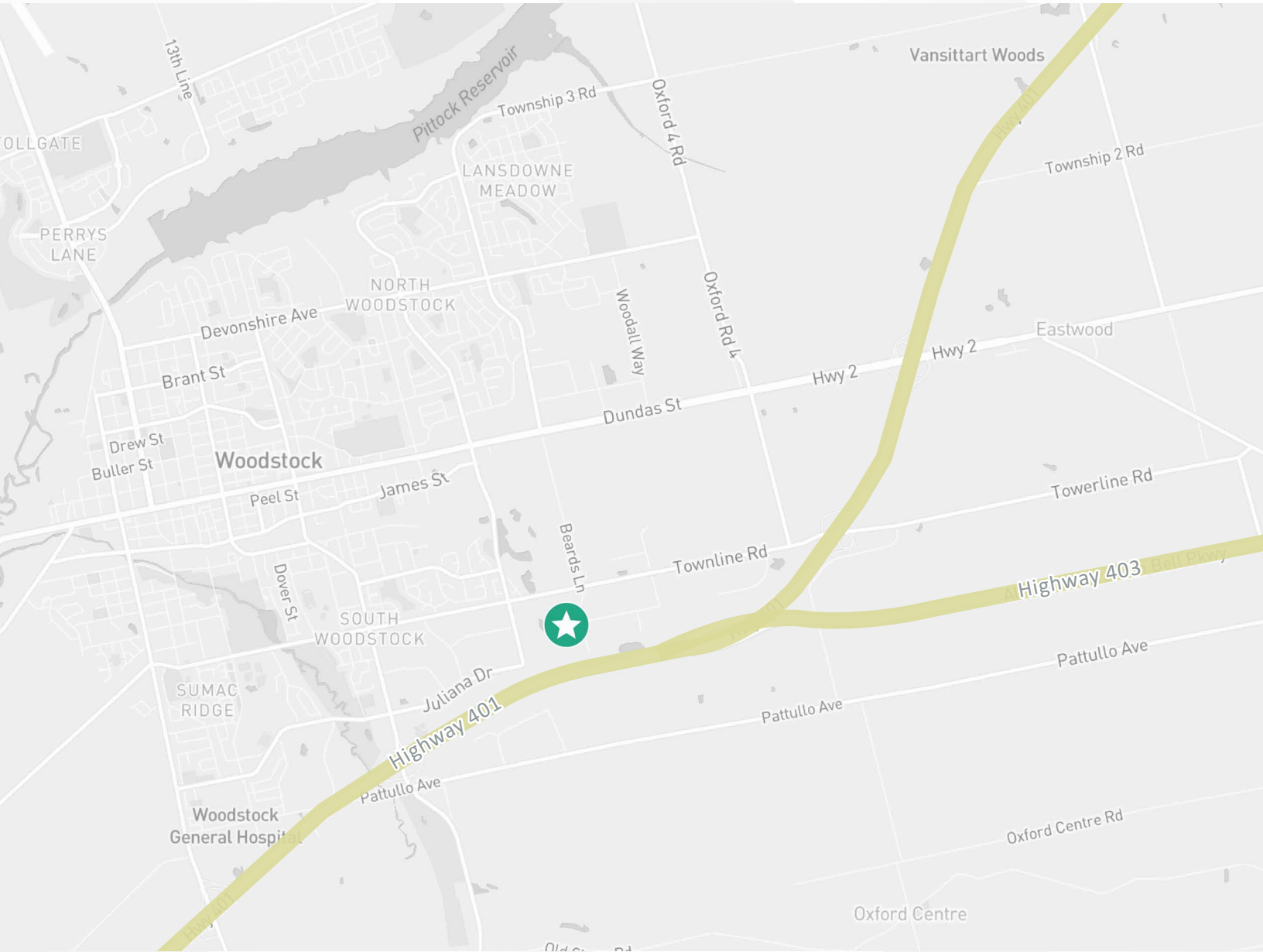
5 oversized bay doors



Freestanding Repair Building

1240 Commerce Way | Woodstock ON

For Sale



For more information, please contact

Ted Overbaugh**

Senior Vice President

+1 519 340 2309

ted.overbaugh@cbre.com

Zach Van Louwe*

Senior Sales Associate

+1 519 340 2321

zachary.vanlouwe@cbre.com

CBRE Limited, Real Estate Brokerage | 72 Victoria Street S, Suite 200 | Kitchener, ON | N2G 4Y9 | **Broker, *Sales Representative

© 2021 CBRE, Inc. All rights reserved. This information has been obtained from sources believed reliable, but has not been verified for accuracy or completeness. You should conduct a careful, independent investigation of the property and verify all information. Any reliance on this information is solely at your own risk. CBRE and the CBRE logo are service marks of CBRE, Inc. All other marks displayed on this document are the property of their respective owners, and the use of such logos does not imply any affiliation with or endorsement of CBRE. Photos herein are the property of their respective owners. Use of these images without the express written consent of the owner is prohibited. Mapping Sources: Canadian Mapping Services canadamapping@cbre.com; DMTI Spatial, Environics Analytics, Microsoft Bing, Google Earth.

