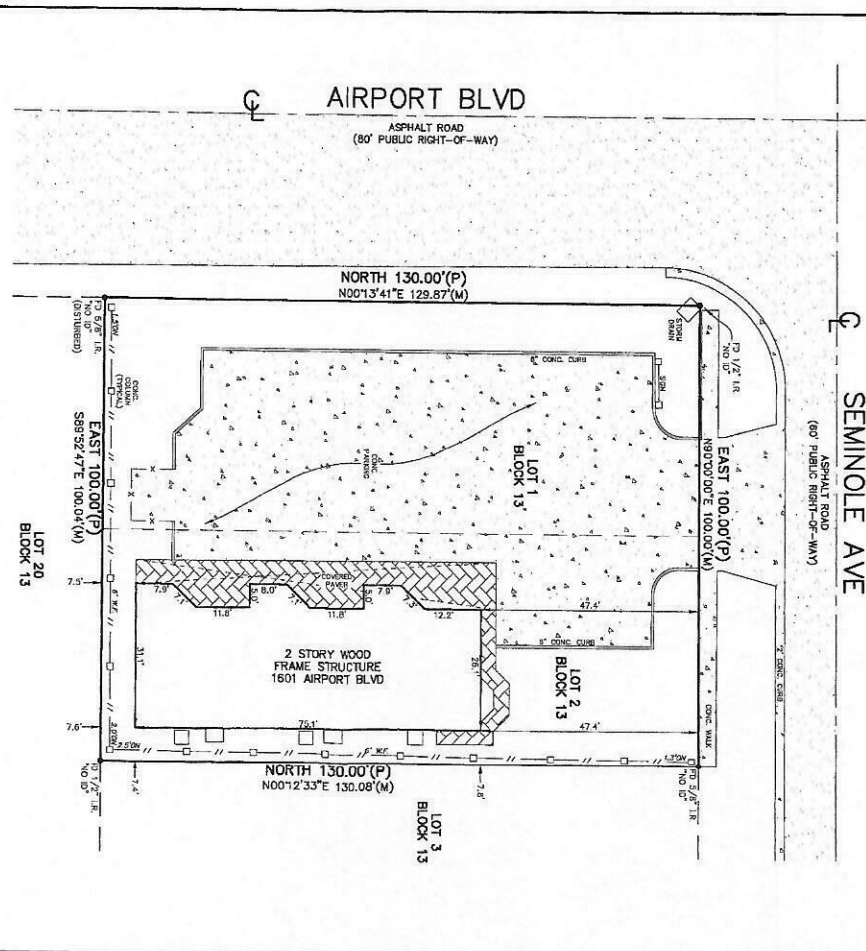
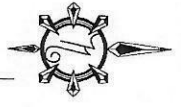


BOUNDARY SURVEY OF:
LOTS 1 AND 2, BLOCK 13 AS SHOWN ON THE PLAT OF MAGNOLIA PARK PLAT NO. 2
 AS RECORDED IN PLAT BOOK 6, PAGE 74 OF THE PUBLIC RECORDS OF BREVARD COUNTY, FLORIDA.



AIRPORT BLVD
 ASPHALT ROAD
 (80' PUBLIC RIGHT-OF-WAY)

SEMINOLE AVE
 ASPHALT ROAD
 (60' PUBLIC RIGHT-OF-WAY)

NORTH 130.00'(P)
 N00°13'41"E 129.87'(M)

NORTH 130.00'(P)
 N00°12'33"E 130.08'(M)

EAST 100.00'(P)
 S89°52'47"E 100.04'(M)

EAST 100.00'(P)
 S89°52'47"E 100.04'(M)

LOT 20
BLOCK 13

LOT 3
BLOCK 13

2 STORY WOOD
FRAME STRUCTURE
1601 AIRPORT BLVD

LEGEND

- (LAK) ASYD ANION AS
- 1. CONCRETE BLOCK STRUCTURE
- 2. CONCRETE BLOCK STRUCTURE
- 3. CONCRETE BLOCK STRUCTURE
- 4. CONCRETE BLOCK STRUCTURE
- 5. CONCRETE BLOCK STRUCTURE
- 6. CONCRETE BLOCK STRUCTURE
- 7. CONCRETE BLOCK STRUCTURE
- 8. CONCRETE BLOCK STRUCTURE
- 9. CONCRETE BLOCK STRUCTURE
- 10. CONCRETE BLOCK STRUCTURE
- 11. CONCRETE BLOCK STRUCTURE
- 12. CONCRETE BLOCK STRUCTURE
- 13. CONCRETE BLOCK STRUCTURE
- 14. CONCRETE BLOCK STRUCTURE
- 15. CONCRETE BLOCK STRUCTURE
- 16. CONCRETE BLOCK STRUCTURE
- 17. CONCRETE BLOCK STRUCTURE
- 18. CONCRETE BLOCK STRUCTURE
- 19. CONCRETE BLOCK STRUCTURE
- 20. CONCRETE BLOCK STRUCTURE
- 21. CONCRETE BLOCK STRUCTURE
- 22. CONCRETE BLOCK STRUCTURE
- 23. CONCRETE BLOCK STRUCTURE
- 24. CONCRETE BLOCK STRUCTURE
- 25. CONCRETE BLOCK STRUCTURE
- 26. CONCRETE BLOCK STRUCTURE
- 27. CONCRETE BLOCK STRUCTURE
- 28. CONCRETE BLOCK STRUCTURE
- 29. CONCRETE BLOCK STRUCTURE
- 30. CONCRETE BLOCK STRUCTURE
- 31. CONCRETE BLOCK STRUCTURE
- 32. CONCRETE BLOCK STRUCTURE
- 33. CONCRETE BLOCK STRUCTURE
- 34. CONCRETE BLOCK STRUCTURE
- 35. CONCRETE BLOCK STRUCTURE
- 36. CONCRETE BLOCK STRUCTURE
- 37. CONCRETE BLOCK STRUCTURE
- 38. CONCRETE BLOCK STRUCTURE
- 39. CONCRETE BLOCK STRUCTURE
- 40. CONCRETE BLOCK STRUCTURE
- 41. CONCRETE BLOCK STRUCTURE
- 42. CONCRETE BLOCK STRUCTURE
- 43. CONCRETE BLOCK STRUCTURE
- 44. CONCRETE BLOCK STRUCTURE
- 45. CONCRETE BLOCK STRUCTURE
- 46. CONCRETE BLOCK STRUCTURE
- 47. CONCRETE BLOCK STRUCTURE
- 48. CONCRETE BLOCK STRUCTURE
- 49. CONCRETE BLOCK STRUCTURE
- 50. CONCRETE BLOCK STRUCTURE
- 51. CONCRETE BLOCK STRUCTURE
- 52. CONCRETE BLOCK STRUCTURE
- 53. CONCRETE BLOCK STRUCTURE
- 54. CONCRETE BLOCK STRUCTURE
- 55. CONCRETE BLOCK STRUCTURE
- 56. CONCRETE BLOCK STRUCTURE
- 57. CONCRETE BLOCK STRUCTURE
- 58. CONCRETE BLOCK STRUCTURE
- 59. CONCRETE BLOCK STRUCTURE
- 60. CONCRETE BLOCK STRUCTURE
- 61. CONCRETE BLOCK STRUCTURE
- 62. CONCRETE BLOCK STRUCTURE
- 63. CONCRETE BLOCK STRUCTURE
- 64. CONCRETE BLOCK STRUCTURE
- 65. CONCRETE BLOCK STRUCTURE
- 66. CONCRETE BLOCK STRUCTURE
- 67. CONCRETE BLOCK STRUCTURE
- 68. CONCRETE BLOCK STRUCTURE
- 69. CONCRETE BLOCK STRUCTURE
- 70. CONCRETE BLOCK STRUCTURE
- 71. CONCRETE BLOCK STRUCTURE
- 72. CONCRETE BLOCK STRUCTURE
- 73. CONCRETE BLOCK STRUCTURE
- 74. CONCRETE BLOCK STRUCTURE
- 75. CONCRETE BLOCK STRUCTURE
- 76. CONCRETE BLOCK STRUCTURE
- 77. CONCRETE BLOCK STRUCTURE
- 78. CONCRETE BLOCK STRUCTURE
- 79. CONCRETE BLOCK STRUCTURE
- 80. CONCRETE BLOCK STRUCTURE
- 81. CONCRETE BLOCK STRUCTURE
- 82. CONCRETE BLOCK STRUCTURE
- 83. CONCRETE BLOCK STRUCTURE
- 84. CONCRETE BLOCK STRUCTURE
- 85. CONCRETE BLOCK STRUCTURE
- 86. CONCRETE BLOCK STRUCTURE
- 87. CONCRETE BLOCK STRUCTURE
- 88. CONCRETE BLOCK STRUCTURE
- 89. CONCRETE BLOCK STRUCTURE
- 90. CONCRETE BLOCK STRUCTURE
- 91. CONCRETE BLOCK STRUCTURE
- 92. CONCRETE BLOCK STRUCTURE
- 93. CONCRETE BLOCK STRUCTURE
- 94. CONCRETE BLOCK STRUCTURE
- 95. CONCRETE BLOCK STRUCTURE
- 96. CONCRETE BLOCK STRUCTURE
- 97. CONCRETE BLOCK STRUCTURE
- 98. CONCRETE BLOCK STRUCTURE
- 99. CONCRETE BLOCK STRUCTURE
- 100. CONCRETE BLOCK STRUCTURE

SURVEYOR'S NOTES

- 1) THE DEANING SURVEY SHOWN HEREON IS BASED ON A ASSURED BEARING OF N 89°52'47"E ALONG THE SOUTH LINE OF LOT 20, BLOCK 13, AS SHOWN ON THE PLAT OF MAGNOLIA PARK PLAT NO. 2, AS RECORDED IN PLAT BOOK 6, PAGE 74 OF THE PUBLIC RECORDS OF BREVARD COUNTY, FLORIDA.
- 2) THIS SURVEY WAS PREPARED FROM TITLE INFORMATION PROVIDED TO THE SURVEYOR. THERE MAY BE ADDITIONAL RESTRICTIONS OR EASEMENTS THAT AFFECT THE PROPERTY.
- 3) UNDERGROUND UTILITIES AND FOUNDATIONS HAVE NOT BEEN SHOWN.
- 4) LOTS SHOWN HEREON WERE NOT ASSURATED FOR RIGHT-OF-WAY. RESERVATION AGREEMENT AND/OR ASSIGNMENT OF RECORD SHALL INFORMATION IF DESIRED, SHOULD BE OBTAINED BY OTHER THROUGH THE RECORDS OF BREVARD COUNTY, FLORIDA.
- 5) NOT VALID WITHOUT SEAL AND THE ORIGINAL SIGNED SURVEYOR AND WORKER.

PROFESSIONAL SURVEYOR & MAPPER IN RESPONSIBLE CHARGE
 MYRON E. BAKER - FLORIDA CERTIFICATE NO. 5085
 DISTRICT OF ADMINISTRATION LR 6389

Myron E. Baker

TYPE OF SURVEY:
BOUNDARY SURVEY

PROJECT: 18-1881

SCALE: 1" = 20'

DATE: 10/17/2018

CAO FILE: 18-1881.DWG

F.B. NUMBER:

REVISION:

PRECISION
LAND SURVEYING, INC.
 2900 LAKE WINDSOR ROAD, SUITE 1
 MELBOURNE, FLORIDA 32935
 PHONE: 321-259-4600
 EMAIL: PRECISIONSURVEYING@GMAIL.COM

J.J.L. PROPERTIES, LLC
 DEPENDABLE TITLE SERVICES OF FLORIDA
 ALLIANT NATIONAL TITLE INSURANCE COMPANY