

886-888

BROADWAY

BETWEEN STOCKTON & LEWIS STREETS | BEDFORD-STUYVESANT

PUREGYM

PUREGYM

SPACE A

SPACE B

SPACE C

886-888 BROADWAY

BETWEEN STOCKTON & LEWIS STREETS | BEDFORD-STUYVESANT

PROPERTY DETAILS:

SPACE A:	1,600 SF Ground Floor
SPACE B:	2,100 SF Ground Floor
SPACE C:	2,000 SF Ground Floor
FRONTAGE:	A: 15' B: 19' C: 20'
CEILING HEIGHT:	25'
POSSESSION:	Immediate
ASKING RENT:	Upon Request
TRANSPORTATION:	J M Z

HIGHLIGHTS:

- Spaces can be combined into a single, 5,700 SF unit
- All uses considered ability to vent for cooking
- Situated between the Myrtle Avenue Broadway subway lines with 3,789,470 annual ridership and Flushing Avenue Woodhull Hospital subway stop with 2,537,390 annual ridership
- Walking distance to the Broadway Triangle and 320-Bed Woodhull Medical Center with over 4,257 doctors, approximately 2,700 employees, 350,969 clinic visits, and 113,799 emergency room visits annually
- Non-contiguous storage available



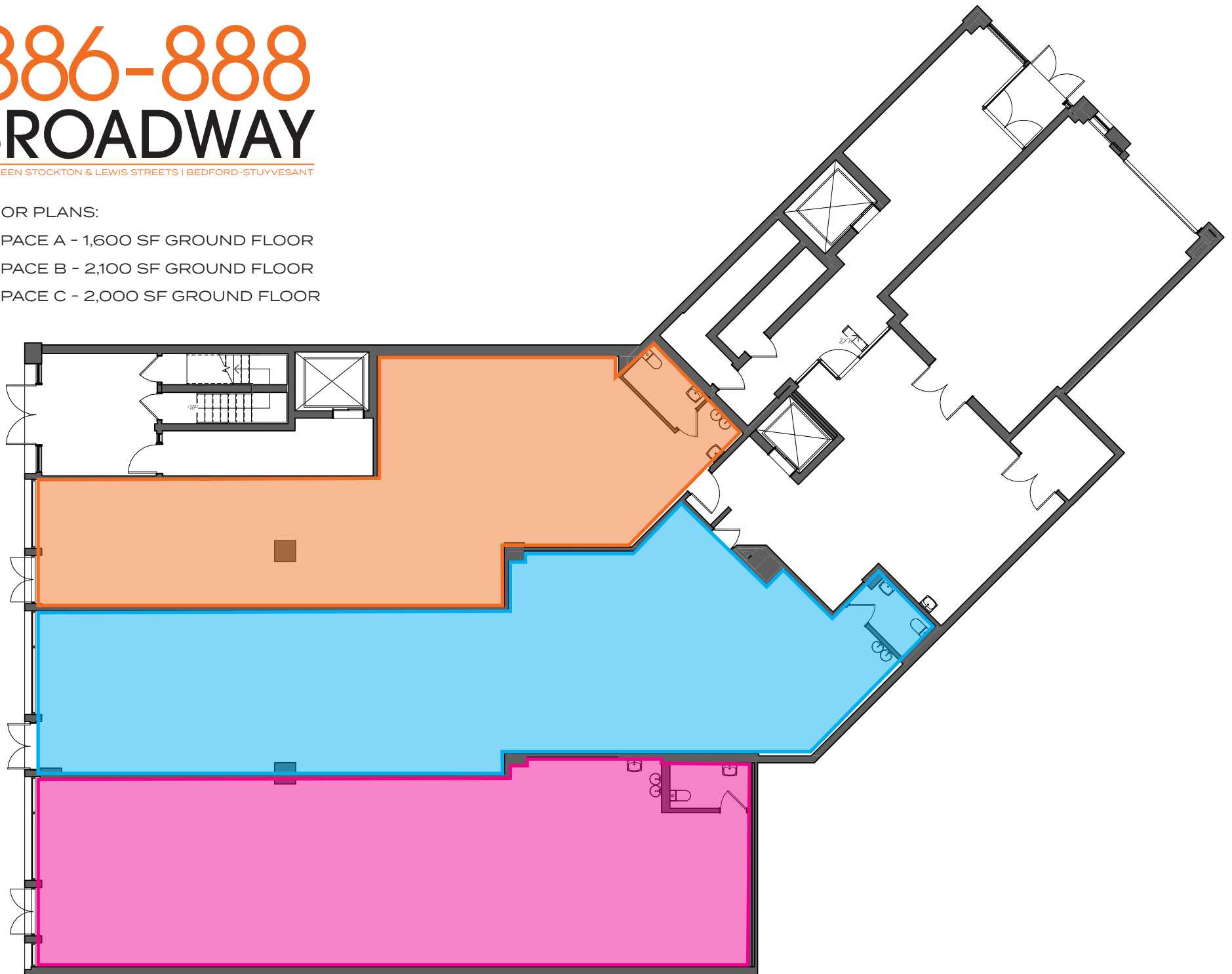
All information supplied in this marketing presentation and/or flyer is from sources deemed reliable and is furnished subject to errors, omissions, modifications, removal of listings from sale/lease and to any listing condition. Any square footage, dimensions, floor plans and/or technical data set forth are approximations and are subject to further elaboration/confirmation.

886-888 BROADWAY

BETWEEN STOCKTON & LEWIS STREETS | BEDFORD-STUYVESANT

FLOOR PLANS:

- SPACE A - 1,600 SF GROUND FLOOR
- SPACE B - 2,100 SF GROUND FLOOR
- SPACE C - 2,000 SF GROUND FLOOR



886-888 BROADWAY

BETWEEN STOCKTON & LEWIS STREETS | BEDFORD-STUYVESANT

INTERIORS:



886-888 BROADWAY

BETWEEN STOCKTON & LEWIS STREETS | BEDFORD-STUYVESANT

FOR MORE INFORMATION,
PLEASE CONTACT:

MAYER GHONOJA

212.548.3945 | MG@ksrny.com

SAM SABIN

917.846.5367 | SSabin@ksrny.com

BARRY FISHBACH

917.273.6752 | Fishbach@ksrny.com

