

# ECOLEX<sup>®</sup>

A better, greener place to work

West Palm Beach's Premier  
**HURRICANE RESISTANT, ECO-FRIENDLY  
OFFICE BUILDING**

*LEED Gold Certified, Designed to Withstand Category 4 Hurricanes,  
with Full Backup Generators*

Just minutes to  
Downtown.

At a third of  
downtown rates.



**NEW OWNERSHIP | UPGRADED AMENITIES | ENDLESS OPPORTUNITIES**

**NAI** Merin Hunter  
Codman, Inc.

Commercial Real Estate Services, Worldwide.

561 471 8000 | [www.mhcreal.com](http://www.mhcreal.com)

**Lesley Sheinberg**

561 254 7810 | [lsheinberg@mhcreal.com](mailto:lsheinberg@mhcreal.com)

**Julia Piatek**

954 939 1444 | [jpiatek@mhcreal.com](mailto:jpiatek@mhcreal.com)

For Lease  
±4,302-9,289 SF  
Office Space



**ECOLEX**<sup>®</sup>

1641 Worthington Road  
West Palm Beach, FL 33409

## ENHANCED FEATURES:



- Modern Upgraded Lobby
- Convenient EV Charging Stations
- Move-In Ready Suites

## Property Features

- High-performance green building:
  - Designed to withstand category 4 hurricanes
  - High-impact glass throughout
  - Three 100% back-up generators - run at full capacity for up to 7 days
  - Rainwater recycling system
  - Tate integrated air and floor system for easy modifications
- On-site fitness center with showers & lockers
- Attached 5-story parking garage
- Across from Drive Shack and directly adjacent to Hampton Inn and Hilton Garden Inn

## Key Highlights



LEED Gold Certified by U.S. Green Building Council



Designed to withstand a category 4 hurricane with three back-up generators



Across from Palm Beach International Airport with immediate airport access



Less than 1 mile from I-95, near the best of West Palm Beach

**Lesley Sheinberg**, Managing Director  
561 254 7810 | [lsheinberg@mhcreal.com](mailto:lsheinberg@mhcreal.com)

**Julia Piatek**, Associate  
954 939 1444 | [jpiatek@mhcreal.com](mailto:jpiatek@mhcreal.com)



**FOR LEASE**

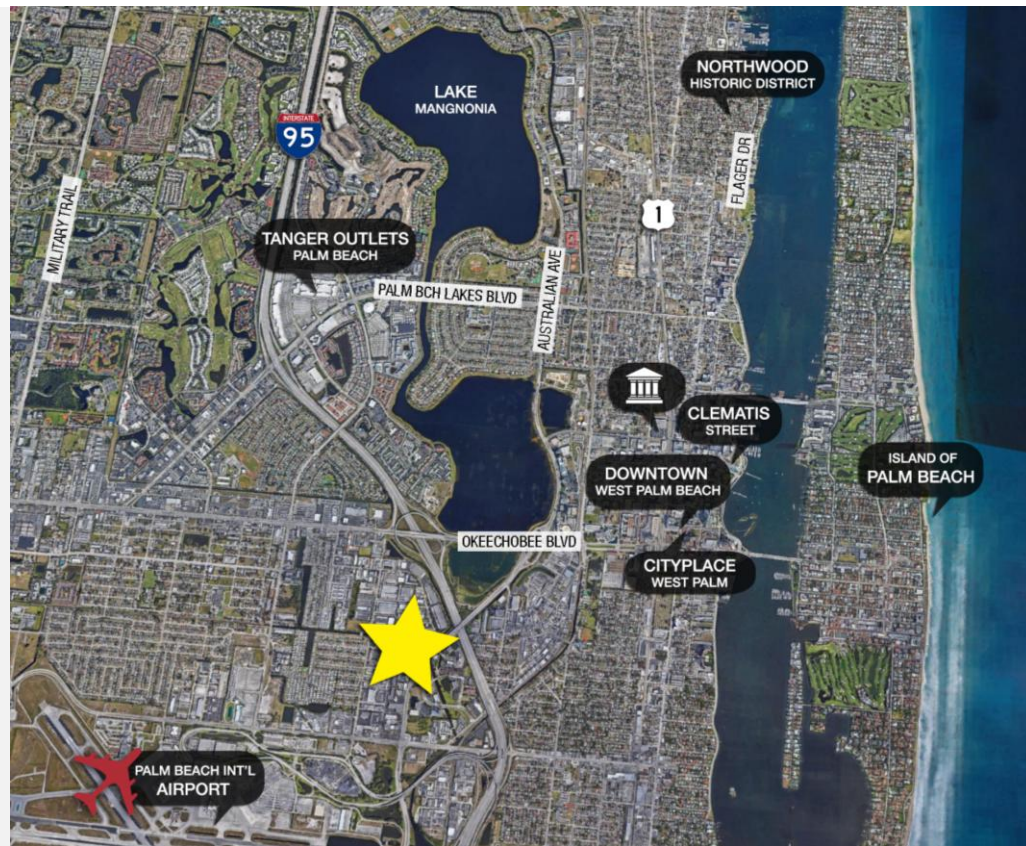
**±4,302-9,289 SF Office Space**

**ECOPLEX<sup>®</sup>**

## Unbeatable Location & Great Rates

EcoPlex<sup>®</sup> offers a highly convenient location in a well-maintained corporate park, near the best of downtown West Palm Beach at a third of the price.

- 5 minutes to Downtown West Palm Beach
- 7 minutes to PBI
- 10 minutes to Tanger Outlets Palm Beach



---

**Available Space:**

Suite 220: 4,987 SF

Suite 230: 4,302 SF

---

**Rental Rate:**

\$29.00/SF NNN; \$15.75/SF CAM (electric & janitorial included)

---

**Parking:**

Free surface and garage parking (4:1,000)

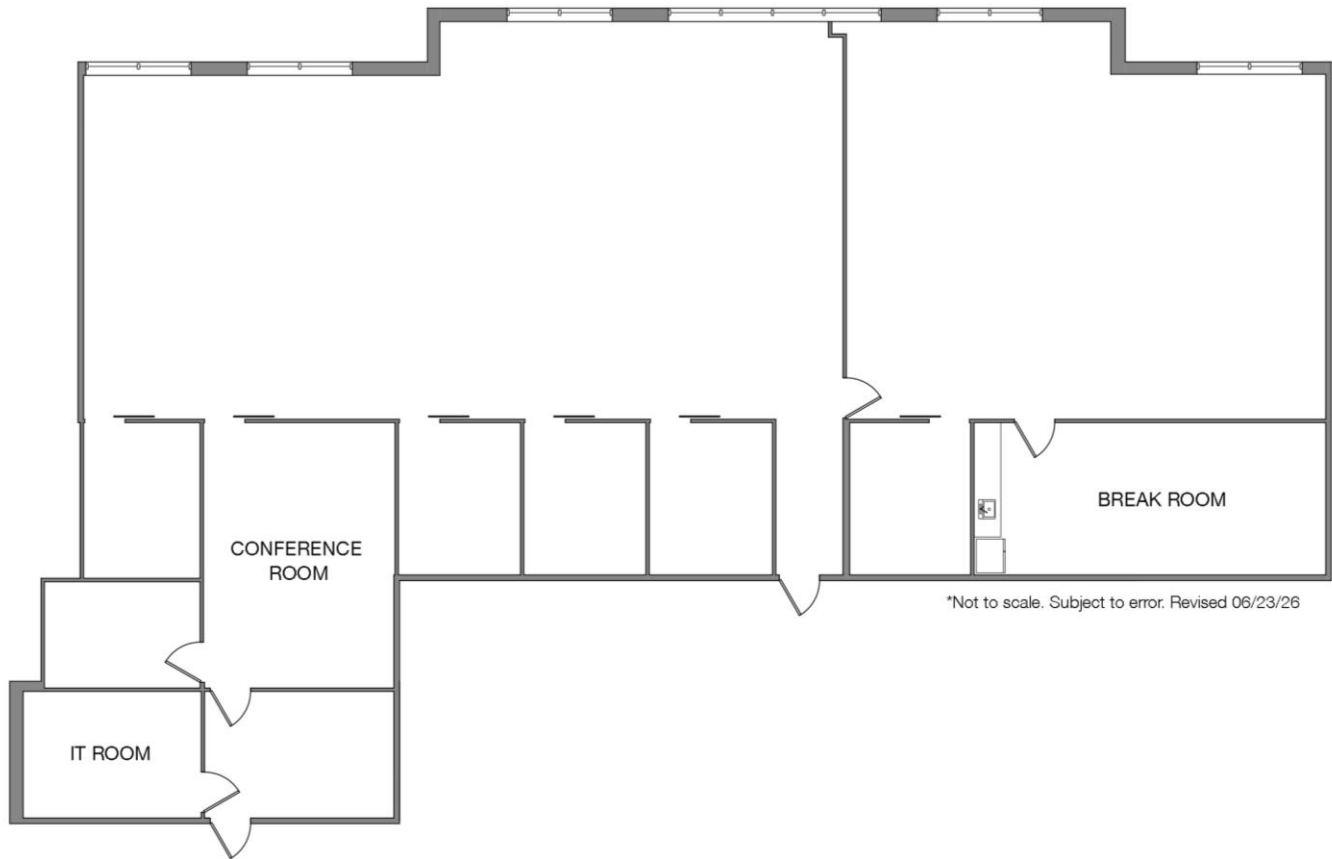


**CLICK HERE FOR 3D TOURS!**



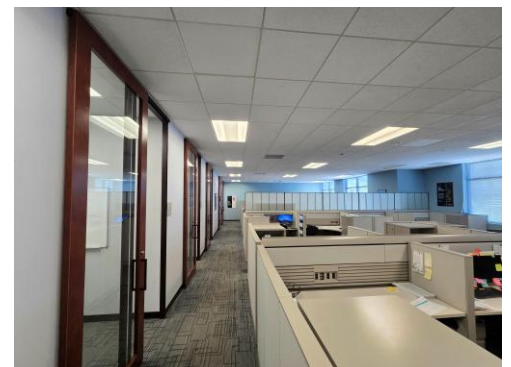
**FOR LEASE**

**Suite 220** ±4,987 SF



## Suite Features

- Large windows & abundant natural light
- Private offices
- Spacious & open work areas
- Conference room
- IT room
- Break room

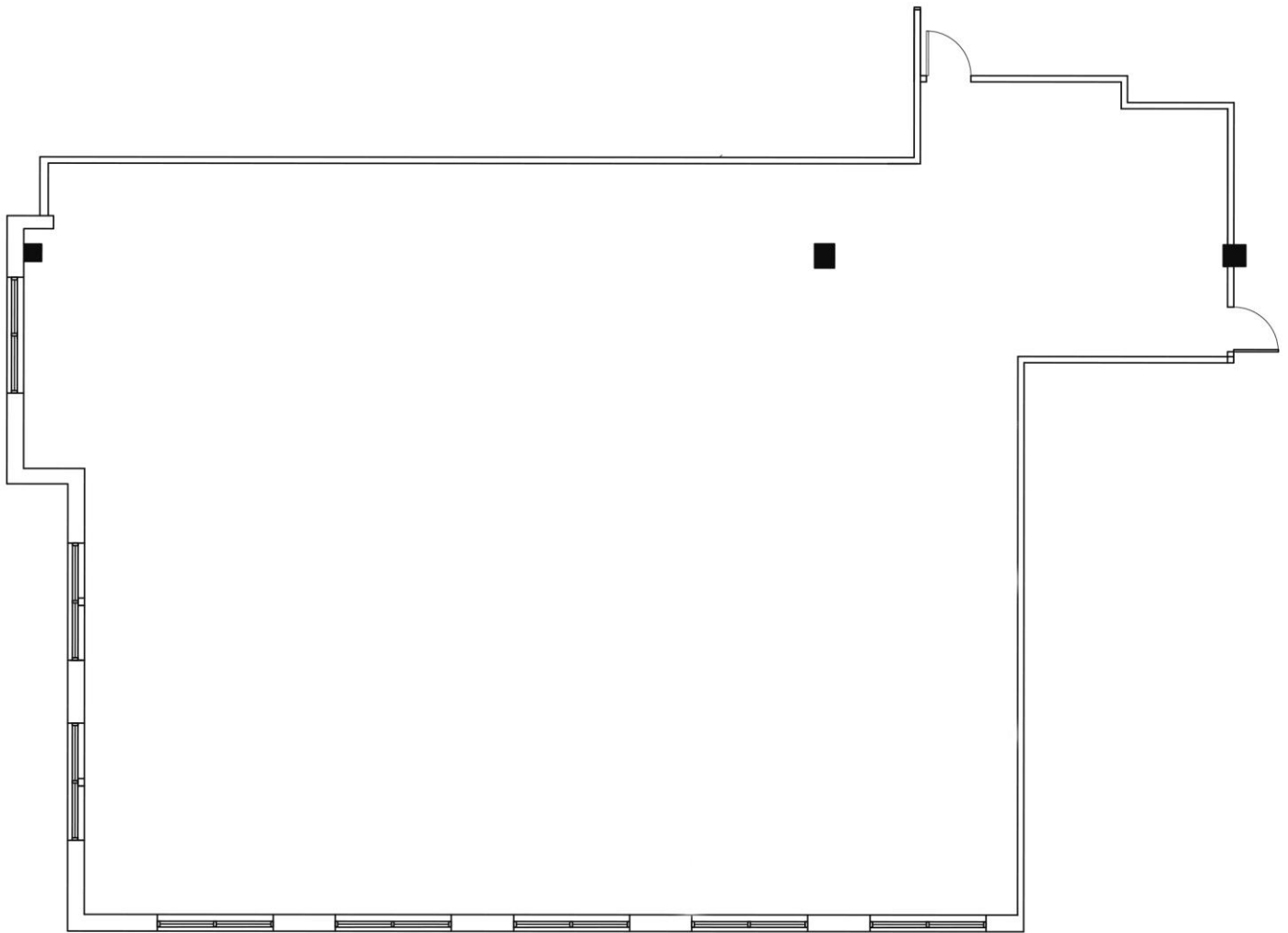


**FOR LEASE**

**Suite 230** ±4,302 SF



**Flexible layout ready for customization.**  
Build to suit opportunity available.



\*Not to scale. Subject to error. Revised 02/26/26