

# **Apopka Office/Flex Space For Lease**

**941—949 North Orange Blossom Trail**  
**Apopka, Florida 32703**  
**Suite 949 — 1,200 SF**

**U. S. 441 Frontage**  
**AADT 25,500**  
**Building and Awning**  
**Signage**



**\$12.50 NNN\***  
**\$7.13 Est.**  
**\$1,963/Month**

**Bob Atkins**  
**Broker**  
**O: 407-875-8040 x 101**  
**M: 407-257-5499**  
**bob@atkinscre.com**



**COMMERCIAL REAL ESTATE**



**Jackie Atkins**  
**Sales Associate**  
**O: 407-875-8040 x 102**  
**M: 407-383-2719**  
**Jackie@atkinscre.com**

Disclaimer: This document has been prepared by Atkins Commercial Real Estate LLC for advertising and general information only. Atkins Commercial Real Estate LLC makes no guarantees, representations or warranties of any kind, expressed or implied, regarding the information including, but not limited to, warranties of content, accuracy and reliability. Any interested party should undertake their own inquiries as to the accuracy of the information. Atkins Commercial Real Estate LLC excludes unequivocally all inferred or implied terms, conditions and warranties arising out of this document and excludes all liability for loss or damages arising therefrom. This publication is the copyrighted property of Atkins Commercial Real Estate LLC and/or its licensor(s). All rights reserved.

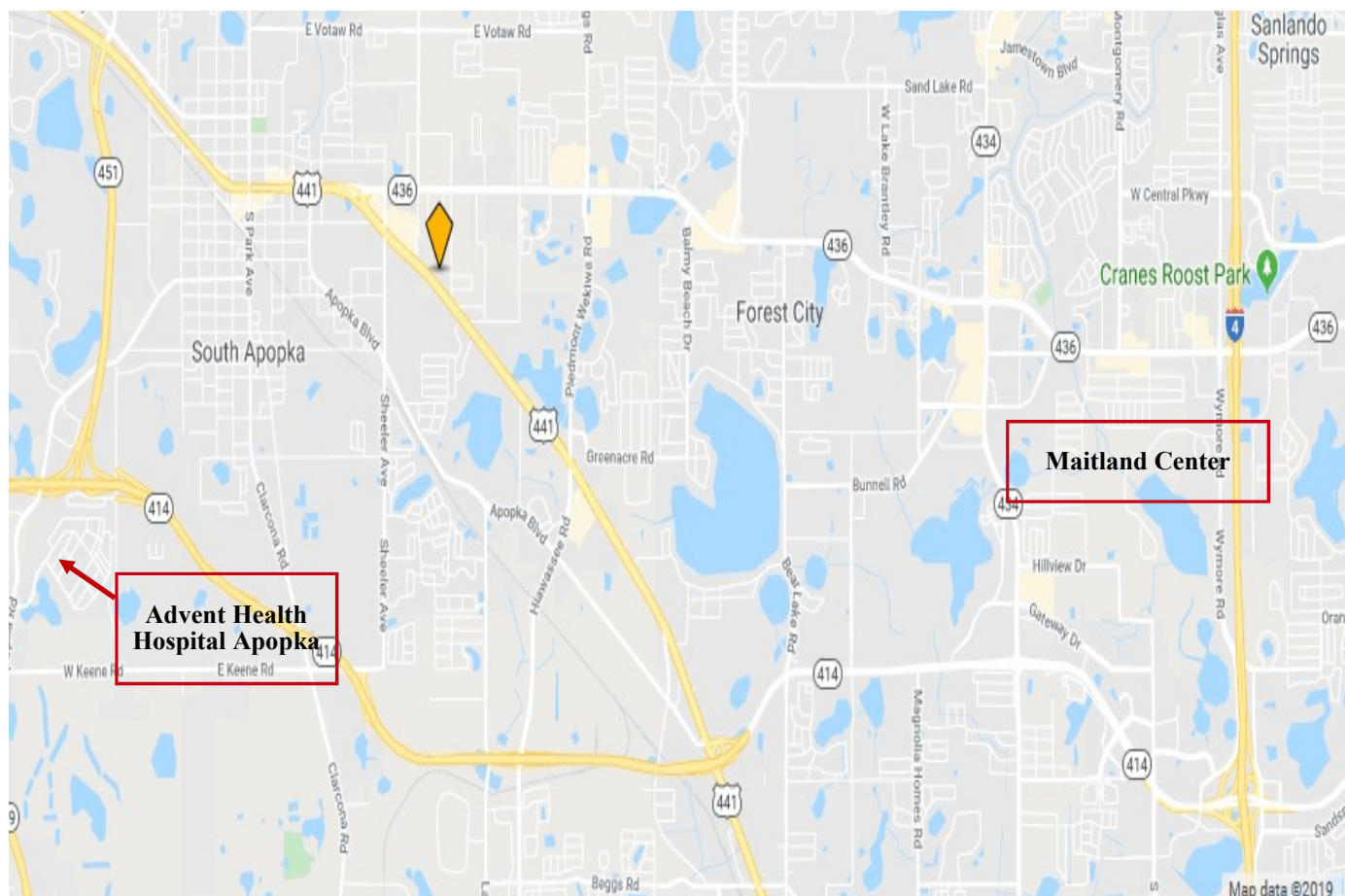
**Commercial Sales & Leasing | Tenant Representation | Real Estate Consulting | Development Management | Asset Management**  
**www.atkinscre.com 2700 Westhall Lane, Suite 120, Maitland, FL 32751 407-875-8040**

# **Apopka Office/Flex Space For Lease**

## **941—949 North Orange Blossom Trail**

### **Apopka, Florida 32703**

### **Suite 949 — 1,200 SF**



**Bob Atkins**  
**Broker**  
**O: 407-875-8040 x 101**  
**M: 407-257-5499**  
**bob@atkinscre.com**



**Jackie Atkins**  
**Sales Associate**  
**O: 407-875-8040 x 102**  
**M: 407-383-2719**  
**Jackie@atkinscre.com**

Disclaimer: This document has been prepared by Atkins Commercial Real Estate LLC for advertising and general information only. Atkins Commercial Real Estate LLC makes no guarantees, representations or warranties of any kind, expressed or implied, regarding the information including, but not limited to, warranties of content, accuracy and reliability. Any interested party should undertake their own inquiries as to the accuracy of the information. Atkins Commercial Real Estate LLC excludes unequivocally all inferred or implied terms, conditions and warranties arising out of this document and excludes all liability for loss or damages arising therefrom. This publication is the copyrighted property of Atkins Commercial Real Estate LLC and/or its licensor(s). All rights reserved.

**Commercial Sales & Leasing | Tenant Representation | Real Estate Consulting | Development Management | Asset Management**  
**www.atkinscre.com 2700 Westhall Lane, Suite 120, Maitland, FL 32751 407-875-8040**

# Apopka Office/Flex Space For Lease

941—949 North Orange Blossom Trail  
Apopka, Florida 32703  
Suite 949 — 1,200 SF



**Bob Atkins**

**Broker**

**O: 407-875-8040 x 101**

**M: 407-257-5499**

**bob@atkinscre.com**



**COMMERCIAL REAL ESTATE**



**Jackie Atkins**

**Sales Associate**

**O: 407-875-8040 x 102**

**M: 407-383-2719**

**Jackie@atkinscre.com**

**Disclaimer:** This document has been prepared by Atkins Commercial Real Estate LLC for advertising and general information only. Atkins Commercial Real Estate LLC makes no guarantees, representations or warranties of any kind, expressed or implied, regarding the information including, but not limited to, warranties of content, accuracy and reliability. Any interested party should undertake their own inquiries as to the accuracy of the information. Atkins Commercial Real Estate LLC excludes unequivocally all inferred or implied terms, conditions and warranties arising out of this document and excludes all liability for loss or damages arising therefrom. This publication is the copyrighted property of Atkins Commercial Real Estate LLC and/or its licensor(s). All rights reserved.

**Commercial Sales & Leasing | Tenant Representation | Real Estate Consulting | Development Management | Asset Management**  
**www.atkinscre.com 2700 Westhall Lane, Suite 120, Maitland, FL 32751 407-875-8040**

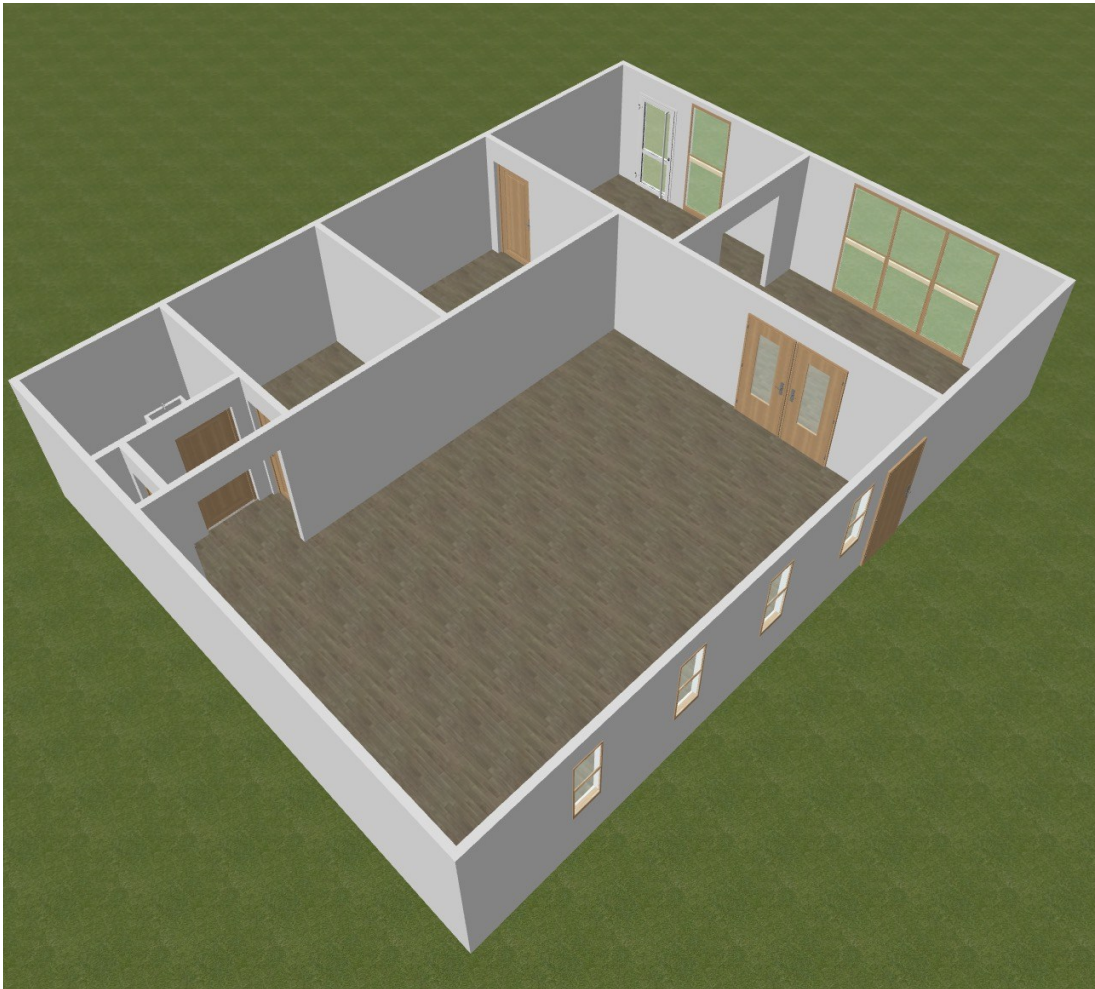


# **Apopka Office/Flex Space For Lease**

## **941—949 North Orange Blossom Trail**

### **Apopka, Florida 32703**

### **Suite 949 — 1,200 SF**



**Bob Atkins**

**Broker**

**O: 407-875-8040 x 101**

**M: 407-257-5499**

**[bob@atkinscre.com](mailto:bob@atkinscre.com)**



**COMMERCIAL REAL ESTATE**



**Jackie Atkins**

**Sales Associate**

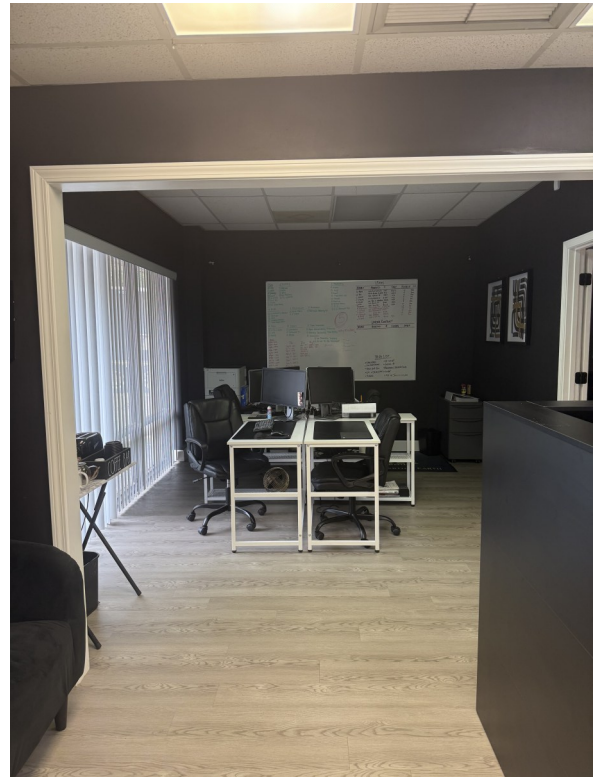
**O: 407-875-8040 x 102**

**M: 407-383-2719**

**[Jackie@atkinscre.com](mailto:Jackie@atkinscre.com)**

Disclaimer: This document has been prepared by Atkins Commercial Real Estate LLC for advertising and general information only. Atkins Commercial Real Estate LLC makes no guarantees, representations or warranties of any kind, expressed or implied, regarding the information including, but not limited to, warranties of content, accuracy and reliability. Any interested party should undertake their own inquiries as to the accuracy of the information. Atkins Commercial Real Estate LLC excludes unequivocally all inferred or implied terms, conditions and warranties arising out of this document and excludes all liability for loss or damages arising therefrom. This publication is the copyrighted property of Atkins Commercial Real Estate LLC and/or its licensor(s). All rights reserved.

**Commercial Sales & Leasing | Tenant Representation | Real Estate Consulting | Development Management | Asset Management**  
**[www.atkinscre.com](http://www.atkinscre.com) 2700 Westhall Lane, Suite 120, Maitland, FL 32751 407-875-8040**



**Bob Atkins**

**Broker**

**O: 407-875-8040 x 101**

**M: 407-257-5499**

**bob@atkinscre.com**



**COMMERCIAL REAL ESTATE**



**Jackie Atkins**

**Sales Associate**

**O: 407-875-8040 x 102**

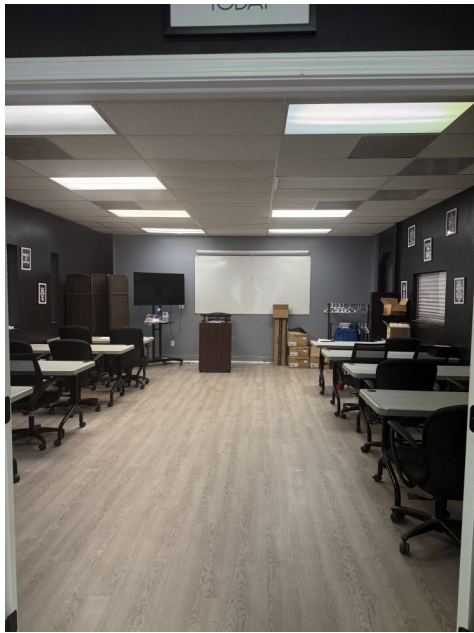
**M: 407-383-2719**

**Jackie@atkinscre.com**

Disclaimer: This document has been prepared by Atkins Commercial Real Estate LLC for advertising and general information only. Atkins Commercial Real Estate LLC makes no guarantees, representations or warranties of any kind, expressed or implied, regarding the information including, but not limited to, warranties of content, accuracy and reliability. Any interested party should undertake their own inquiries as to the accuracy of the information. Atkins Commercial Real Estate LLC excludes unequivocally all inferred or implied terms, conditions and warranties arising out of this document and excludes all liability for loss or damages arising therefrom. This publication is the copyrighted property of Atkins Commercial Real Estate LLC and/or its licensor(s). All rights reserved.

**Commercial Sales & Leasing | Tenant Representation | Real Estate Consulting | Development Management | Asset Management**  
**www.atkinscre.com 2700 Westhall Lane, Suite 120, Maitland, FL 32751 407-875-8040**





**Bob Atkins**

**Broker**

**O: 407-875-8040 x 101**

**M: 407-257-5499**

**bob@atkinscre.com**



**COMMERCIAL REAL ESTATE**



**Jackie Atkins**

**Sales Associate**

**O: 407-875-8040 x 102**

**M: 407-383-2719**

**Jackie@atkinscre.com**

Disclaimer: This document has been prepared by Atkins Commercial Real Estate LLC for advertising and general information only. Atkins Commercial Real Estate LLC makes no guarantees, representations or warranties of any kind, expressed or implied, regarding the information including, but not limited to, warranties of content, accuracy and reliability. Any interested party should undertake their own inquiries as to the accuracy of the information. Atkins Commercial Real Estate LLC excludes unequivocally all inferred or implied terms, conditions and warranties arising out of this document and excludes all liability for loss or damages arising therefrom. This publication is the copyrighted property of Atkins Commercial Real Estate LLC and/or its licensor(s). All rights reserved.

**Commercial Sales & Leasing | Tenant Representation | Real Estate Consulting | Development Management | Asset Management**  
**www.atkinscre.com 2700 Westhall Lane, Suite 120, Maitland, FL 32751 407-875-8040**