

FOR SALE ±6,003 SF

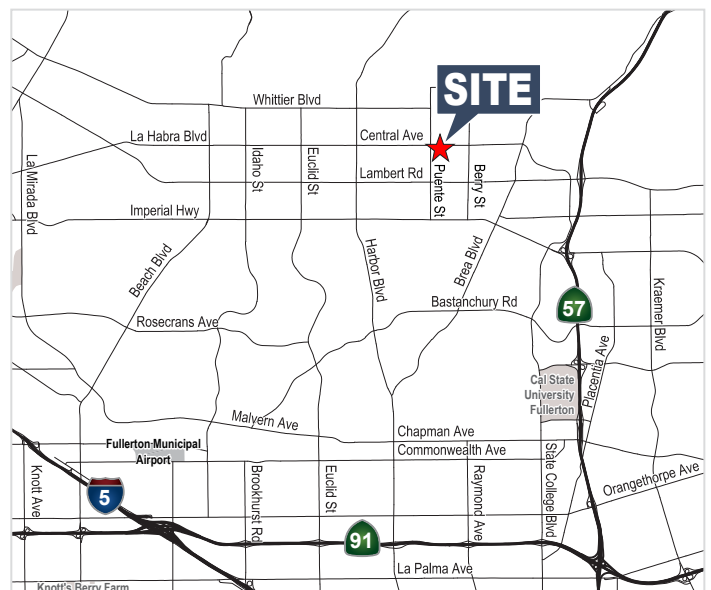
INDUSTRIAL UNIT FOR SALE

1050 W. Central Ave., Unit C, Brea, CA



Property Features

- ±6,003 Sq. Ft. Industrial
 - ±1,753 Sq. Ft. Office
 - ±4,250 Sq. Ft. Warehouse
- Fully Refurbished Property
- 19' Warehouse Clearance
- Fire Sprinklers Throughout
- One (1) Oversized 14' X 14' Ground Level Door (electric opener)
- Central Avenue Frontage
- Drive Around Building with Excellent Loading Capabilities
- Functional Office Layout with Natural Light
- 200 Amps of 120/208 Volt Power (Verify)
- 12 Parking Stalls (2:1 Parking - In Common)
- Abundant Skylights, LED Warehouse Lighting and Upgraded Flooring
- Remote Controlled Security System in Place
- Excellent Access to the 57 Freeway
- Close Access to Numerous Restaurant and Retail Amenities



MIKE VERNICK, CCIM, SIOR

Senior Vice President
714.935.2354
mvernick@voitco.com
Lic. #01420885

MORGAN HILL

Vice President
714.935.2322
mhill@voitco.com
Lic #01877356

MIKE HEFNER, SIOR

Executive Vice President
714.935.2331
mhefner@voitco.com
Lic. #00857352

Voit

REAL ESTATE SERVICES



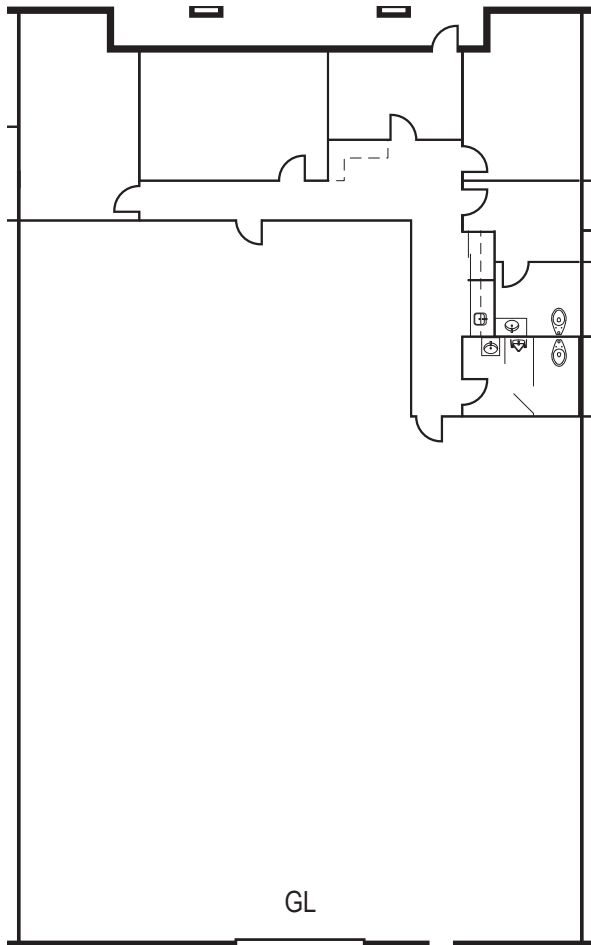
HEFNER
VERNICK
TEAM

FOR SALE ±6,003 SF

INDUSTRIAL UNIT FOR SALE

1050 W. Central Ave., Unit C, Brea, CA

SITE PLAN



MIKE VERNICK, CCIM, SIOR

Senior Vice President
714.935.2354
mvernick@voitco.com
Lic. #01420885

MORGAN HILL

Vice President
714.935.2322
mhill@voitco.com
Lic #01877356

MIKE HEFNER, SIOR

Executive Vice President
714.935.2331
mhefner@voitco.com
Lic. #00857352

Voit
REAL ESTATE SERVICES

HV HEFNER
VERNICK
TEAM

2400 E. Katella Ave., Suite 750, Anaheim, CA 92806 • 714.978.7880 • 714.978.9431 Fax

Licensed as Real Estate Broker(s) and Salesperson by the CA Bur of Real Estate. The information contained herein has been obtained from sources we deem reliable. While we have no reason to doubt its accuracy, we do not guarantee it. ©2017 Voit Real Estate Services, Inc. All Rights Reserved. License #0133376.

www.VoitCo.com