

1933 NORTH

1933 NORTH MEACHAM
SCHAUMBURG, ILLINOIS



**Premier office
suites from
1,300 -30,432 RSF**

 **TRANSWESTERN** REAL ESTATE SERVICES

Premier Office Environment



50-person, state-of-the-art conferencing facility



Newly updated corridors & common areas



24-hour fitness center equipped with private locker room and shower facilities



Executive underground reserved parking



Impressive lobby with 4-story atrium



Full-service deli

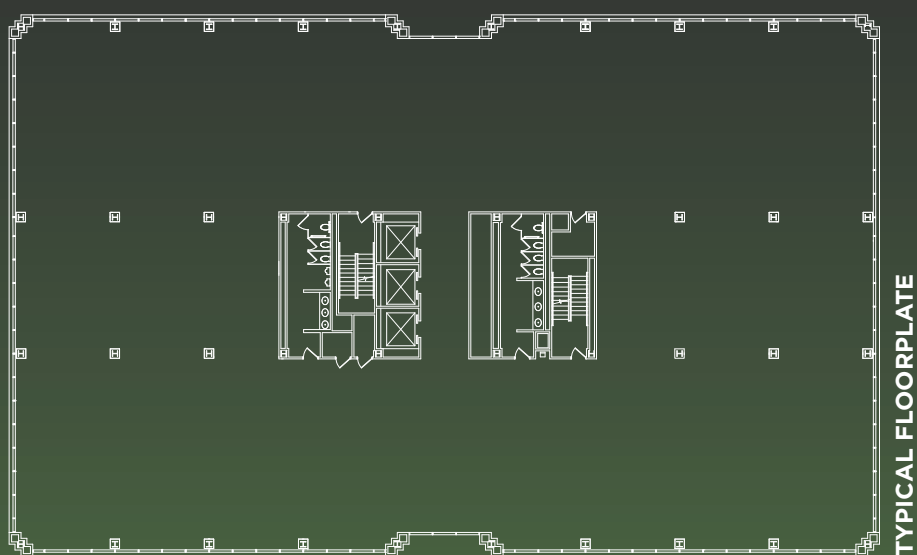
Premier Work-Life Location

- Immediate access to I-90, I-290, I-355 & Route 53
- Completely renovated Embassy Suites hotel onsite
- Located in the center of the new 90 North entertainment district development
- Blocks away from Woodfield Mall, the largest shopping mall in Illinois



1933 NORTH

**1933 NORTH MEACHAM
SCHAUMBURG, ILLINOIS**



JOE STEVENS

joe.stevens@transwestern.com

(847) 840-8743

MICHAEL KRAFT

michael.kraft@transwestern.com

(847) 588-5691