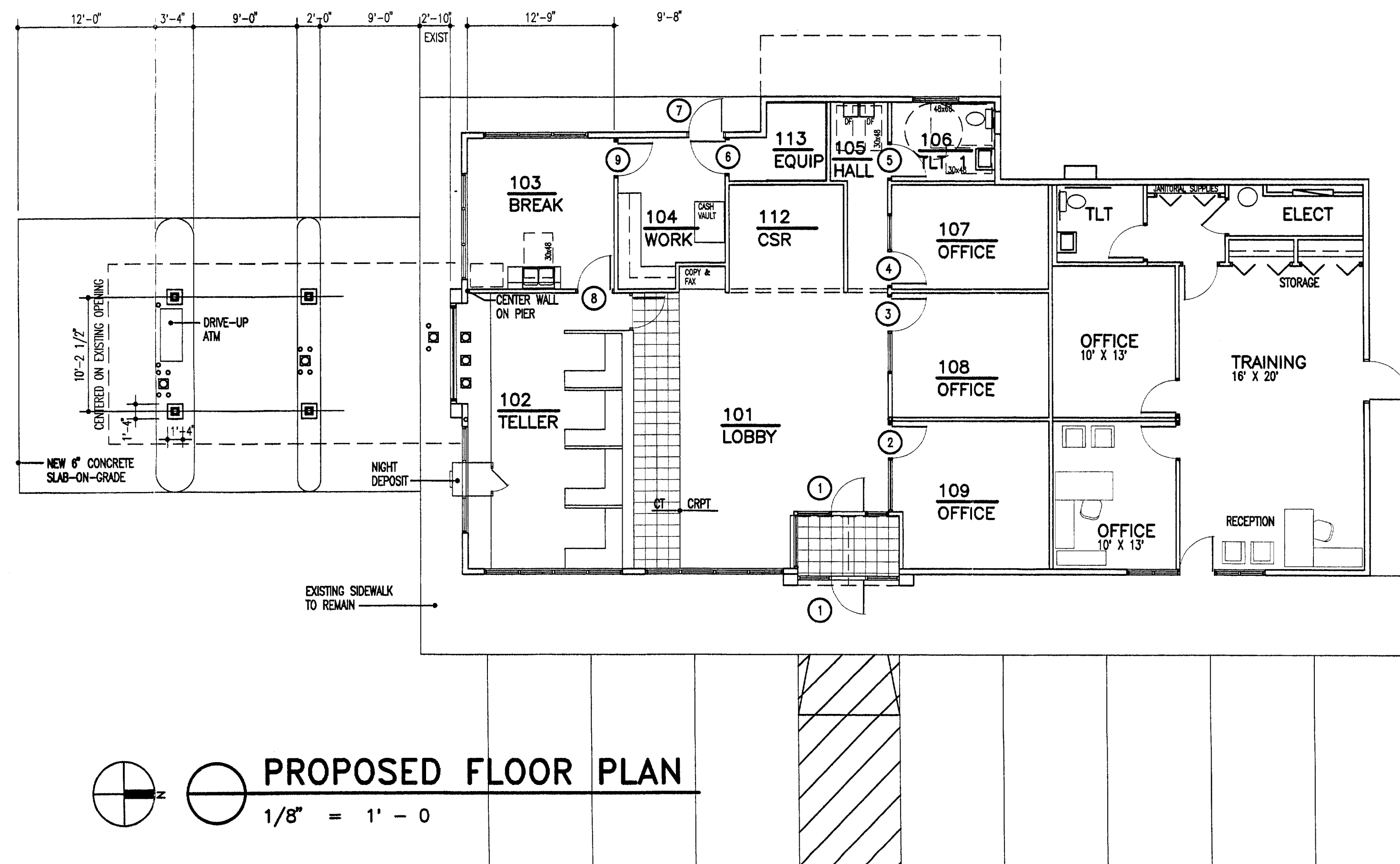
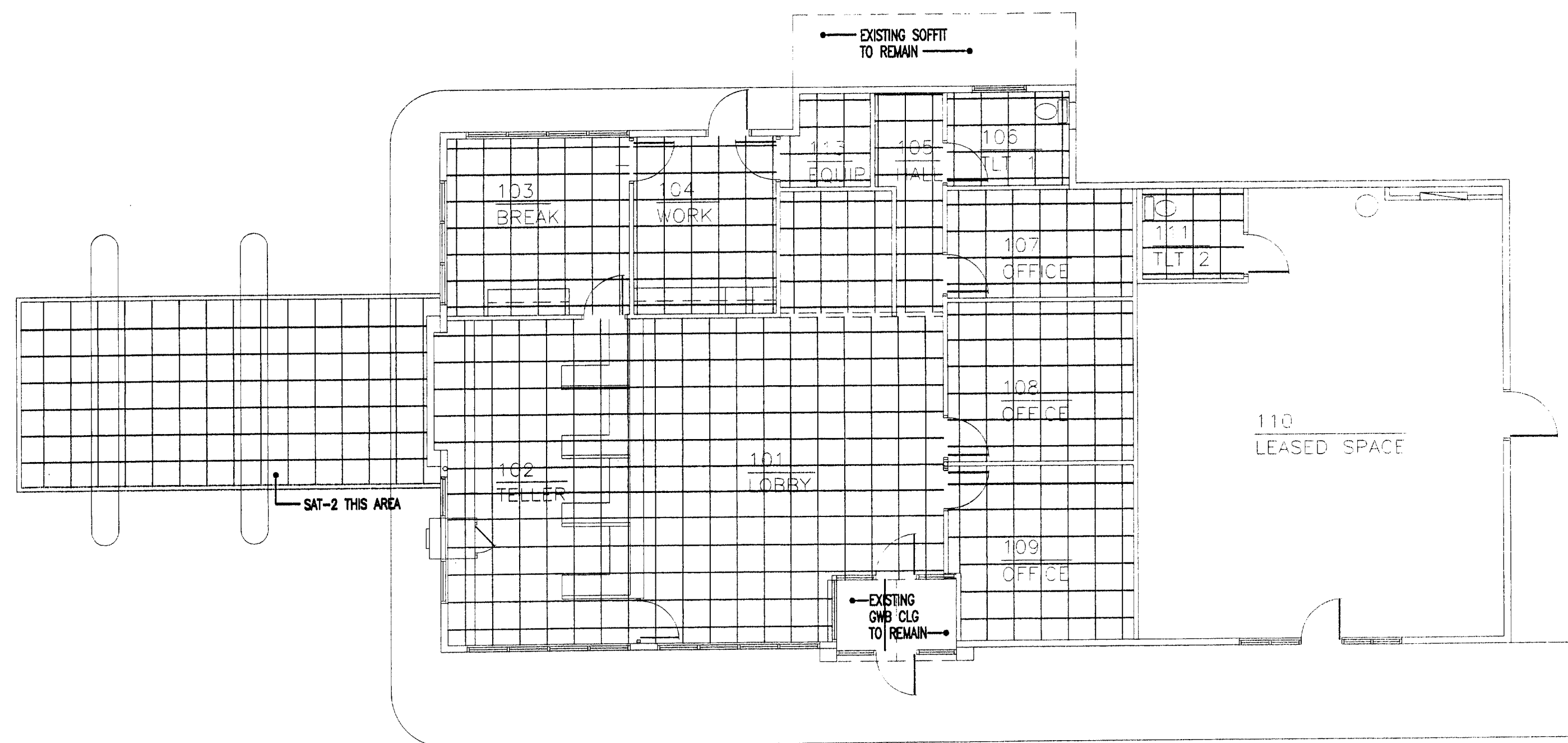
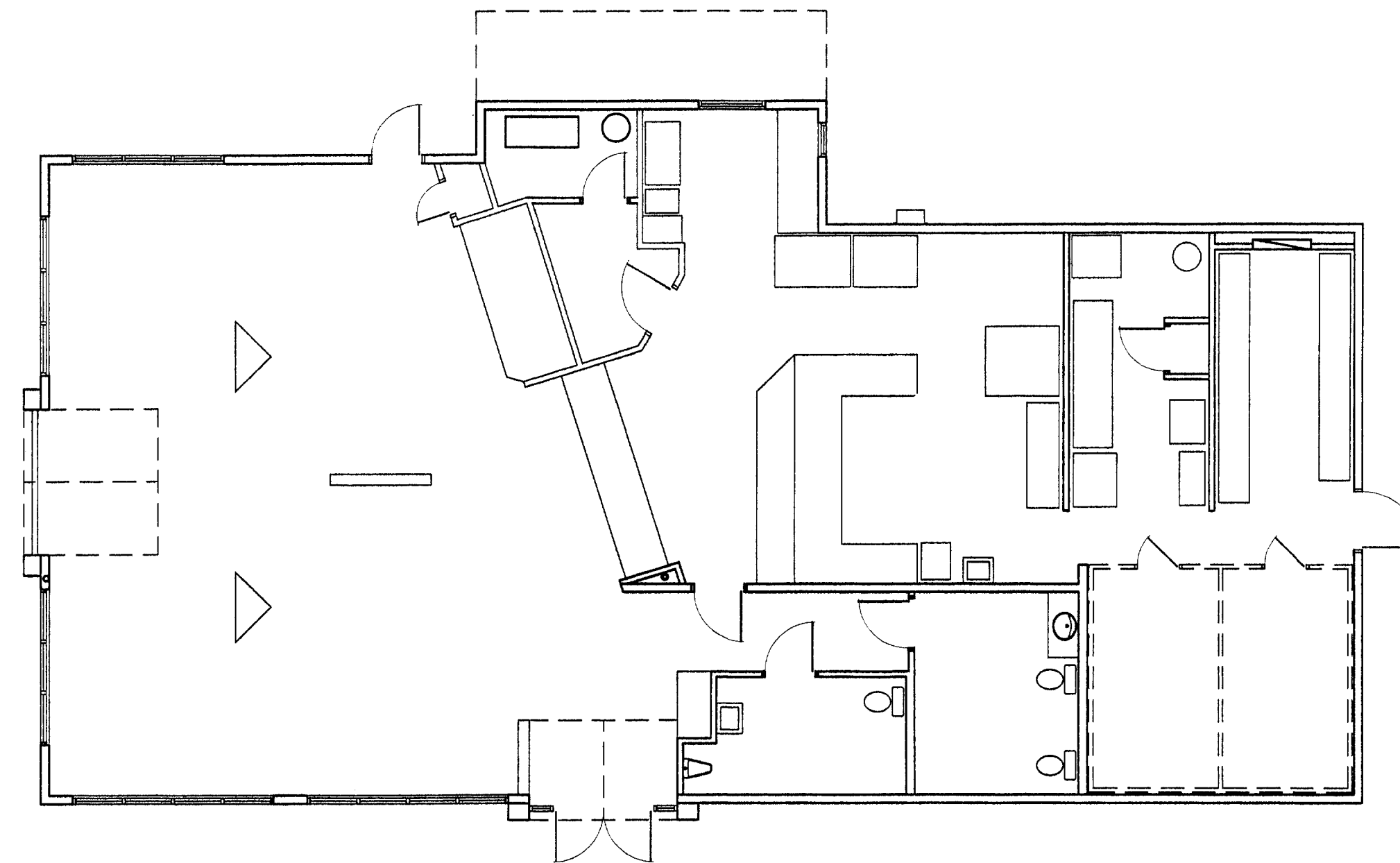
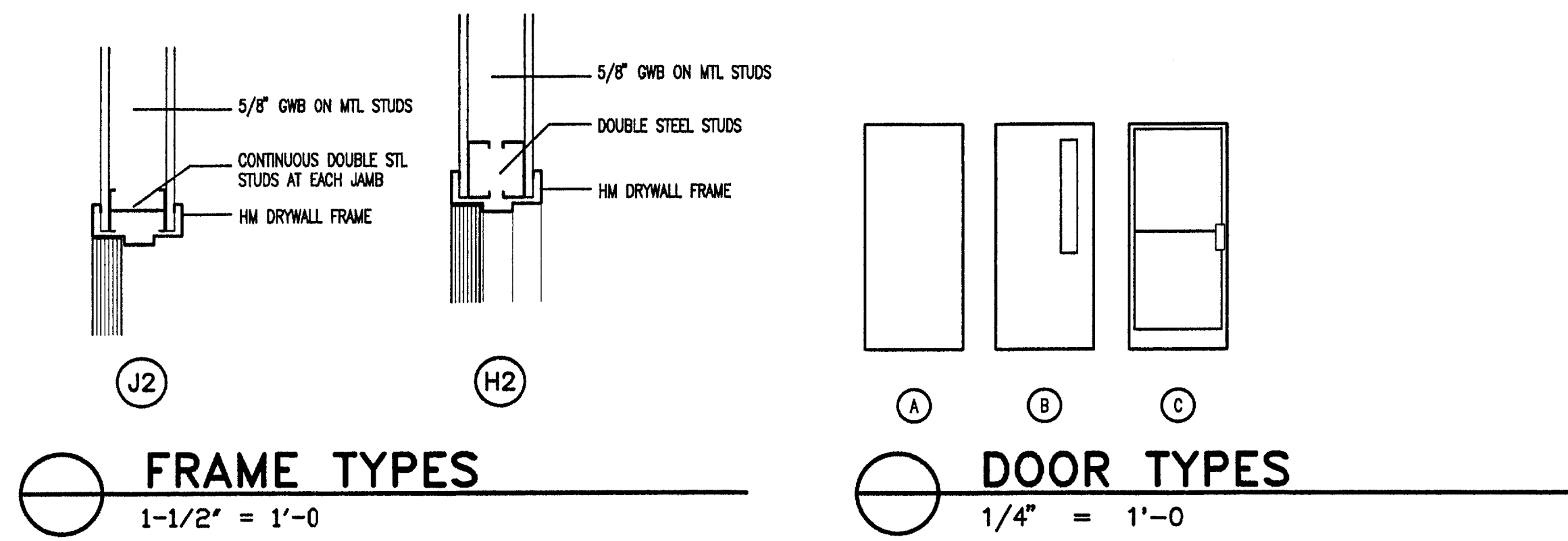


DOOR SCHEDULE													
NO.	DOORS		MATERIAL	TYPE	FRAMES			HDW	LT'L	NOTES	NOTES AND REMARKS		
	SIZE	THK.			MATERIAL	JAMB	HEAD						
01	3-0 X 7-0	1 3/4	ALUMINUM & GLASS	C	ALUMINUM	J2	H2				1	B-LABEL DOOR & FRAME	
02	3-0 X 7-0	1 3/4	WOOD	A	HOLLOW METAL	J1	H1				2	GLAZING A 1/4" TEMPERED B 1/4" WIRE C 1/4" PLATE	
03	3-0 X 7-0	1 3/4	WOOD	A	HOLLOW METAL	J1	H1				3	REMOVE EXISTING ALUM DOOR & FRAME	
04	3-0 X 7-0	1 3/4	WOOD	A	HOLLOW METAL	J1	H1				4		
05	3-0 X 7-0	1 3/4	WOOD	A	HOLLOW METAL	J1	H1				5		
06	3-0 X 7-0	1 3/4	WOOD	B	HOLLOW METAL	J1	H1				6		
07	3-0 X 7-0	1 3/4	HOLLOW METAL	A	HOLLOW METAL	J3	J3			3	4		
08	3-0 X 7-0	1 3/4	WOOD	B	HOLLOW METAL	J1	H1				5		
09	3-0 X 7-0	1 3/4	WOOD	A	HOLLOW METAL	J1	H1				6		
10	3-0 X 7-0	1 3/4	ALUMINUM & GLASS	C	ALUMINUM	J2	H2				7		
11	EXISTING												
12	3-0 X 7-0	1 3/4	WOOD	A	HOLLOW METAL	J1	H1						
13	NOT USED												
14	3-0 X 7-0	1 3/4	ALUMINUM & GLASS	C	ALUMINUM	J2	H2						

ROOM FINISH SCHEDULE											
NO.	ROOM NAME	FLOOR	BASE	WALLS				CEILING	HG'T	NOTES	NOTES AND REMARKS
				NORTH	EAST	SOUTH	WEST				
101	LOBBY	CARPET/CT	CARPET/CT	A	A	A	A	S.A.T.	10'-0"		1 WALL FINISHES
102	TELLER	CARPET	CARPET	A	A	A	A	S.A.T.	10'-0"		A PAINTED GYPSUM BOARD
103	WORK ROOM	CARPET	CARPET	A	A	A	A	S.A.T.	9'-0"		B PAINTED GYPSUM BOARD (EPOXY)
104	BREAK	CARPET	CARPET	A	A	A	A	S.A.T.	9'-0"		C PAINTED CONCRETE BLOCK
105	HALLWAY	CARPET	CARPET	A	A	A	A	S.A.T.	9'-0"		D 3/4" PLYWOOD OVER GYB
106	TOILET 1	VCT	VNYL	A	A	A	A	S.A.T.	9'-0"		E CERAMIC TILE
107	OFFICE	CARPET	CARPET	A	A	A	A	S.A.T.	9'-0"		F PRE FINISHED METAL WALL PANELS
108	OFFICE	CARPET	CARPET	A	A	A	A	S.A.T.	9'-0"		G VINYL COVERED INSULATION
109	OFFICE	CARPET	CARPET	A	A	A	A	S.A.T.	9'-0"		
110	LEASED SPACE	CARPET	CARPET	A	A	A	A	S.A.T.	9'-0"		
111	TOILET 2	VCT	VNYL	A	A	A	A	S.A.T.	9'-0"		
112	CSR	CARPET	CARPET	A	A	A	A	S.A.T.	9'-0"		
113	EQUIPMENT	VCT	VNYL	D	A / D	A	A / D	S.A.T.	9'-0"		



ALL CEILINGS SAT-1 UNLESS OTHERWISE NOTED