

As exclusive leasing agents, we are pleased to offer the following prime space for lease:

585 STEWART AVENUE



Garden City, NY 11530

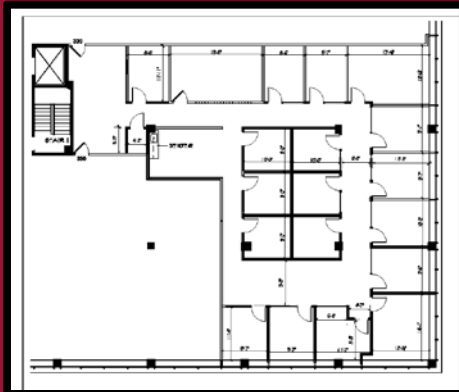
INSTANT OFFICE SPACE AVAILABLE ON STEWART AVE IN GARDEN CITY



NOW PRELEASING

THE SPACE @ GC:

- Fully furnished private offices featuring high-end reception, conference and lounge spaces
- Unlimited high-speed internet and printing
- Keyless 24/7 access
- On site restaurant
- Easy access to major highways and Roosevelt Field Mall
- Multimillion dollar renovation done, which included new lobby, new A/C & Heat, LED light throughout etc.



For more information, please contact:

Kelly Koukou

Executive Managing Director/Principal
516.835.7833

kkoukou@lee-associates.com

leeassociatesnyc.com



COMMERCIAL REAL ESTATE SERVICES

All information supplied is from sources deemed reliable and is furnished subject to errors, omissions, modifications, removal of the listing from sale or lease, and to any listing conditions, including the rates and manner of payment of commissions for particular offerings imposed by principals or agreed by this Company, the terms of which are available to principals or duly licensed brokers. Any square footage dimensions set forth are approximate.