

HESPERIAN BUSINESS PARK



RENOVATIONS UNDERWAY

2286-2298, 2302-2332 & 2512 TRIPALDI WAY | HAYWARD, CA 94545

FOR MORE INFORMATION:

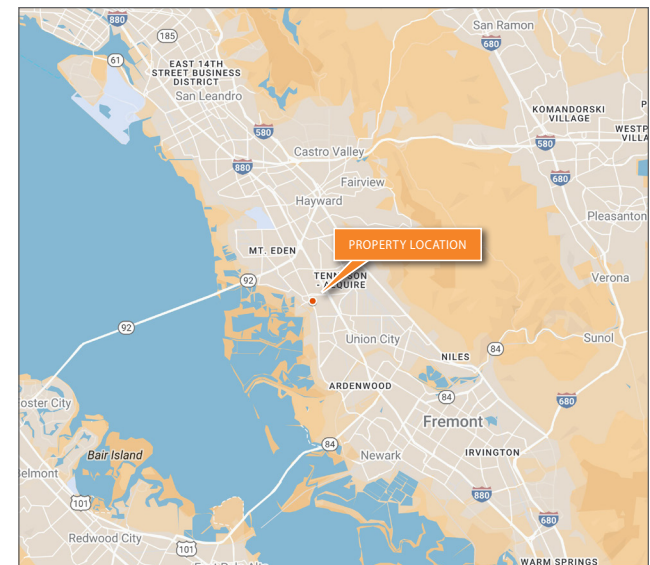
CHRIS SCHOFIELD, SIOR
510-903-7608
cschofield@lee-associates.com
LIC# 01326198 / CORP. ID# 02069956

LEE & ASSOCIATES OAKLAND
COMMERCIAL REAL ESTATE, INC.
555 12th Street, Suite 1725
Oakland, CA 94607
www.lee-associates.com



PROPERTY FEATURES

- 82,562± SF light industrial project
- Extensive exterior improvements planned
- Fully sprinklered
- 18' clear height
- 2.5/1,000 parking ratio
- Ability to expand within business park

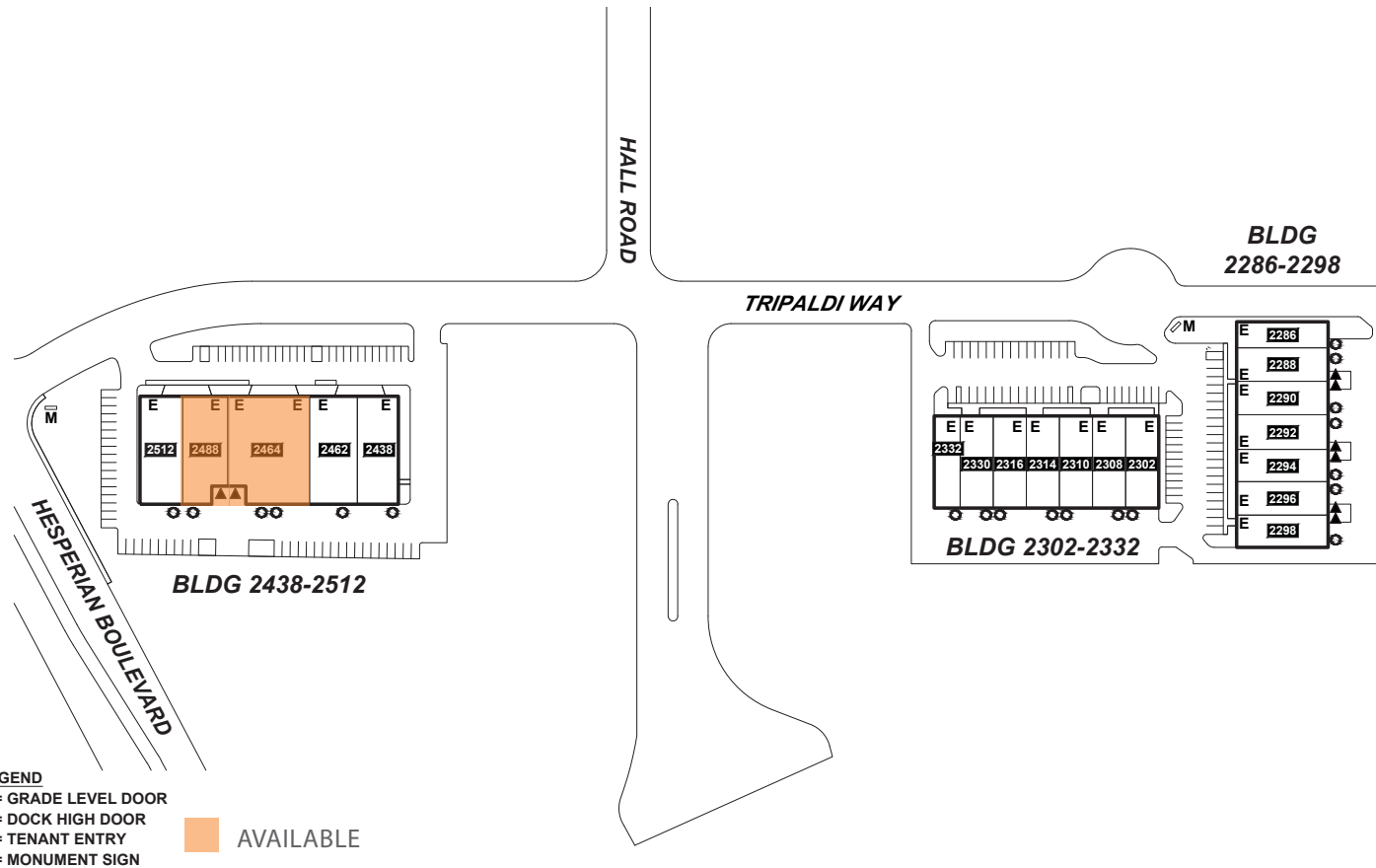


The information contained herein is believed to be accurate but is not warranted as to its accuracy and may change or be updated without notice. Seller or land lord makes no representation as to the environmental condition of the property and recommends purchaser's or tenant's independent investigation.

HESPERIAN BUSINESS PARK

SITE PLAN

UNDER NEW OWNERSHIP



FOR MORE INFORMATION

CHRIS SCHOFIELD, SIOR
 510-903-7608
 cschofield@lee-associates.com
 LIC# 01326198 / CORP. ID# 02069956

LEE & ASSOCIATES OAKLAND
 COMMERCIAL REAL ESTATE, INC.
 555 12th Street, Suite 1725
 Oakland, CA 94607
 www.lee-associates.com

AVAILABILITIES

SUITE	TOTAL SF±	OFFICE /WAREHOUSE SF ±	FEATURES
2488	5,284	1,617 / 3,667	1 grade level door, 1 dock high door, 16'-18' clear height Available July 1, 2026
2464	11,340	3,211 / 8,129	1 grade level door, 1 dock high door, 16'-18' clear height Available November 1, 2026

HESPERIAN BUSINESS PARK
 TRIPALDI WAY
 HAYWARD, CA 94545



HESPERIAN BUSINESS PARK

UNDER NEW OWNERSHIP



FOR MORE INFORMATION

CHRIS SCHOFIELD, SIOR
510-903-7608
cschofield@lee-associates.com
LIC# 01326198 / CORP. ID# 02069956

LEE & ASSOCIATES OAKLAND
COMMERCIAL REAL ESTATE, INC.
555 12th Street, Suite 1725
Oakland, CA 94607
www.lee-associates.com

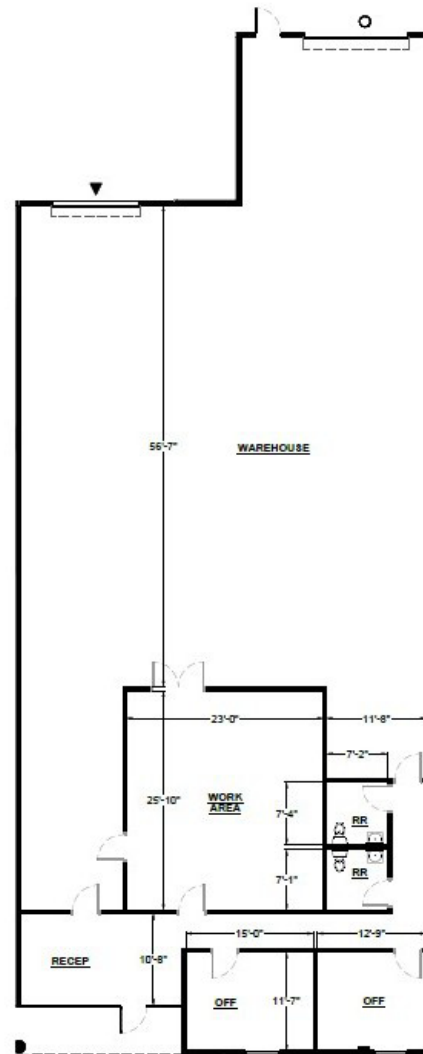
HESPERIAN BUSINESS PARK
TRIPALDI WAY
HAYWARD, CA 94545

 **LEE &
ASSOCIATES**
COMMERCIAL REAL ESTATE SERVICES

2488 TRIPALDI WAY

5,284 SF / 1,617 SF OFFICE / 3,667 WAREHOUSE

UNDER NEW OWNERSHIP



FOR MORE INFORMATION

CHRIS SCHOFIELD, SIOR
510-903-7608
cschofield@lee-associates.com
LIC# 01326198 / CORP. ID# 02069956

LEE & ASSOCIATES OAKLAND
COMMERCIAL REAL ESTATE, INC.
555 12th Street, Suite 1725
Oakland, CA 94607
www.lee-associates.com

HESPERIAN BUSINESS PARK
TRIPALDI WAY
HAYWARD, CA 94545



Hesperian Business Park

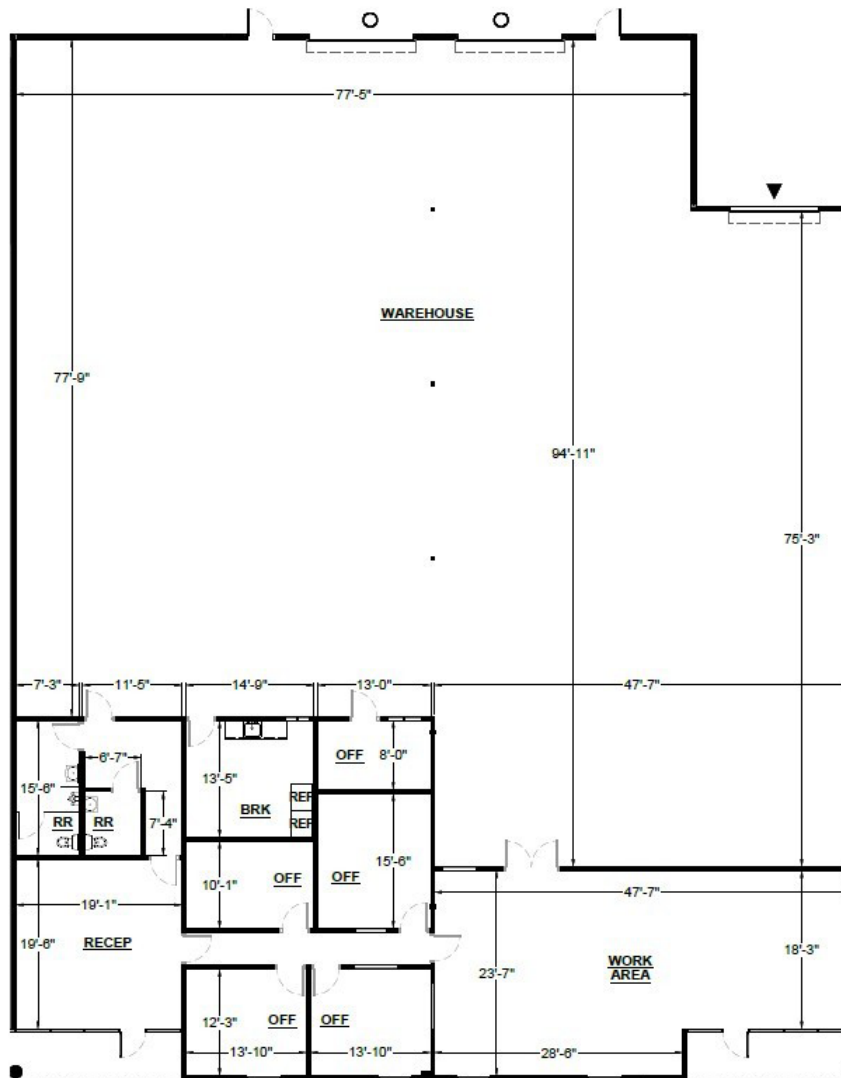
2488 Tripaldi Way
Hayward, CA 94545



2464 TRIPALDI WAY

11,340 SF / 3,211 SF OFFICE / 8,129 WAREHOUSE

UNDER NEW OWNERSHIP



FOR MORE INFORMATION

CHRIS SCHOFIELD, SIOR
510-903-7608
cschofield@lee-associates.com
LIC# 01326198 / CORP. ID# 02069956

LEE & ASSOCIATES OAKLAND
COMMERCIAL REAL ESTATE, INC.
555 12th Street, Suite 1725
Oakland, CA 94607
www.lee-associates.com

HESPERIAN BUSINESS PARK
TRIPALDI WAY
HAYWARD, CA 94545



Hesperian Business Park

2464 Tripaldi Way
Hayward, CA 94545

