



**PAD READY LOTS IN PRIME COMMERCIAL LOCATION**

**LAND FOR SALE  
±1.14 & ±1.93 AC**

SC Hwy 123 & SC Hwy 153 Intersection  
Easley, SC 29640



**LEE & ASSOCIATES**  
GREENVILLE/SPARTANBURG

**Kevin Bentley, SIOR**  
EVP/Principal  
864.444.1196  
kbentley@lee-associates.com

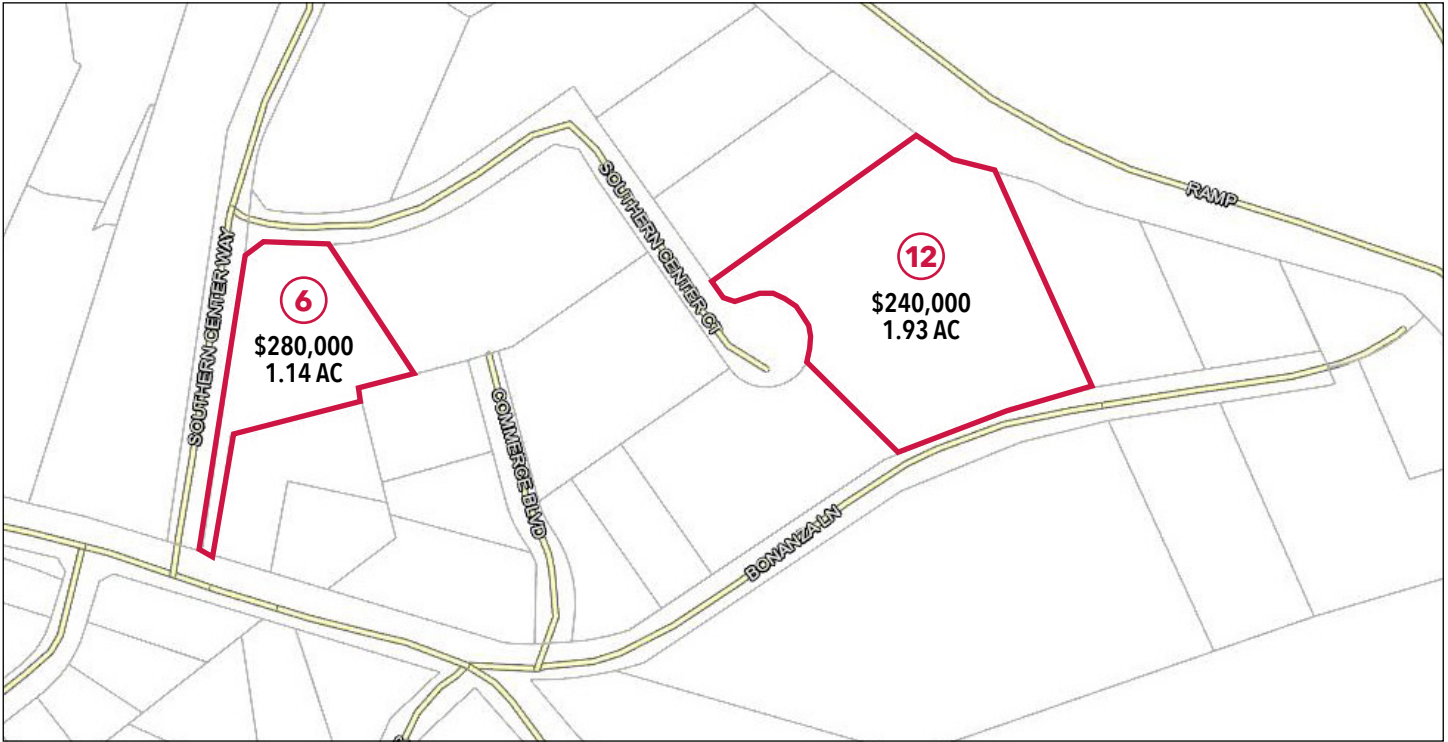
**Justin Bentley**  
Associate  
864.449.1059  
jrbentley@lee-associates.com

**864.704.1040**  
LeeUpstate.com

**Two (2) PAD  
Ready Lots For  
Sale & Ready for  
Development**

- Excellent Visibility from SC Hwy 123 & 153
- All Utilities on Site (Public Sewer & Water)
- Ideal for Retail, Office or Restaurant
- Nearby Retailers & Restaurants Include: Golden Corral, Outback Steakhouse, Topsy Taco, Hampton Inn, Academy Sports, Walmart, and Kohl's among others

# PROPERTY OVERVIEW



POPULATION	3 MILE	5 MILE	10 MILE
2022 Population	21,559	61,367	250,729
2027 Population Projection	22,859	65,721	272,906
Annual Growth 2010-2022	0.7%	0.9%	1.1%

HOUSEHOLDS	3 MILE	5 MILE	10 MILE
2022 Households	8,490	23,916	97,787
2027 Household Projection	9,015	25,625	106,480
Annual Growth 2010-2022	0.9%	0.9%	0.8%
Avg Household Income	\$80,222	\$74,065	\$76,950
Median Household Income	\$66,051	\$57,412	\$52,711



# LOT 6 OVERVIEW

LOT 6



## Lot 6 Highlights

- Located on the Corner of Cardinal Drive & Southern Center Way
- Included in Southern Center
- Beside Hampton Inn Easley
- Adjacent to Outback Steakhouse, Golden Corral, & Topsy Taco
- Tax Map #: 5039-20-92-9208

**ASKING PRICE: \$280,000**

**LOT SIZE: 1.14 AC**



# LOT 12 OVERVIEW

LOT 12



## Lot 12 Highlights

- Located on the cul-de-sac of Southern Center Ct
- Included in Southern Center
- Beside Foothill Child Development Center
- Adjacent to Hampton Inn Easley
- Portion of Tax Map # 5049-17-02-7269
- Possible to Combine 11 & 12 For a Total of 3.13 AC

**ASKING PRICE: \$240,000**

**LOT SIZE: 1.93 AC**





# LEARN MORE GIVE US A CALL



LEE & ASSOCIATES  
GREENVILLE/SPARTANBURG

**864.704.1040**  
**LeeUpstate.com**

**GREENVILLE OFFICE**  
201 W. McBee Ave, Suite 400  
Greenville, SC 29601

**SPARTANBURG OFFICE**  
320 E. Main Street, Suite 430  
Spartanburg, SC 29302

All information furnished regarding the properties and information in this packet is from sources deemed reliable, but no warranty or representation is made to the accuracy thereof and same is submitted to errors, omissions, change of price, rental or other conditions prior to sale, lease or financing or withdrawal without notice. No liability of any kind is to be imposed on the broker herein.



**Kevin Bentley, SIOR**  
EVP/Principal  
864.444.1196  
kbentley@lee-associates.com



**Justin Bentley**  
Associate  
864.449.1059  
jbentley@lee-associates.com