



**CUSHMAN &  
WAKEFIELD**

# FOR LEASE 2969 PROSPECT PARK DRIVE RANCHO CORDOVA, CA



## BUILDING HIGHLIGHTS

- 46,182 SF Fully Renovated Two- Story Office Building
- Beautifully Landscaped Campus Environment with Water Features
- Located in the Highway 50 Corridor in Prospect Park
- 4.0/1,000 Parking, 36 Covered (Total Project)
- Fiber Optics to the Project
- Walking distance to nearby café
- Professionally managed by **KCM** Property Management



## LEASE TERMS

LEASE RATES	<b>\$1.85/RSF</b>
TENANT IMPROVEMENTS	<b>Negotiable on a suite by suite basis</b>
PARKING	<b>Free, 4/1000 SF (Covered parking available)</b>

**CHRIS SCHWARZE**  
Executive Director  
+1 916 288 4803  
chris.schwarze@cushwake.com  
LIC #01291261

**ZACH MOSLE, ccim**  
Director  
+1 916 329 1543  
zach.mosle@cushwake.com  
LIC #01924595

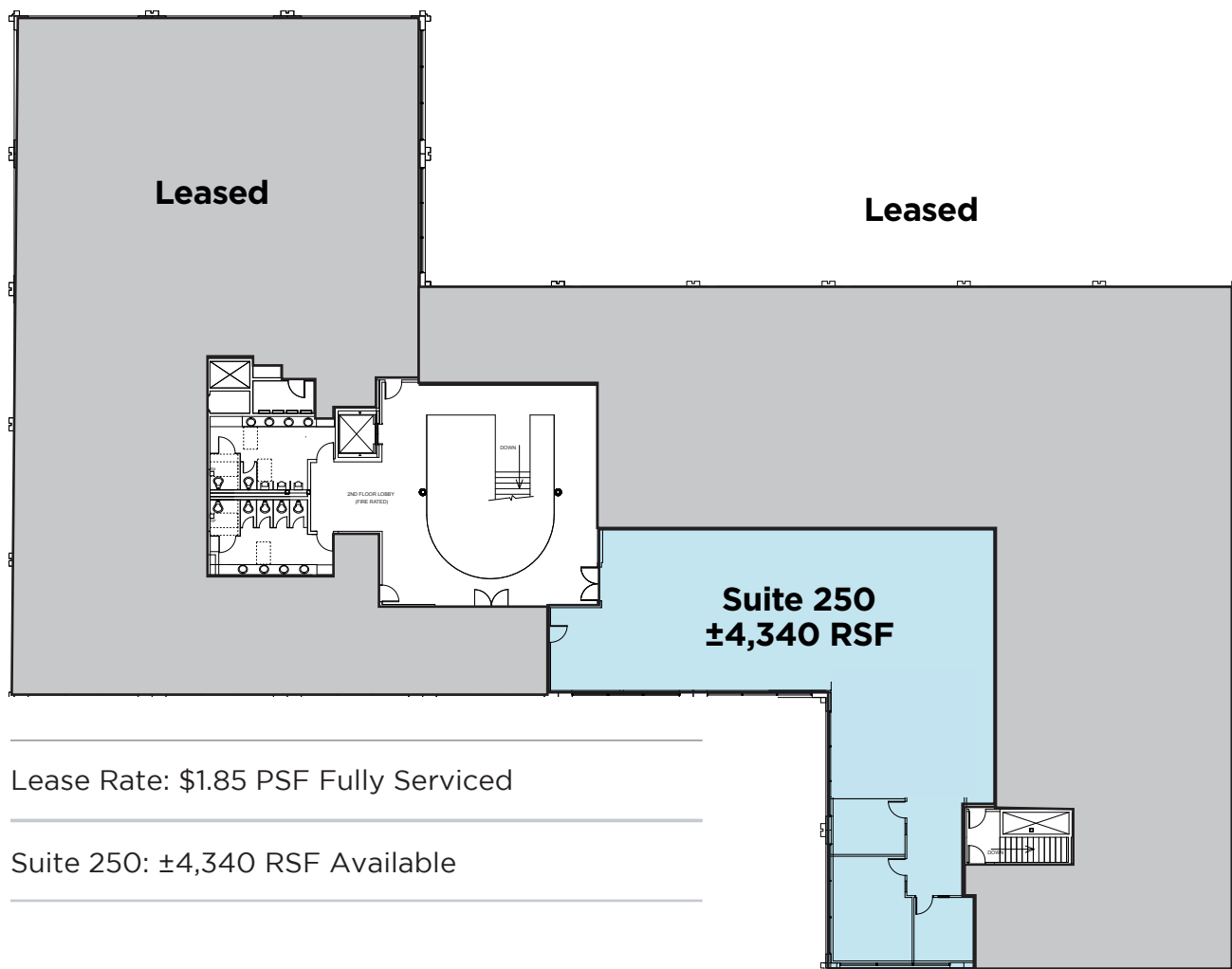
400 Capitol Mall,  
Suite 1800  
Sacramento, California 95814  
main +1 916 288 4800  
**cushmanwakefield.com**



**CUSHMAN &  
WAKEFIELD**

**FOR LEASE**  
**2969 PROSPECT PARK DRIVE**  
**RANCHO CORDOVA, CA**

**2<sup>ND</sup> FLOOR**



Lease Rate: \$1.85 PSF Fully Serviced

Suite 250: ±4,340 RSF Available

**CHRIS SCHWARZE**

Executive Director  
+1 916 288 4803  
chris.schwarze@cushwake.com  
LIC #01291261

**ZACH MOSLE, CCIM**

Director  
+1 916 329 1543  
zach.mosle@cushwake.com  
LIC #01924595

400 Capitol Mall,  
Suite 1800  
Sacramento, California 95814  
main +1 916 288 4800  
**cushmanwakefield.com**





**CUSHMAN &  
WAKEFIELD**

**FOR LEASE**  
**2969 PROSPECT PARK DRIVE**  
**RANCHO CORDOVA, CA**

## GALLERY



**CHRIS SCHWARZE**  
Executive Director  
+1 916 288 4803  
chris.schwarze@cushwake.com  
LIC #01291261

**ZACH MOSLE, CCIM**  
Director  
+1 916 329 1543  
zach.mosle@cushwake.com  
LIC #01924595

400 Capitol Mall,  
Suite 1800  
Sacramento, California 95814  
main +1 916 288 4800  
**cushmanwakefield.com**

Cushman & Wakefield Copyright 2024. No warranty or representation, express or implied, is made to the accuracy or completeness of the information contained herein, and same is submitted subject to errors, omissions, change of price, rental or other conditions, withdrawal without notice, and to any special listing conditions imposed by the property owner(s). As applicable, we make no representation as to the condition of the property (or properties) in question.

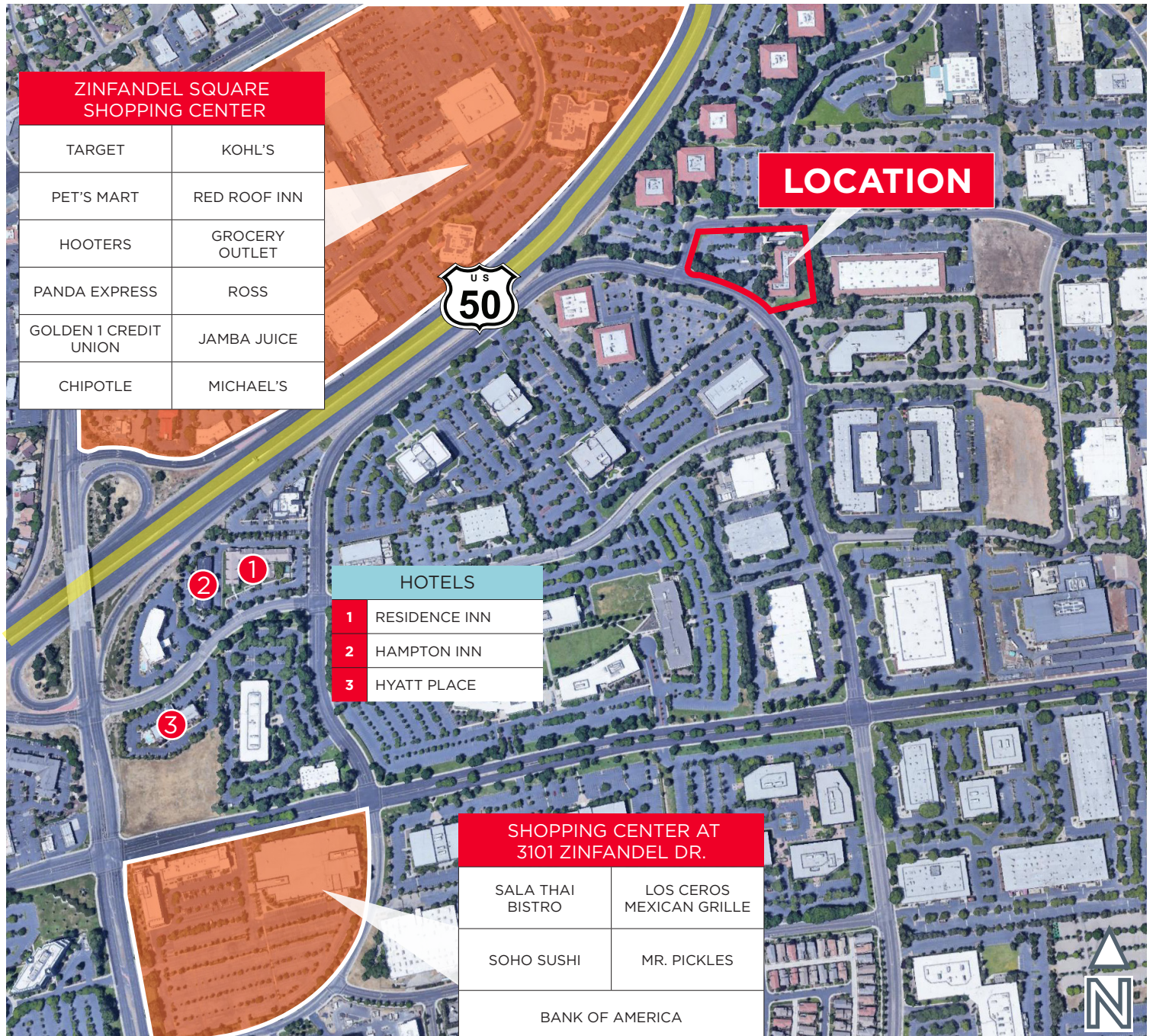




**CUSHMAN &  
WAKEFIELD**

# FOR LEASE 2969 PROSPECT PARK DRIVE RANCHO CORDOVA, CA

## AERIAL



**CHRIS SCHWARZE**  
Executive Director  
+1 916 288 4803  
chris.schwarze@cushwake.com  
LIC #01291261

**ZACH MOSLE, CCIM**  
Director  
+1 916 329 1543  
zach.mosle@cushwake.com  
LIC #01924595

400 Capitol Mall,  
Suite 1800  
Sacramento, California 95814  
main +1 916 288 4800  
[cushmanwakefield.com](http://cushmanwakefield.com)