

# North Florida Office Building

10050 N Florida Ave, Tampa, FL 33612



## FULL FLOOR AVAILABILITY

**25,000 Square Feet**  
per floor

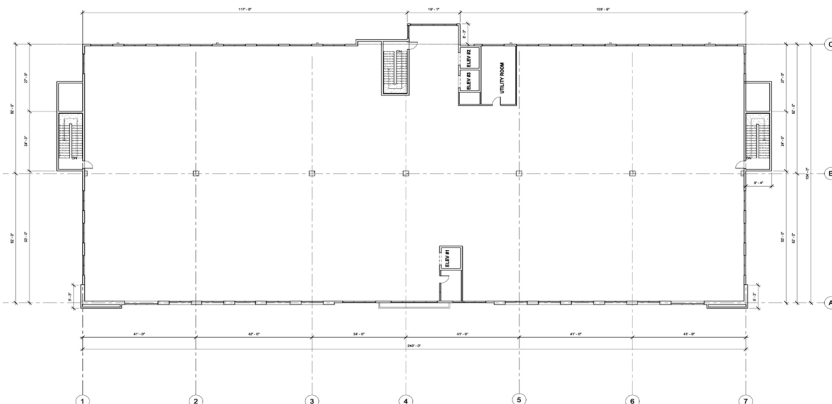
### AMENITIES

- 3 Story Office Building
- Single Tenant Floor Available
- 75,000 Square Feet
- Ideal for Government Use
- Ample Free Surface Parking at 6 Spaces per 1,000 SF
- Less than 1 Mile from Floriland Mall/FI Dept of Children & Families
- Heavily Trafficked Location with North Florida Signage Opportunity
- Northwest Tampa Submarket
- Located off I-275 North of Busch Blvd & South of Fowler Avenue

- 12 Foot Ceilings with Floor to Ceiling Windows
- Ample Free Surface Parking

### Floor Plan

- 1st Floor - LEASED
- 2nd Floor - 25,000 SF
- 3rd Floor - 25,000 SF (Shown)



For more information, please contact:

**Angela Odell**

Managing Director

+1 813 514 2435

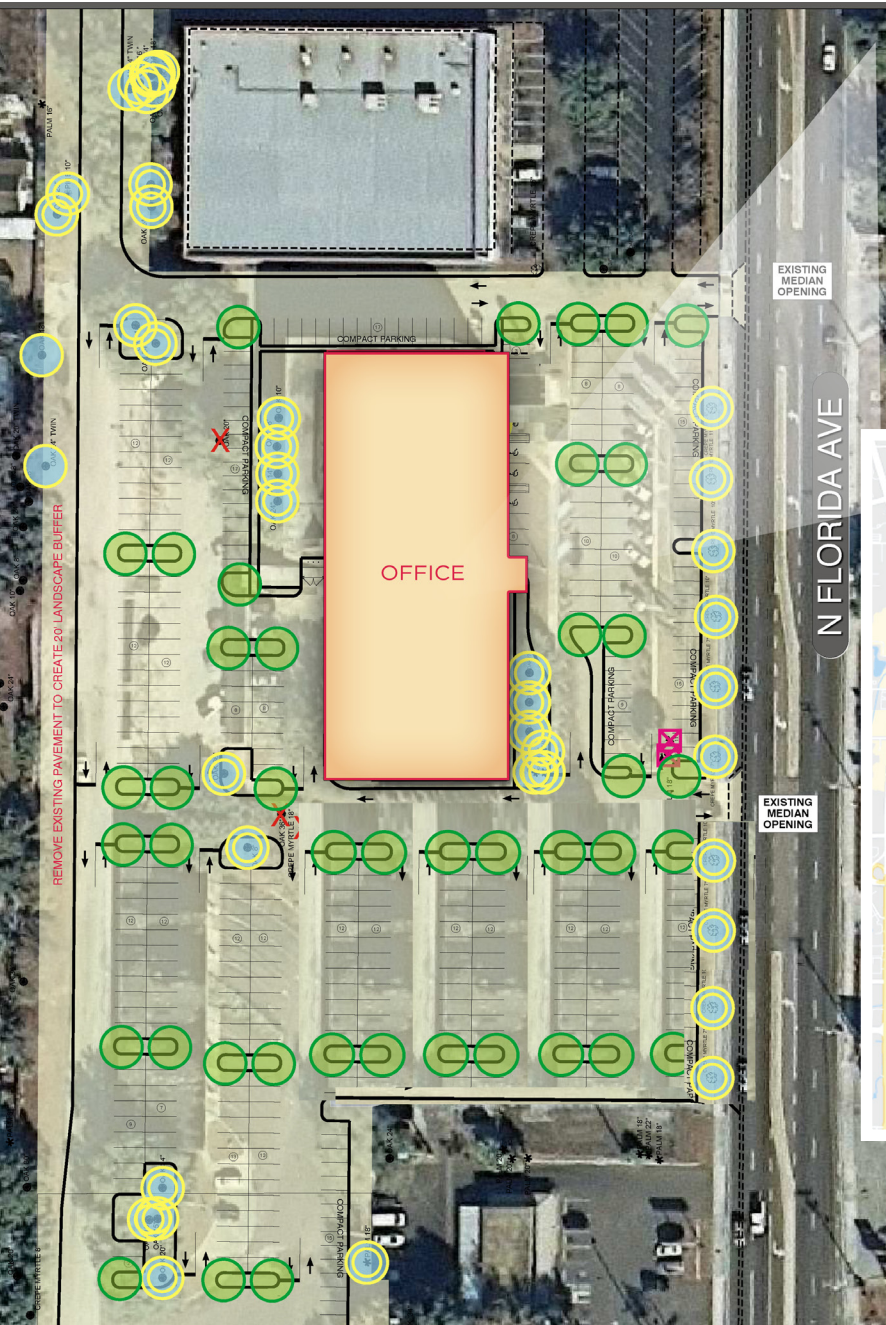
[angela.odell@cushwake.com](mailto:angela.odell@cushwake.com)



ACQUISITION • DEVELOPMENT • MANAGEMENT

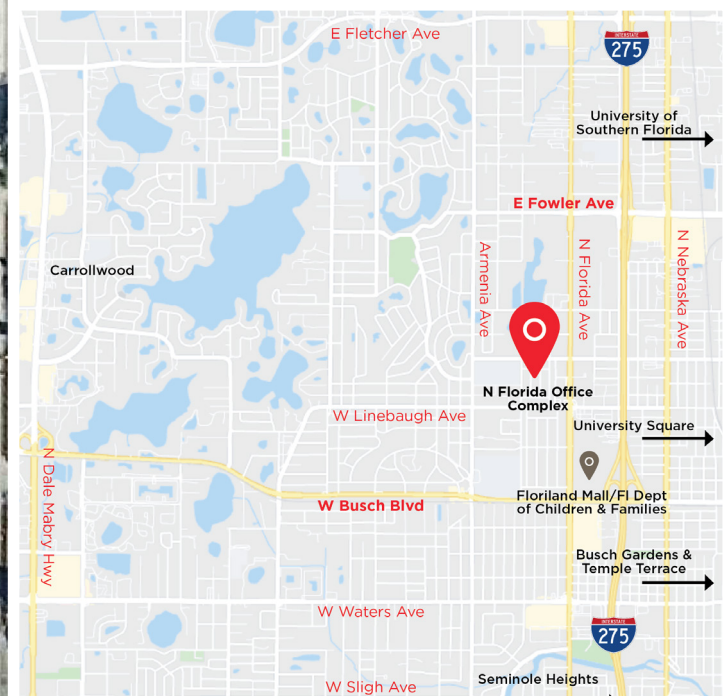
# North Florida Office Building

10050 N Florida Ave, Tampa, FL 33612



## Demographics

- 26,000 - N Florida from Busch to Linebaugh
- 23,500 - N Florida from Linebaugh to Fowler
- Population within 5 Miles > 348,000
- Households within 5 Miles > 55,500
- Businesses within 5 Miles > 138,850



For more information, please contact:

**Angela Odell**

Managing Director

+1 813 514 2435

[angela.odell@cushwake.com](mailto:angela.odell@cushwake.com)



ACQUISITION • DEVELOPMENT • MANAGEMENT