

# FOR SUBLEASE

## 4.6-Acre Trailer Yard

401 Telfair Road, Savannah, GA 31415

RATE: \$20,000/MONTH (NNN)

MORE INFORMATION:

**STEPHEN EZELLE, SIOR**

Partner

+1 912 441 3083

[sezelle@gilbertezelle.com](mailto:sezelle@gilbertezelle.com)

TELFAIR ROAD

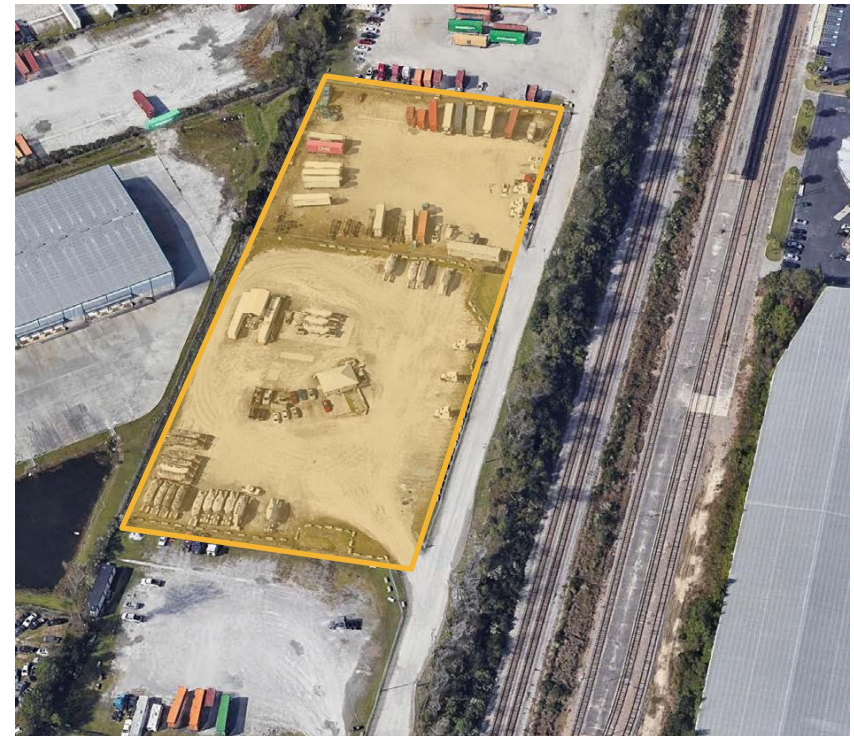
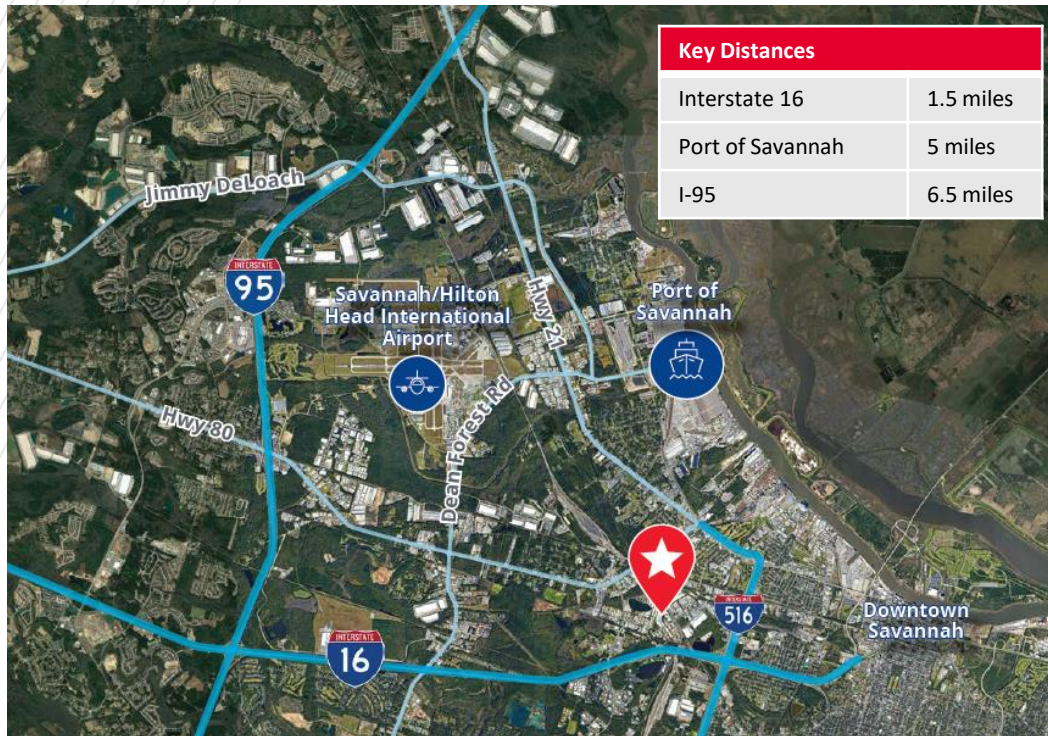


CUSHMAN &  
WAKEFIELD

**GILBERT &  
EZELLE**



# 401 Telfair Rd • 4.6-Acre Trailer Yard



- ±4.6-acre industrial yard for sublease
- ±1,000 SF office building
- Fenced with utilities available
- Yard in excellent condition with maintained gravel and concrete dolly pads
- Located within 5 miles from the Garden City Terminal



FOR INFORMATION:

**STEPHEN EZELLE, SIOR, CCIM**

Partner

+1 912 441 3083

[sezelle@gilbertezelle.com](mailto:sezelle@gilbertezelle.com)

[www.gilbertezelle.com](http://www.gilbertezelle.com)

TELFAR ROAD