

For lease

2822 Commerce Park Drive
Orlando, FL

10,092 SF and 20,312 SF Available

Owned by



Southridge Commerce Park II

Available now 30,404 SF



Two suites available:
Suite 100: 10,092 SF & Suite 800: 20,312 SF



14' ceilings throughout



Open exposed ceilings with aluminum wrapped AC ducts



Class A building



Parking ratio 4.0/1000



Lease rate: \$17.00/s.f. NNN



Estimated CAM \$4.17/s.f.



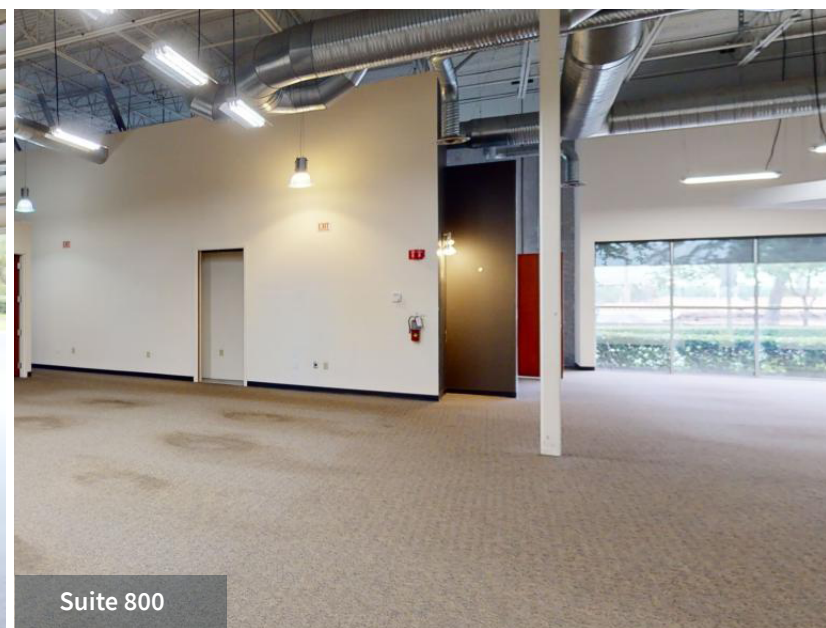
Immediate access to John Young Pkwy, Orange Blossom Trail, SR 528, and the Florida Turnpike



Suite 800



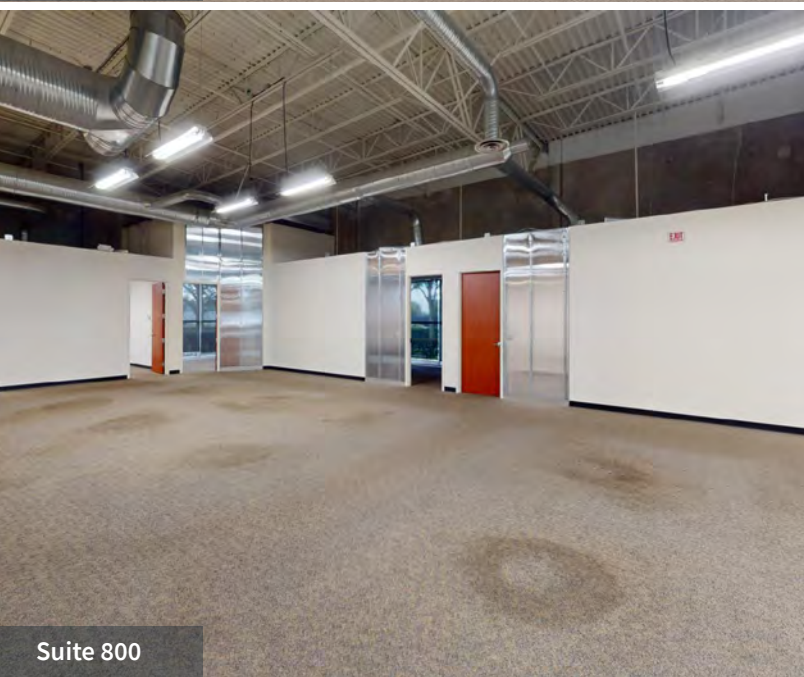
Suite 800



Suite 800



Suite 800



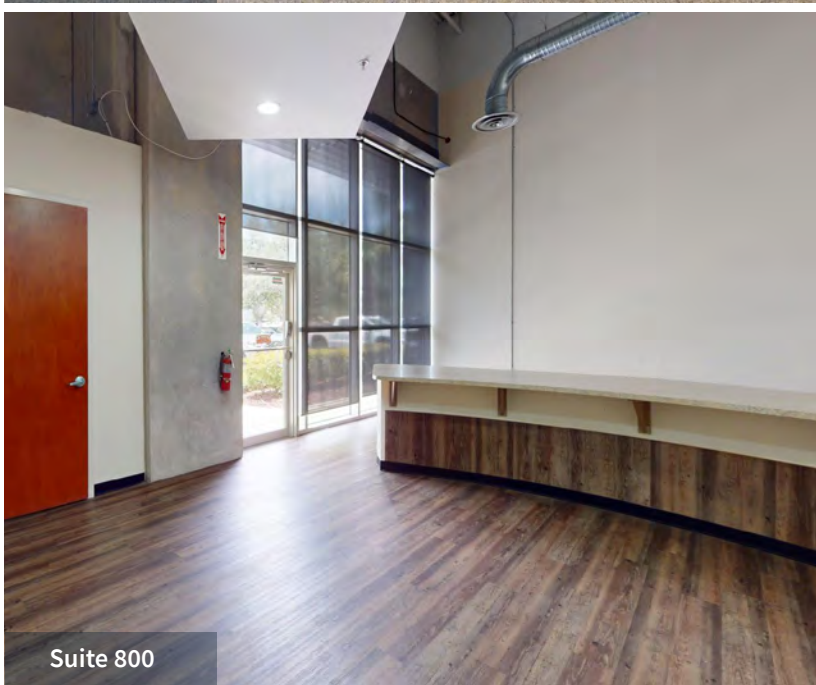
Suite 800



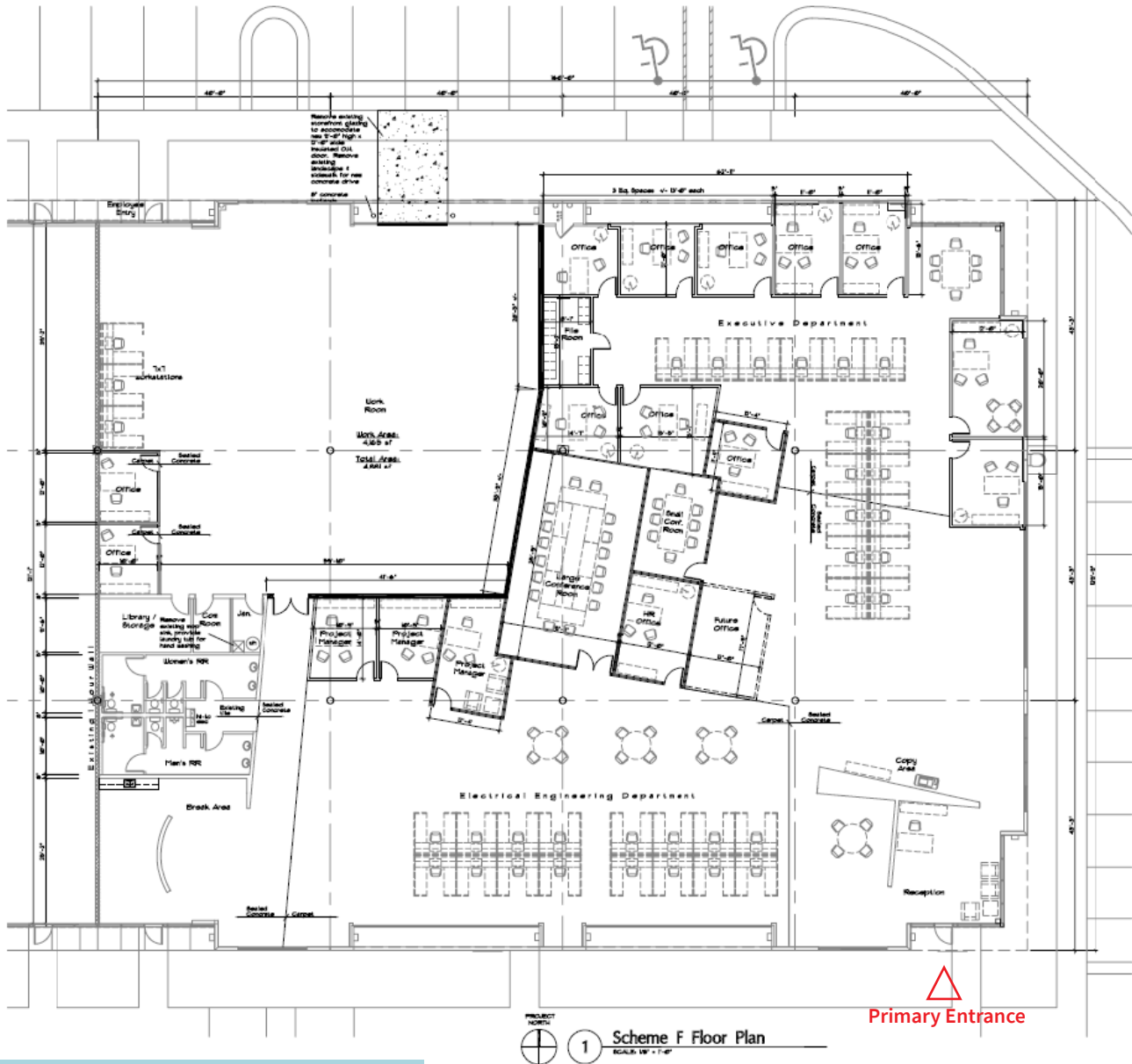
Suite 800



Suite 800

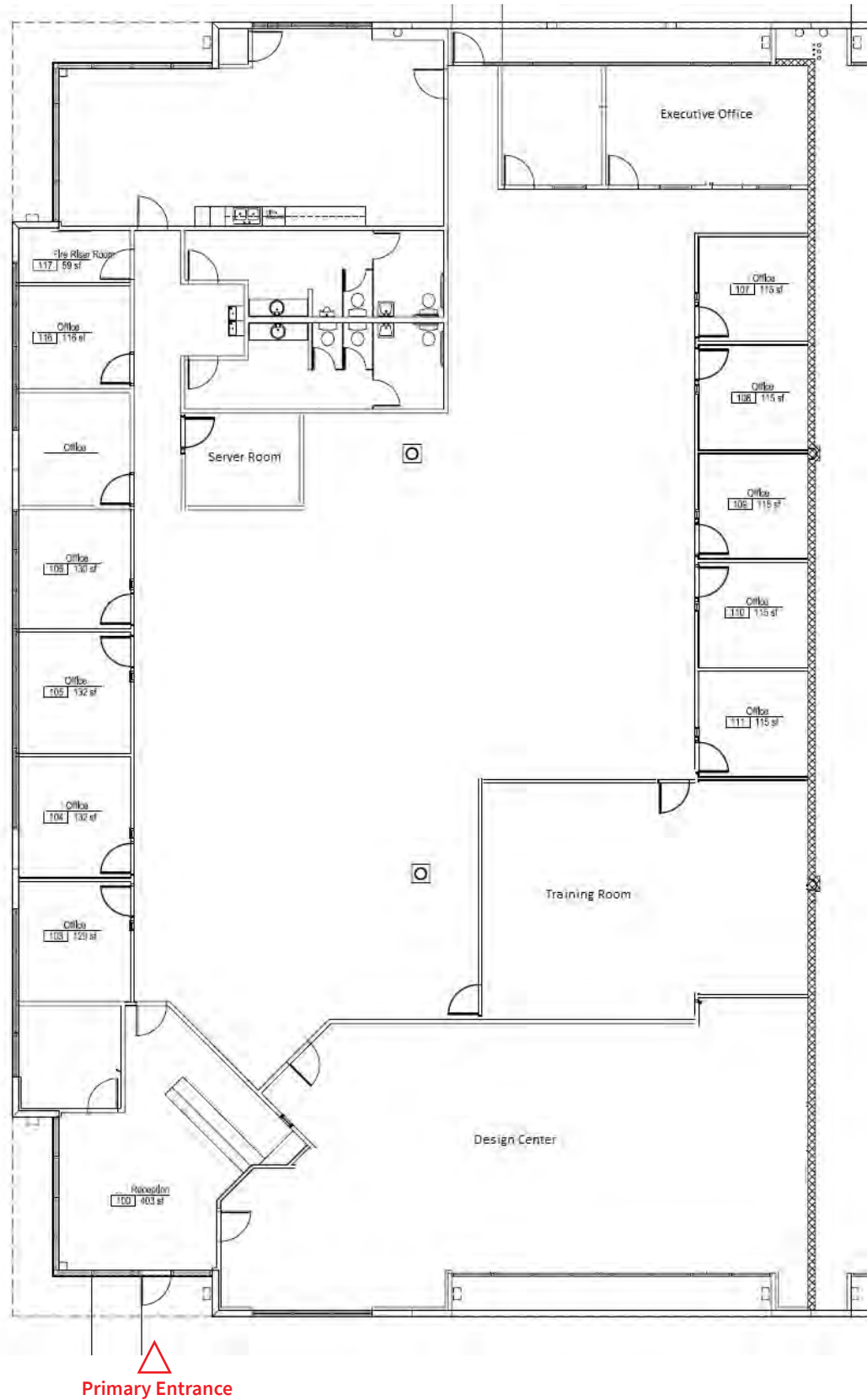


Suite 800

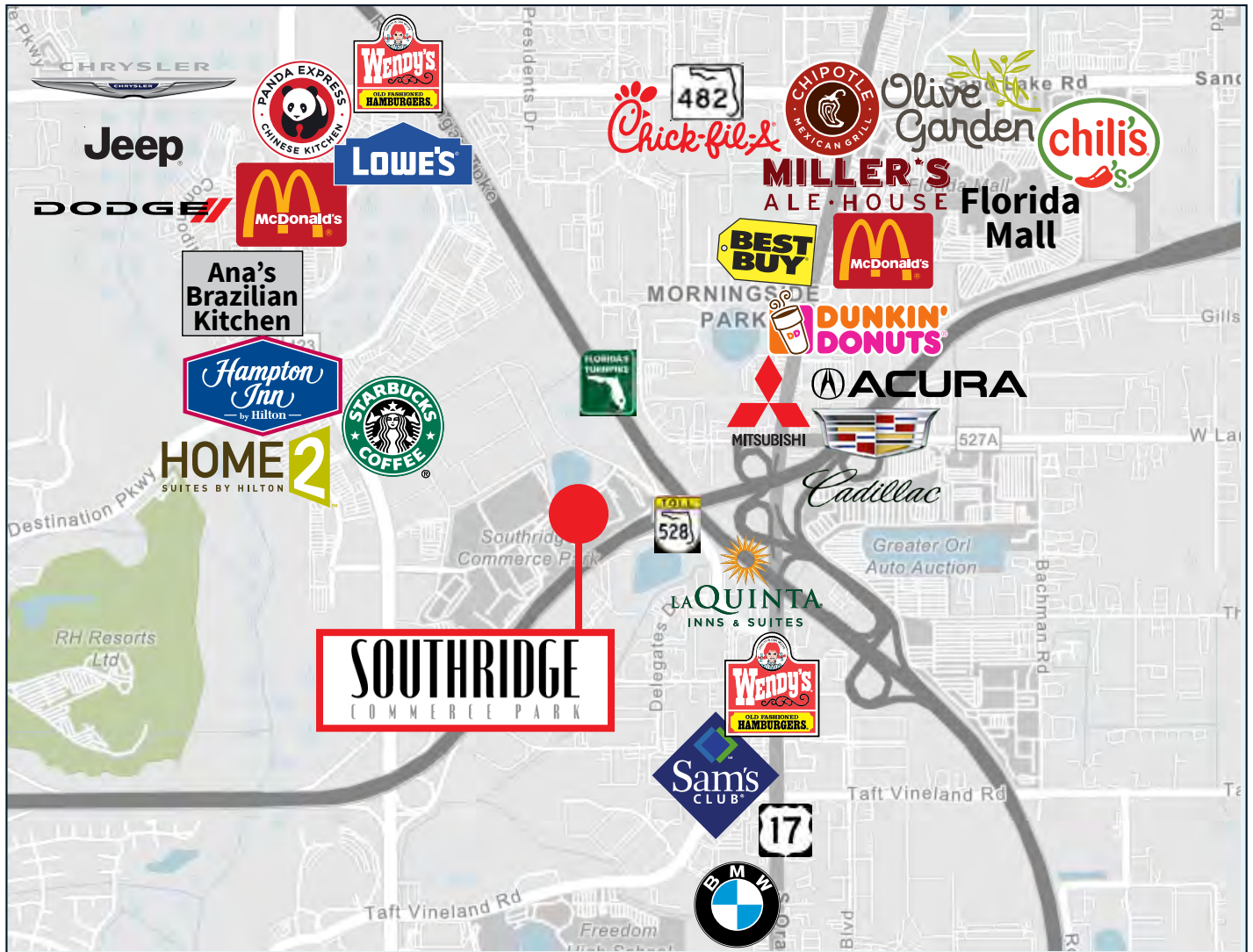


Click here for a virtual tour of Suite 800





Suite 100: 10,092 SF
Available October 1, 2025



JLL.com

Nathan Eissler

Executive Vice President

Nathan.Eissler@jll.com

+1 407 982 8768

Cody Manzella

Executive Vice President

Cody.Manzella@jll.com

+1 407 982 8542

Although information has been obtained from sources deemed reliable, neither Owner nor JLL makes any guarantees, warranties or representations, express or implied, as to the completeness or accuracy as to the information contained herein. Any projections, opinions, assumptions or estimates used are for example only. There may be differences between projected and actual results, and those differences may be material. The Property may be withdrawn without notice. Neither Owner nor JLL accepts any liability for any loss or damage suffered by any party resulting from reliance on this information. If the recipient of this information has signed a confidentiality agreement regarding this matter, this information is subject to the terms of that agreement. ©2025 Jones Lang LaSalle IP, Inc. All rights reserved.