

BLACKBURN LANDING INDUSTRIAL CONDOMINIUMS



2 EAST EXTERIOR ELEVATION



BLACKBURN LANDING

AN INDUSTRIAL CONDOMINIUM COMPLEX

2001 HENSON ROAD (A-E), MOUNT VERNON, WA

TABLE OF CONTENTS	2
THE OFFERING	3
LOCATION HIGHLIGHTS	4
BUILDING HIGHLIGHTS	5
PHOTO GALLERY	6
SITE MAP	7
DEMOGRAPHICS	8
TEAM MEMBERS	9

THE OFFERING

Windermere Commercial Real Estate is pleased to offer For Sale FIVE (5) Individual Industrial Condominiums located in South Mount Vernon for Sale or for Lease with an Option to Purchase.

This is a prime opportunity for a user or an investor.

The condominiums are similar in layout and consists of approx. 1,800 SF (approx. 1,250 ground and 566 mezzanine.)

Each condominium is comprised of space for industrial uses and/or storage, an ADA restroom on the ground floor, including a shower, and an office mezzanine on the second floor.

This site is zoned Commercial - Limited Industrial (C-L) allowing for numerous uses per the attached Municipal Code for the City of Mount Vernon.

FOR SALE:	\$399,950 PER UNIT
FOR LEASE W/ OPTION:	\$15/SF NNN (\$2,250 PER MONTH (NNN \$2.54/SF)

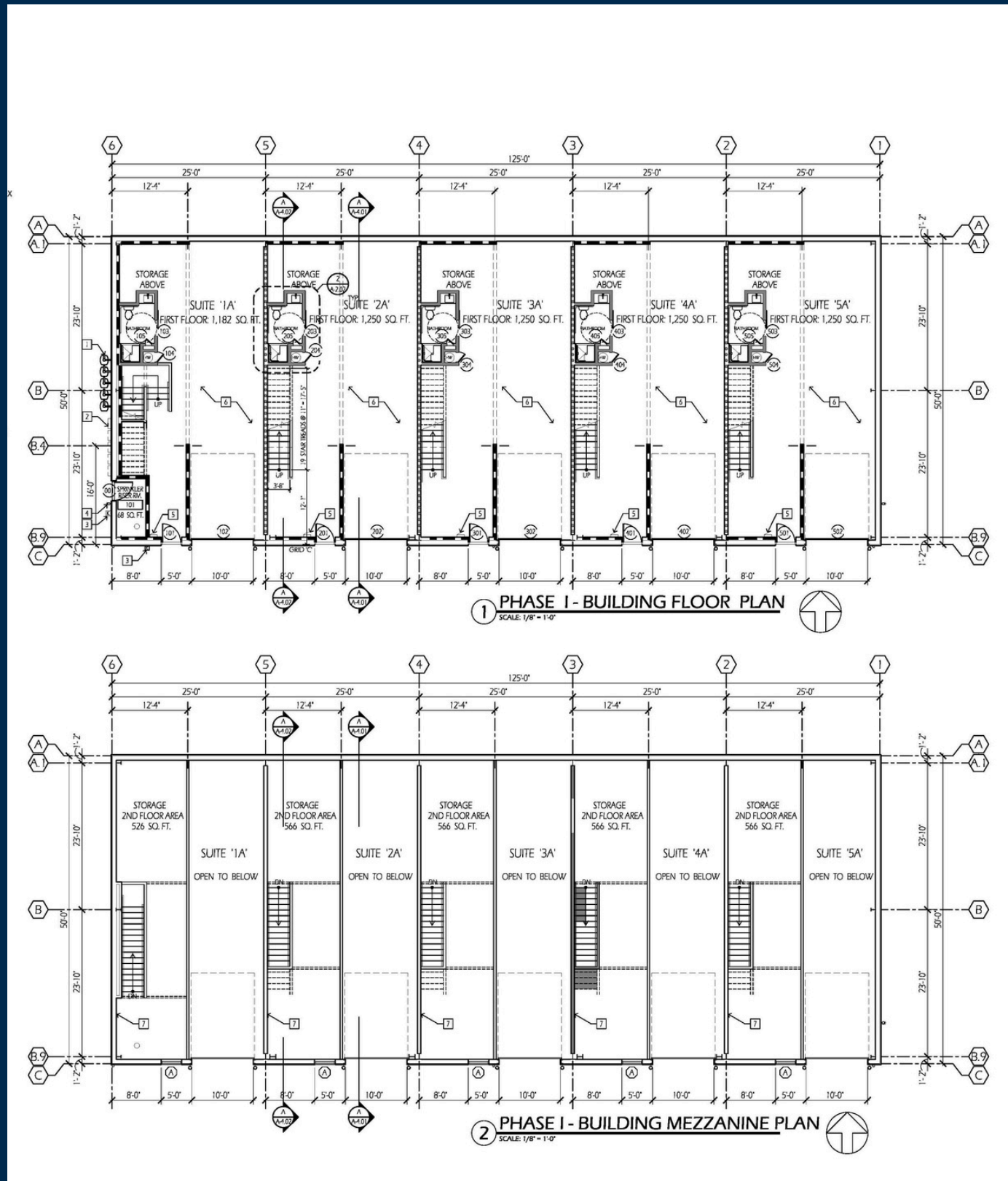
03

- 



COMMERCIAL LIMITED INDUSTRIAL (C-L)

BUILDING HIGHLIGHTS



- Each condominium is approximately 25 feet wide by 50 feet deep.
- Ground floor is accessible via 10 foot wide X 14 foot high overhead door and a man door.
- Mezzanine/lofts are approx. 560 SF
- Each condominium will have a complete restroom (ADA compliance) on the first floor with a shower.
- Each condominium includes individual heating.
- Each condominium is finished with wallboard (east wall of Unit E), paint and concrete flooring on the 1st floor.
- HOA includes water, sewer and garbage. Water has individual meter readers per unit.

FOR SALE

5 FIVE INDUSTRIAL COMMERCIAL CONDOMINIUMS



PROPERTY OVERVIEW

MOUNT VERNON AND SURROUNDING AREAS

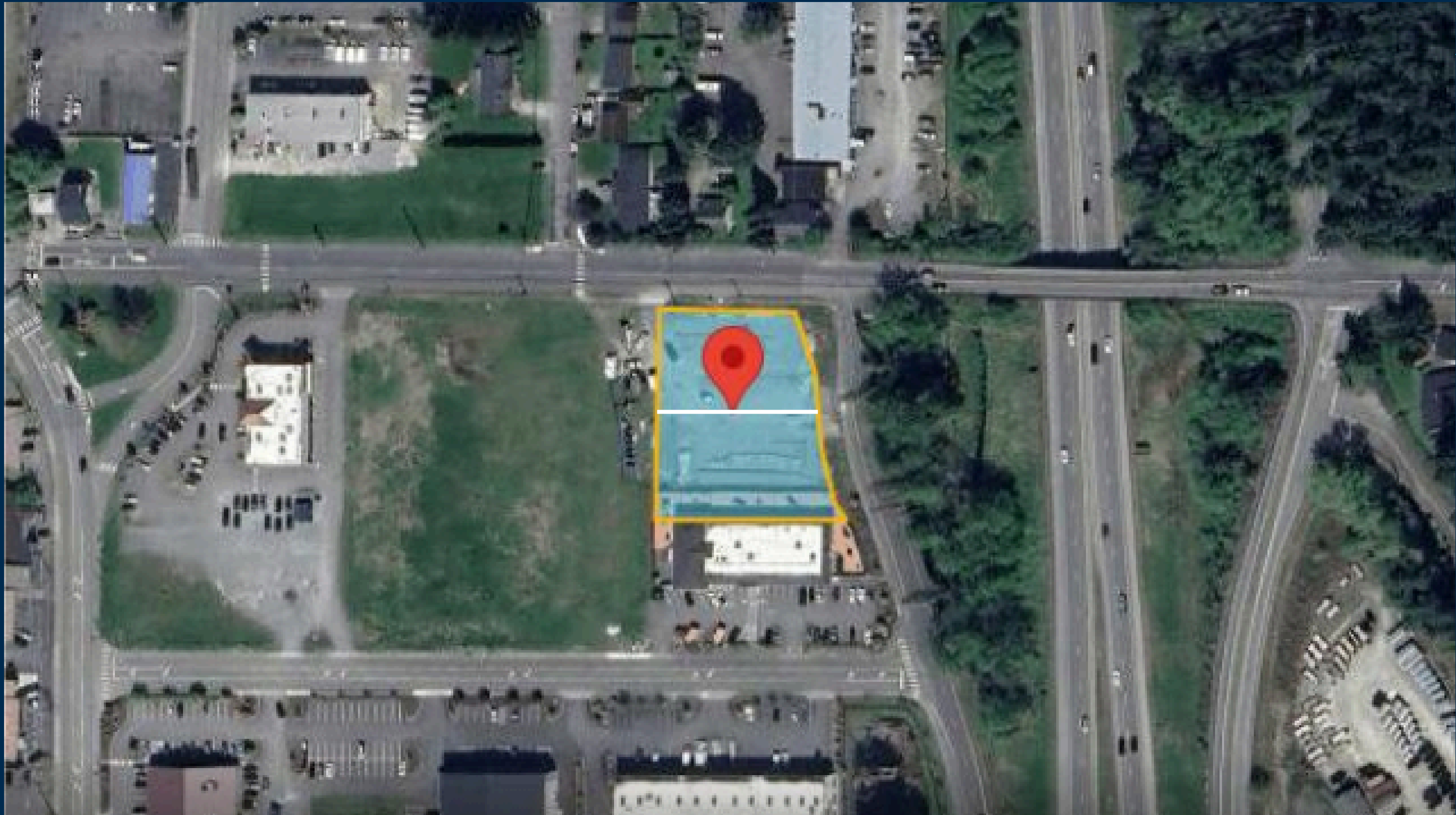
STRATEGICALLY LOCATED BETWEEN SEATTLE AND VANCOUVER, BC, MOUNT VERNON IS ONE OF THE FASTEST GROWING CITIES IN THE NORTHWEST AND THE LARGEST CITY IN SKAGIT COUNTY.

SUPPORTED WITH ACCESS TO DEEP-WATER SEAPORTS, INTERNATIONAL AIRPORTS, AND RAIL; WITHIN CLOSE PROXIMITY TO WORLD-LEADING RESEARCH INSTITUTIONS, ADVANCED MANUFACTURING, INFORMATION TECHNOLOGY CENTERS AND WORLD CLASS HEALTH CARE, SKAGIT COUNTY PROVIDES A SKILLED WORKFORCE, STRONG EDUCATION SYSTEM, AND ENVIABLE QUALITY OF LIFE STRETCHING FROM PUGET SOUND TO THE NORTH CASCADES.

ADD IN THE LOCAL INDUSTRY OF AGRICULTURE, TOURISM, QUAIN T SURROUNDING TOWNS, THE GATEWAY TO THE SAN JUAN ISLANDS AND THE HIKING, CLIMBING, SKIING AND SNOWBOARDING IN THE NORTH CASCADES ... ONE WILL FIND ENDLESS PLAY TO REWARD ONES HARD WORK.

FOR SALE: COMMERCIAL INDUSTRIAL CONDOMINIUMS

PHASE 1 AND PHASE 2 (APPROX. BOUNDARY LINE)



PROPERTY OVERVIEW

DEMOGRAPHICS



MOUNT VERNON AND BURLINGTON, WASHINGTON

TRAFFIC COUNTS

I-5 & George Hopper. 75,457 VPD

DEMOGRAPHICS

CENSUS 2023

Population	<u>46,158</u>
Total Households	16,828
Median HH Income	\$80,547
Median Home Value	\$436,054



Balisa Koetje

MANAGING BROKER

balisa@windermere.com | 360.421.4111



Jake Koetje

BROKER

jakekoetje@windermere.com | 360.466.8045



Windermere