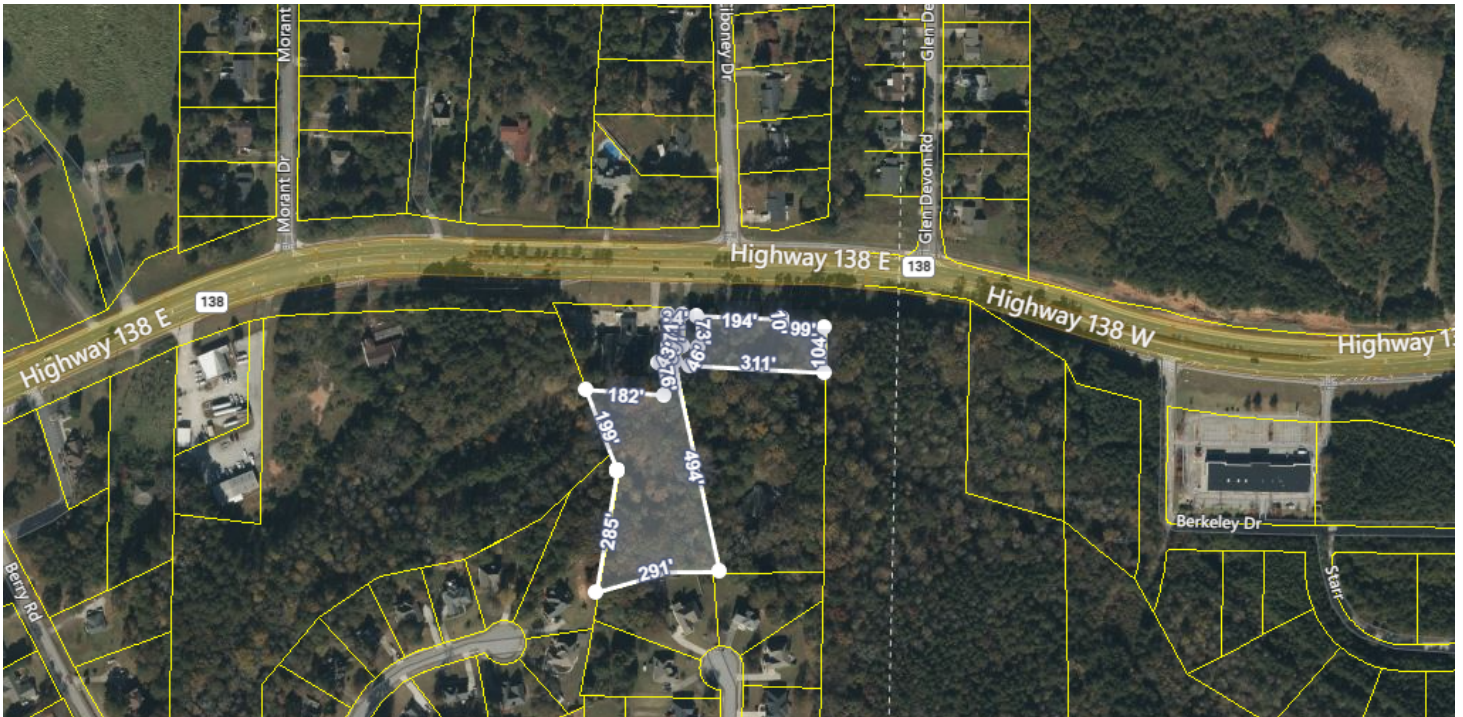


# SALE

## LAKE SPIVEY-COMMERCIAL LAND

Next to , 2952 Highway 138 E (Lake Spivey PKWY) Jonesboro , GA 30236



### PROPERTY DESCRIPTION

This commercial property is relatively flat with some slope. It comes with all utilities and sewer system right at the property. it has 293 feet of frontage on GA HWY-138. It is currently wooded. Additional 3.3 acres can be available.

### PROPERTY HIGHLIGHTS

- Right on GA HWY-138
- Near Shops, Hotels, Schools and Communities
- Great road access /only about 1.5 mile to exit 228 on I-75
- Has access to all utilities and sewer

### OFFERING SUMMARY

Sale Price:	\$374,000
Lot Size:	3.74 Acres
Zoning:	Oi-Office Institutional
APN:	12043B A015

DEMOGRAPHICS	1 MILE	2 MILES	3 MILES
Total Households	1,787	9,807	21,848
Total Population	4,872	25,374	58,456
Average HH Income	\$77,077	\$67,445	\$68,114

Adam Shekarabi  
770 632 1774



COLDWELL BANKER  
**COMMERCIAL**  
BULLARD

# SALE

## LAKE SPIVEY-COMMERCIAL LAND

Next to , 2952 Highway 138 E (Lake Spivey PKWY) Jonesboro , GA 30236

### SALE PRICE

**\$374,000**

### PROPERTY INFORMATION

Property Type	Land
Property Subtype	Office
Zoning	Oi-Office Institutional
Lot Size	3.74 Acres
APN #	12043B A015

### LOCATION INFORMATION

Building Name	Lake Spivey-Commercial Land
Street Address	Next to , 2952 Highway 138 E (Lake Spivey PKWY)
City, State, Zip	Jonesboro , GA 30236
County	Clayton
Market	Clayton County/ Jonesboro, Stockbridge
Sub-market	Jonesboro, Stockbridge
Cross-Streets	GA HWY-138

### PARKING & TRANSPORTATION

### UTILITIES & AMENITIES

### BUILDING INFORMATION

Building Size	0 SF
Occupancy %	0%
Number of Lots	1



**Adam Shekarabi**  
770 632 1774



**COLDWELL BANKER**  
**COMMERCIAL**  
BULLARD

# SALE

## LAKE SPIVEY-COMMERCIAL LAND

Next to , 2952 Highway 138 E (Lake Spivey PKWY) Jonesboro , GA 30236



**Adam Shekarabi**  
770 632 1774

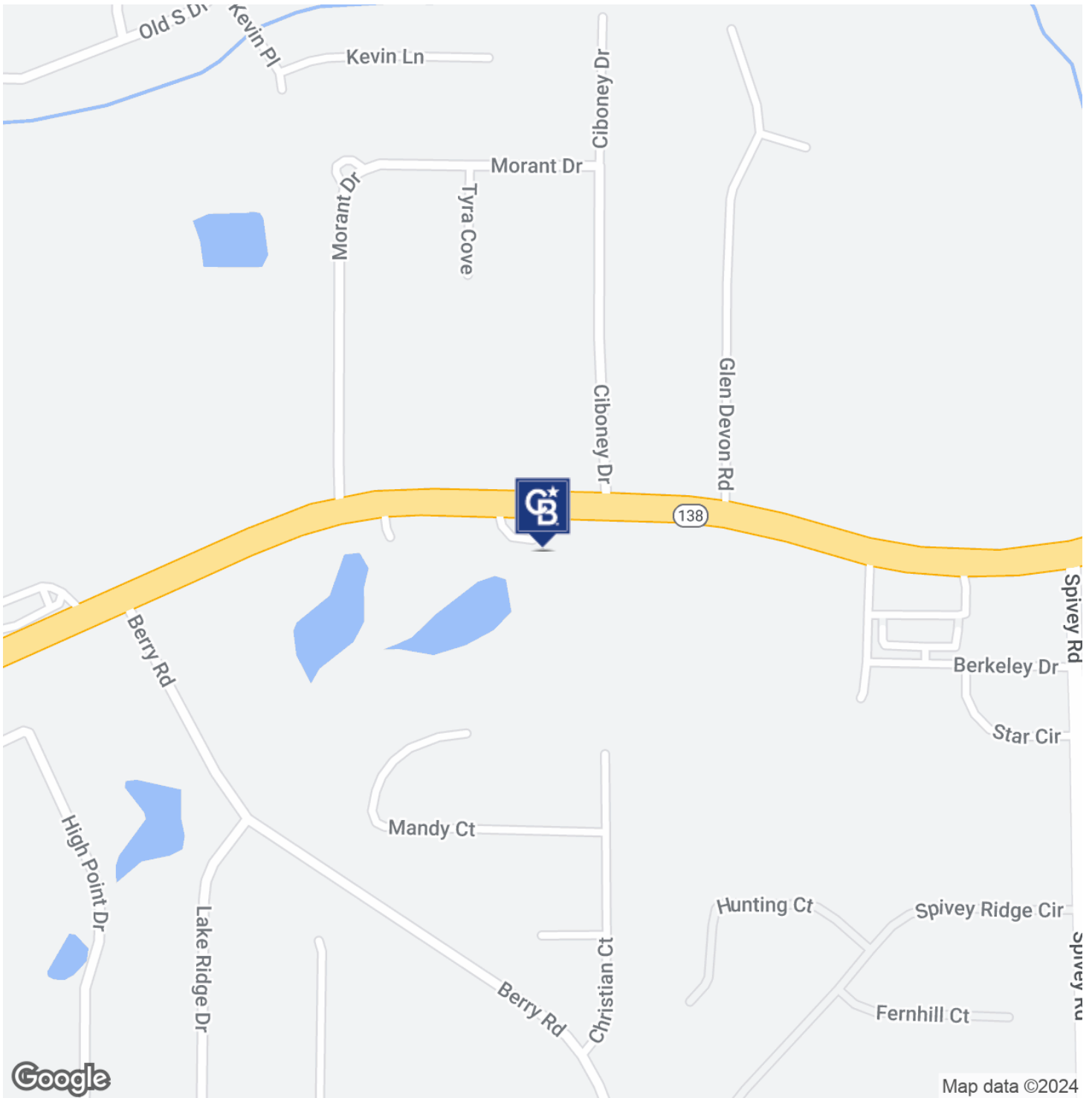


**COLDWELL BANKER**  
**COMMERCIAL**  
BULLARD

# SALE

## LAKE SPIVEY-COMMERCIAL LAND

Next to , 2952 Highway 138 E (Lake Spivey PKWY) Jonesboro , GA 30236



**Adam Shekarabi**  
770 632 1774

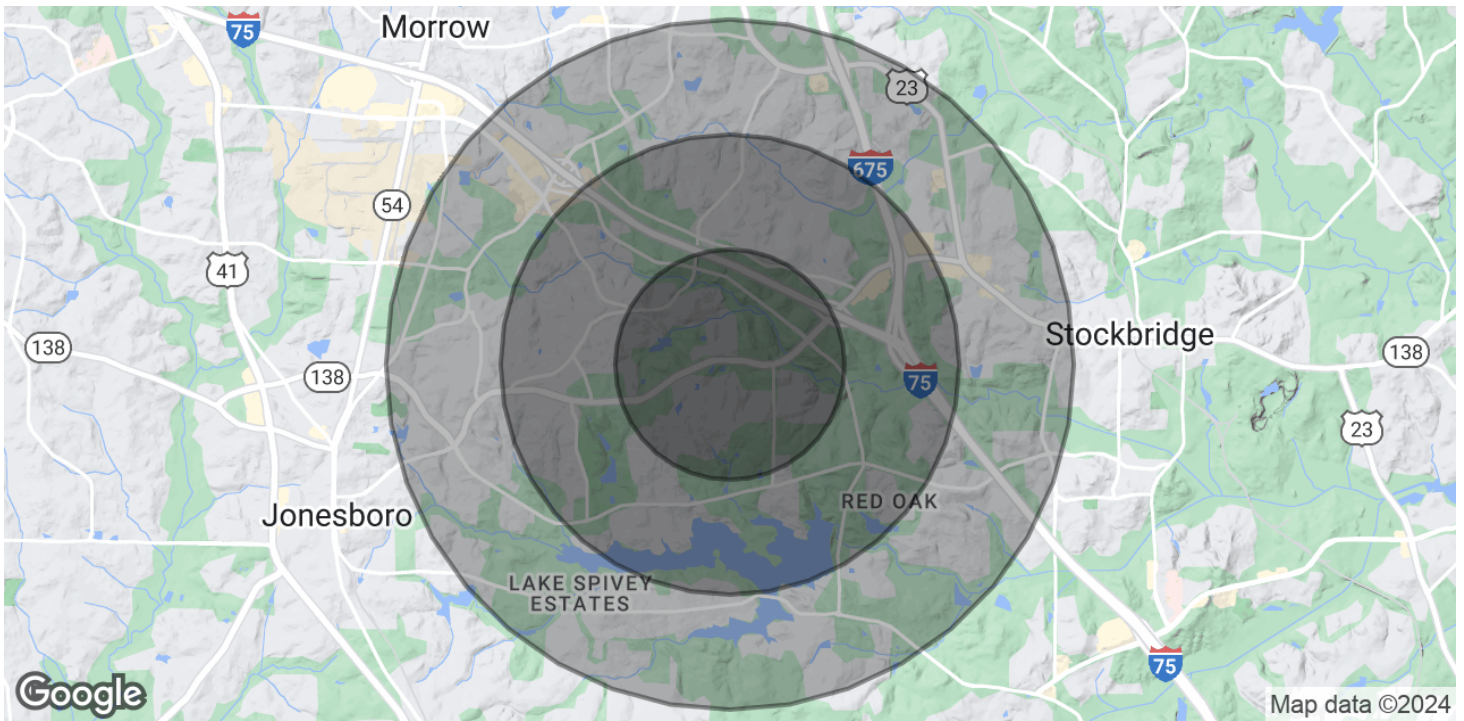


**COLDWELL BANKER**  
**COMMERCIAL**  
BULLARD

# SALE

## LAKE SPIVEY-COMMERCIAL LAND

Next to , 2952 Highway 138 E (Lake Spivey PKWY) Jonesboro , GA 30236



<b>POPULATION</b>	<b>1 MILE</b>	<b>2 MILES</b>	<b>3 MILES</b>
Total Population	4,872	25,374	58,456
Average Age	38.9	35.8	35.4
Average Age (Male)	36.8	32.8	32.6
Average Age (Female)	42.7	37.5	36.8

<b>HOUSEHOLDS &amp; INCOME</b>	<b>1 MILE</b>	<b>2 MILES</b>	<b>3 MILES</b>
Total Households	1,787	9,807	21,848
# of Persons per HH	2.7	2.6	2.7
Average HH Income	\$77,077	\$67,445	\$68,114
Average House Value	\$167,899	\$132,269	\$131,296

\* Demographic data derived from 2020 ACS - US Census

**Adam Shekarabi**  
770 632 1774



**COLDWELL BANKER**  
**COMMERCIAL**  
BULLARD