

**Specifications**

±0.15 AC  
Block 18206, Lot 11  
LOT SIZE

Auto Dealership  
CURRENT USE

±550 SF Office Trailer On-Site  
Fenced-In Yard with Lighting  
COMMENTS

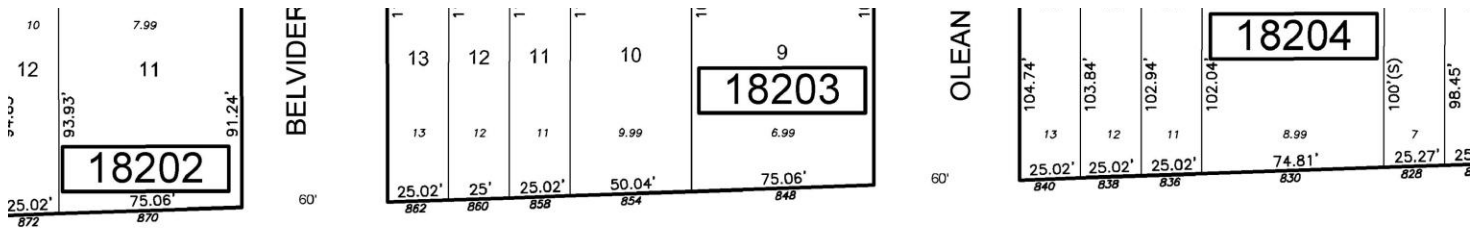
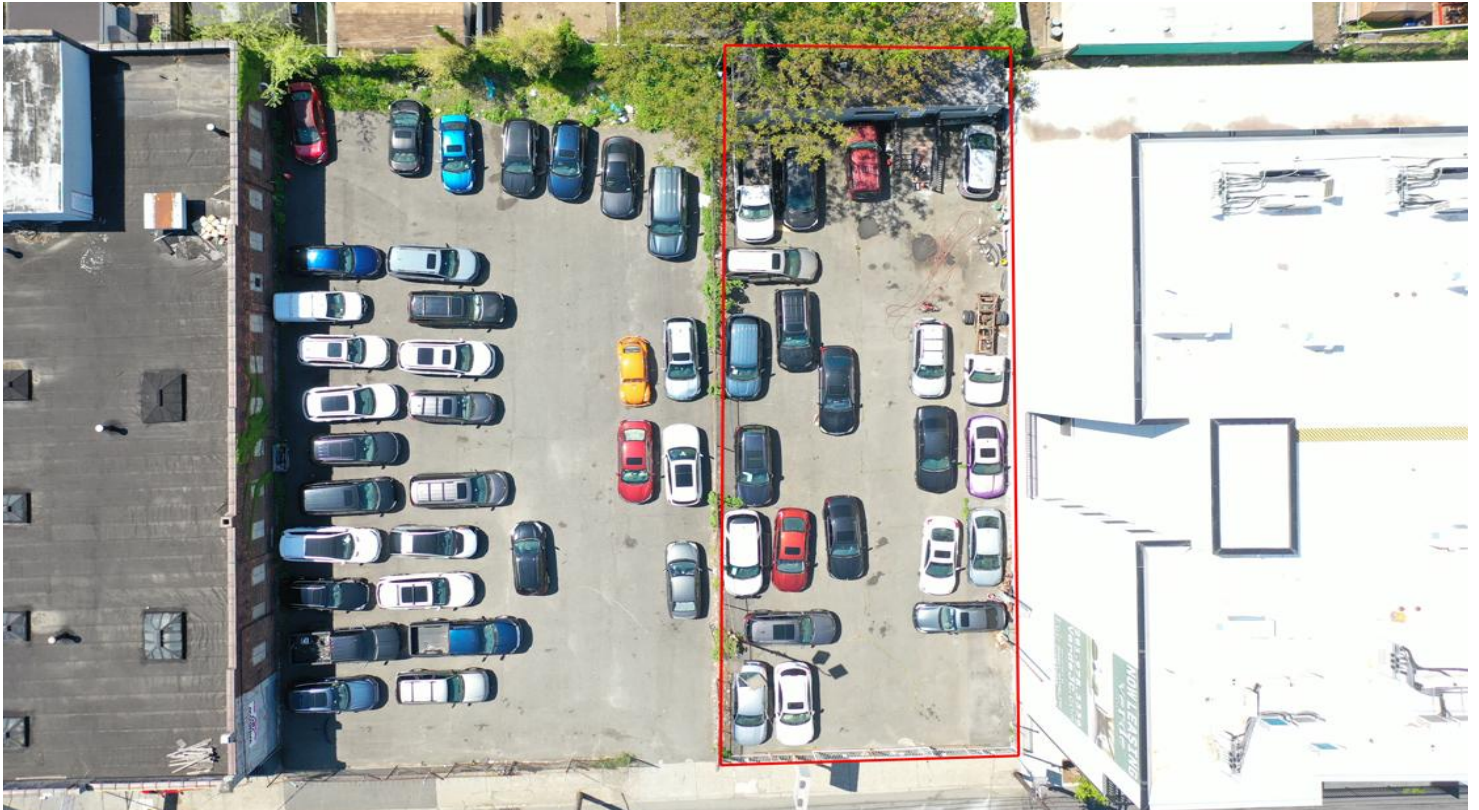
\$45,495.14  
TAXES (2025)

1.8 Miles to Journal Square  
2.4 Miles to I-95 Exit 15E  
2.5 Miles to US Highway 1 & 9  
ACCESSIBILITY

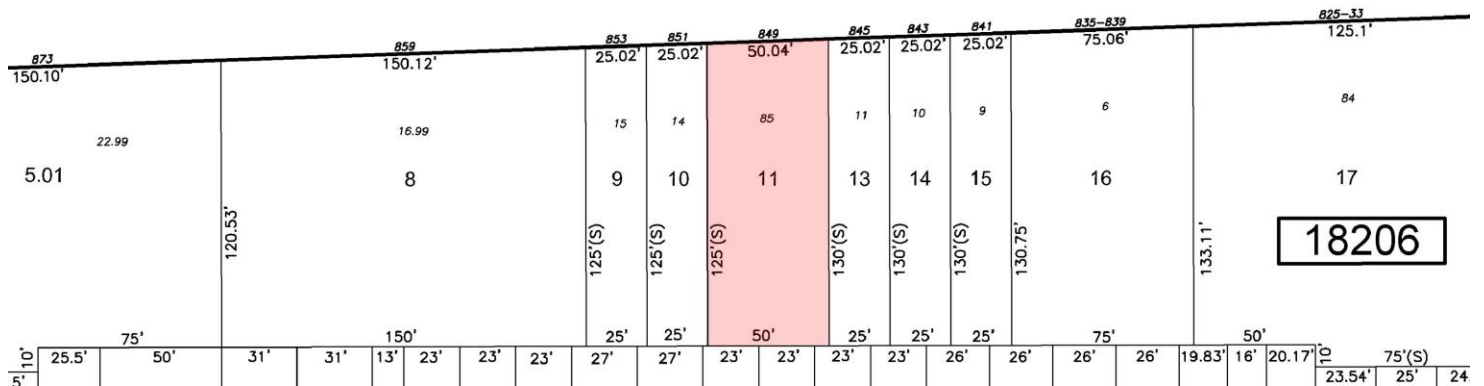
For additional property information or to arrange an inspection, please contact the exclusive brokers:

**Troy Schaafsma, SIOR**  
Executive Director  
973.379.6644 x 116  
TroyS@blauberg.com

**Jack Schlenger**  
Associate  
973.379.6644 x 239  
Jack@blauberg.com



COMMUNIPAW AVENUE



For additional property information or to arrange an inspection, please contact the exclusive brokers:

**Troy Schaafsma, SIOR**  
 Executive Director  
 973.379.6644 x 116  
 TroyS@blauberg.com

**Jack Schlenger**  
 Associate  
 973.379.6644 x 239  
 Jack@blauberg.com

The information contained herein has been obtained from sources considered to be reliable, but no guarantee of its accuracy is made by this company. In addition, no representation is made respecting zoning, condition of title, dimensions, or any matters of a legal or environmental nature. Such matters should be referred to legal counsel for determination. Terms and conditions are subject to change without prior notice. Subject to errors and omissions.



### 5 MILES

- Total Population: 980,365
- Households: 434,206
- Median Household Income: \$127,709
- Average Household Size: 2.2
- Transportation to Work: 564,347
- Labor Force: 830,714

### 10 MILES

- Total Population: 6.02M
- Households: 2.5M
- Median Household Income: \$110,463
- Average Household Size: 2.3
- Transportation to Work: 3.26M
- Labor Force: 5M

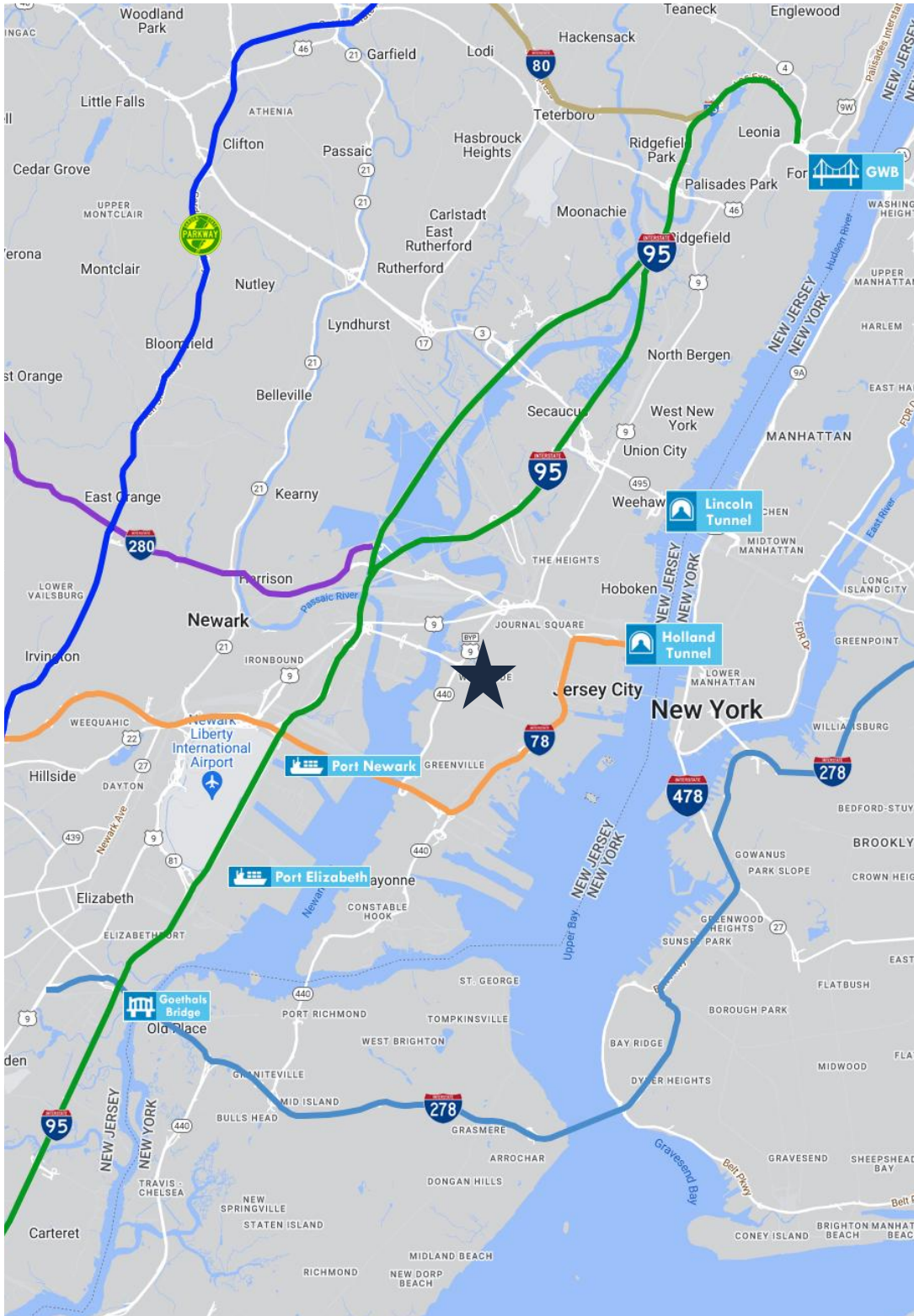
### 15 MILES

- Total Population: 10.48M
- Households: 4.12M
- Median Household Income: \$100,625
- Average Household Size: 2.5
- Transportation to Work: 5.42M
- Labor Force: 8.62M

For additional property information or to arrange an inspection, please contact the exclusive brokers:

**Troy Schaafsma, SIOR**  
Executive Director  
973.379.6644 x 116  
TroyS@blauberg.com

**Jack Schlenger**  
Associate  
973.379.6644 x 239  
Jack@blauberg.com



**ACCESSIBILITY**

- JOURNAL  
SQUARE
1.8 Miles  
Journal Square
- 95
2.4 MI  
I-95 Exit 15E
- 1&9
2.5 MI  
US Hwy 1 & 9
- 3.6 MI  
Holland Tunnel
- 78
5.1 MI  
I-78
- 7.6 MI  
Lincoln Tunnel
- 8.1 MI  
Ports Newark  
& Elizabeth
- 8.3 MI  
Newark Airport

For additional property information or to arrange an inspection, please contact the exclusive brokers:

**Troy Schaafsma, SIOR**  
*Executive Director*  
 973.379.6644 x 116  
 TroyS@blauberg.com

**Jack Schlenger**  
*Associate*  
 973.379.6644 x 239  
 Jack@blauberg.com

The information contained herein has been obtained from sources considered to be reliable, but no guarantee of its accuracy is made by this company. In addition, no representation is made respecting zoning, condition of title, dimensions, or any matters of a legal or environmental nature. Such matters should be referred to legal counsel for determination. Terms and conditions are subject to change without prior notice. Subject to errors and omissions.