

For Lease

Flex / Industrial

**Space Available
19,879 SF (Divisible to 10,643 SF)**

Dry Creek Centre
9800 - 10000 E Geddes Avenue
Centennial, CO 80112

Property highlights

- White-Box Completed!
- Very desirable location with direct access to I-25 at Dry Creek Road interchange
- Immediate proximity to hotels, restaurants and other services
- Strong ownership with recent upgrades including new paint, parking lot resurfacing and landscape upgrades
- Flex/Industrial uses up to 70% warehouse available
- 100% Sprinklered

David Lee
Senior Managing Director
+1 720 217 7223
david.lee1@jll.com

Jason Addlesperger
Senior Managing Director
+1 720 217 3403
jason.addlesperger@jll.com

Philip Lee
Vice President
+1 303 257 5915
philip.lee1@jll.com

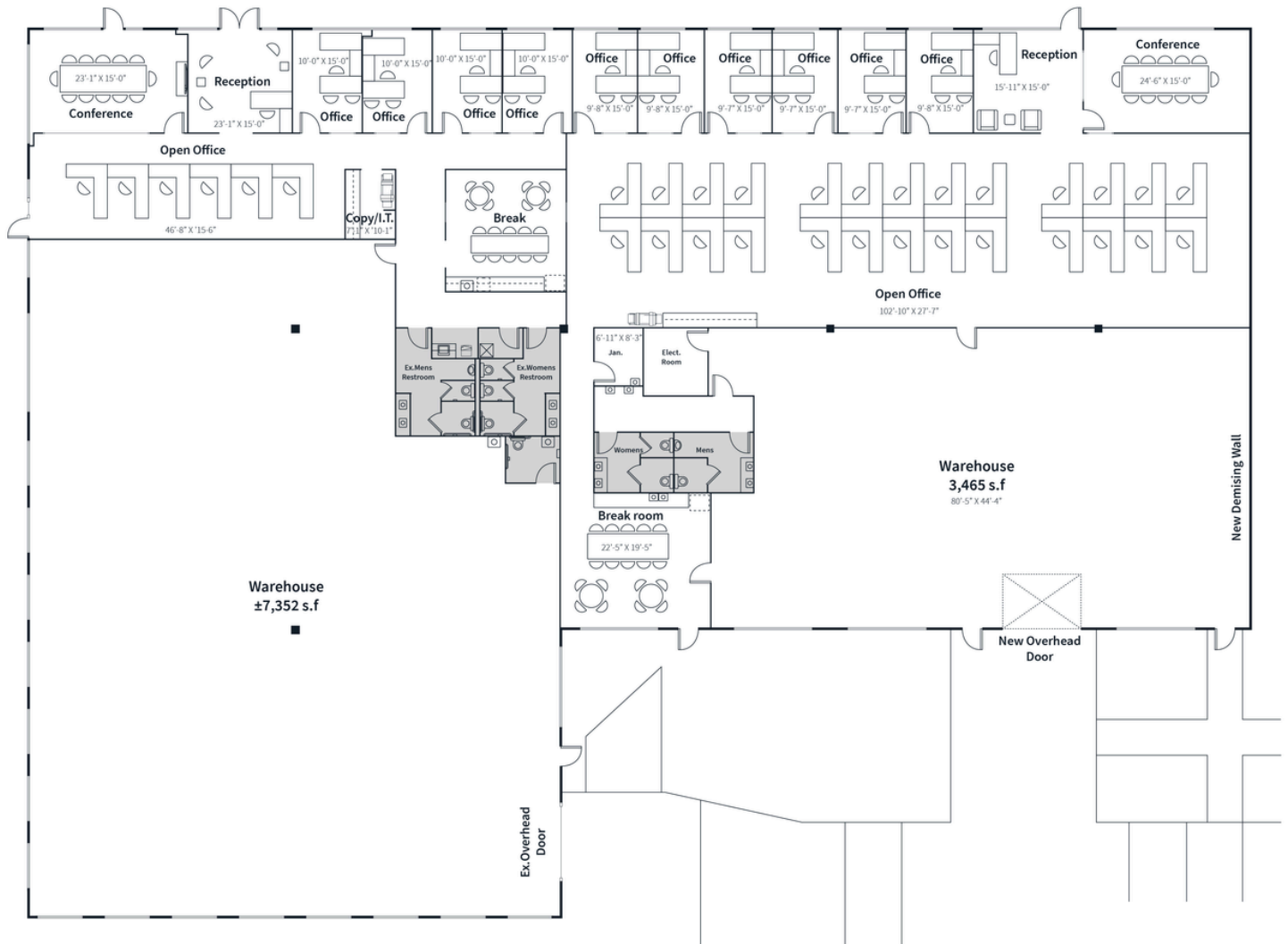
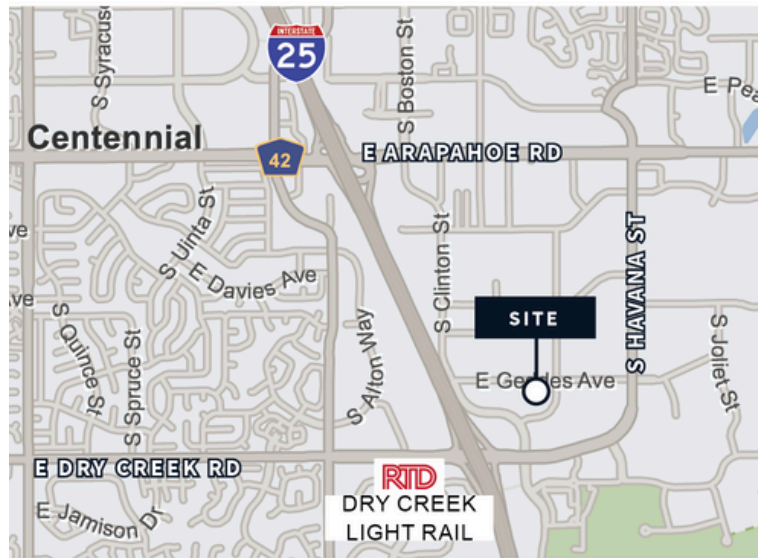
jll.com

Jones Lang LaSalle Brokerage, Inc.



Space details

- Available Space: 19,879 SF (Divisible to 10,643 SF)
- Warehouse: ±55%
- Office: ±45%
- Lease Rate: Per Quote
- Operating Expenses: \$8.18/SF (2025)
- Clear Height: 16'
- Parking: 5.0:1,000 SF
- Loading: (1) 12' x 14' DI door
- 100% HVAC Throughout



Although information has been obtained from sources deemed reliable, neither Owner nor JLL makes any guarantees, warranties or representations, express or implied, as to the completeness or accuracy as to the information contained herein. Any projections, opinions, assumptions or estimates used are for example only. There may be differences between projected and actual results, and those differences may be material. The Property may be withdrawn without notice. Neither Owner nor JLL accepts any liability for any loss or damage suffered by any party resulting from reliance on this information. If the recipient of this information has signed a confidentiality agreement regarding this matter, this information is subject to the terms of that agreement. ©2025 Jones Lang LaSalle IP, Inc. All rights reserved.



Dry Creek Centre

9800 - 10000 E Geddes Avenue

Location



Access

