



# 700

EAST EL CAMINO REAL | MOUNTAIN VIEW, CA

**RENOVATED INTERIORS, COMMON AREAS AND OUTDOOR AREA**

[700-e-el-camino.cbre-properties.com](http://700-e-el-camino.cbre-properties.com)

**CBRE**

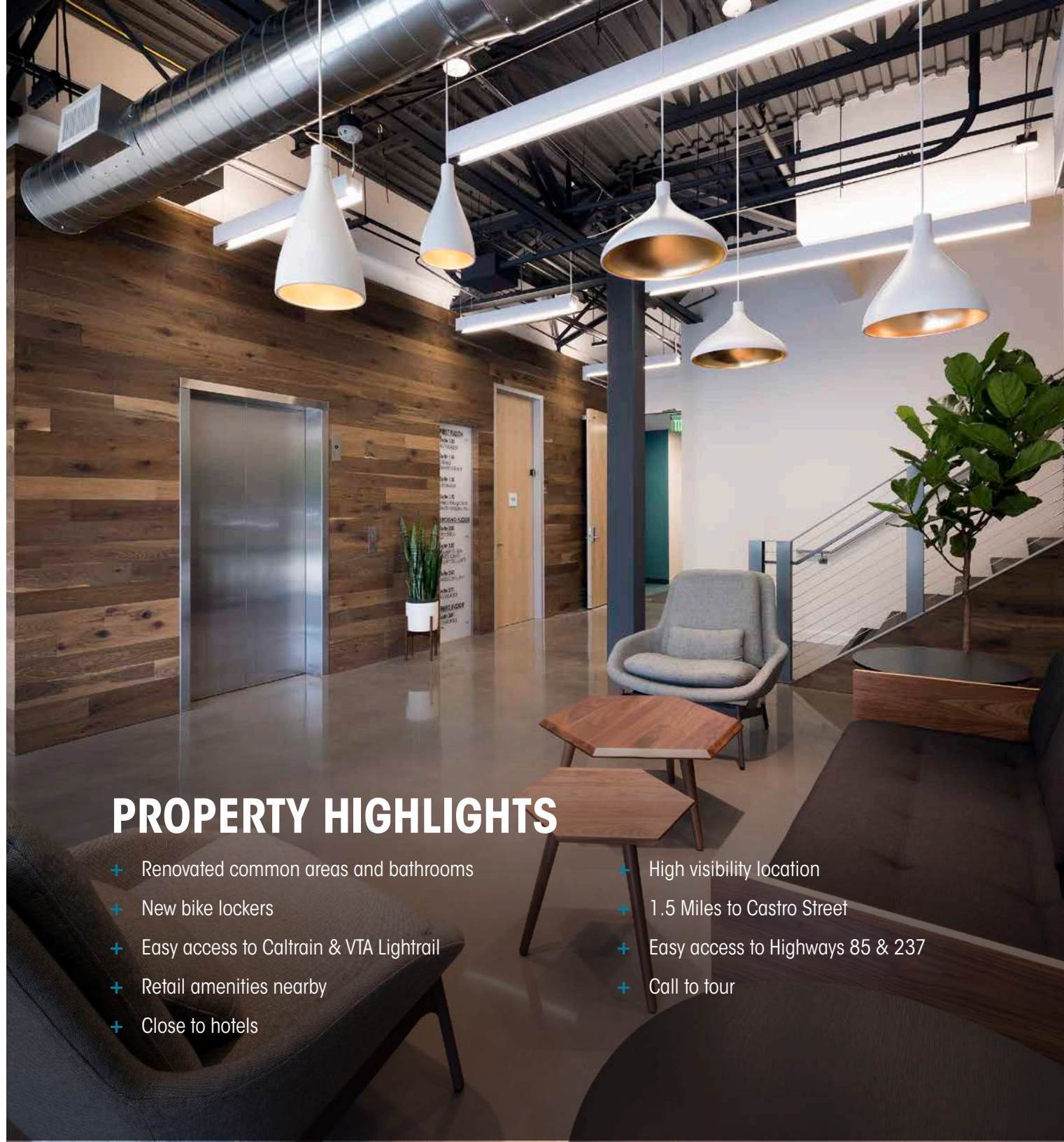


# 700

EAST EL CAMINO REAL  
MOUNTAIN VIEW, CA

## AVAILABILITIES

SUITE	SQUARE FOOTAGE	AVAILABLE
170	±3,091	NOW
250	±8,526 (Divisible)	NOW
3rd Floor	±17,521	NOW



## PROPERTY HIGHLIGHTS

- + Renovated common areas and bathrooms
- + New bike lockers
- + Easy access to Caltrain & VTA Lightrail
- + Retail amenities nearby
- + Close to hotels
- + High visibility location
- + 1.5 Miles to Castro Street
- + Easy access to Highways 85 & 237
- + Call to tour





Elevator Lobby



Outdoor Lounge

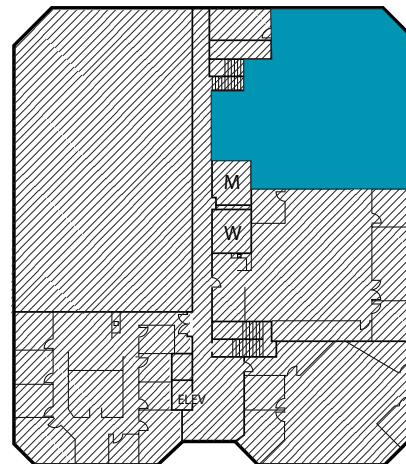
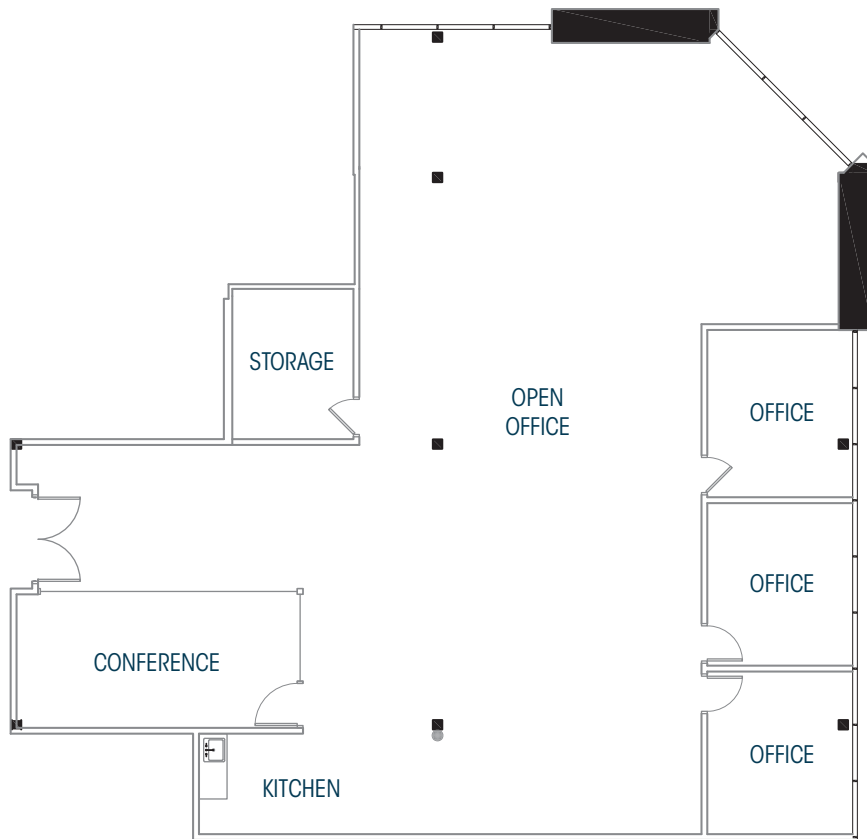


Renovated Lobby



Living Wall

# SUITE 170 • FIRST FLOOR • ±3,091 SQ. FT.



Not to scale

# 700

EAST EL CAMINO REAL  
MOUNTAIN VIEW, CA

## HIGHLIGHTS

3 Offices

1 Conference Room

Open Kitchen Area

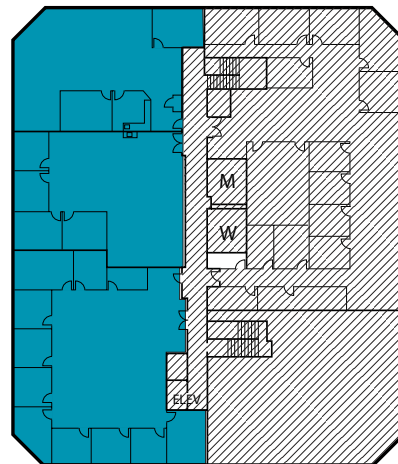
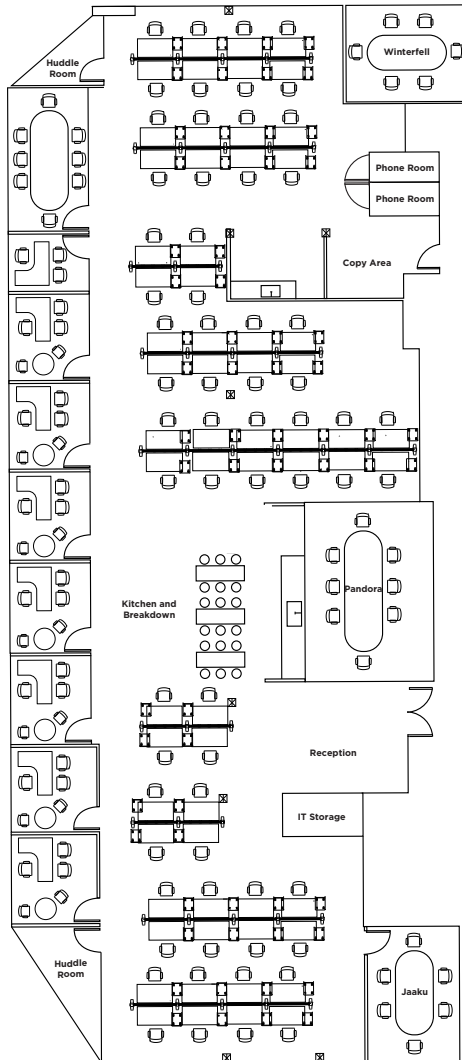
Storage Room





**PHOTO GALLERY - SUITE 170**

**SUITE 250 • SECOND FLOOR • ±8,526 SQ. FT.**  
(Divisible)



Not to scale

# 700

**EAST EL CAMINO REAL  
MOUNTAIN VIEW, CA**

## HIGHLIGHTS

Divisible

8 Private Offices

4 Conference Rooms

2 Huddle Rooms

2 Phone Rooms

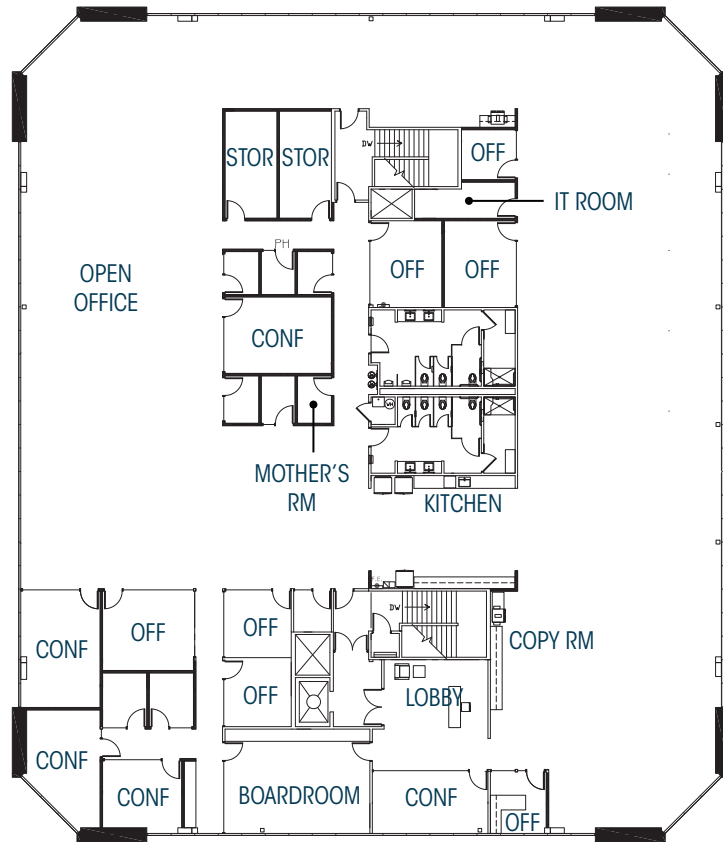
IT/Storage Room

Copy Area

Large Central Kitchen/Break Room

Separate Coffee Bar/Kitchenette

# 3RD FLOOR • ±17,521 SQ. FT.



Not to scale

# 700

EAST EL CAMINO REAL  
MOUNTAIN VIEW, CA

## HIGHLIGHTS

7 Offices

1 Boardroom

5 Conference Rooms

2 Storage Rooms

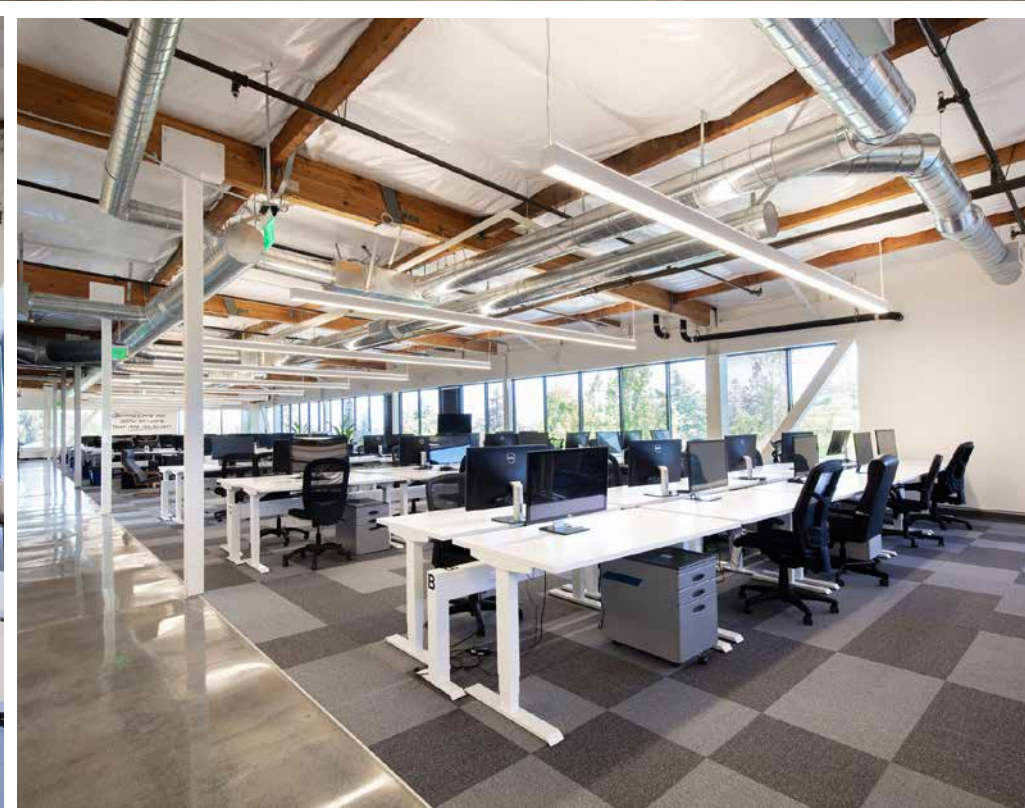
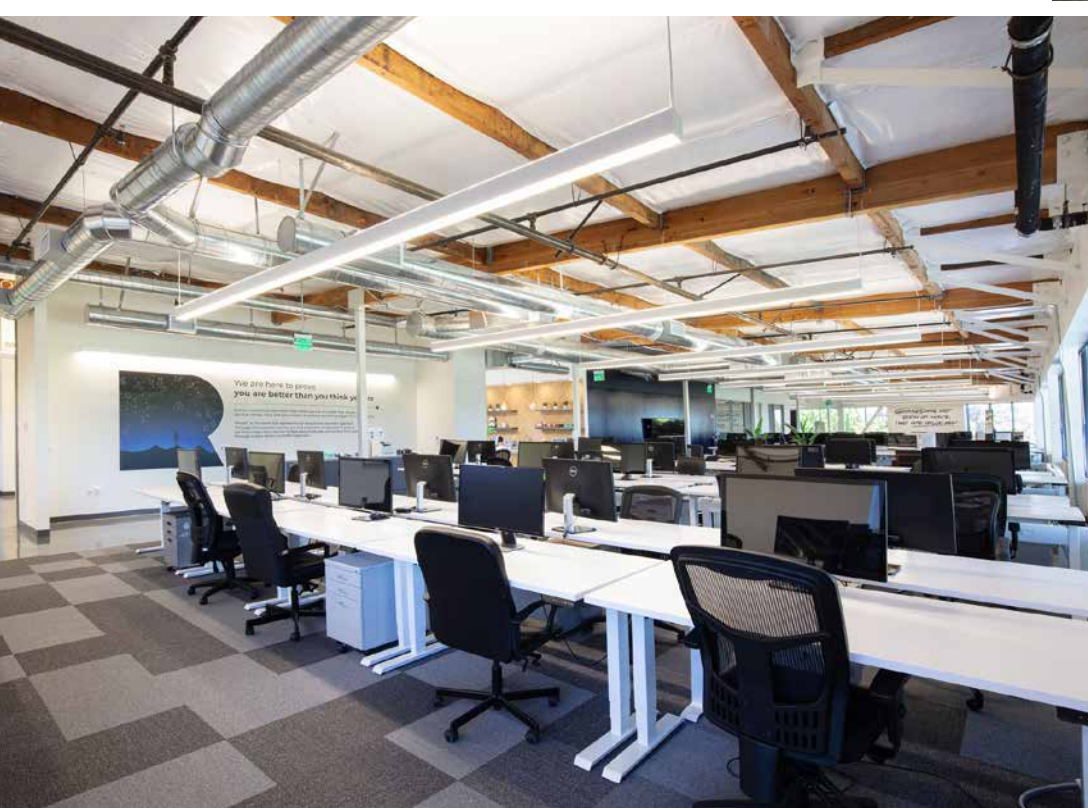
Open Kitchen Area

IT Room

Mother's Room

Copy Room

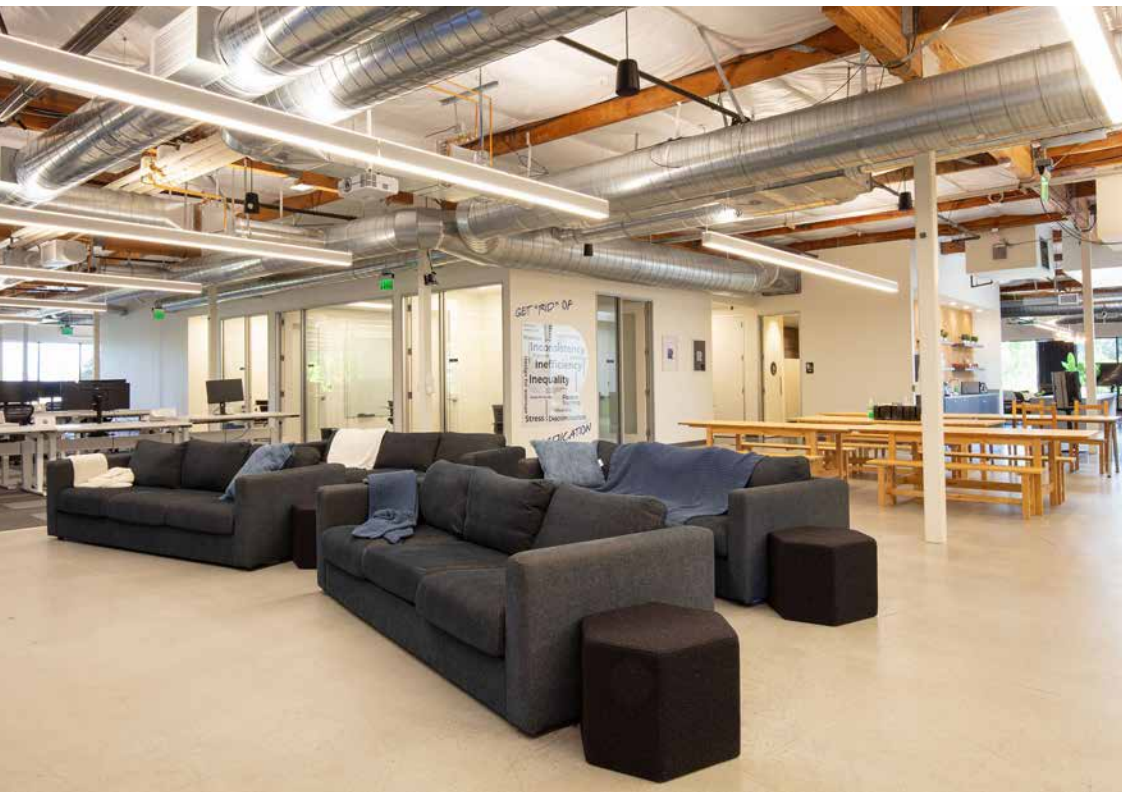




# PHOTO GALLERY - 3RD FLOOR

**CBRE**





## PHOTO GALLERY - 3RD FLOOR

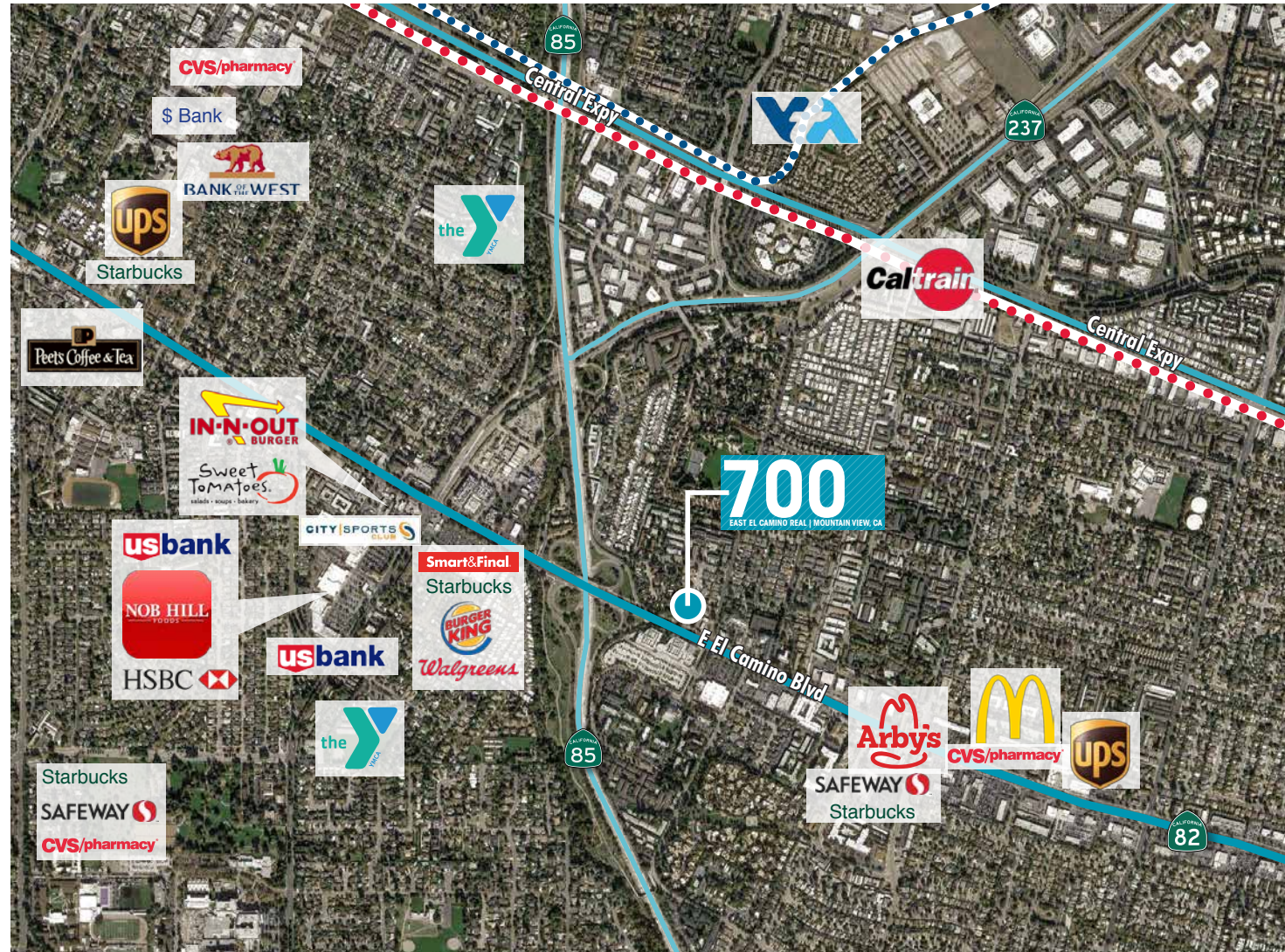
**CBRE**



# 700

EAST EL CAMINO REAL  
MOUNTAIN VIEW, CA

RETAIL  
AMENITIES  
NEARBY





# 700

EAST EL CAMINO REAL  
MOUNTAIN VIEW, CA

## TRANSPORTATION MAP



4 MIN/1.8 MILES



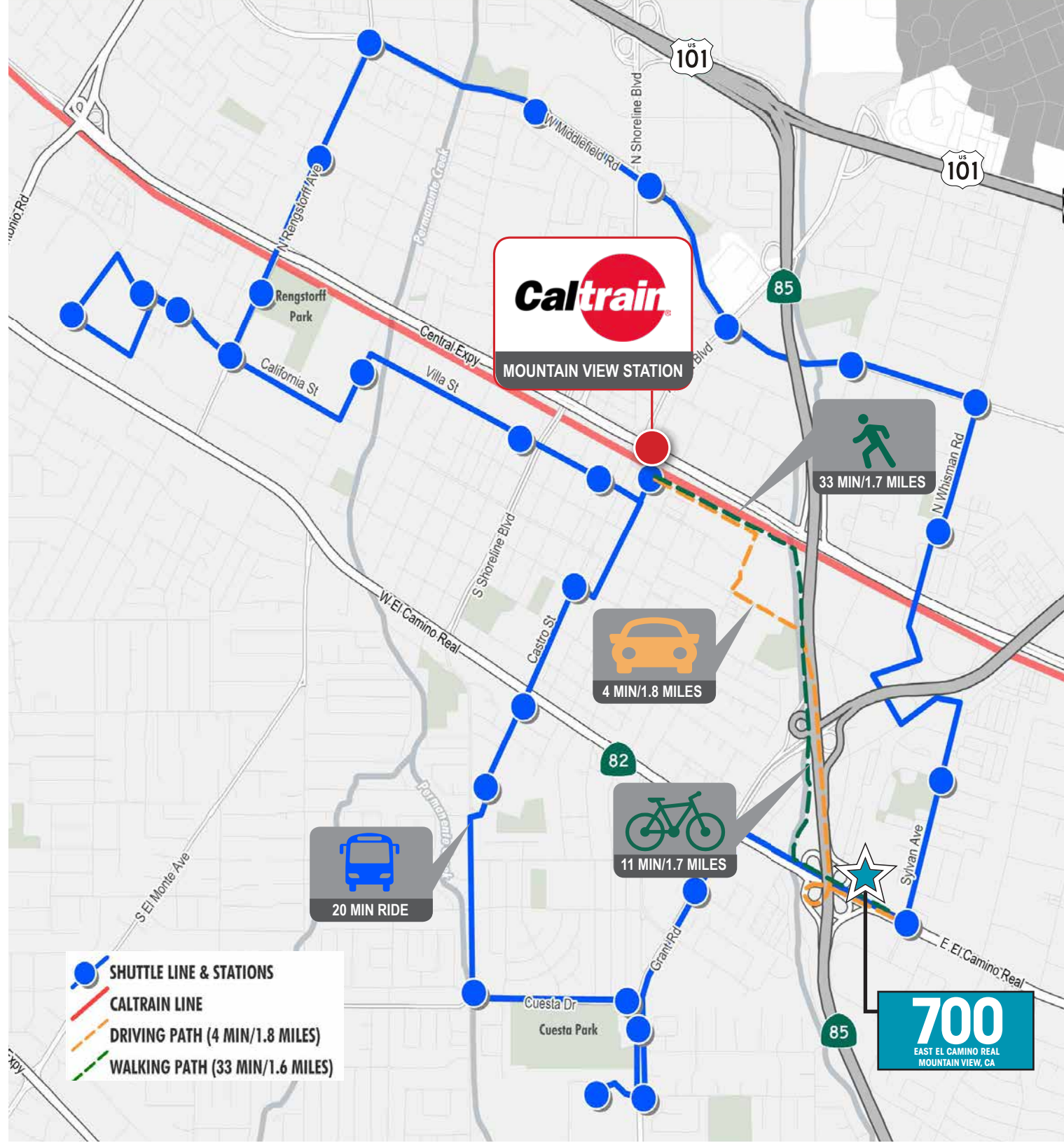
11 MIN/1.7 MILES



33 MIN/1.7 MILES



20 MIN FROM  
PROPERTY TO  
CALTRAIN







# 700

**EAST EL CAMINO REAL | MOUNTAIN VIEW, CA**

**MARK CHRISTIERSON**  
Executive Vice President  
Lic. 01296954  
+1 408 453 7452  
[mark.christierson@cbre.com](mailto:mark.christierson@cbre.com)

**PATRICK REILLY**  
First Vice President  
Lic. 01504114  
+1 650 577 2931  
[patrickreilly@cbre.com](mailto:patrickreilly@cbre.com)

**SAMANTHA GOETZ**  
Senior Associate  
Lic. 02103756  
+1 408 467 7587  
[samantha.goetz@cbre.com](mailto:samantha.goetz@cbre.com)

© 2024 CBRE, Inc. All rights reserved. This information has been obtained from sources believed reliable but has not been verified for accuracy or completeness. CBRE, Inc. makes no guarantee, representation or warranty and accepts no responsibility or liability as to the accuracy, completeness, or reliability of the information contained herein. You should conduct a careful, independent investigation of the property and verify all information. Any reliance on this information is solely at your own risk. CBRE and the CBRE logo are service marks of CBRE, Inc. All other marks displayed on this document are the property of their respective owners, and the use of such marks does not imply any affiliation with or endorsement of CBRE. Photos herein are the property of their respective owners. Use of these images without the express written consent of the owner is prohibited.

**CBRE**