

# Earhart Corporate Center

2211 Old Earhart Rd | Ann Arbor, MI

Suite 250: 10,000 SF - 33,309 SF Available



## Property Highlights

- + Adjacent to North Campus and M City (University of Michigan vehicle testing center)
- + Proximity to US-23 entrance/exit ramps
- + Quality finishes used for build-out
- + Ability to include FF&E
- + Rapidly growing employment base of Google, Toyota, U of M, UMHS, KLA Tencor within Plymouth Road corridor
- + Sublease term through 6/30/2029

# Earhart Corporate Center

2211 Old Earhart Rd | Ann Arbor, MI

For Sublease

## Property Information

10,000-33,309

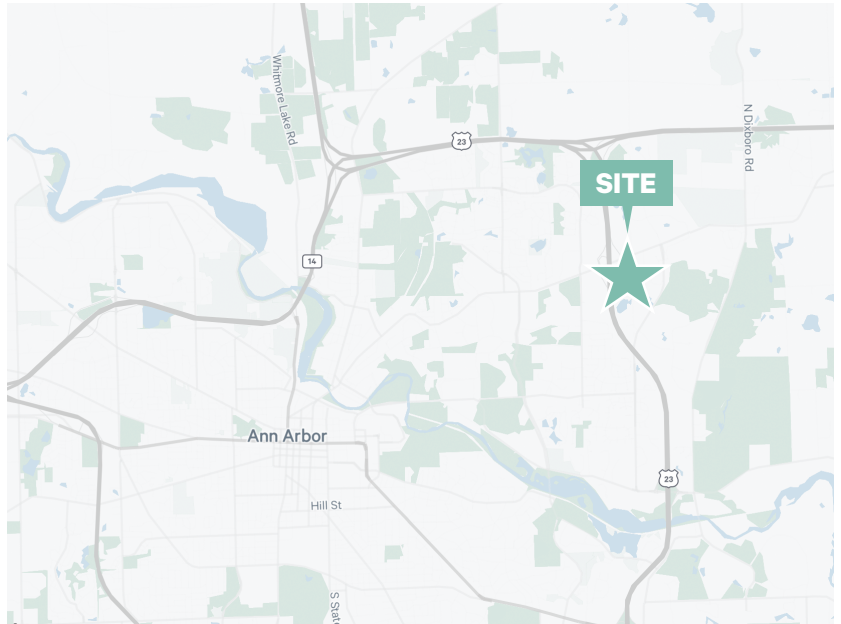
Available Square Footage

203,000

Building Square Footage

Negotiable

Sublease Rate



### DEMOGRAPHICS WITHIN A 5 MILE RADIUS

POPULATION 141,303

BUSINESSES 5,396

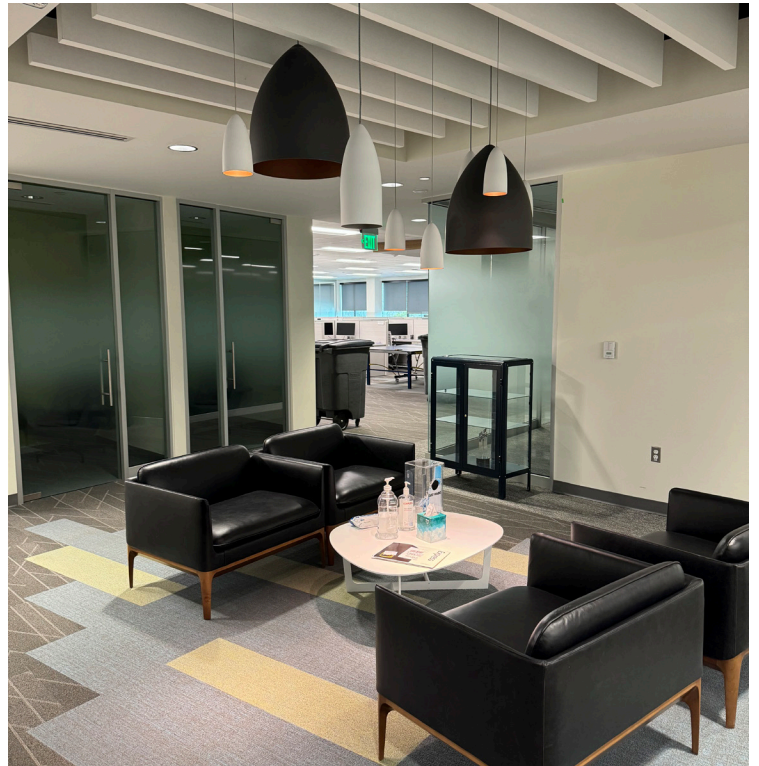
EMPLOYEES 148,495

HOUSEHOLDS 56,250

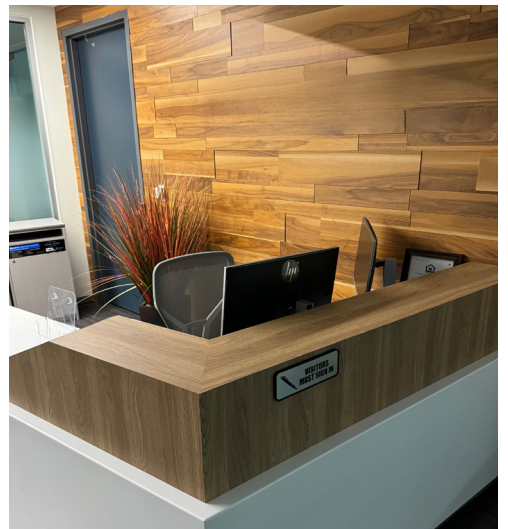
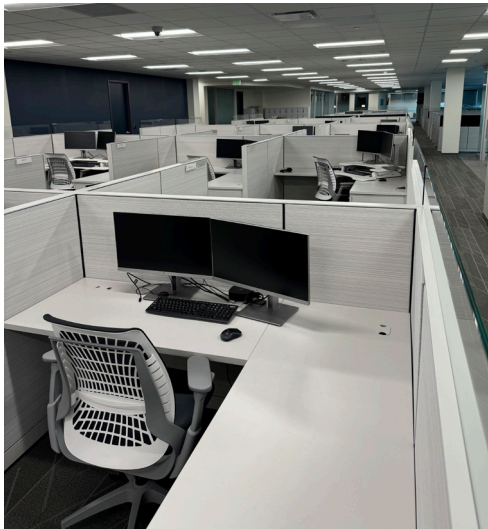
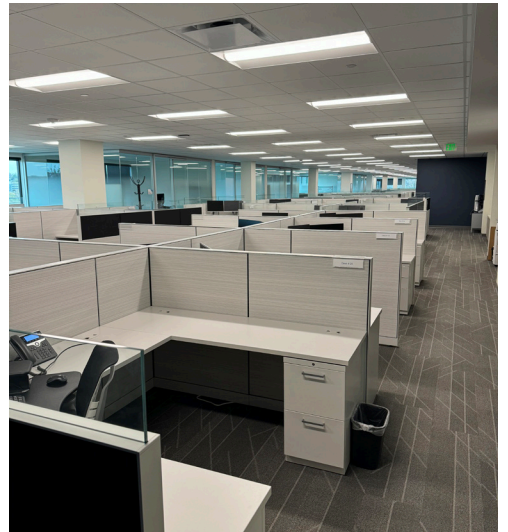
AVERAGE HH INCOME \$117,833

PER CAPITA INCOME \$50,445

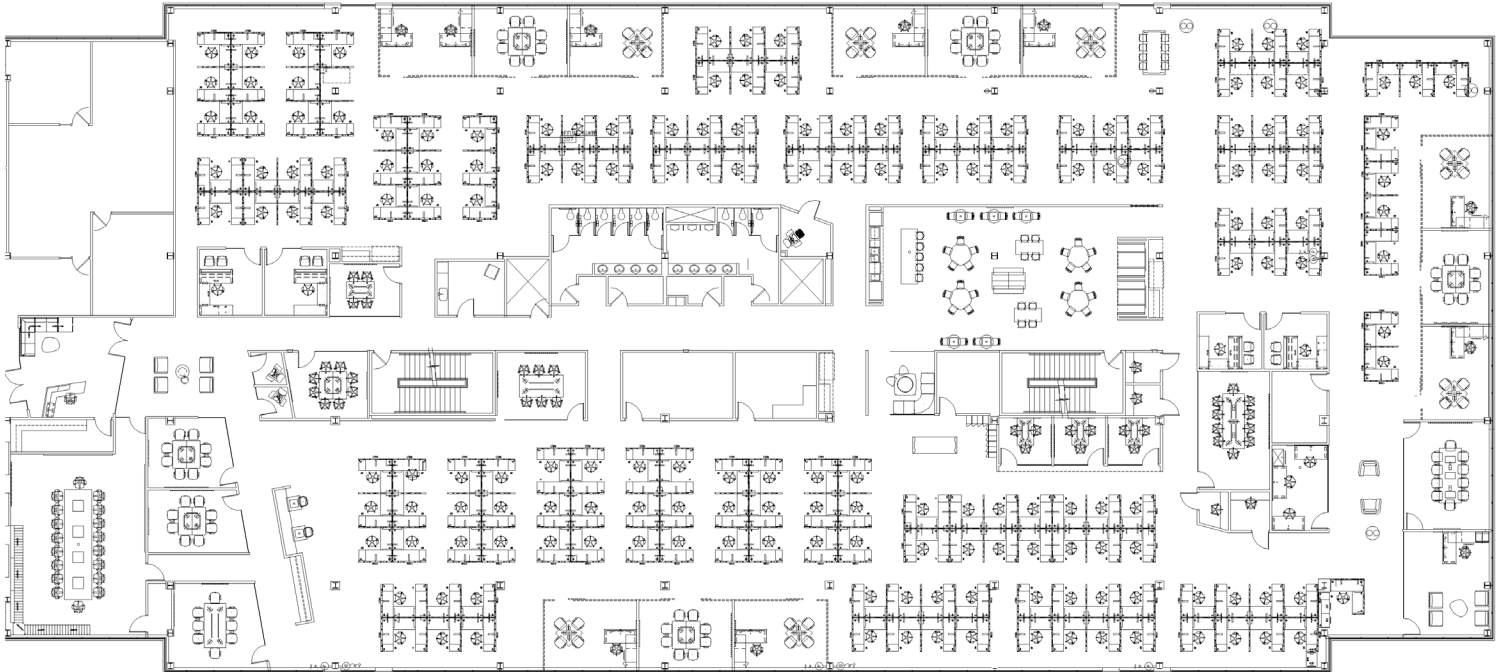
# Building Photos



# Suite 250 Photos



# Floor Plan | Suite 250 | 10,000 SF - 33,309 SF



## Contact Us

**Tim Guest**

Vice President

+1 248 408 7838

tim.guest@cbre.com

© 2024 CBRE, Inc. All rights reserved. This information has been obtained from sources believed reliable, but has not been verified for accuracy or completeness. You should conduct a careful, independent investigation of the property and verify all information. Any reliance on this information is solely at your own risk. CBRE and the CBRE logo are service marks of CBRE, Inc. All other marks displayed on this document are the property of their respective owners, and the use of such logos does not imply any affiliation with or endorsement of CBRE. Photos herein are the property of their respective owners. Use of these images without the express written consent of the owner is prohibited.